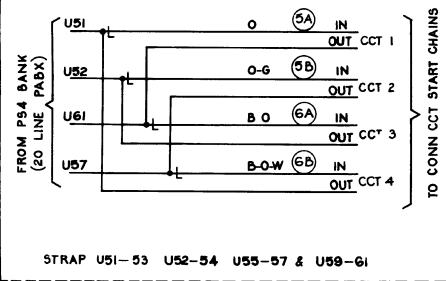


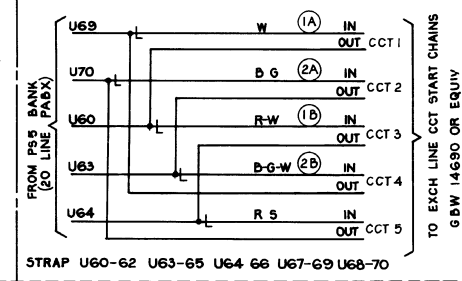
0
5 Centimetres
10
15
20
25
30

FIG 1B CONN CCT START CHAIN



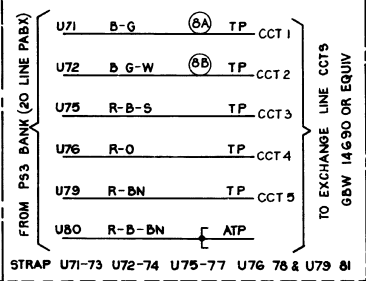
STRAP U51-53 U52-54 U55-57 & U59-61

FIG 1C EXCH LINE CCT START CHAIN

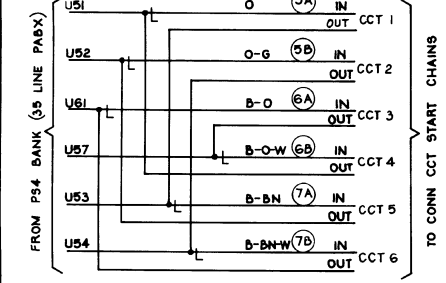


STRAP U60-62 U63-65 U64-66 U67-69 U68-70

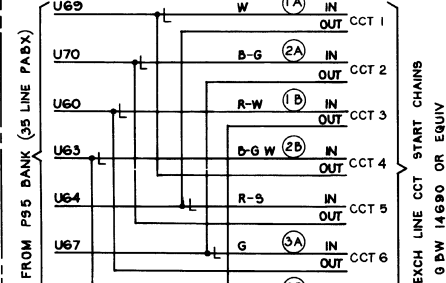
FIG 1D TEST PULSES



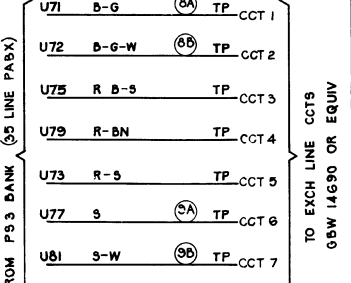
STRAP U71-73 U72-74 U75-77 U76-78 & U79-81



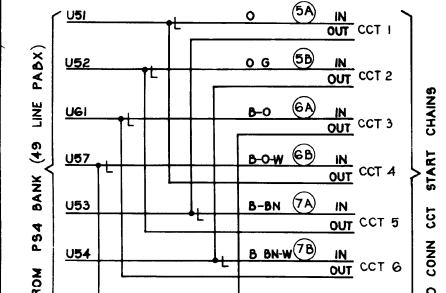
STRAP U53-55 & U57-59



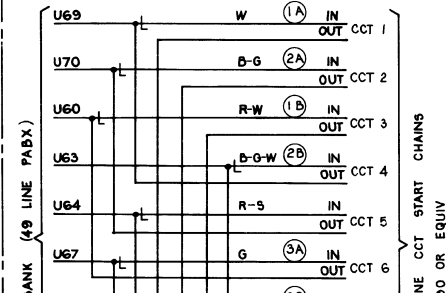
STRAP U62-64 U65-67 & U66-68



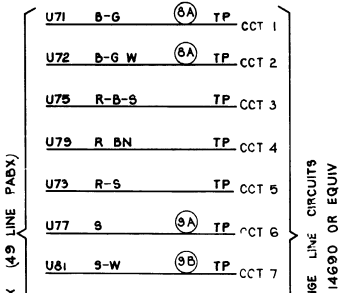
STRAP U74-76-78-80



STRAP U53-55

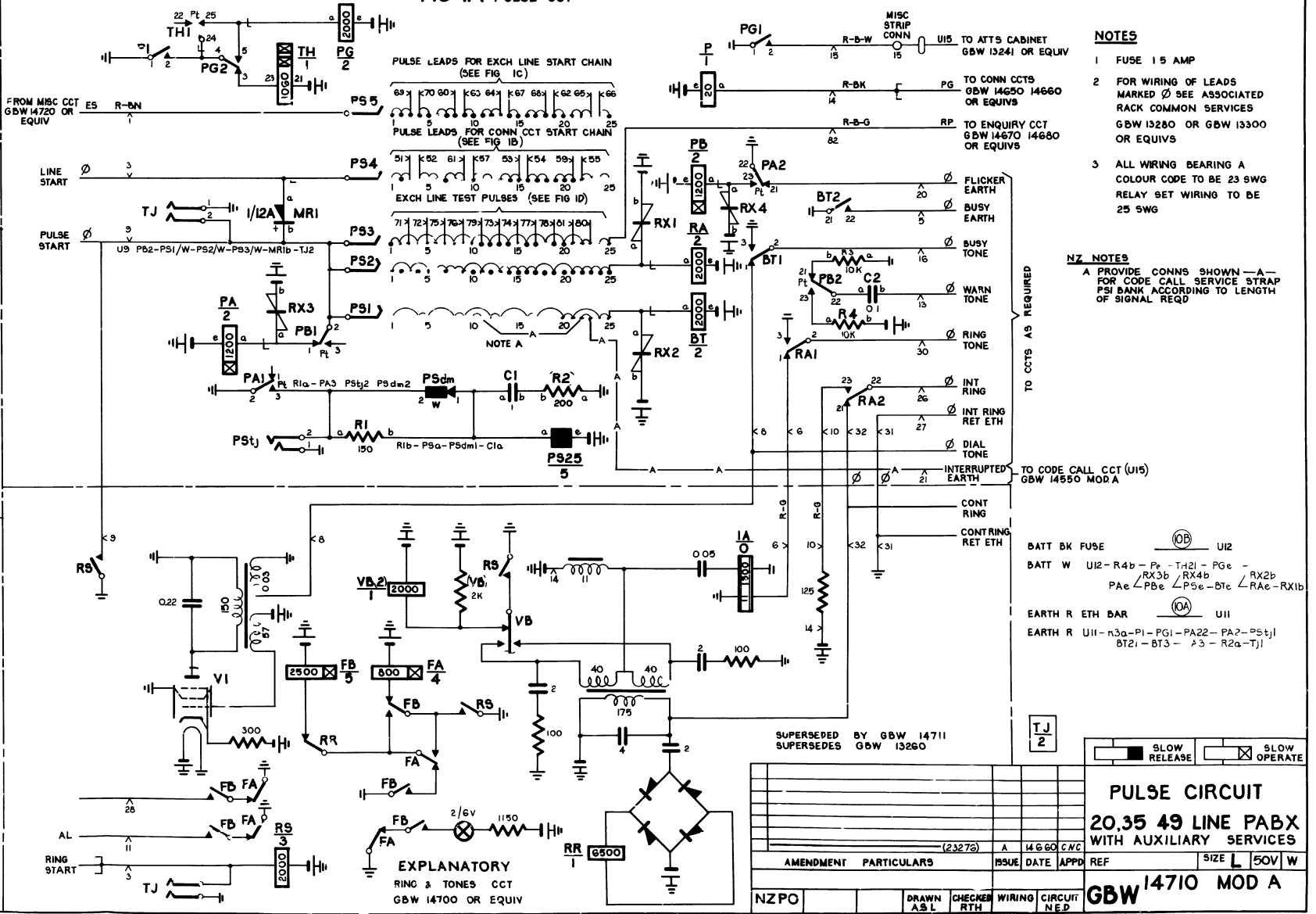


FROM P55 BANK (49 LINE PABX)



FROM P53 BANK (49 LINE PABX)

FIG 1A PULSE CCT



- NOTES**
- FUSE 1.5 AMP
 - FOR WIRING OF LEADS MARKED \emptyset SEE ASSOCIATED RACK COMMON SERVICES GBW 13280 OR GBW 13300 OR EQUIVS
 - ALL WIRING BEARING A COLOUR CODE TO BE 23 SWG RELAY SET WIRING TO BE 25 SWG

NZ NOTES
A PROVIDE CONNS SHOWN - A - FOR CODE CALL SERVICE STRAP P51 BANK ACCORDING TO LENGTH OF SIGNAL REQD

- BATT BK FUSE \emptyset U12
BATT W U12-R4b-P_e-T121-PG_e-RX2b
PA_c-RX3b-RX4b-PA_e-BT_c-RA_c-RX1b
EARTH R ETH BAR \emptyset U11
EARTH R U11-n3a-P1-PG1-PA22-PA2-P5t1
BT21-BT3-23-R2a-TJ1

SUPERSEDED BY GBW 14711
SUPERSEDES GBW 13260

PULSE CIRCUIT
20.35 49 LINE PABX
WITH AUXILIARY SERVICES

AMENDMENT	PARTICULARS	ISSUE DATE	APPROV	REF	SIZE
					L 50V/W

GBW 14710 MOD A

NZ PO	DRAWN A.S.L.	CHECKER RTH	WIRING	CIRCUIT N.E.P.
-------	--------------	-------------	--------	----------------

EXPLANATORY
RING & TONES CCT
GBW 14700 OR EQUIV

SLOW RELEASE
 SLOW OPERATE