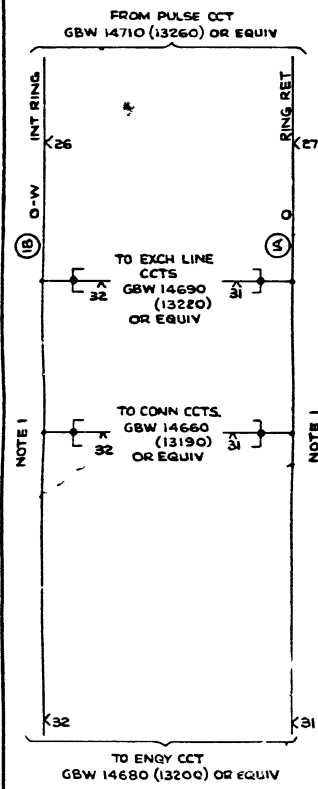
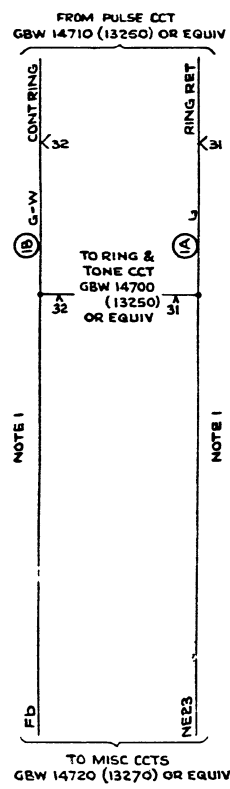


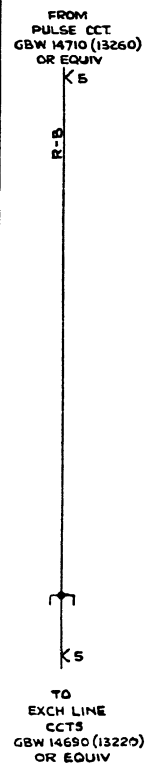
**FIG 11**  
INTERRUPTED  
RINGING  
DISTRIBUTION  
1 PER PABX.



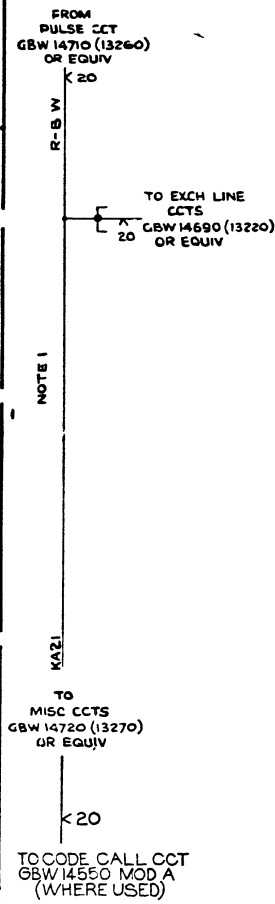
**FIG 12**  
CONTINUOUS  
RINGING  
DISTRIBUTION  
1 PER PABX.  
NOTE 5



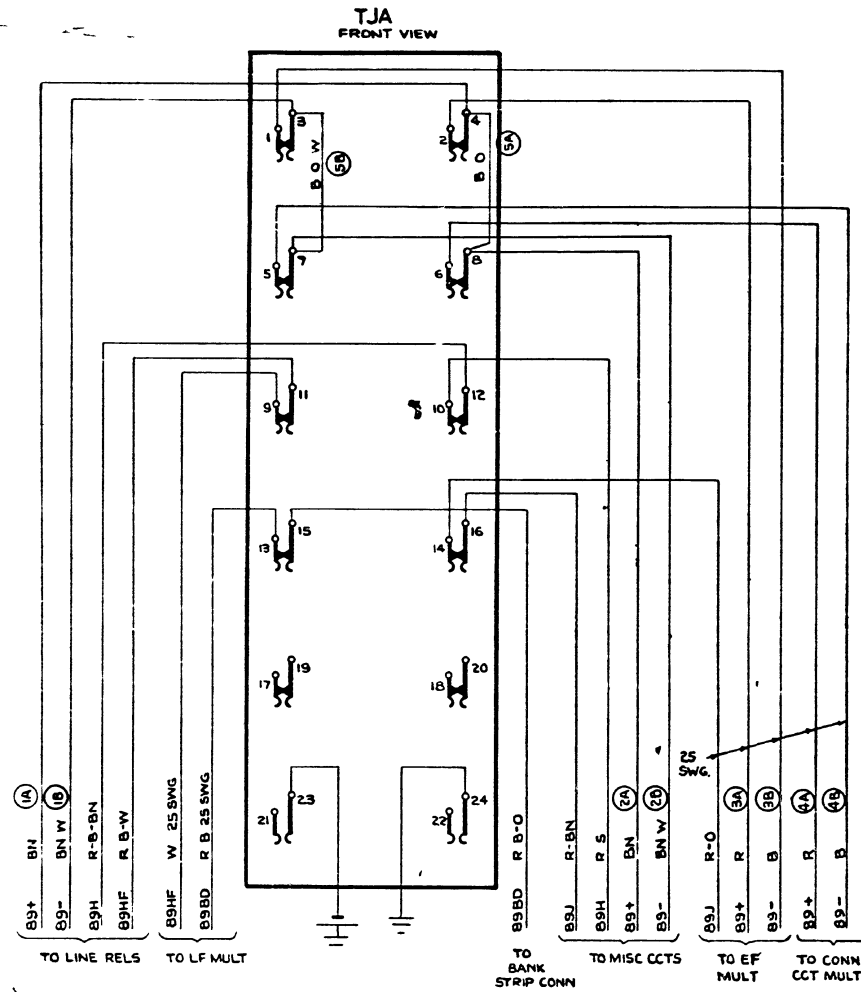
**FIG 13**  
BUSY ETH  
DISTRIBUTION  
1 PER PABX



**FIG 14**  
FLICKER ETH  
DISTRIBUTION  
1 PER PABX



**FIG 15**  
ROUTINE TEST JACK  
1 PER PABX



FOR SEQUENCE OF MULTIPLES & WIRING OF OUTLETS  
SEE LINE CCT GBW 13210 OR EQUIV

FOR BATT & ETH RUNS SEE FIG 3

<input type="checkbox"/> SLOW RELE-SE		<input checked="" type="checkbox"/> SLOW OPERATE	
RACK COMMON SERVICES 35 & 49 LINE PAB X WITH AUXILIARY SERVICES			
REFERENCE TO NOTE 5 ADDED (30497)	B	29 672	GFE
PREPARED FROM ICB 113300 ISS 4 OF 11 (2277)	A	13 6 60	LWH
AMENDMENT PARTICULARS	ISSUE	DATE	APPD
SIZE M		SGV	W
GBW 13300 MOD A SHT			2
NZPO	DRAWN	CHECKED	WIRING CIRCUIT

0 5 Centimetres 10 15 20 25 30 35 40 45 50 55 60