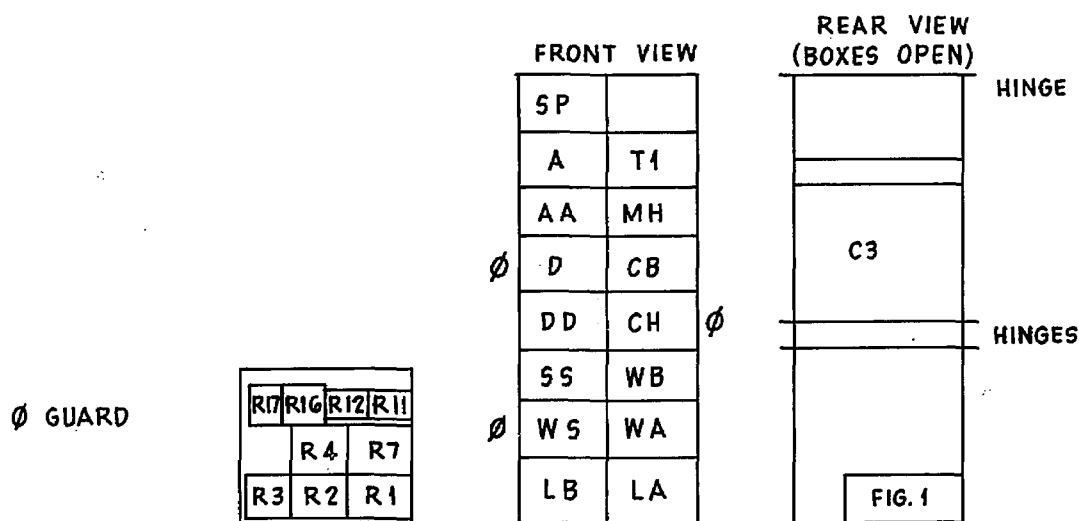


RELAY CODES & COMPONENTS LIST **GBW 16530 MOD A**
DEPENDENT EXCHANGE OUTGOING LINE CIRCUIT FOR U/D JUNCTIONS
TO PARENT EXCHANGE NZ 55 AC N° 3T

RELAY	B.C.C CODE	DIAG. FIG	NOTES	COMP I DESIGNATION	B. P. O CODE	NOTES
A	H5D 702	1A	B	R1-R9	9	
AA	H5D 701	1A	B	R10	40	
AK	5953	1B		R11-R12	12	
B	13931	1B		R13	6	
BB	50183	1B		R14-R15	15	NON-INDUCTIVE
BR	50211	1B		R16-R17	15A	NON-INDUCTIVE
CB	6383	1A		C1-C2	8017 B	
CD	50212	1B		C3	102 C	
CF	50201	1B		C4AC4B	7723	
CH	5957	1A	B	C5	4 MK2	
D	50213	1A		R19-R21	15	NON-INDUCTIVE
DB	4031	1B		T1	415 A	A.E.I. CODE
DC	5959	1A		T2	444 A	A.E.I. CODE
DD	5960	1A		RV1	26E	
DX	5961P	1B	B	RX1-RX8	2	MTD. IN WIRING
LA	7083	1A		MRI-MR3	DA 000	JOSEPH LUCAS CODE MTD. IN WIRING
				MR4	IN 4003 OR EQUIV.	MOUNTED ON RL RELAY
				TAR 1	TRANSISTOR REC'VR	A.E.I. UNIT CODE
					GBW 16560	P.W.U. 45C (MULLARD CODES)
				SCA-SCC	MINIATURE MTG STRIP	CARR FASTENER CODE
				(PLATES) CINCH	TYPE 1/4 dOd	A.E.I. DRG. DS 4125 GRP 2
				T.C.F.T.I	CLEAR FORWARD	A.E.I. UNIT CODE
					TIMER GBW 16710	UNIT ELECTRONIC 20A

NOTES: A SPECIAL FACTORS OF SAFETY B SPECIAL ADJUSTMENTS C CCT. POINTS OR MODIFICATIONS

LAYOUT
PART 1



LABEL HOLDER N° 14
2 PLUGS 32 PT P.O. 3205
NO JACK TEST E.T.C.

ISSUE A 26.9.74 (122744)	APD JHE	ORIGINATED BY	A. E. I.
		DATE	19. 3. 65
		SIGNED FOR COMMITTEE	A. H. G.
NZPO (58329) 25-11-66 N.C.			

