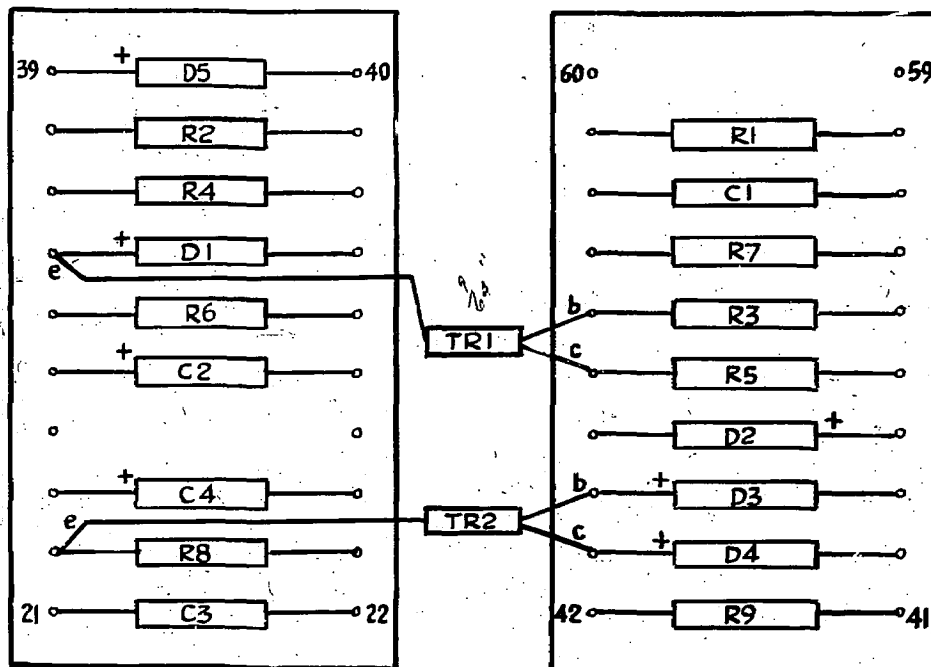


TRANSISTORISED TONE FAIL DETECTOR CIRCUIT

RELAY	BCC CODE	DIAG. FIG.	NOTES	COMPT. DESIGN	B.P.O. CODE	NOTES
				R1-R9		ELECTROSIL TR5 ±5% ½ W [ E.T. code N24660 D ]
				C1 C3		FILMCAP METALLISED POLYCARBONATE ±10% 160 V @ 85°C [ E.T. code N24963 8L ]
				C2		SOLID TANTALUM ±10% 10V [ E.T. code N200823AJ4 ]
				C4		ALUMINIUM ELECTROLYTIC +100% -10% 100 V [ E.T. code N202511AA4 ]
				TR1 TR2		CV 9507 ( BFX 30 ) MULLARD
				D1 D2		CV 8790 ( 0A202 ) " "
				D3		CV 9084 ( B7Y 88C20 ) MULLARD or ( ZF20 ) S.T.C.
				D4		CV 8308 ( DA000 ) LUCAS
				D5		CV 8308 ( DA000 ) LUCAS
				UNIT COMPLETE		E.T. Code N103422

NO RELAYS

NOTES - A SPECIAL FACTORS OF SAFETY. B SPECIAL ADJUSTMENTS. C CCT POINTS OR MODIFICATIONS LAYOUT



(30318) 13772 D.L.M.

ISSUE  
1. 13-4-72  
D5 ADDED  
(30532)  
2. 11-9-72

ORIGINATED BY	ET
DATE	13-4-72
SIGNED FOR COMMITTEE	

Continued

N.Z.P.O.  
DD 13A