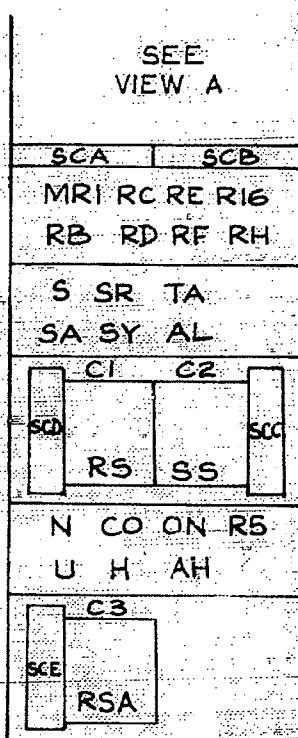


ROUTINER/ACCESS CONTROL CIRCUIT FOR FINAL SELECTOR ROUTINER
UNISELECTOR ACCESS SELECTORS MOUNTED ON APPARATUS RACKS
CAPACITY 48 RACKS 2000 TYPE

RELAY	BCC CODE	DIAG. FIG	NOTES	COMPT. DESIGNATION	BPO CODE	NOTES
AH	11202			R1	P.O. N° 6	
AL	20831			R2		
				R3		
CO	20832P			R5	P.O. N° 9	
H	2611			R16		
N	20861			R6		
ON	2434			R7		
				R8		
RB	21557			R9		
				R10		
RC	22134P			R11	P.O. N° 35B	
RD	20993P			R12		
				R13		
RE	1433			R14		
				R15		
RF	5004			R17		
				R18		
RH	2124			R19		
				MRI	P.O. 1/6AZ	
S	20857P			RS	NO P.O. CODE	G.E.C. U10X11D
SA	20995P			RSA		
SR	20995P			SS	NO P.O. CODE	G.E.C. U601
				KS	PO. 296	
SY	6035C			KCRA	PO. 73	

NOTES: A SPECIAL FACTORS OF SAFETY B SPECIAL ADJUSTMENTS C CCT POINTS OF MODIFICATIONS.

LAYOUT



N.Z. P.O.

(46678) 6.4.67

716

APP

ISSUE 1

ORIGINATED BY G.E.C.

DATE 5-9-66

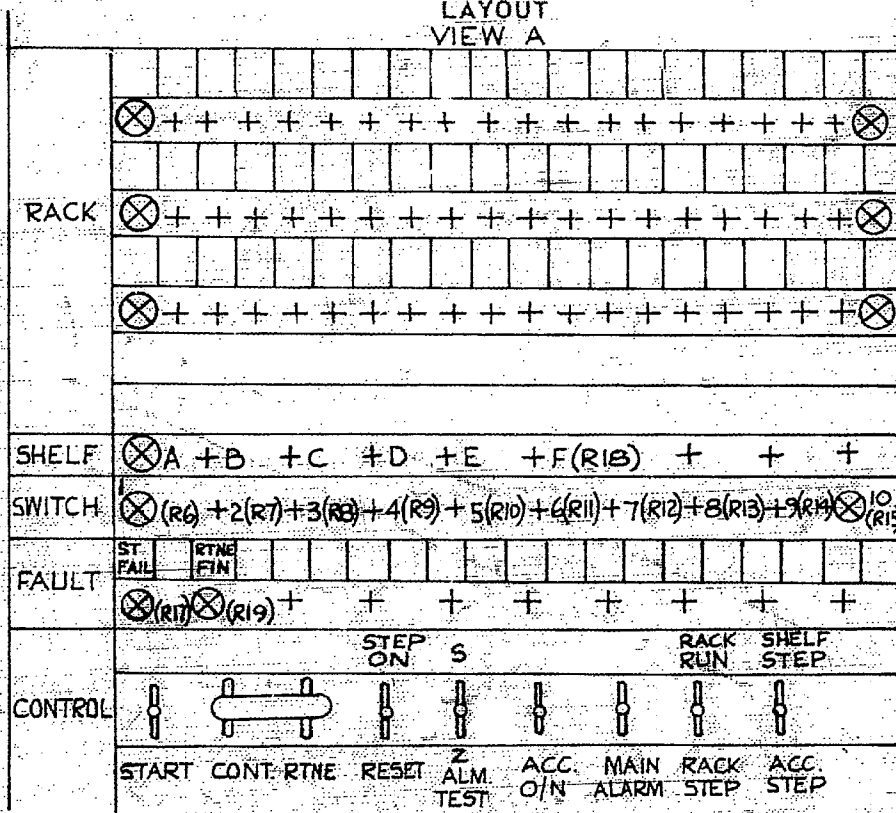
SIGNED FOR COMMITTEE *M. Valone*

ROUTINER ACCESS CONTROL CIRCUIT FOR FINAL SELECTOR ROUTINER UNISELECTOR ACCESS SELECTORS MOUNTED ON APPARATUS RACKS CAPACITY 48 RACKS 2000 TYPE

RELAY	BCC CODE	DIAG. FIG	NOTES	COMPT. DESIGNATION	BPO CODE	NOTES
TA	1262			KCRB	PO. 73	
				K50 + KR	PO. 287	
U	20344			KAS + KAZ	PO. 216	
				KAF	PO. 291	
				KMA	PO. 68	
				KRR + KRS	NO PO. CODE	G.E.C. 42403
				KSS + KSA	PO. 216	
				C1	} PO. 101	
				C2		
				C3		

NOTES A SPECIAL FACTORS OF SAFETY B SPECIAL ADJUSTMENTS C CCT POINTS OF MODIFICATIONS.

LAYOUT VIEW A



ENGRAVED TO SUIT INDIVIDUAL JOB AS REQUIRED.

APP	ORIGINATED BY	G.E.C.
ISSUE 1	DATE	5-9-66
	SIGNED FOR COMMITTEE	<i>M. Malone</i>

(46678) 6. 4. 67.