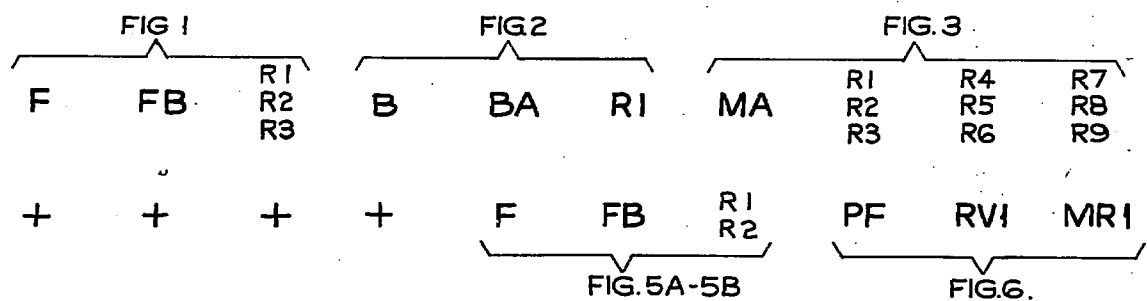


RELAY CODES & COMPONENTS LIST, **GBW 15340**
FUSE ALARM ARRANGEMENTS
RINGER EQUIPMENT RACK.

RELAY	B.C.C. CODE	DIAG. FIG.	NOTES	COMPT. DESIGNATION	B.P.O. CODE	DIAG. FIG.	NOTES
F	10691	1		R1	Nº 9	1A	
FB	4074	1		R2	Nº12	1A	
B	2133	2		R3	Nº12	1B	
BA	4119	2		R1	Nº12	2	
MA	4074	3		R1	Nº9	3	
F	10691	5A		R2	Nº9	3	
FB	4074	5A		R3	Nº9	3	
PF	7858	6	B	R4	Nº9	3	
				R5	Nº9	3	
				R6	Nº9	3	
				R7	Nº9	3	
				R8	Nº9	3	
				R9	Nº12	3	
				R1	Nº9	5A	
				R2	Nº12	5B	
				RV1			POTENTIOMETER SKIW FIG.6
				MR1	1/2 AZ	6	
				(MR2)	NOTE.1. *		ZENNER DIODE CODE-MOLY.G. REGULATOR.Y223-TEXAS INST.-BEDFORD. FIG.6.
				KAT&KR	Nº216	6	
				KRR	Nº72	2	

NOTES:-A SPECIAL FACTORS OF SAFETY. B SPECIAL ADJUSTMENTS. C CIRCUIT POINTS OR MODIFICATIONS

LAYOUT NOTE 2



NOTES:

- FOR EARLY EQUIPMENTS (MRB) WAS Y223. THIS CODE IS NO LONGER AVAILABLE. FOR NEW WORK IS4033A (TEXAS INST. CODE) OR Z3B330AF (S.T.C. CODE) TO BE USED.
- FOR ALTERNATIVE LAYOUTS SEE RELEVANT EQUIPMENT DRAWINGS.

NZPO. (72452) 13.3.64 B.G.

ISSUE 1 RA & RIB DEL. FROM FIG. 6 LAYOUT. (83005)	ISS. 2. 23.5.64 BG NOTE 1. ADDED (58152)	ISS. 3. 10.8.66 NC NOTE 2. ADDED (46787)	ISS. 4. 23.1.67 NC RETRACED. NOTE B ADDED TO RELAY PF (122083)	ISS. 4A. 24.10.73 JHE	ORIGINATED BY	AT. & E. Co.
					DATE	20.1.64
					SIGNED FOR COMMITTEE	H. B.