

RELAY DESIGN FOR CIRCUIT GBW 14550 MODA FIG 1-SHT 1 OF 2

TITLE **VISUAL CODE CALL CIRCUIT**
(25 VISUAL AND/OR AUDIBLE CODES)
120,135,149,300 TYPE PABX'S

COMMITTEE'S WIRING DIAGRAM NO. _____

RELAY NAME	COMM CODE	NZ PO CODE	DEPARTURES FROM DIAGRAM		SPRING NUMBERING CONTACT UNIT NUMBER								REFERENCES TO NOTES BELOW			
			RESISTANCE	CONTACTS	1	2	3	4	5	6	7	8				
A		57012FB			5 4 3	21 22	2									
B		50233AA			25 23	24 21	2	22	7	5 4	9	27 28	29			
BR	10442				2 1	4 1	22									SPRINGS 3 & 4 NOT WIRED ON 120,135,149. SPRINGS 21, 22 NOT WIRED ON 300 TYPE
BT		54121ABY			7 5	6 2	23 24	26	3	4	21 22					
CR	74357P				21 22	23 24	5 7	6	3	4	25 26					
CD	60694				5 4	21 22	23 24	2								
DF	60693				1 2	21 22	3 5	4 8	6 7	23 24						
DT	60693				1 2	21 22	3 5	4 5	6 7	23 24						SPRINGS 6 & 23 NOT WIRED.
H	6048				21 22	23 24	5 6	7	1	2	3 4					
SD	4750				23 24	2	3 5	4 22								

NOTES SPECIAL FACTORS OF SAFETY A
 SPECIAL ADJUSTMENTS B
 CIRCUIT POINTS OF MODIFICATIONS C

CLASS RELAY NOTES

LAYOUT FRONT VIEW

A	B
CD	BR
DT	DF
SD	BT
CR	H
CS	

DATE 2.2.56

SIGNED FOR COMMITTEE

[Signature]

NZPN
 ISSUED
 NZPO 155A (1679)
 NZPO 155B
 RELAYS A & B
 CHANGED
 (55974) 225.62

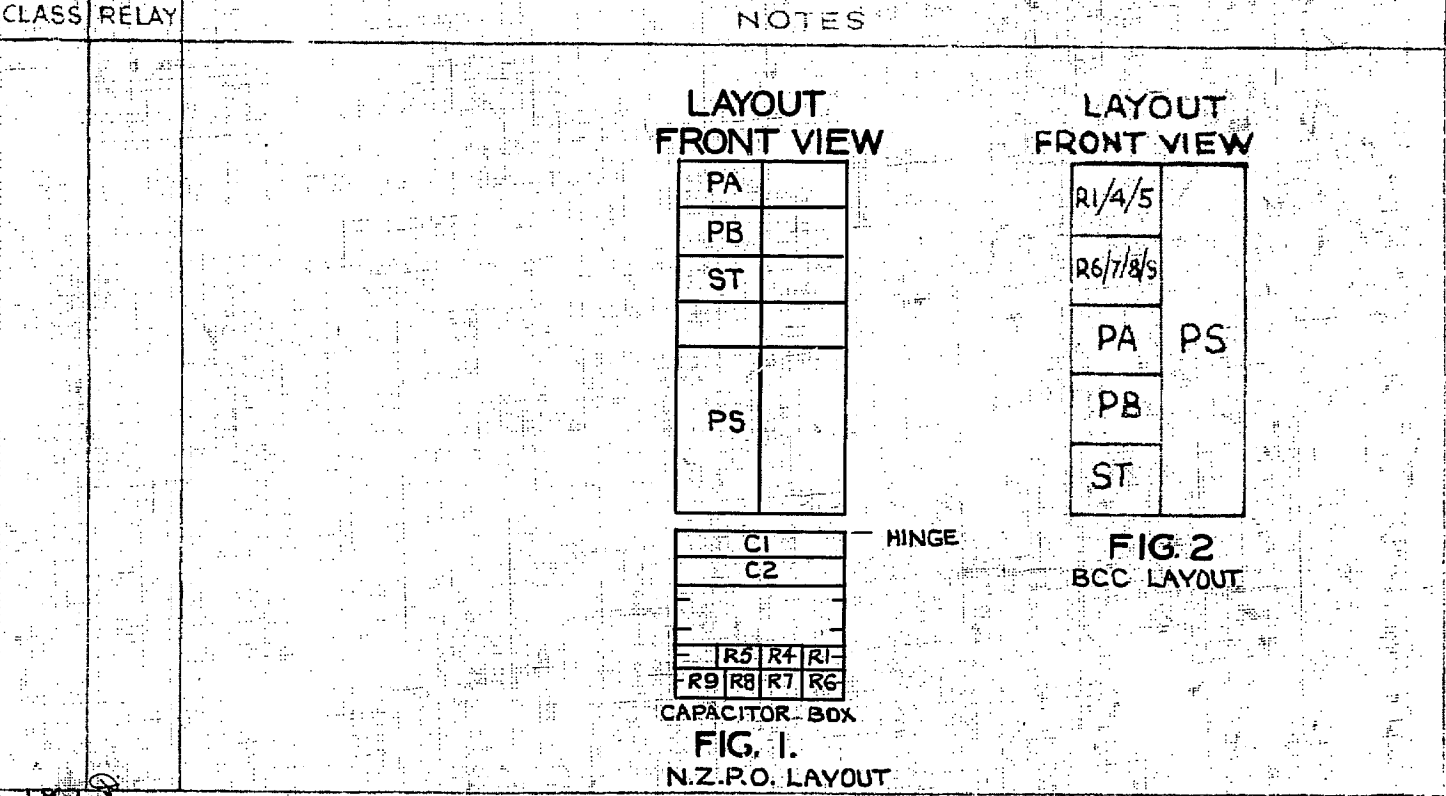
Centimetres
 5
 10
 15
 20
 25
 30

RELAY DESIGN FOR CIRCUIT **GBW 14550 MODA FIG 2-SHT 2 OF 2**
TITLE AUXILIARY AUDIBLE CODE CALL CIRCUIT
120,135,149,300 TYPE P.A.B.X.'S

COMMITTEES WIRING DIAGRAM NO.

RELAY NAME	COMM CODE	DEPARTURES FROM DIAGRAM		SPRING NUMBER NG CONTACT UNIT NUMBER								REFERENCES TO NOTES BELOW		
		RESISTANCE	CONTACTS	1	2	3	4	5	6	7	8			
PA	2583 A				1 2 3 PEC									
PB	2583 A				1 2 3 PEC									
ST	6008A					1 2 PCM								

NOTES SPECIAL FACTORS OF SAFETY A
 SPECIAL ADJUSTMENTS B
 CIRCUIT POINTS OF MODIFICATIONS C



Centimetres 0 5 10 15 20 25 30