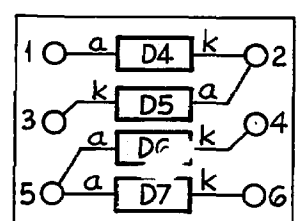


RELAY CODES & COMPONENTS LIST **GBW 14170 MOD.F**
INTER-SWITCHBOARD LINE CCT. (B/W AUTO-AUTO TO SATELLITE PABX
50/1200 LINE

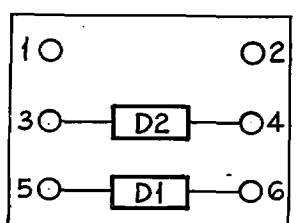
| RELAY | BCC CODE | DIA FIG | NOTES | COMPT DESIG-NATION | BPO CODE | NOTES |
|----------|----------|---------|----------|--------------------|-----------------|---------------------|
| R AA - | H5521 | | B | TR1 | BM 4177/2 | S.T.C. CODE |
| R AB - | H5517 | | B | C1 | MC 102 | |
| G B () | 1751 | | | C2 | MC 102 | |
| G CR A | | NZPO | 54237 AA | C3 | MC 102 | |
| W DD B | 4070 | | | C4 | MC 101 | |
| G DL A | 71773 | | | C5 | MC 101 | |
| W DR B | 73518 | | | C6 | MC 101 | |
| W D (15) | 2222 | | | DI-8 | DIODE | IN 4003 5/L N° K905 |
| W BR B | 1618 | | | R1 | N° 6 | MTD ON C4 |
| G OG () | 6381 | | | R2 | N° 6 | MTD ON C1 |
| W OR () | | NZPO | 54236 AB | R3 | N° 9 | |
| R S () | 60637 | | B | R4 | N° 9 | |
| W SC () | 7499 | NZPO | 50607 AB | R5 | N° 9 | |
| W SR B | 4046 | | | R6 | N° 9 | |
| W ST () | 2017 | | | R7 | N° 9 | |
| R LD - | H5518 | | B | R8 | N° 9 | |
| G Z () | 4250 | | | R9 | N° 9 | |
| W ZR B | 2782 | | | R10 | N° 9 | |
| R LS - | H5521 | | B | R11 | N° 9 | |
| | | | | R12 | N° 12 | |
| | | | | R13 | N° 12 | |
| | | | | RB1 | RES. BARR. N° 1 | |

NOTES: A SPECIAL FACTORS OF SAFETY.
 B SPECIAL ADJUSTMENTS.
 C CCT. POINTS OR MODIFICATIONS.

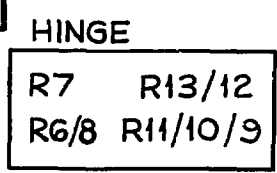
LAYOUT



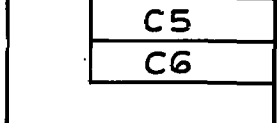
SCB (MTD REAR RELAY OR)



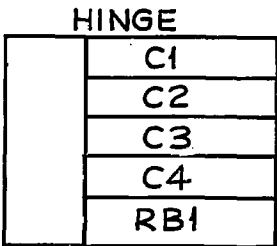
SCA (MTD REAR RELAY SC)



TOP REAR COVER HINGE



MIDDLE REAR COVER HINGE



CAPACITOR BOX

| | |
|-----|--------|
| TR1 | R3/4/5 |
| B | ST |
| D | AA |
| DR | AB |
| CR | LS |
| BR | DL |
| S | LD |
| Z | SR |
| DD | ZR |
| OR | OG |
| | SC |

FRONT VIEW

≠ RELAY GUARD

NZPO

APD
 PREPARED FROM ISS. 1 OF 20-1-60 (44610)
 ISS. A 17-8-76 (55999)

| | |
|----------------------|--|
| ORIGINATING BY | |
| DATE | |
| SIGNED FOR COMMITTEE | |