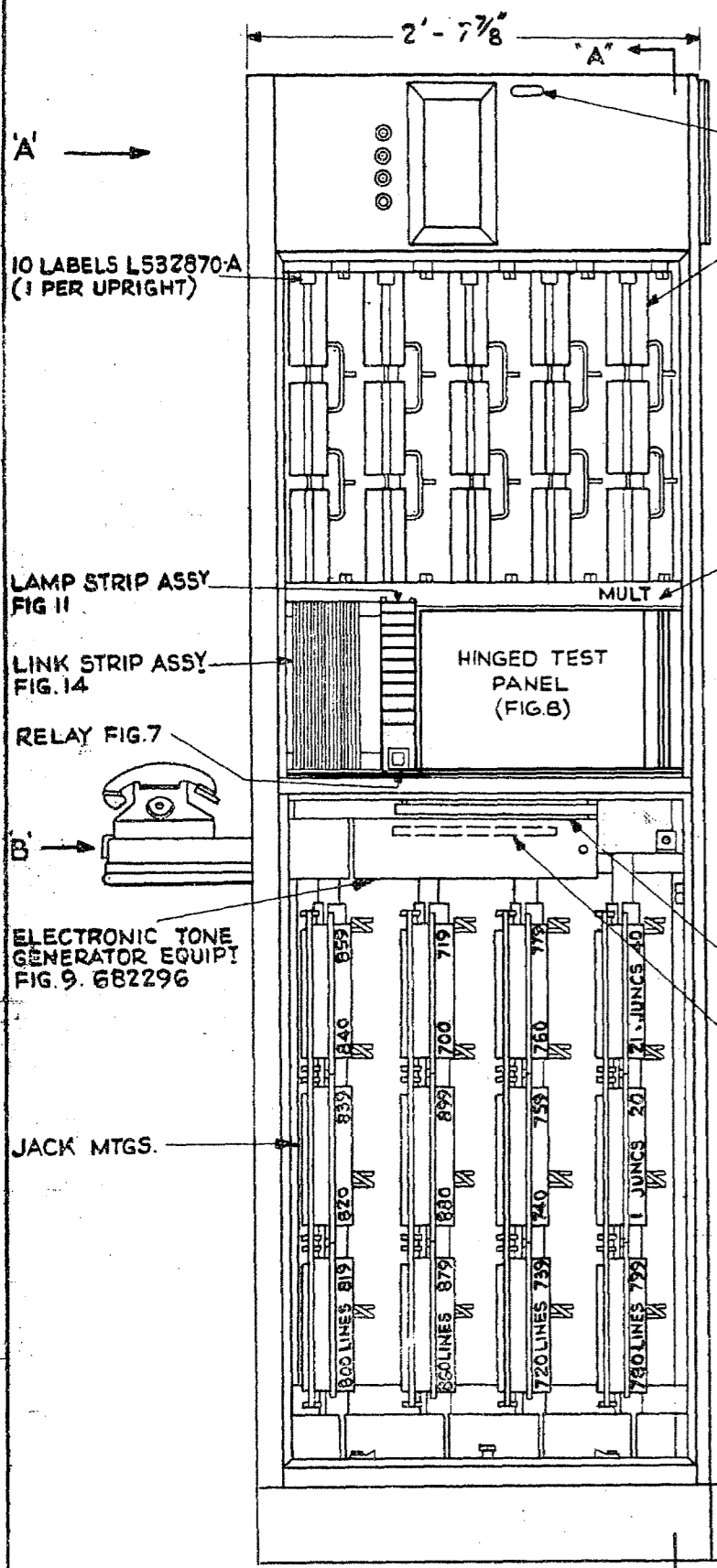


GROUP. I. FIG. 1.



RACK DESIGNATION LABEL FIG. 13.

15-TERM. STRIPS L150214 EACH FIXED WITH 2-1 BA. CH. 5/8 S. SCREWS MTD. W/ SHOULDERED SIDE OF TAGS ON RT. HD. SIDE FIG. 20.

MARKED IN 1" CHARACTERS (BLACK).

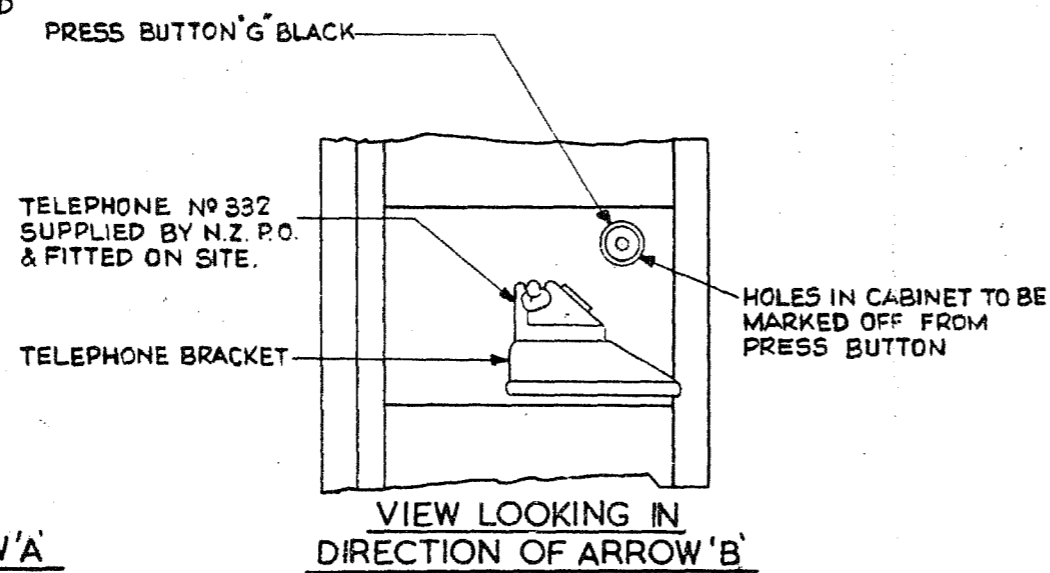
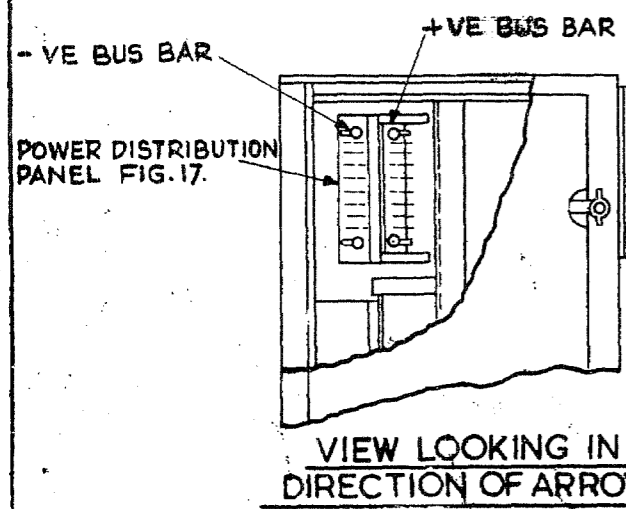
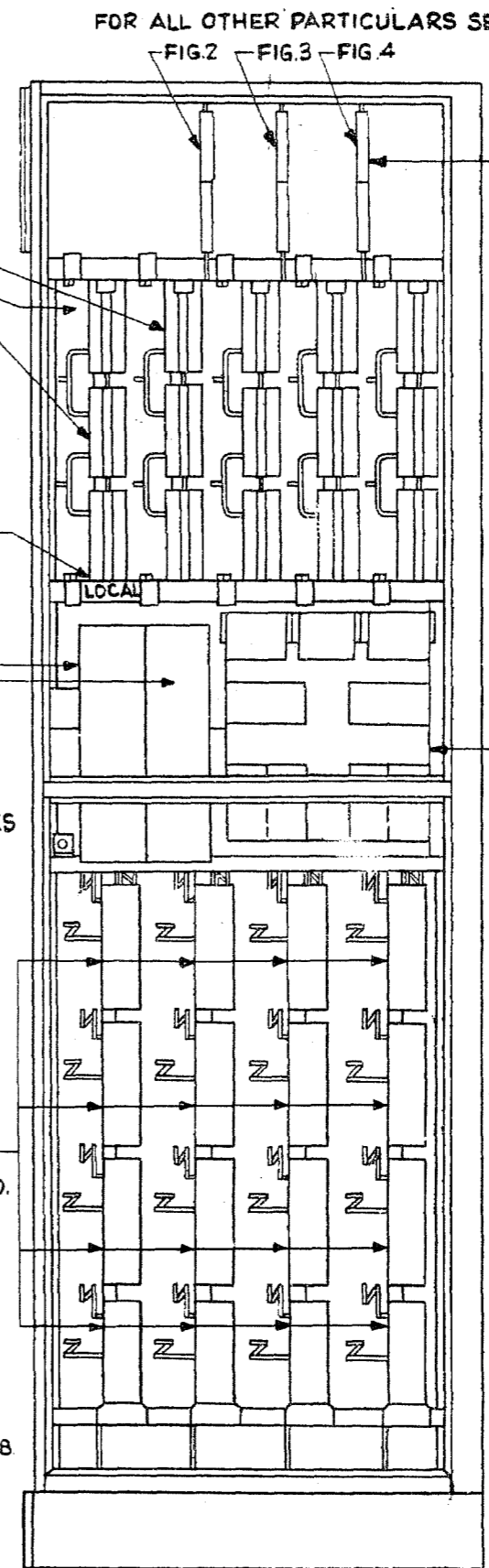
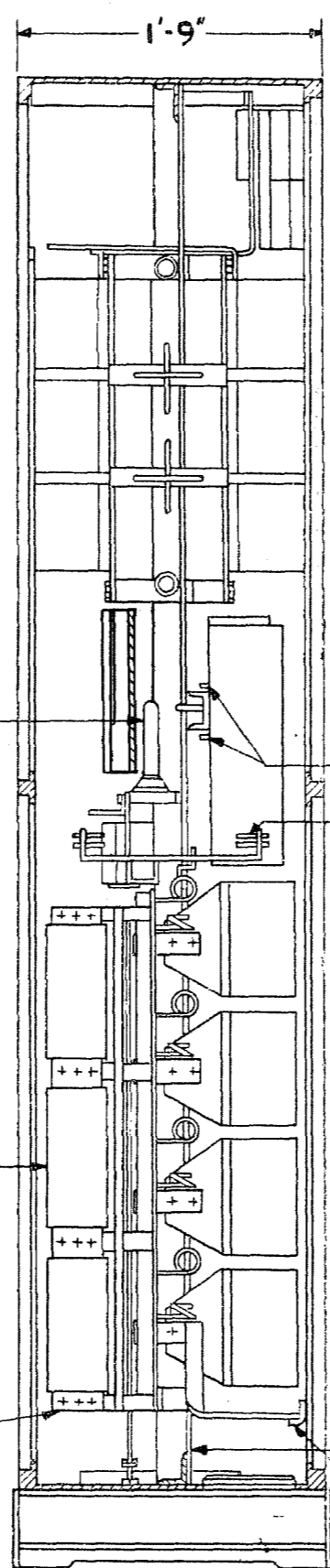
LAMP L94106-A FITTED IN SOCKET

N.U. TONE DISTRIBUTION JACK STRIP FIG. 16.

TERM. STRIPS FIG. 15.

6 PROTECTORS P.O. 408

PACKING PIECES FITTED IN END POSITIONS



NOTES:-

6- PROTECTORS FOR LINES 800-899 & JUNCS. 1-20 TO BE FITTED BY SHOPS. FOR IRON FRAMEWORK SEE DRGS. 433842 FOR CABINET ASSEMBLY SEE DRG. 433833

MATERIAL SUPPLIED BY NZ.P.O.

PROTECTORS (ADDITIONAL) P.O. NO. 408

M.D.F. FUSE MTGS. P.O. 4001 OR 4028

1- TELEPHONE & BELL SET

1- DIAL SPEED TESTER P.O. NO. 43

1- DETECTOR P.O. NO. 4

1- PRESS BUTTON

1- TELEPHONE MTG. BRACKET.

TYPICAL EQUIPMENT. COMBINED M.D.F. I.D.F. & MISC. EQUIPT. RACK 'C' MARK 3 UNIT AUTO. N.Z. 13.

DRAWN B.A.D.	ENGINEERS	APPROVED	ENG. <i>16/5/61</i>
TRACED 28/2/61	<i>JBN</i>	DRIFT.	<i>16.5.61</i>
CHECKED L.M.			
495272	SHT. 1-B	AUTOMATIC TELEPHONE & ELECTRIC CO. LTD LIVERPOOL	

ISSUE		APPROVED
1	10.5.61	<i>JBN</i>
2	C.O. 2570. PIP-PIP & G SEC. PULSE RELAYS DELETED.	<i>JBN</i>
1-8-62		<i>JBN</i>
REF.: FRAMEWORK ASSEM 435148		
FU:FG 2/807616		

1	16.5.61	
2.	C.O. 2570	
	FIGS. 3 & 4 TAGGING FOR DIP-PULSE SUPPLY DELETED.	
	1-8-62	

FIGS 2, 3 & 4
THESE DESIGNATIONS TO BE
SUITABLY POSITIONED
NEAR RELATIVE TERM. STRIPS.

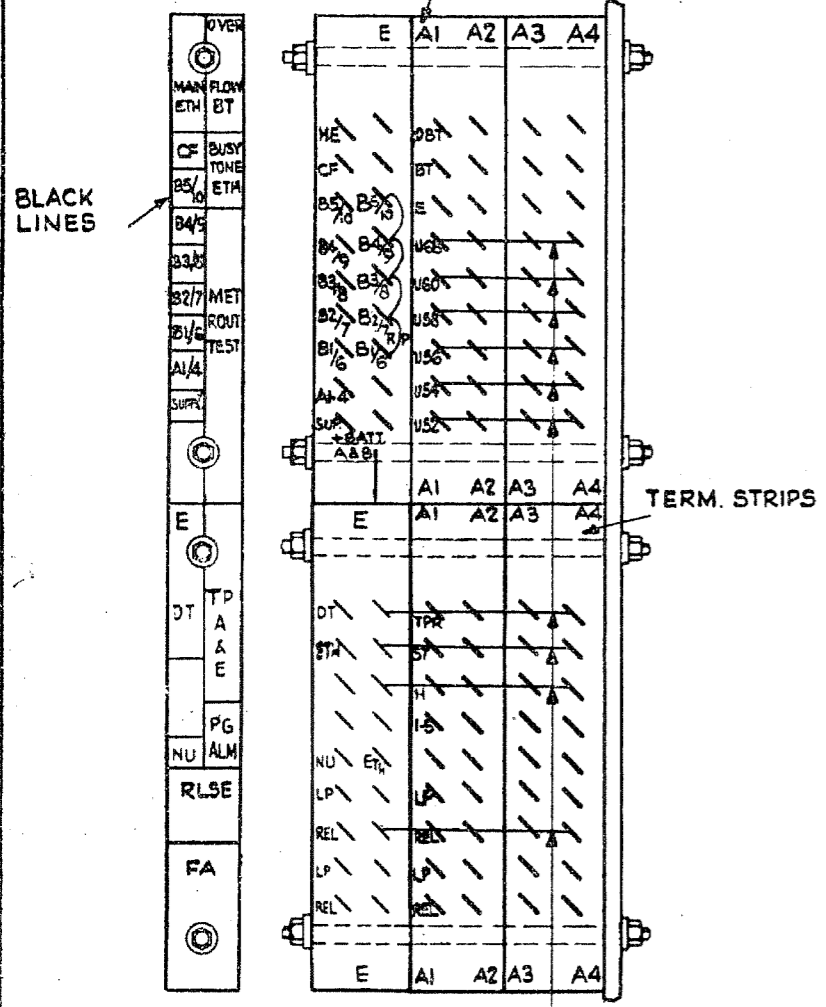


FIG. 2. 25 S.W.G. B.T.C.

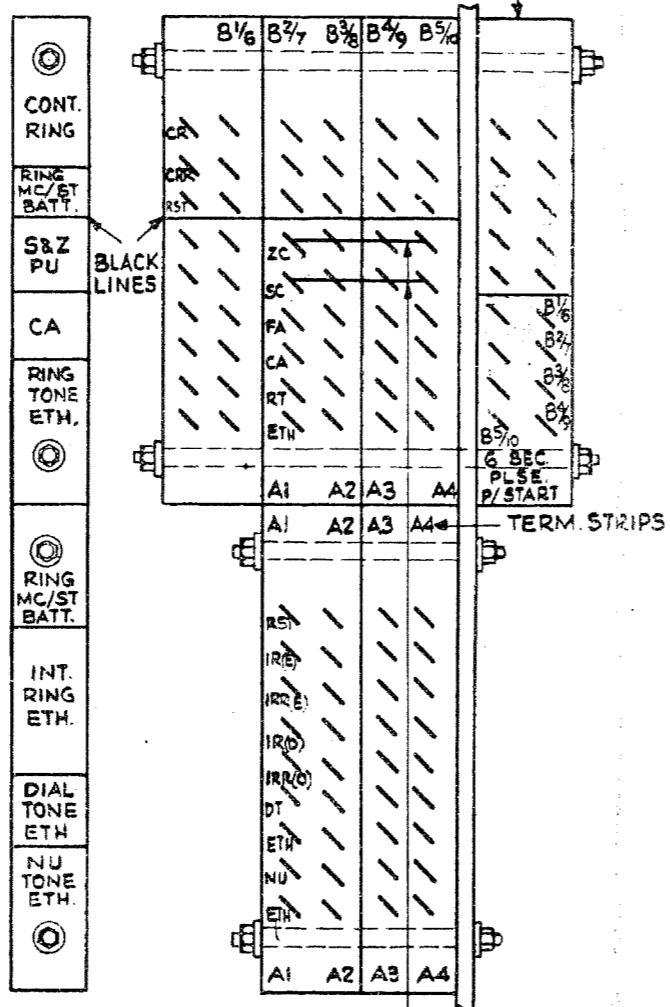


FIG. 3. 25 SWG BTC STRAPS

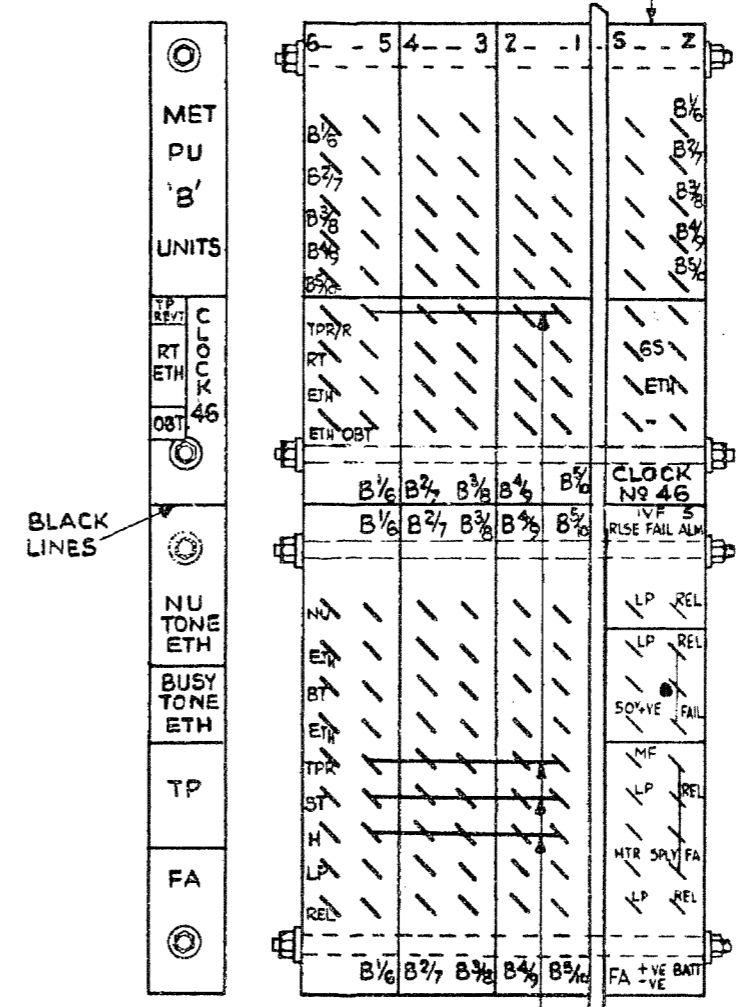
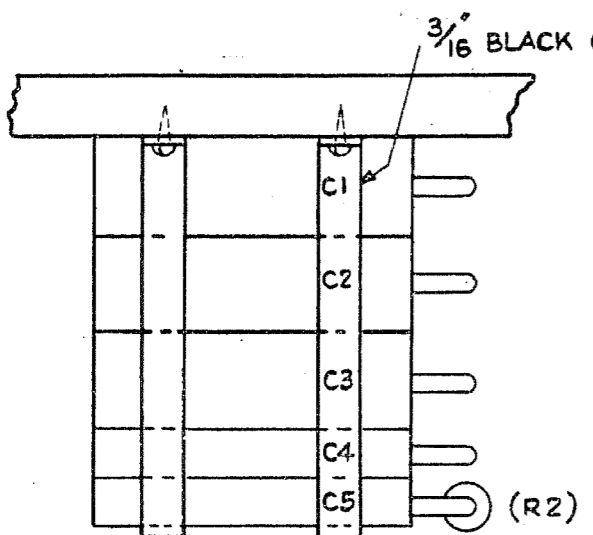


FIG. 4. 25 SWG BTC STRAPS



CODES OF CAPACITORS
C1-C2-C3 - L68337 - 2MF
C4-C5- L68068 (R2)- L28352

FIG. 5.
REAR PLAN VIEW

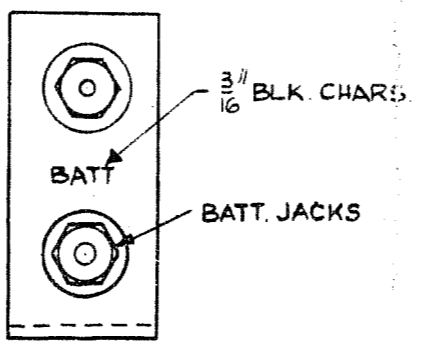


FIG. 6.

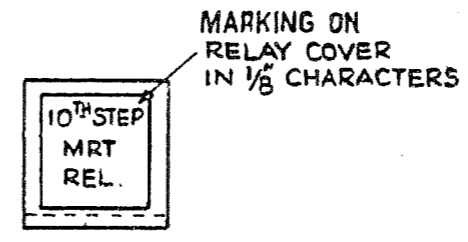


FIG. 7.

TERM. STRIPS
AT REAR
OF MTG. BAR.

REF.

FU:FO 2/807616

TYPICAL EQUIPMENT.
COMBINED
M.D.F. I.D.F. & MISC. EQUIPT.
RACK 'C' MARK 3
UNIT AUTO. N.Z.13.

DRAWN B.A.D.	ENGINEERS	APPROVED	ENG. 16/5/61
TRACED 28/2/61	J.M.	CAPT. 16.5.61	
CHECKED L.M.			
495272 SHT 2	AUTOMATIC TELEPHONE & ELECTRIC CO. LTD LIVERPOOL		

ISSUE	APP
1. 16. 5. 01	70
2. C.O.2570 IN FIG. 8. AK KEYS AK B111 WERE P.O. NO. 86	570
1 - 8 - 62	98.

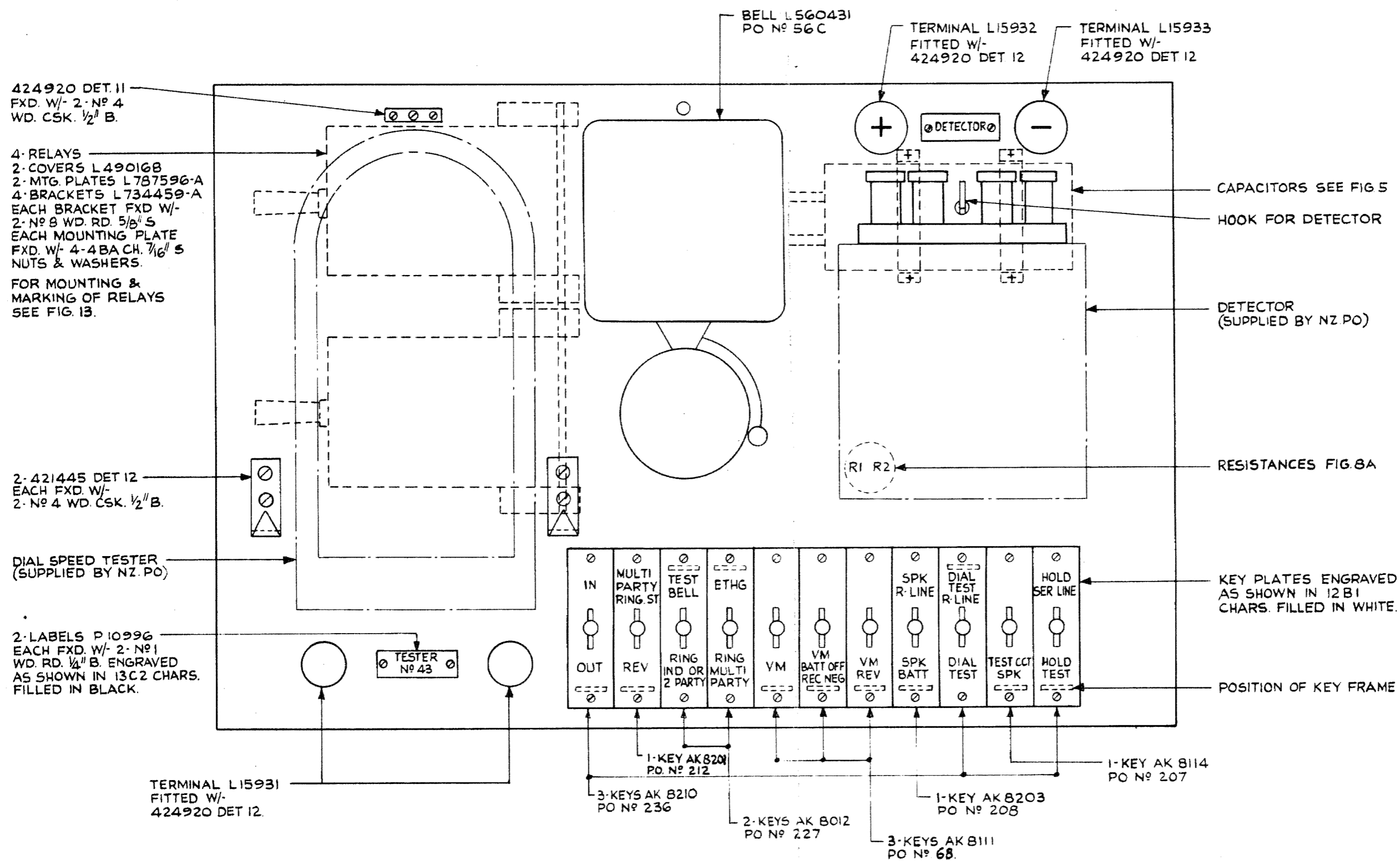


FIG. 8.
FRONT VIEW

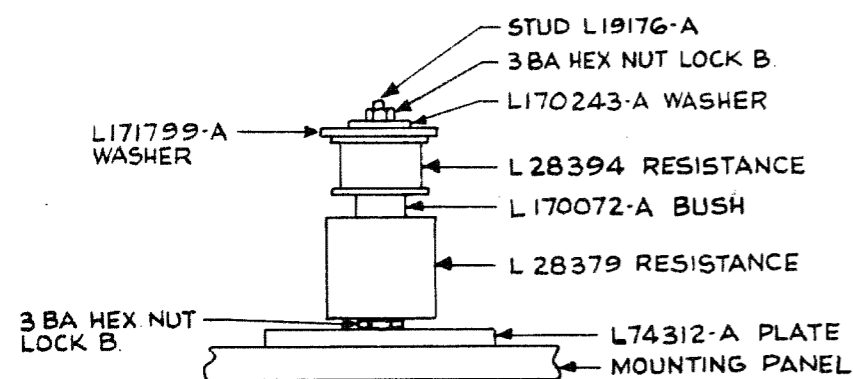


FIG 8A

REF.

FU.FD. 2/807616

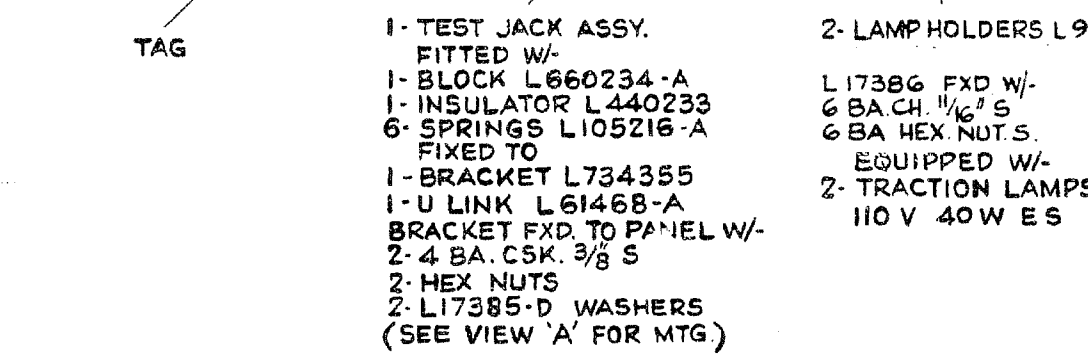
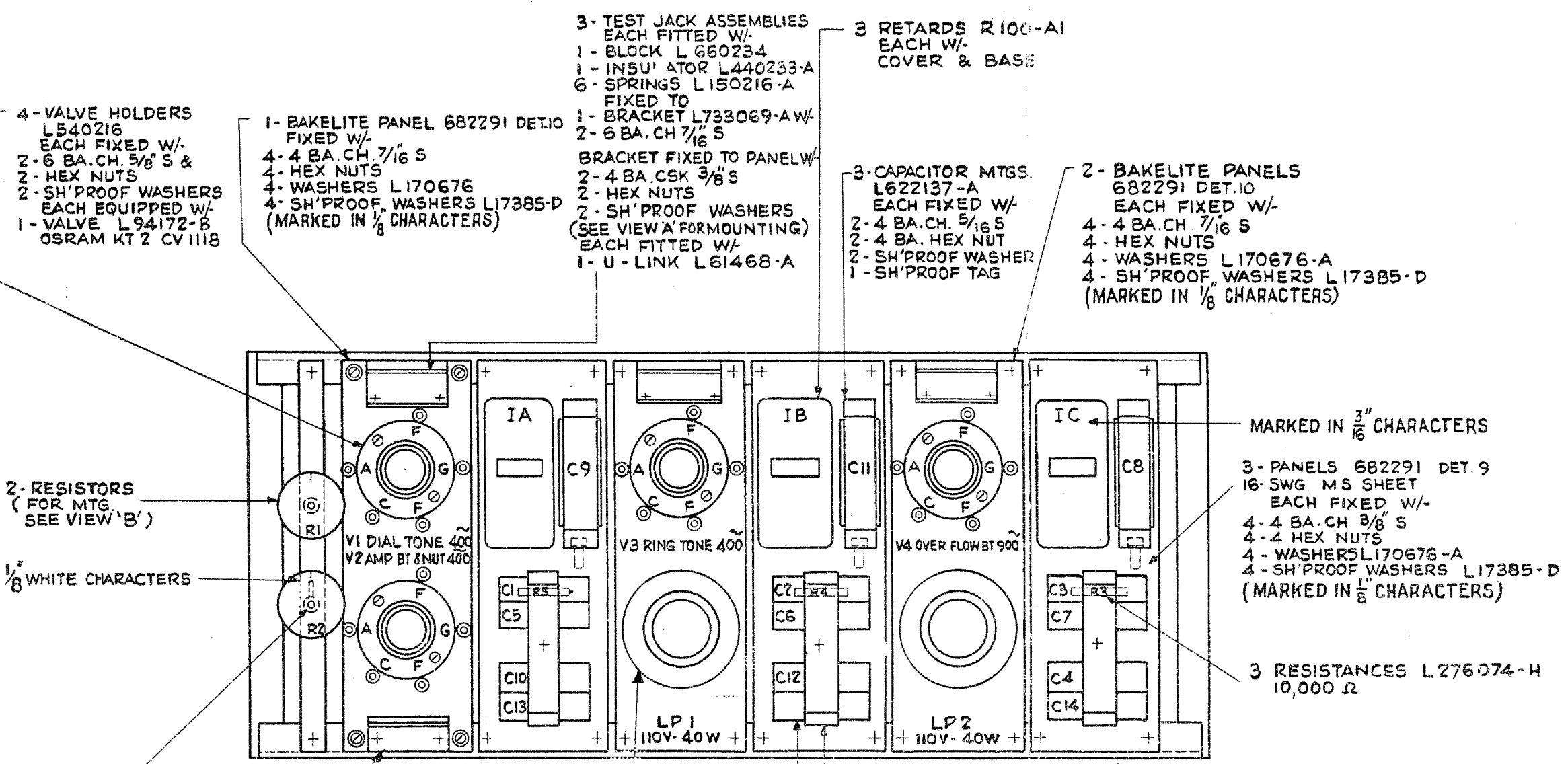
TYPICAL EQUIPMENT
COMBINED
M.D.F. I.D.F. & MISC. EQUIPT.
RACK 'C' MARK 3.
UNIT AUTO. NZ. 13.

DRAWN B.A.D.	ENGINEERS	APPROVED	DRFT ENG
TRACED 3/3/61	J.S.N.		H.M.
CHECKED L.M.			16.5.61

495272 SHT 3

AUTOMATIC TELEPHONE & ELECTRIC Co. LTD LIVERPOOL

G



CODES OF RELAYS ETC.

RELAYS		CAPACITORS		RESISTANCES		
IA	R100-A1	C1	L680737	R1	L285159	
IB		C2		L68391		
IC		C3				L68339
	C4	L68350		R3		
	C5			R4		
	C6	R5				
	C7					
	C8					

ISSUE		APP
1	10-5-61	K.M.
2	1-8-62	ES

CO 2570
VALVE L94172-B WAS
L94172. BAKELITE
PANEL 682291 DET 10
WAS DET B. TRACTION
LAMP CODE L94678
WAS SHOWN REMOTE.
VIEW B. 3 BA. HEX. LOCK
NUT B WERE HEX NUT

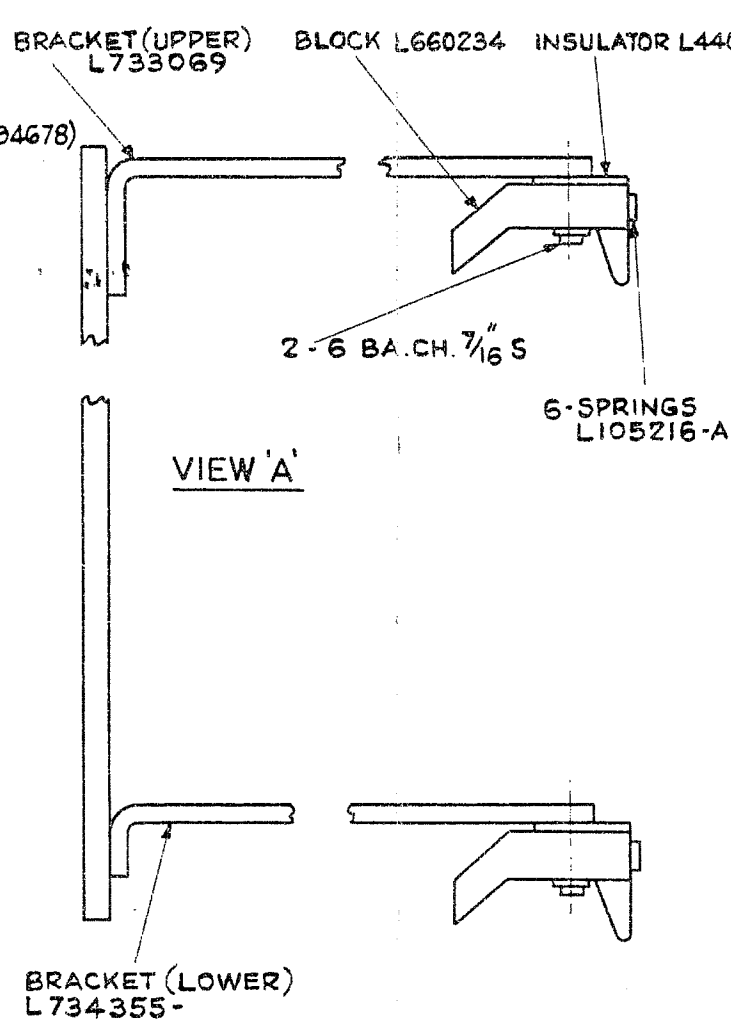


FIG. 9.

NOTE
FOR IRON FRAMEWORK SEE 682291
FOR EQUIPMENT AS FITTED ON
UNIT SEE 682296

TYPICAL EQUIPMENT.
COMBINED
M.D.F. I.D.F. & MISC. EQUIPT.
RACK 'C' MARK 3
UNIT AUTO. N.Z.13.

DRAWN B.A.D.	ENGINERS	APPROVED	ENG.
TRACED 1/3/61	J.S.X.		
CHECKED L.M.		DRAFT	16-5-61

495272 SHT 4
AUTOMATIC TELEPHONE & ELECTRIC Co. LTD LIVERPOOL

REF: -
FU:FO 2/807616

RED CHARS. (SEE NOTE 2)

WHITE CHARS. (SEE NOTE 2)

B	B	B	B	B	B	B
A1-A4	B1/6	B2/7	B3/8	B4/9	B5/10	FA

N	R	B	Y	B	R	N	R	R	N	R	R	R	R
	METER PULSES	RING RETURN ODD	TP UNISEL	R RET EVEN & CONT	6 SECS PU		R&MGRP 10 th STEP RELAY	TP GROUP	BATT JACKS	TEST CCT & LAMPS	RINGER	VALVE CCTS & TONES	FA

VIEW 'A'

VIEW 'B'

VIEW 'C'

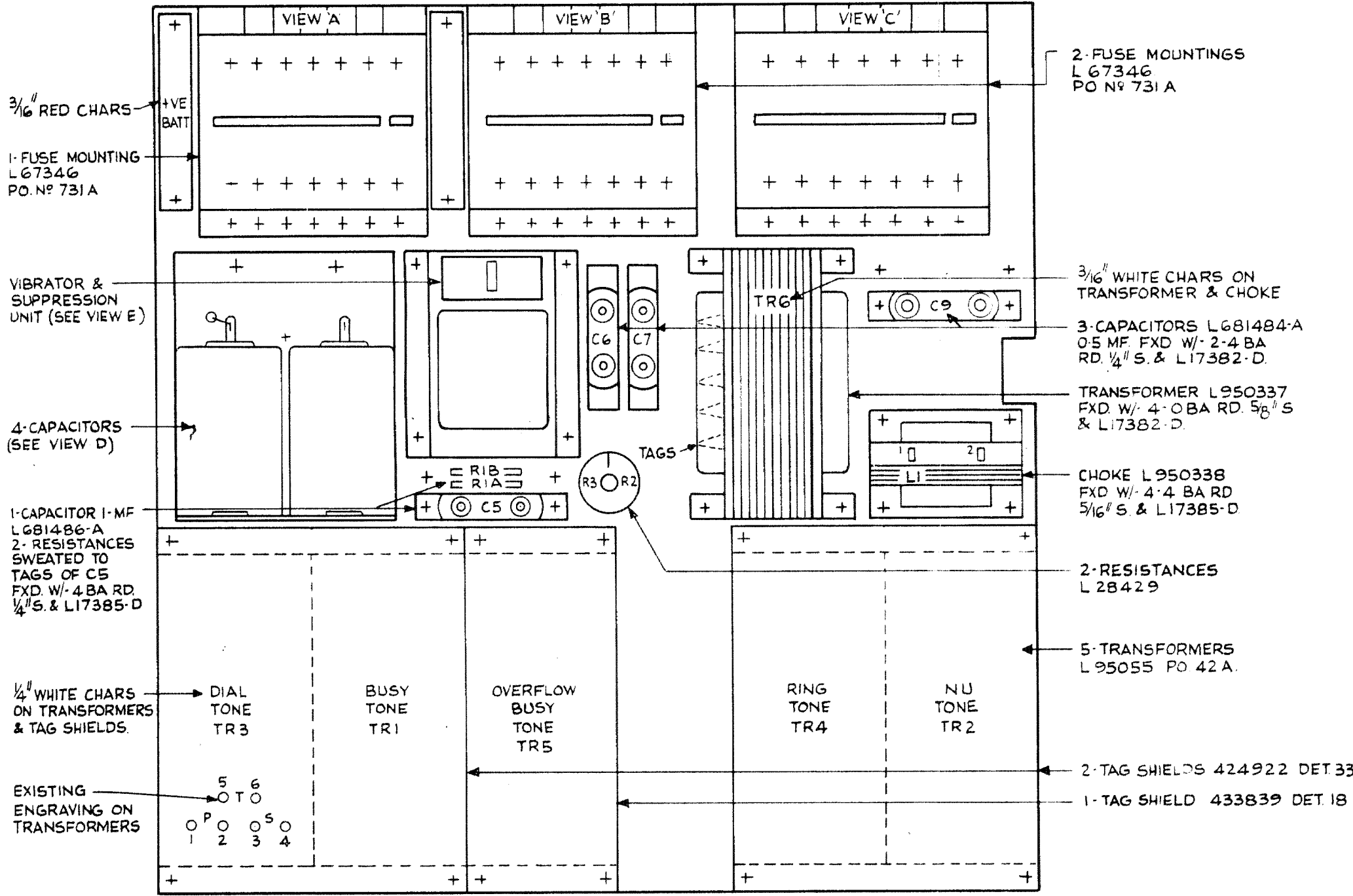


FIG. 10.

A4	CA	NU	CF	
A1	A2	A3	CA	CA
C	B5/10	PG		
A4	B4/9	A4		
A3	B3/8	A3		
A2	B2/7	A2		
A1	B1/6	A1	FA	Rlse
E	HOLD	E	FA	GUARD Rlse
S	S	Rlse	FA	FE
HTR	AC	+VE	FAIL	FAIL

FIG. 11.

1/8" WHITE CHARACTERS (NOT TO BE ENGRAVED)

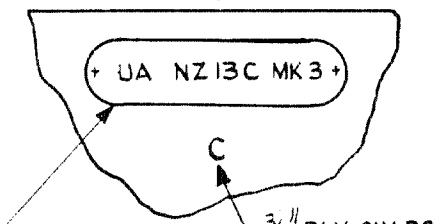
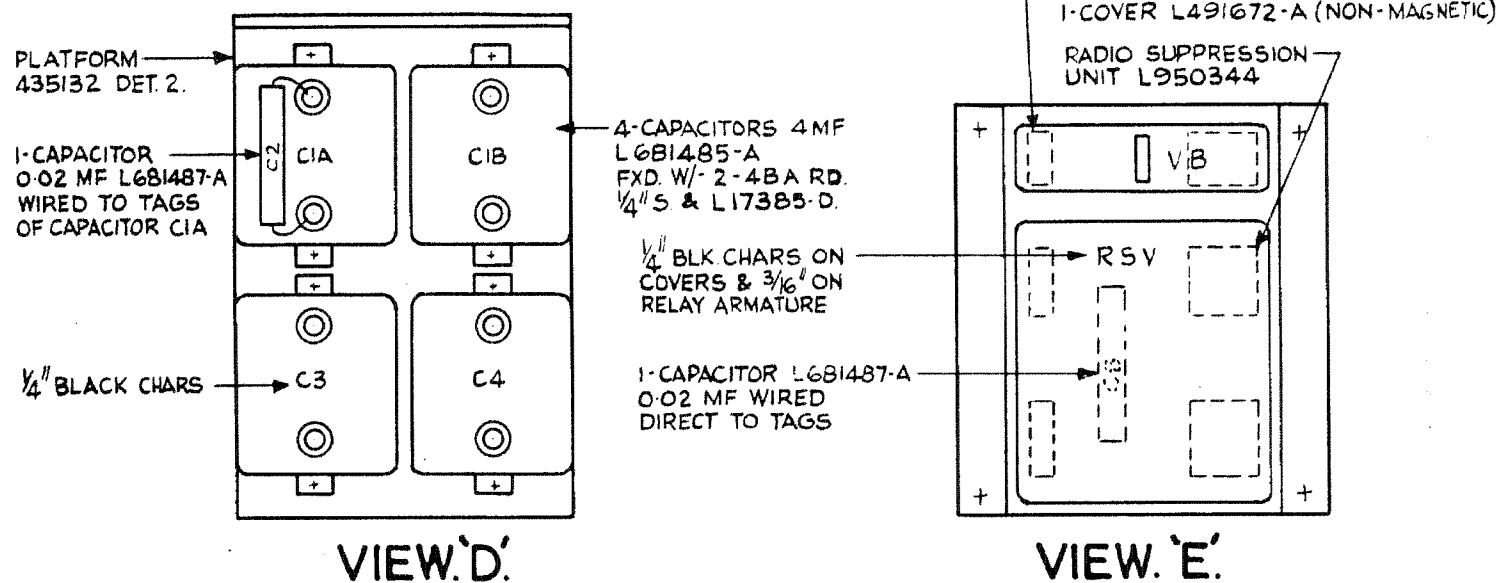


FIG. 12.

LABEL L781108-A FXD. W/- 2-Nº 4 WD. CSK. 3/8" B ENGRAVED TO L53001 SIZE 12A1. FILLED IN WHITE



VIEW 'D'

VIEW 'E'

NOTES:-

- 5-1 MARKING - BLACK & BROWN SURFACES TO BE MARKED IN WHITE. ALL CHARACTERS TO BE 1/8" EXCEPT WHERE OTHERWISE STATED.
- 5-2 IN FIG 10 VIEWS A,B,C POSITIONS TO BE MARKED AS SHOWN IN TABLE BELOW

SYMBOL	FUSE AMPS	COLOUR OF FILLING
B	5	BLUE
Y	1.0	YELLOW
R	1.5	RED
N	3.0 & SPARE	NONE

ISSUE	APP.
1. 10. 5. 61	AC
2. C.O. 2570 IN VIEW 'B' PP. DELETED FIG. 11. PLATES WERE ENGRAVED 12A1.	AC
1-8-62	SB

REF.

FU.FG. 2/807616

TYPICAL EQUIPMENT COMBINED M.D.F. I.D.F. & MISC. EQUIPT RACK 'C' MARK 3. UNIT AUTO. NZ.13.

DRAWN B.A.D.	ENGINERS	APPROVED	DRFT. ENG
TRACED 7/3/61			
CHECKED L.M.			

495272 SHS 5

AUTOMATIC TELEPHONE & ELECTRIC CO. LTD LIVERPOOL

G

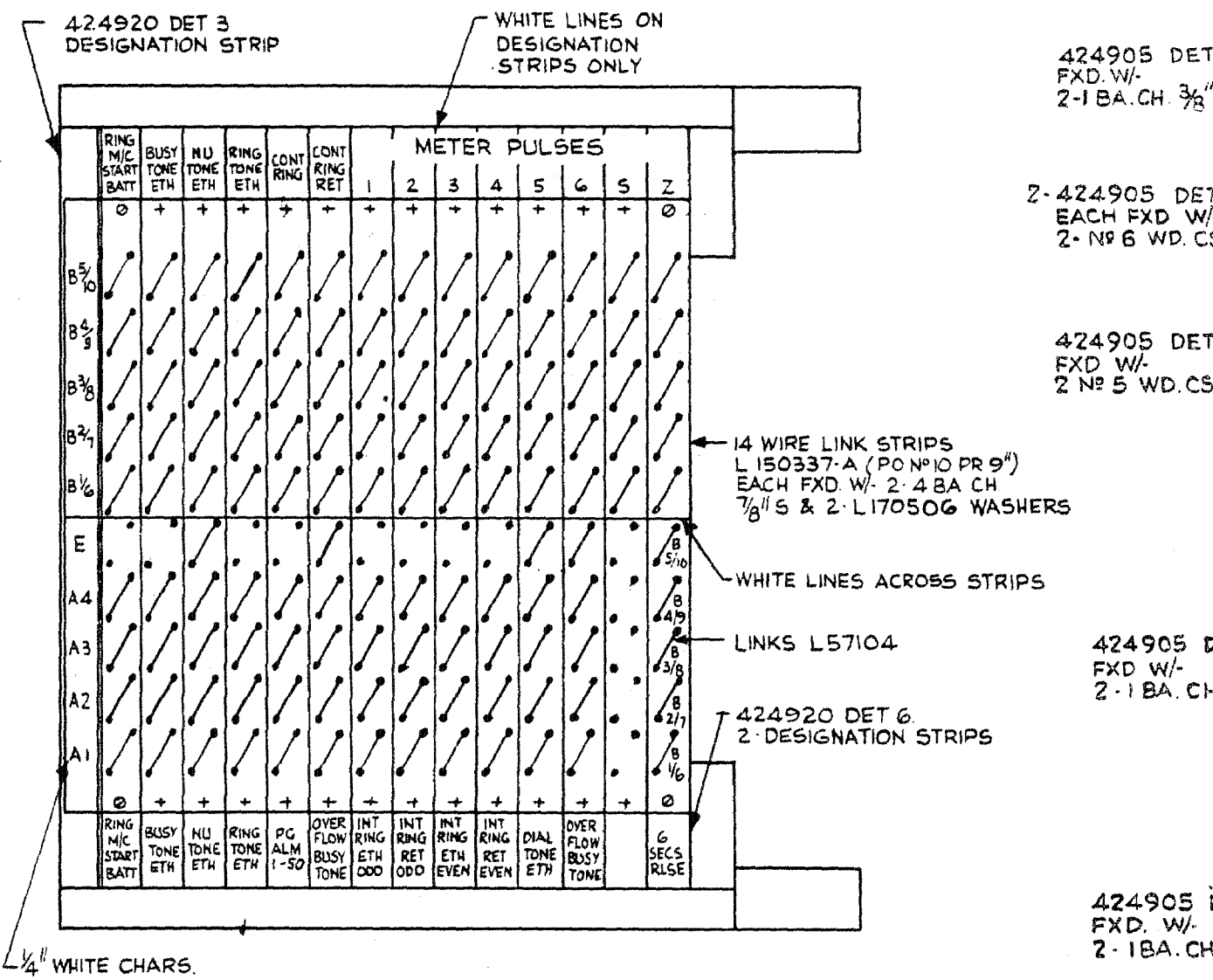


FIG. 14. (NOTE 5-1)

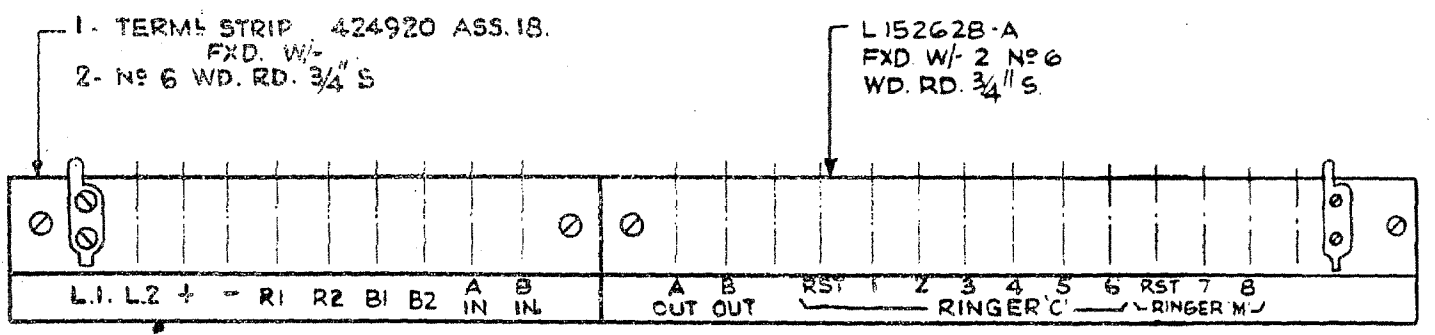


FIG. 15. (NOTE 5.1)

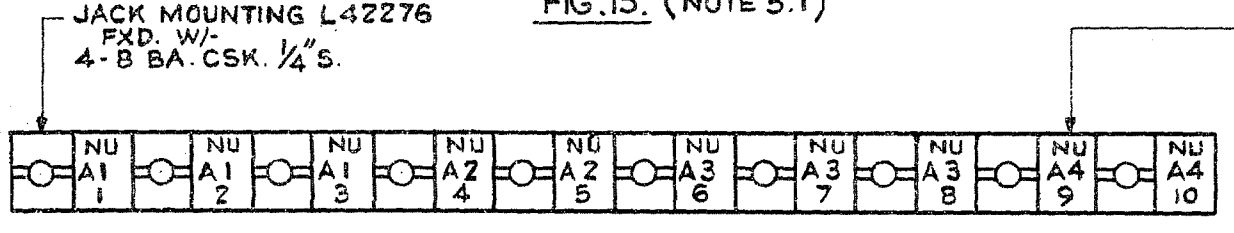


FIG. 16.

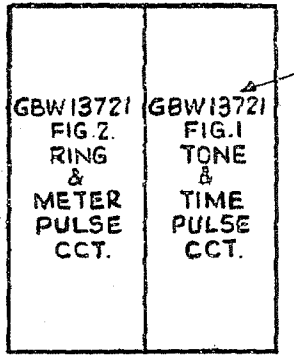


FIG. 18.

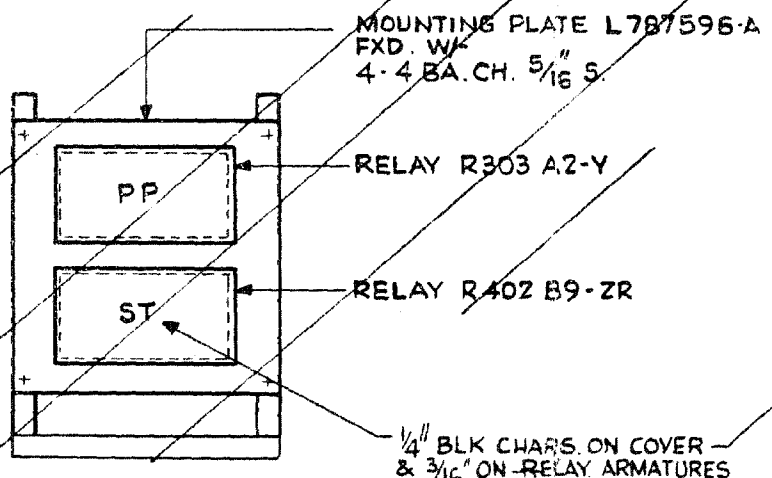


FIG. 19.

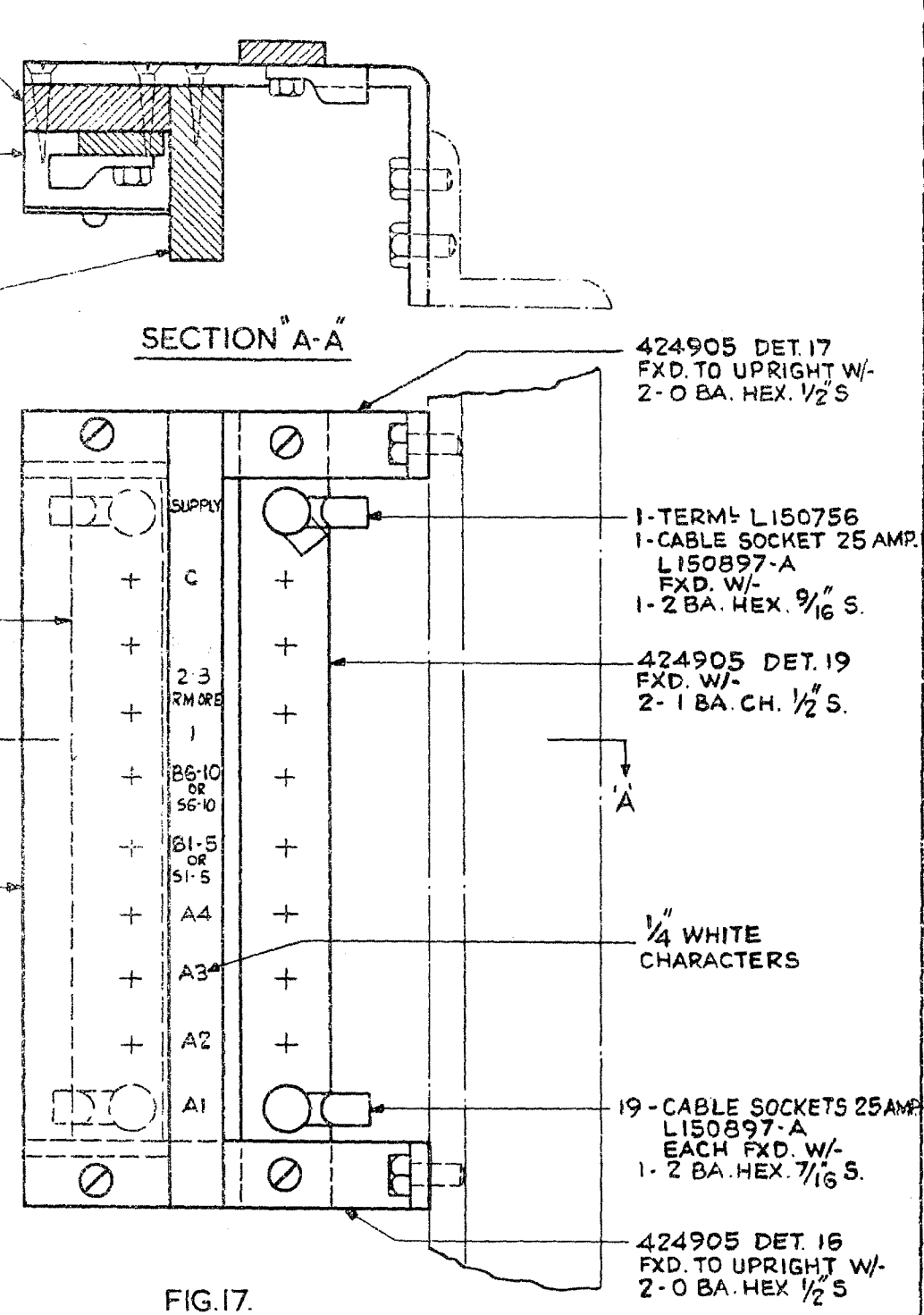


FIG. 17.

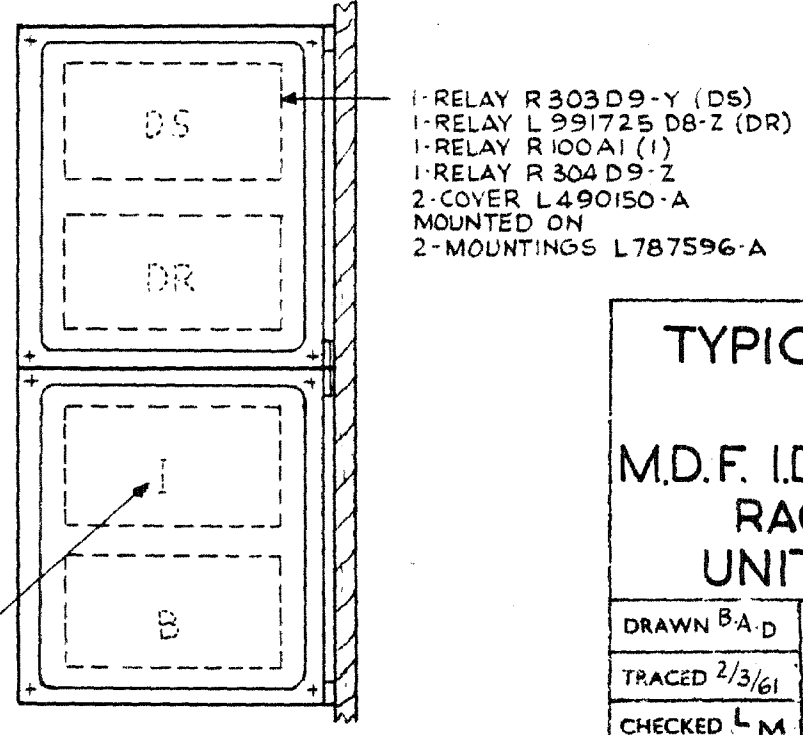
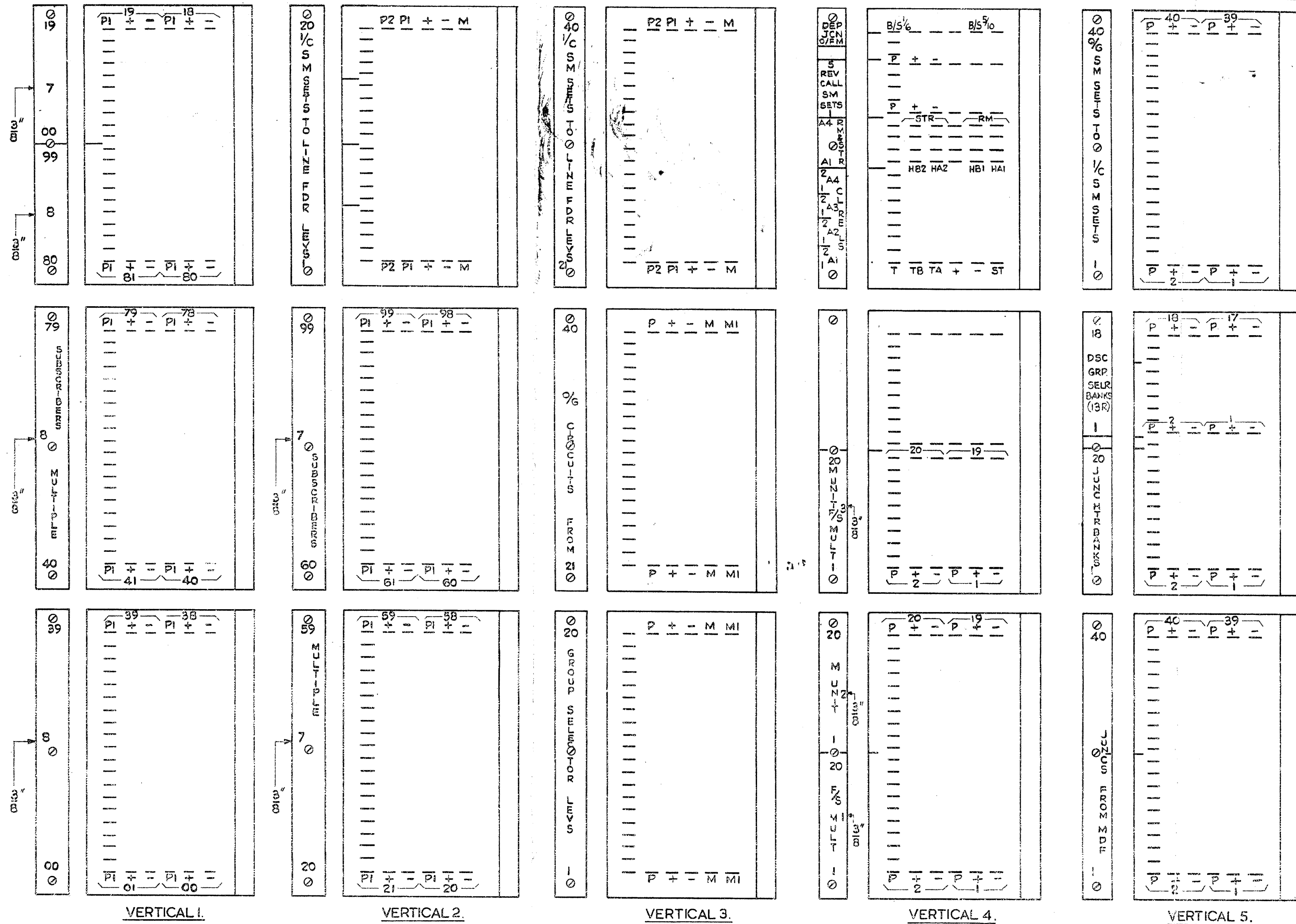


FIG. 13.

ISSUE		200
1	10-5-61	46
C.O. 2570 IN FIG. 14. PIP-PIP 2. TONE & FIG. 19 DELETED.		531
1-8-62		92

TYPICAL EQUIPMENT. COMBINED M.D.F. I.D.F. & MISC. EQUIPT. RACK 'C' MARK 3 UNIT AUTO. NZ. 13.

DRAWN B A D	ENGINERS	APPROVED	DRFT. ENG.
TRACED 2/3/61	JSD		
CHECKED L M			



VERTICAL 1. VERTICAL 2. VERTICAL 3. VERTICAL 4. VERTICAL 5.

POSITIONS DRAWN AS SEEN FROM MULT SIDE

FIG. 20.

- NOTES -
- 7-1 MARKING ON SIDES OF STRIPS CONN TO BE IN 1/8" WHITE CHARS
 - 7-2 MARKING ON FRONT EBONITE STRIPS TO BE IN 1/8" WHITE CHARS. UNLESS OTHERWISE SPECIFIED.
 - 7-3 ALL LINES ON SIDES OF STRIPS CONN. OR ON FRONT EBONITE STRIPS TO BE WHITE.
 - 7-4 JUMPER SIDE OF TAG IS SHOWN, ALL MARKING ADJACENT TO TAGS SHALL BE ON BOTH SIDES OF STRIPS CONN.

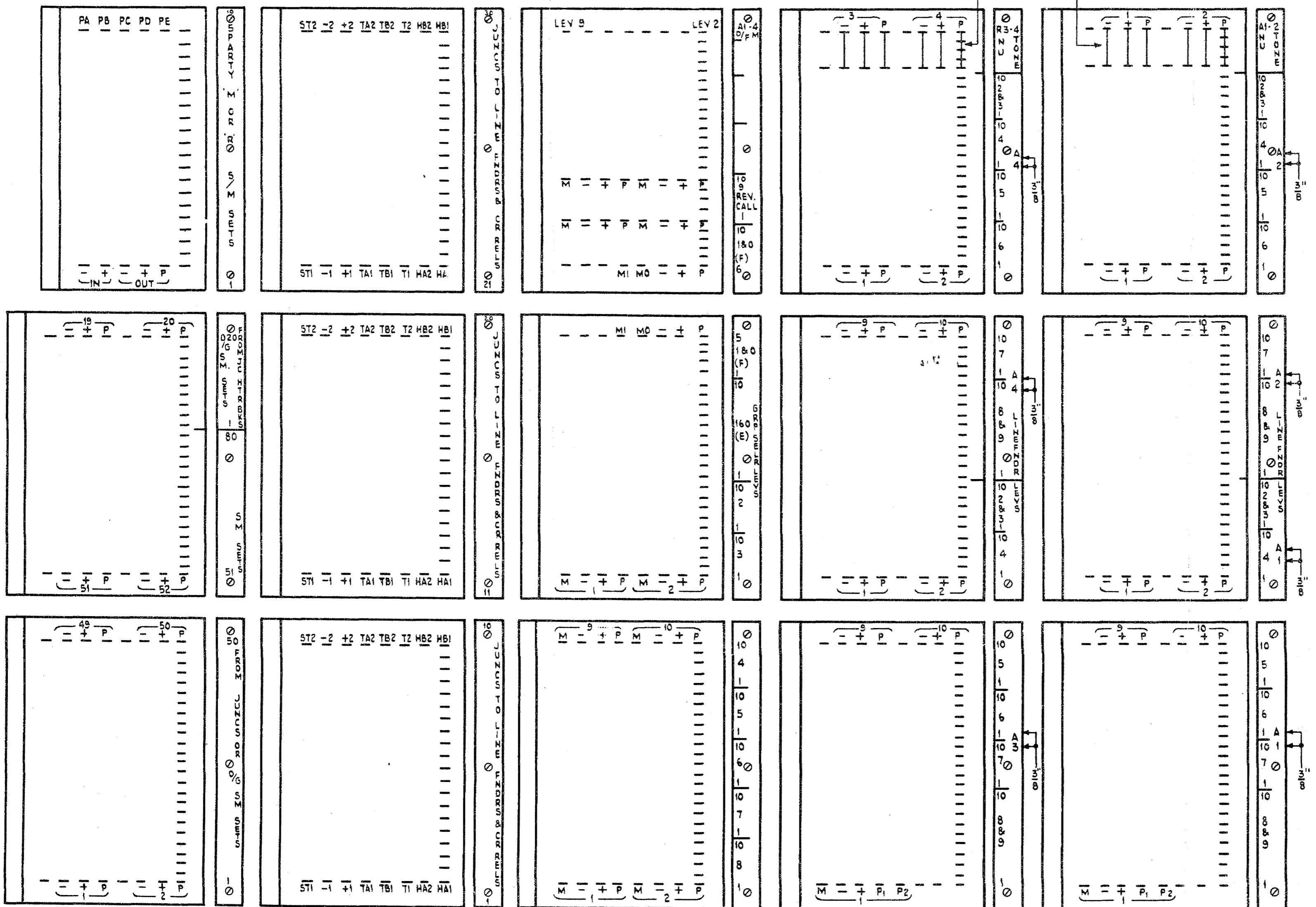
ISSUE	APP
10. 5. 61	25
REF -	
FU FO. 2/807616.	

**TYPICAL EQUIPMENT
COMBINED
M.D.F. IDF & MISC. EQUIPT.
RACK 'C' MARK 3
UNIT AUTO. N.Z. 13.**

DRAWN B.A.D.	ENGINEERS	APPROVED	ENG'G
TRACED 2/3/61	JSR	DRAFT	16.5.61
CHECKED L.M.			

BTC STRAPS TO BE WIRED ON TAGS AT REAR OF TERM STRIPS.

ISSUE APP
1 16.5.61



- NOTES.**
- 2-1 MARKING ON SIDES OF STRIPS CONN. TO BE IN 1/8" WHITE CHARACTERS.
 - 2-2 MARKING ON FRONT EBONITE STRIPS TO BE IN 1/8" WHITE CHARACTERS EXCEPT WHERE OTHERWISE SPECIFIED.
 - 2-3 ALL LINES ON SIDES OF STRIPS CONN. OR ON FRONT EBONITE STRIPS TO BE IN WHITE.
 - 2-4 JUMPER SIDE OF TAG IS SHOWN ALL MARKING ADJACENT TO TAGS SHALL BE ON BOTH SIDES OF STRIPS CONN.

VERTICAL 1.

VERTICAL 2.

VERTICAL 3.

VERTICAL 4.

VERTICAL 5.

POSITIONS DRAWN AS SEEN FROM LOCAL SIDE

FIG. 21.

REF.

FU.FD. 2/807616

**TYPICAL EQUIPMENT
COMBINED
M.D.F., I.D.F. & MISC EQUIPT.
RACK 'C' MARK 3
UNIT AUTO NZ. 13**

DRAWN B.A.D.	ENGINEERS	APPROVED DRT/ENG	<i>[Signature]</i>
TRACED 2/3/61			
CHECKED 4.M.			<i>[Signature]</i> 16.5.61

495272 SHT 8 AUTOMATIC TELEPHONE & ELECTRIC CO. LTD LIVERPOOL J