

NOTES:-
 6-PROTECTORS FOR LINES 800-799 & JUNCES 1-20 TO BE FITTED BY SHOPS.
 FOR IRON FRAMEWORK SEE 435148
 FOR CABINET ASSEMBLY SEE 433833

MATERIAL SUPPLIED BY NZ PO

PROTECTORS (ADDITIONAL) PO # 408
 M.D.F FUSE MTGS PO 4028
 M.D.F FUSE MTGS PO 4001
 1-TELEPHONE & BELL SET
 1-DIAL SPEED TESTER PO # 43
 1-DETECTOR PO # 4
 1-PRESS BUTTON

TYPICAL EQUIPMENT. COMBINED MDF, IDF, & MISC. EQUIPT. RACK. UNIT AUTO N.Z. 13 C.MK.2.

DRAWN: Jm	ENGINERS	APPROVED	ENG.
TRACED: 29/12/55	JM 29/12	DRAFT	HWB
CHECKED: JC			

FU: FO-2/806502

FIGS 2, 3 & 4
THESE DESIGNATIONS TO BE
SUITABLY POSITIONED
NEAR RELATIVE TERMS

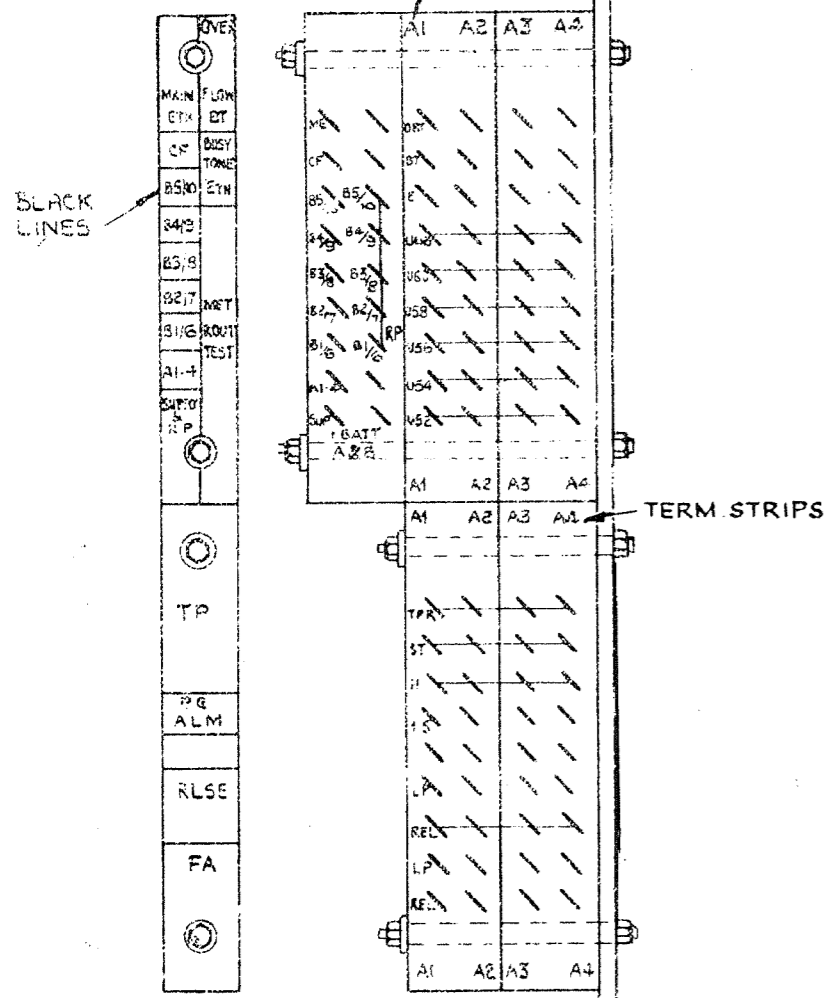


FIG. 2.

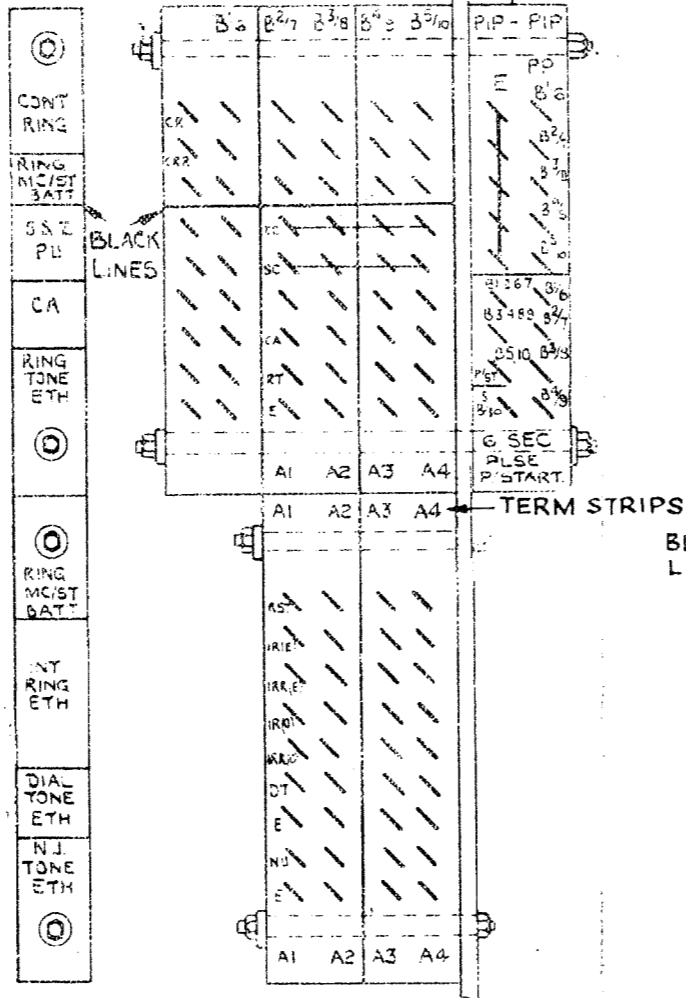


FIG. 3.

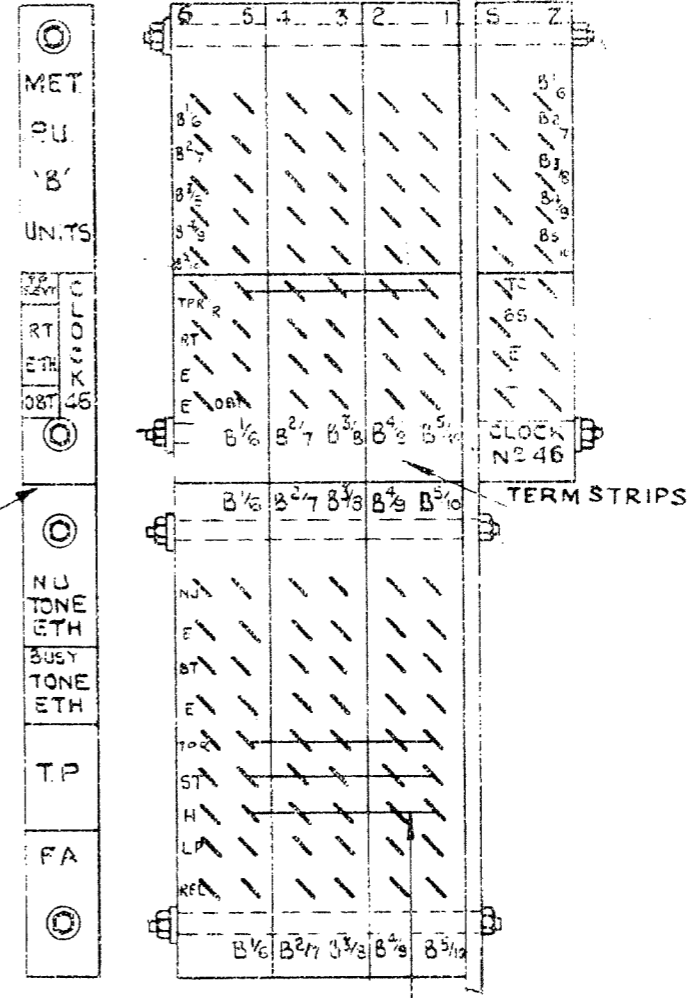
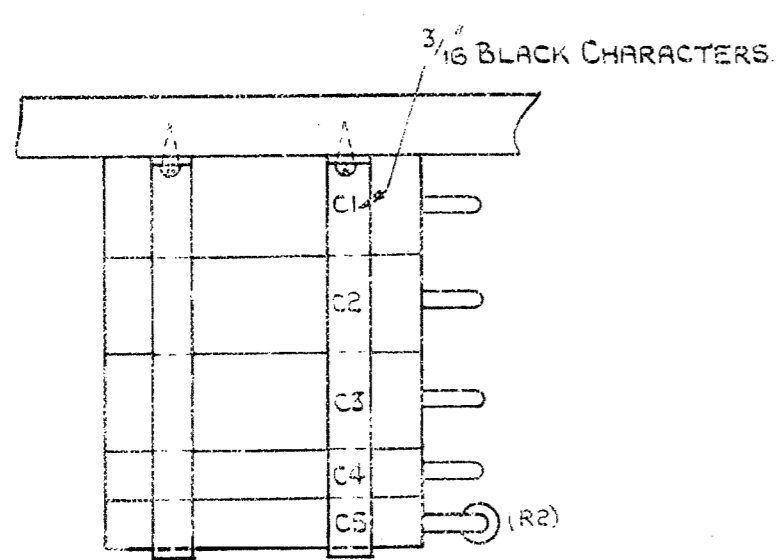


FIG. 4.

25 SW G
B.T.C. STRAPS.
ON FIGS 2, 3 & 4.



CODES OF CAPACITORS
C1-C2-C3-L 68337-2 MF
C4-C5-L 68068-1MF (R2)-RESISTANCE-L 28352

FIG. 5.
REAR PLAN VIEW

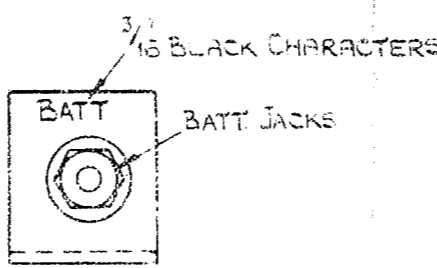


FIG. 6.

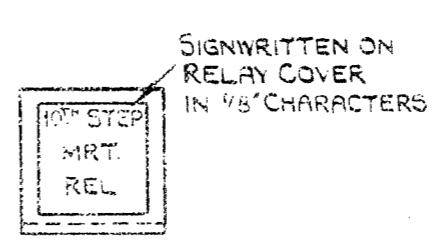


FIG. 7.

REF:-
FU:FO- 2/806502

TYPICAL EQUIPMENT.
COMBINED MDF, IDF,
& MISC. EQUIPT. RACK.
UNIT AUTO N.Z. 13 C.MK.2.

DRAWN <i>J.M.</i>	ENGINERS	APPROVED	DRAFT ENG. <i>W.H.B.</i>
TRACED <i>22/12/55</i>	<i>J.S.M.</i> <i>29/12</i>		
CHECKED <i>J.C.</i>			

1.	30. 12. 55	WLB
2.	CO. 6612. IN FIG 8. R2 WAS R1 & R1 WAS R2	Jm Jm
	6 - 6 - 56	HPB

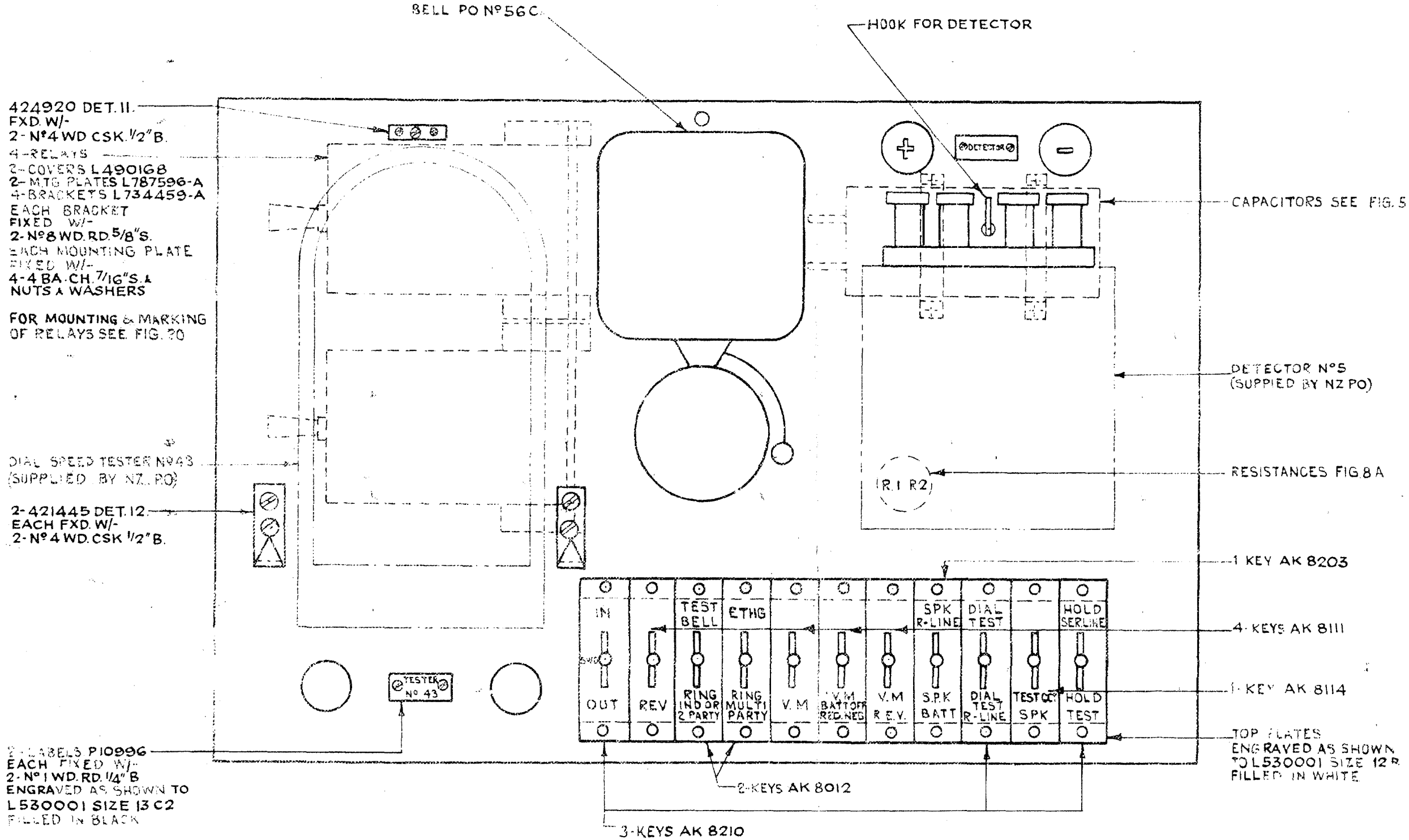


FIG. 8 FRONT VIEW

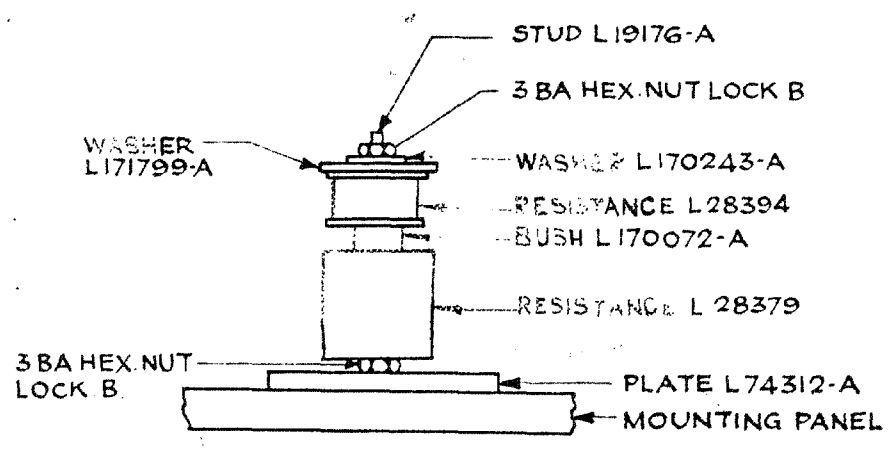


FIG. 8A

REF:-
FU:FO: 2/806502

TYPICAL EQUIPMENT.
COMBINED MDF, IDF,
& MISC. EQUIPT, RACK.
UNIT AUTO N.Z. 13C.MK.2.

DRAWN. Jm	ENGINEERS	APPROVED	WLB
TRACED 22/12/55	Jm	DRAFT ENG.	WLB
CHECKED. Jm			

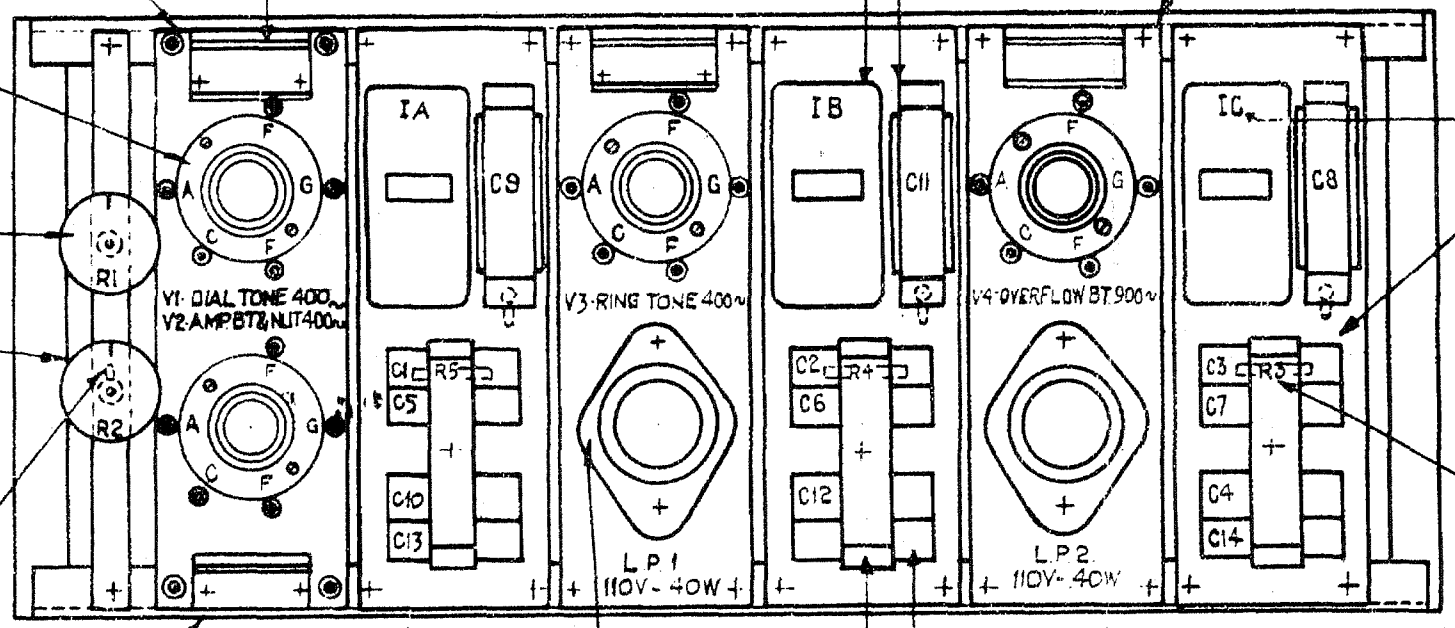
- 4- VALVE HOLDERS L 540216 EACH FIXED W/ 2- G BA. CH. 5/8" S & 2- HEX NUTS 2- SHAKEPROOF WASHERS EACH EQUIPPED W/ 1- VALVE L 94172 OSRAM KT2 CV 1118.

- 1- BAKELITE PANEL 682291 DET.10. FIXED W/ 4-4 BA. CH. 7/16" S. 4- HEX. NUTS 4- WASHERS L 170676 4- WASHERS L 17385D (1/8" SIGNWRITTEN CHARACTERS).

- 3- TEST JACK ASSEMBLIES EACH FITTED W/ 1- BLOCK L 660234 1- INSULATOR L 440233-A 6- SPRINGS L 105216-A FIXED TO 1- BRACKET L 733069-A 2- G BA. CH. 7/16" S. W/ BRACKET FIXED TO PANEL W/ 2-4 BA. CSK. 3/8" S. 2- HEX. NUTS 2- WASHERS L 17385-D (SEE VIEW 'A' FOR MOUNTING) EACH FITTED W/ 1- U-LINK L 61468-A

- 3- RETARDS R 100-A1. EACH W/ COVER & BASE 3- CAPACITOR MTGS L 622137-A EACH FXD. W/ 2-4 BA. CH. 5/16" S. 2-4 BA. HEX. NUT 2- WASHERS L 17385-D 1- SH'PROOF TAG

- 2- BAKELITE PANELS 682291 DET. B. EACH FXD. W/ 4-4 BA. CH. 7/16" S. 4- HEX. NUTS. 4- WASHERS L 170676-A 4- WASHER L 17385-D. (1/8" SIGNWRITTEN CHARACTERS)



- 3-1/16 SIGNWRITTEN CHARACTERS. 3- PANELS 682291 DET. 9. 16 S.W.G. M.S. SHEET EACH FXD W/ 4-4 BA. CH. 3/8" S. 4- HEX. NUTS. 4- WASHERS L 170676-A 4- WASHER L 17385 D. (1/8" SIGNWRITTEN CHARACTERS) 3- RESISTANCES L 276074-H. 10,000 Ω. CAPACITOR SPACER L 49808-A.

- 2- RESISTORS (FOR MTG SEE VIEW "B") 8 WHITE CHARACTERS

- 1- SH'PROOF TAG

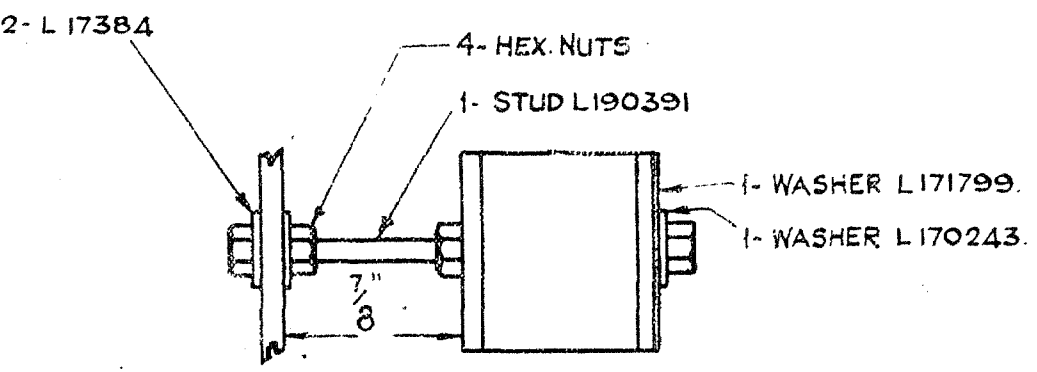
- 1- TEST JACK ASSY FITTED W/ 1- BLOCK L 660234-A 1- INSULATOR L 440233 5- SPRINGS L 105216-A FIXED TO 1- BRACKET L 734355 1- U-LINK L 61468-A BRACKET FXD TO PANEL W/ 2-4 BA. CSK. 3/8" S. 2- HEX. NUTS. 2- L 17385-D WASHER (SEE VIEW 'A' FOR MTG)

- 2- LAMP HOLDERS L 540299-A EACH FXD W/ 2- G BA. CH. 11/32" S. 2- HEX. NUTS. 2- WASHERS L 17385-D EQUIPPED W/ 2- TRACTION LAMPS 110V 40W ES

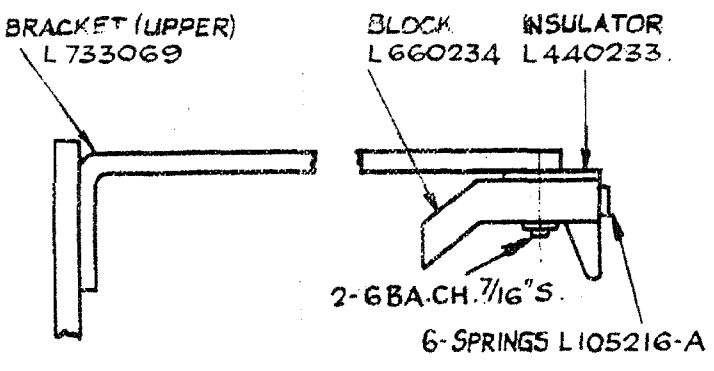
- 3- CAPACITOR MTGS L 62793

CODES OF RELAYS ETC.

- RELAYS:
- IA) R 100-A1
 - IB) R 100-A1
 - IC) R 100-A1
- CAPACITORS:
- C1) L 680737 0.01MF.
 - C2) L 680737 0.01MF.
 - C3) L 68391 0.005MF.
 - C4) L 68391 0.005MF.
 - C5) L 68339 0.02MF.
 - C6) L 68339 0.02MF.
 - C7) L 68339 0.02MF.
 - C8) L 68350 0.05MF.
- RESISTANCES:
- R1) L 285159
 - R2) L 285159
 - R3) L 276074-H.
 - R4) L 276074-H.
 - R5) 10000 Ω



VIEW 'B'



VIEW 'A'

BRACKET (LOWER) L 734355

FIG. 9

NOTE: FOR IRON FRAMEWORK SEE 682291 FOR EQUIPMENT AS FITTED ON UNIT SEE 682296

REF:- FU:FO: 2/806502

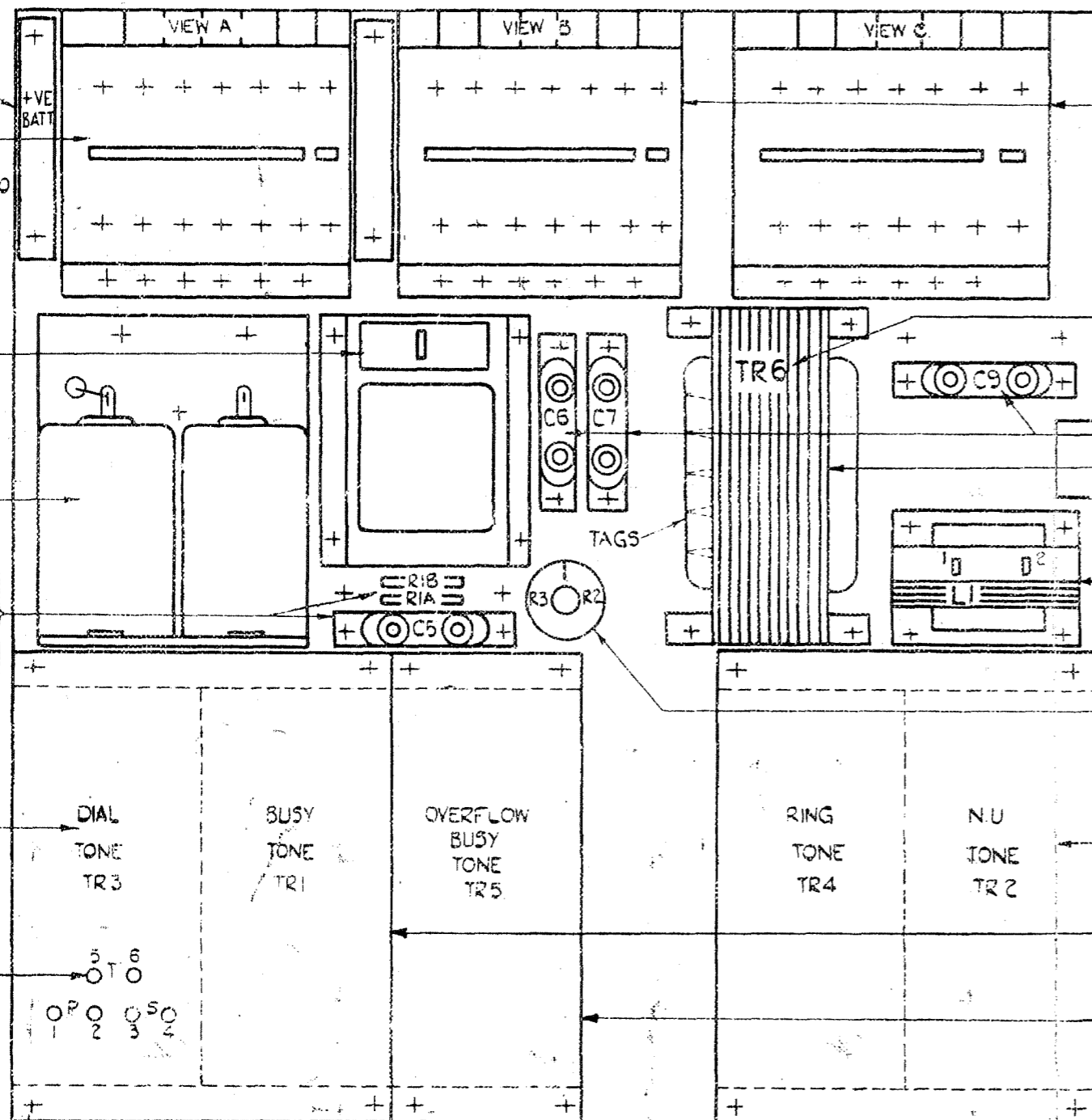
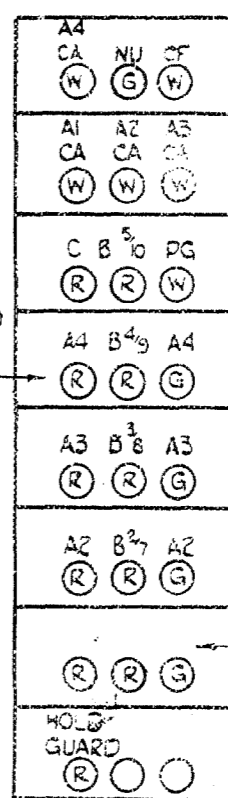
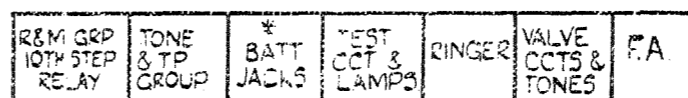
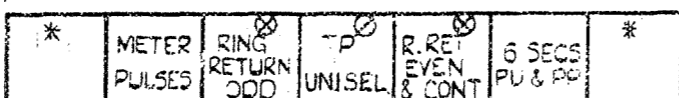
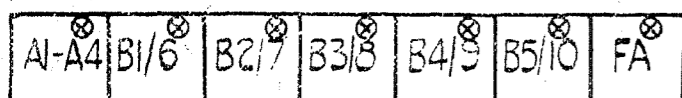
TYPICAL EQUIPMENT. COMBINED MDF., IDF., & MISC. EQUIPT. RACK. UNIT AUTO N.Z. 13C. MK.2.

DRAWN J.M.	ENGINEERS	APPROVED	DRAFTING
TRACED 22/12/55	J.M. 29/12		
CHECKED J.C.J.			

494384 SH.4 AUTOMATIC TELEPHONE & ELECTRIC CO. LTD. LIVERPOOL G

RED CHARACTERS. SEE NOTE 2.

WHITE CHARACTERS SEE NOTE 2



2-FUSE MOUNTINGS PO. NO 731A L-6734G

LAMP JACK STRIPS PO. NO 40 L42447-A EACH FXD. W/ 2 SCREWS L76915-A ENGRAVING TO BE L530001 SIZE 12A1 FILLED IN WHITE

3 1/16 WHITE CHARACTERS ON TRANSFORMER & CHOKE

3 CAPACITORS L681484-A 0.5 MF. FIXED W/ 2-4BA RD 1/4 5 & L17385-D

TRANSFORMER L950337 FIXED W/ 4-0BA RD 5/8 5 & L17382-D

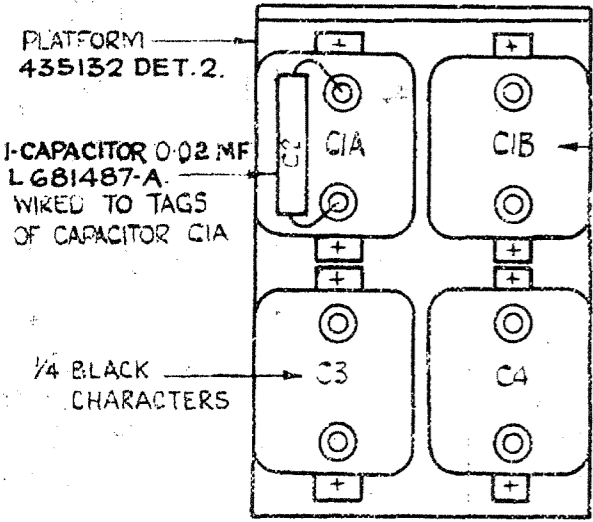
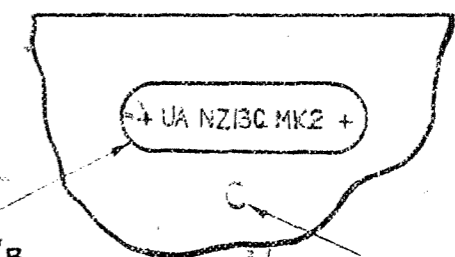
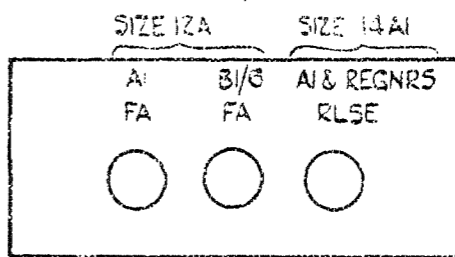
CHOKE L950338 FIXED W/ 4-4BA RD 5/16 5 & L17385-D

2-RESISTANCES L 28429

5-TRANSFORMERS PO. 42A. L95055.

2-TAG SHIELDS 424922 DET. 33. 1-TAG SHIELD 433839 DET. 18.

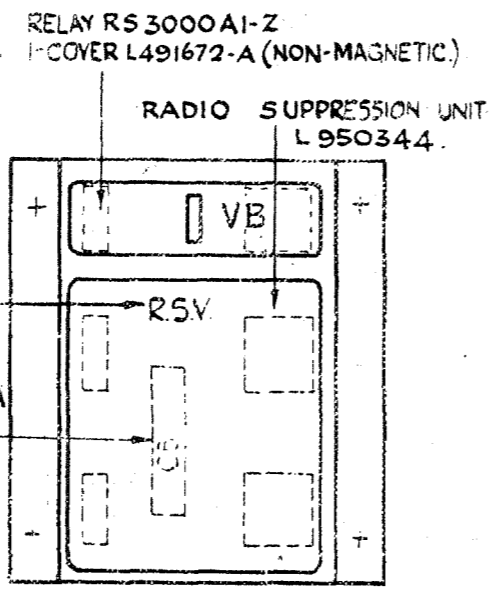
LABEL L781108-A FXD. W/ 2-N°4 WD. CSK 3/8 B ENGRAVED TO L530001 SIZE 12A1. FILLED IN WHITE



4-CAPACITORS 4-MF L681485-A. FXD W/ 2-4BA RD 1/4 5 & L17385-D

1/4 BLACK CHARACTERS ON COVERS & 3/16 ON RELAY ARMATURE.

1-CAPACITOR L681487-A 0.02 MF WIRED DIRECT TO TAGS



RELAY RS 3000 AI-Z 1-COVER L491672-A (NON-MAGNETIC)

RADIO SUPPRESSION UNIT L950344.

NOTES

- 5-1 SIGNWRITING - BLACK & BROWN SURFACES TO BE SIGNWRITTEN IN WHITE. ALL CHARACTERS TO BE 8 EXCEPT WHERE OTHERWISE STATED
- 5-2 IN FIG 10 VIEWS A B C POSITIONS TO BE MARKED AS SHOWN IN TABLE BELOW.

FUSE RATING	SYMBOL	COLOUR OF FILLING
0.5 AMPS	⊗	BLUE
1.0 AMPS	⊘	YELLOW
1.5 AMPS	NONE	RED
3.0 AMP & SPARE	*	NONE

ISSUE			APP'D	
1.	30	12	56	HWB
2.	CO. 6405 IN FIG 10 FXG FOR CAPCTRS L681484, CHOKE L950338 & CAPCTR L681486 AND 2 RESIS. WERE NOT SHOWN. ON VIEW D FXG FOR CAPCTRS L681485A WERE NOT SHN. FXG. FOR TRANSFORMER L950337 WAS NOT SHOWN			JMC
	13	6	56	HWB

TYPICAL EQUIPMENT. COMBINED MDF, IDF, & MISC. EQUIPT. RACK. UNIT AUTO N.Z. 13C. MK.2.

DRAWN: J.M. TRACED: 22/12/55 CHECKED: J.C. ENGINEERS: J.S.R. 29/12 APPROVED: DRAFT: HWB

494384 SH.5. AUTOMATIC TELEPHONE ELECTRIC CO. LIVERPOOL

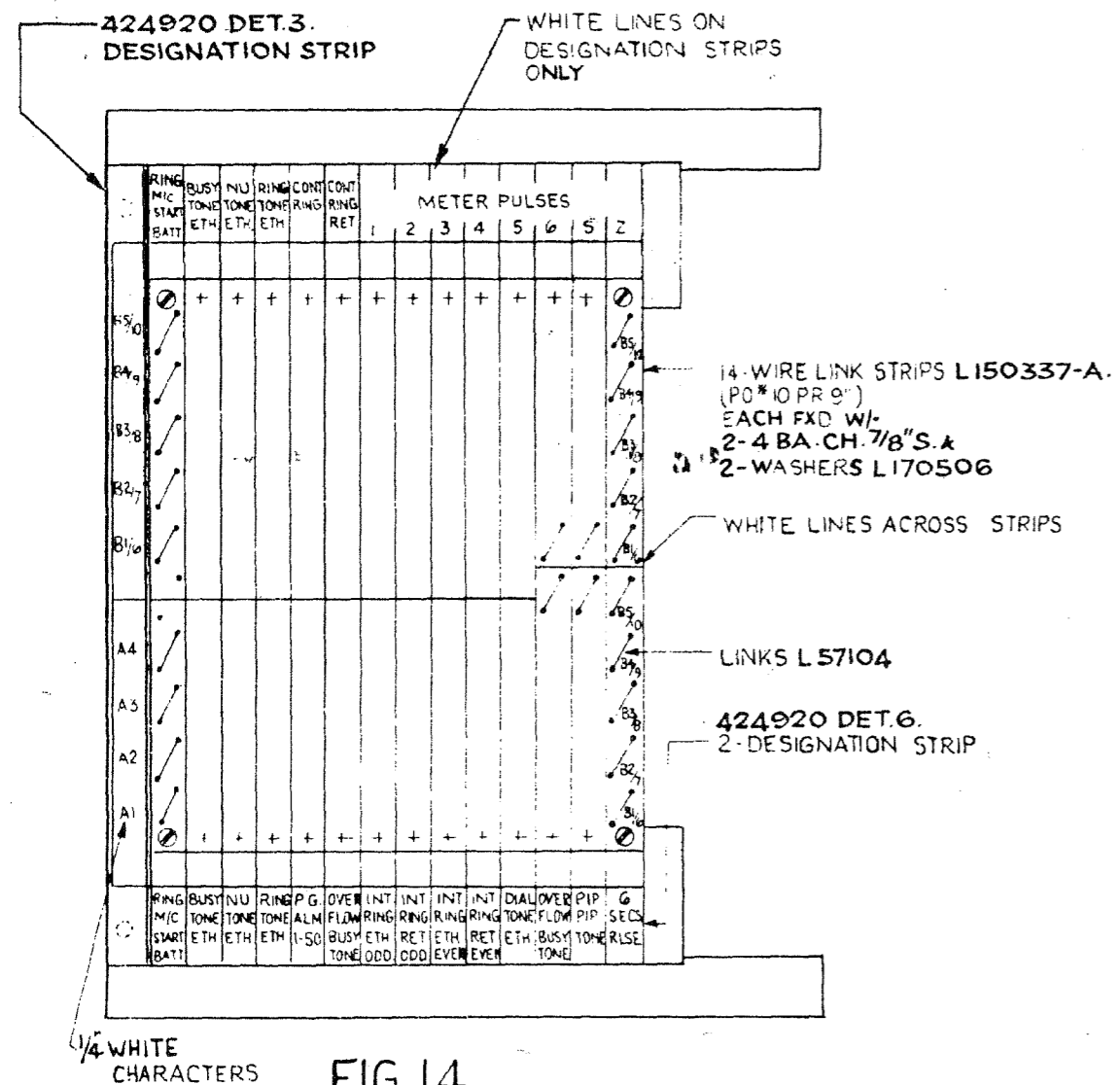
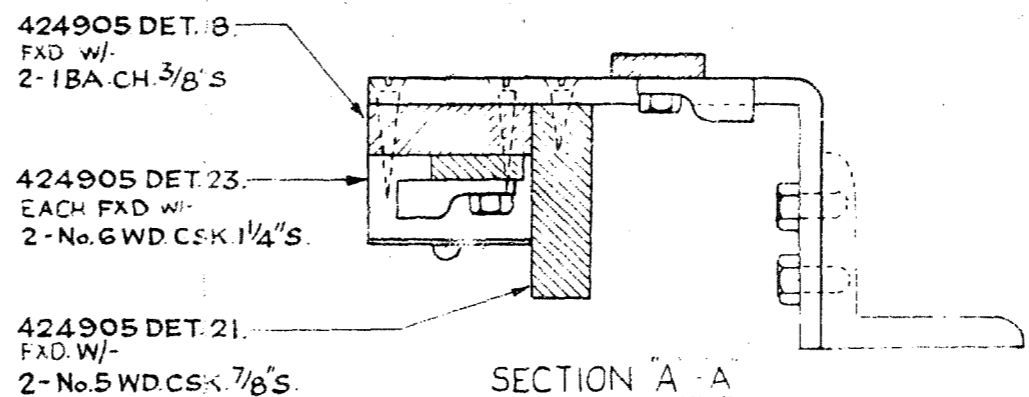


FIG. 14



SECTION A-A

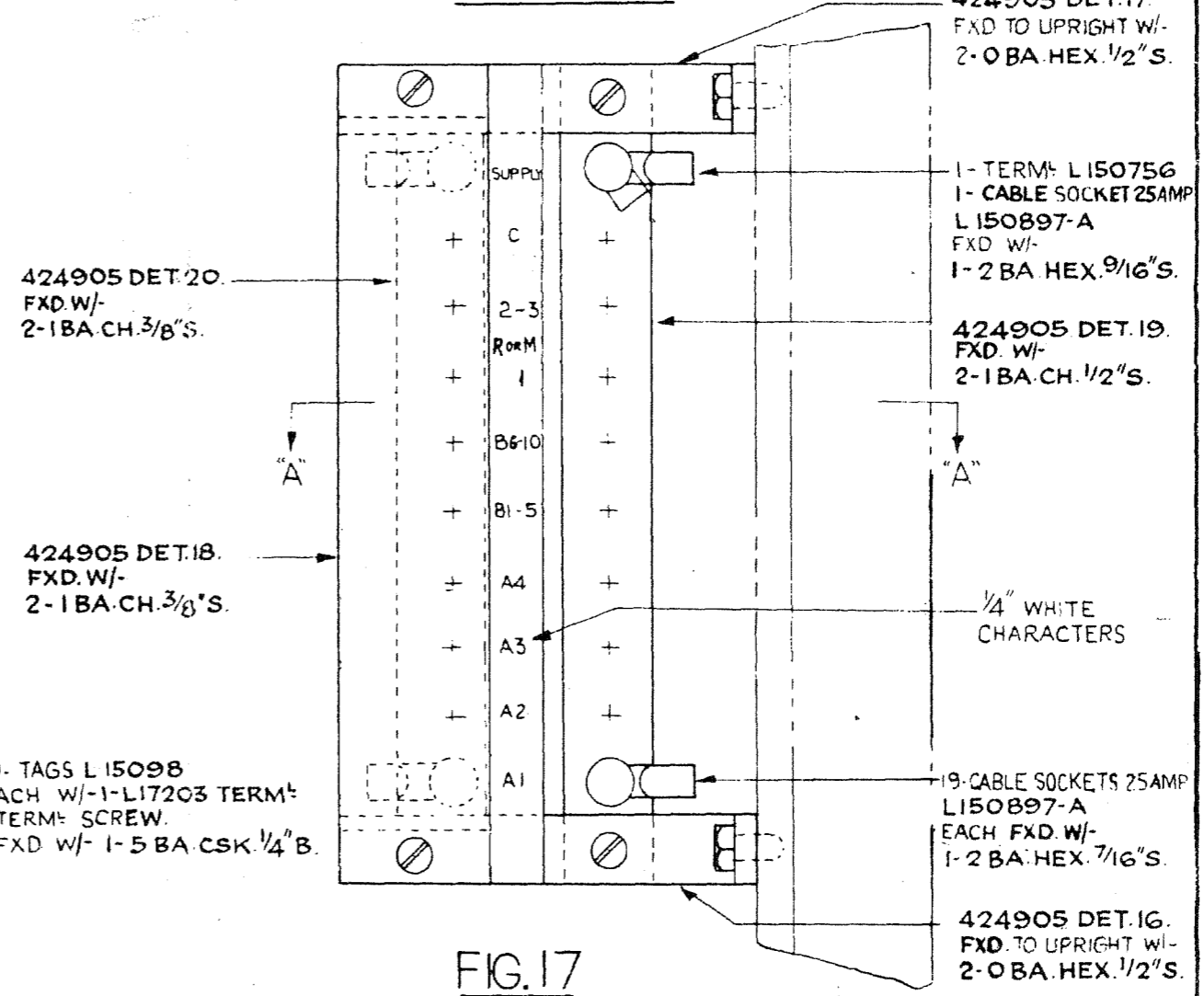


FIG. 17

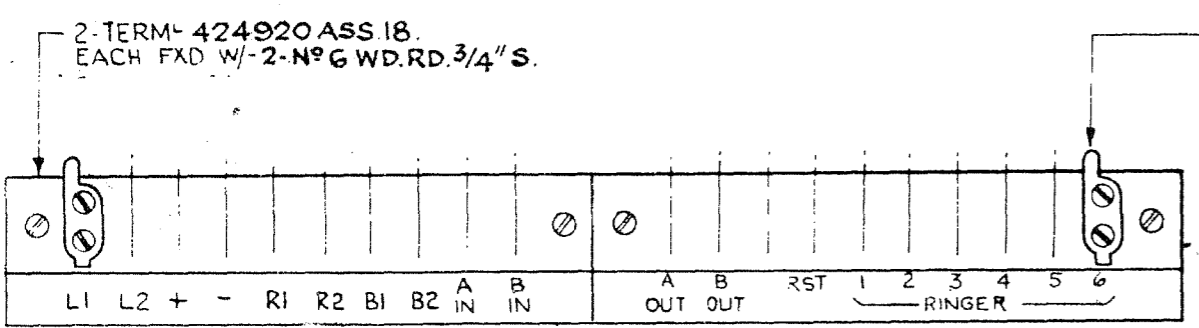


FIG. 15 (NOTE 5.1)

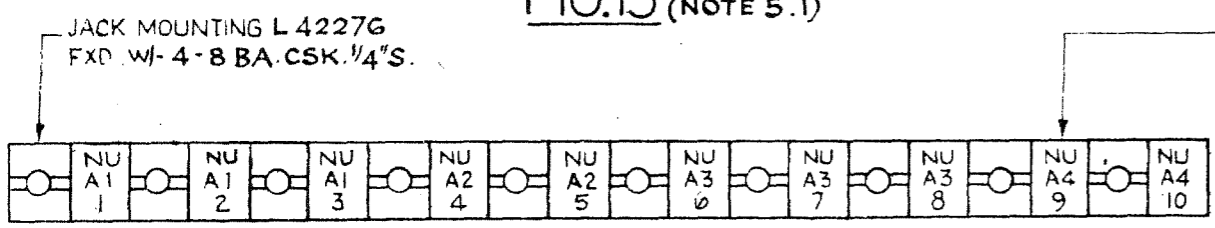


FIG. 16

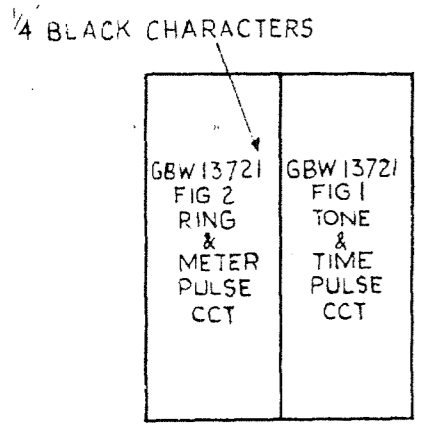


FIG. 18

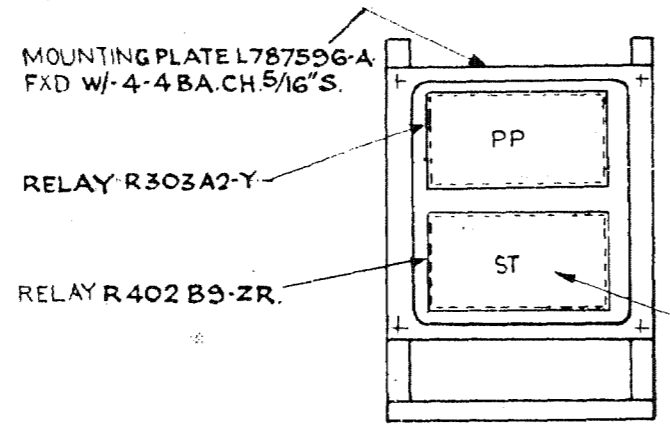


FIG. 19

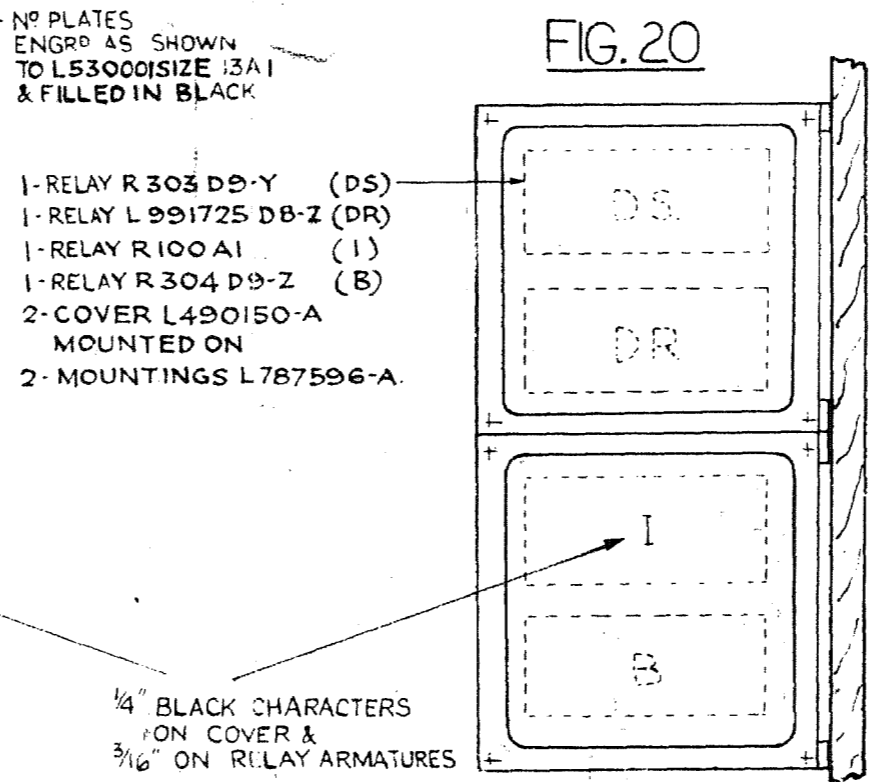


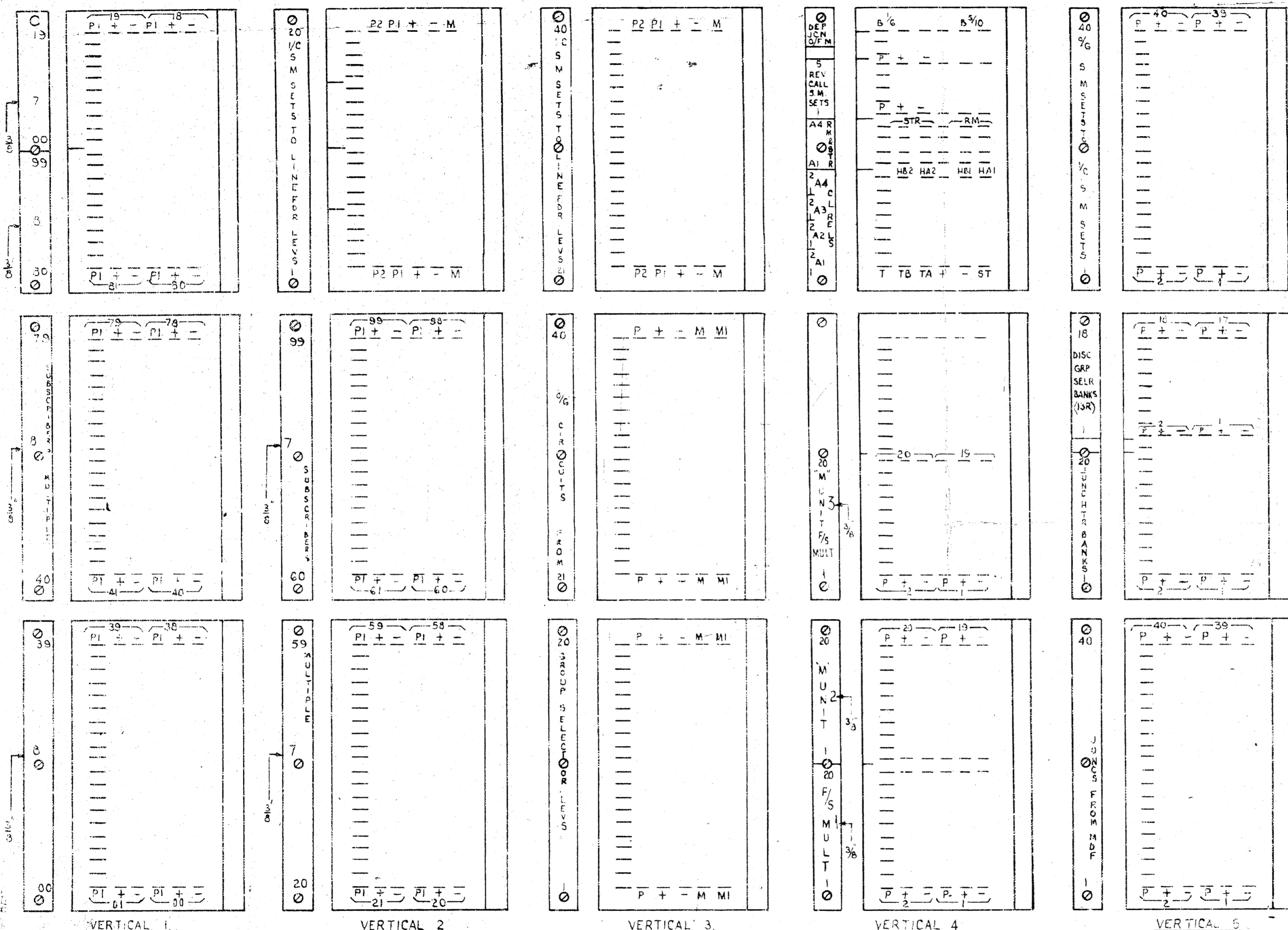
FIG. 20

REF:-

FU:FO:- 2/806502

**TYPICAL EQUIPMENT.
COMBINED MDF, IDF,
& MISC. EQUIPT. RACK.
UNIT AUTO N.Z. 13C.MK.2.**

DRAWN <i>Jm</i>	ENGINEERS	APPROVED	DRAFT ENG.
TRACED <i>22/12/55</i>	<i>50</i>	<i>29</i>	<i>12</i>
CHECKED <i>JC</i>			



- NOTES -
- 7-1 SIGNWRITING ON SIDES OF STRIPS CONN TO BE IN 1/8" WHITE CHARACTERS
 - 7-2 SIGNWRITING ON FRONT EBONITE STRIPS TO BE IN 1/8" CHARACTERS EXCEPT WHERE OTHERWISE SPECIFIED
 - 7-3 ALL LINES ON SIDES OF STRIP CONN OR ON FRONT EBONITE STRIPS TO BE IN WHITE
 - 7-4 JUMPER SIDE OF TAGS SHOWN. ALL SIGNWRITING ADJACENT TO TAGS SHALL BE ON BOTH SIDES OF STRIPS CONN

POSITIONS DRAWN AS SEEN FROM MULT SIDE.

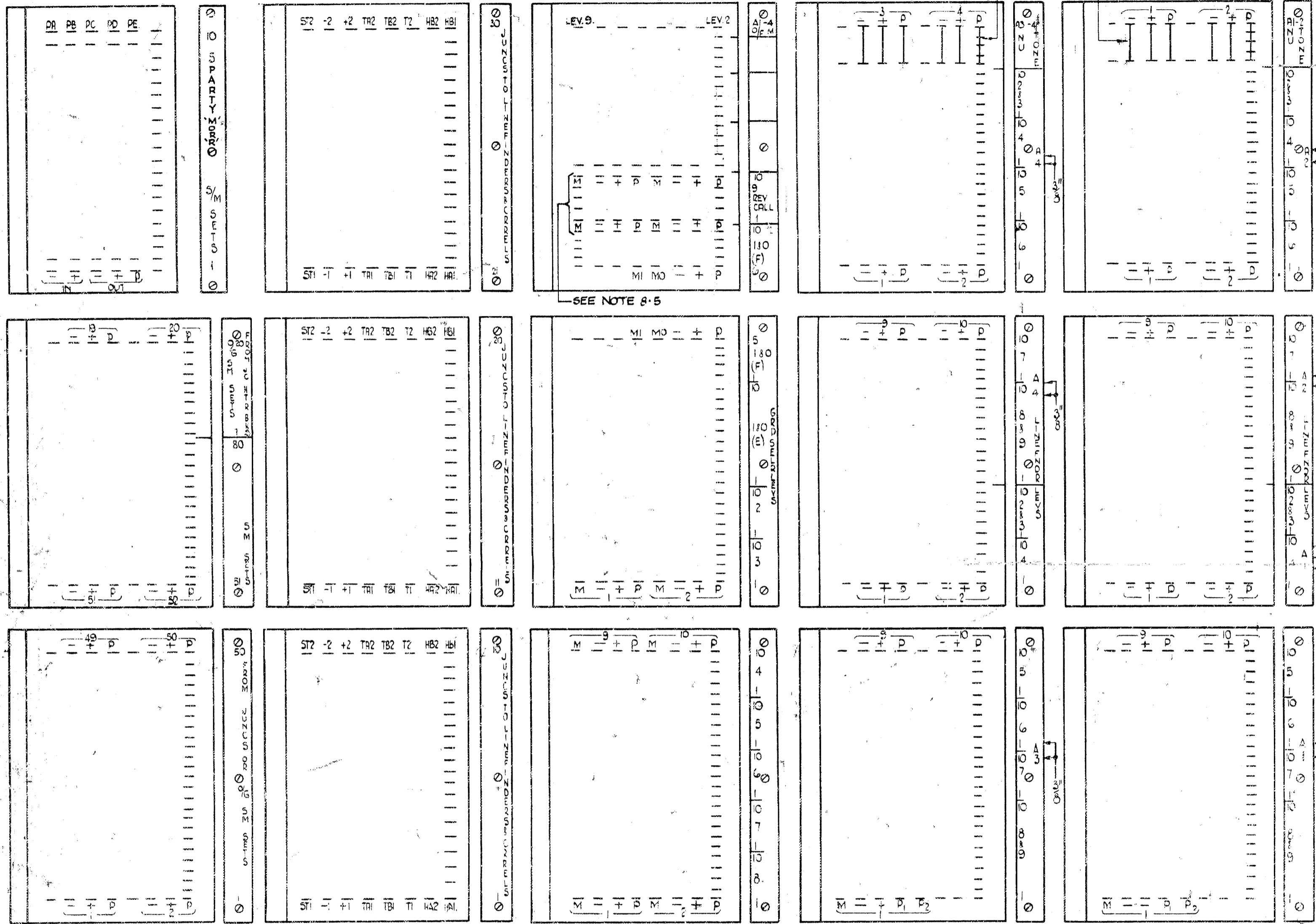
FIG 21.

REF: FU: FO: 2/806502

TYPICAL EQUIPMENT.
COMBINED MDF, IDF,
& MISC. EQUIPT. RACK.
UNIT AUTO NZ. 13C.MK.2

DRAWN	TRACED	CHECKED	ENGINEERS	APPROVED	ENGR
JCU	27/1/55	JCU	JCU	JCU	JCU

BTC STRAPS TO BE WIRED ON TAGS ON RIGHT HAND SIDE OF TERM. STRIP CONN AS SEEN FROM LOCAL SIDE.



A7268

VERTICAL 1

VERTICAL 2

VERTICAL 3

VERTICAL 4

VERTICAL 5

POSITIONS DRAWN AS SEEN FROM LOCAL SIDE.

FIG. 22

- NOTES**
- 8-1 SIGNWRITING ON SIDES OF STRIPS CONN TO BE IN 'B' WHITE CHARACTERS
 - 8-2 SIGNWRITING ON FRONT EBONITE STRIPS TO BE IN 'B' WHITE CHARACTERS EXCEPT WHERE OTHERWISE SPECIFIED
 - 8-3 ALL LINES ON SIDES OF STRIPS CONN OR ON FRONT EBONITE STRIPS TO BE IN WHITE
 - 8-4 ALL SIGNWRITING ADJACENT TO TAGS SHALL BE ON BOTH SIDES OF STRIPS CONN
 - 8-5 FOR REFERENCE ONLY. NOT TO BE SIGNWRITTEN.

ISSUE	APP
30. 12. 55	115
C.O. 6761	J.M.C.
NOTE 8-5 WAS NOT SHOWN ON VERTS.	
4 & 5 NOTE RE BTC STRAPS REVISED	
16 - 7 - 56	116

REF: REF A7268
FU: FO: 2/806502

TYPICAL EQUIPMENT. COMBINED MDF, IDF, & MISC. EQUIPT. RACK. UNIT AUTO N.Z.13C.MK.2.

DRAWN	APPROVED	ENGINEERS	DRAFTING
TRACED	15/12/55	29/12	
CHECKED			
494384 SH 8	AUTOMATIC TELEPHONE ELECTRIC CO. LIVERPOOL		