

FIG. 1

TYPICAL EQUIPMENT  
JUNCTION GROUP RACK  
UNIT AUTO. N.Z. 13 B

DRAWN R.F.	ENGINEERS	J.S.N.	APPROVED	DRAFT ENGR	W.E.F.
TRACED					HWB/J
CHECKED F.G.S.					
494064 SHT-1		AUTOMATIC TELEPHONE & ELECTRIC CO L <sup>TD</sup> LIVERPOOL		G	

REF.  
F.U.F.O.

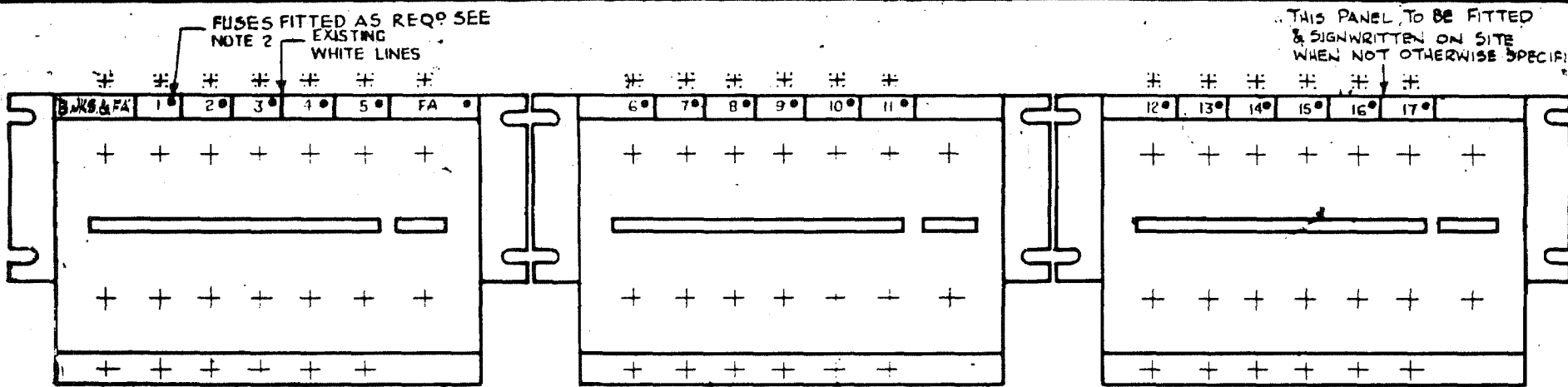


FIG. 2.

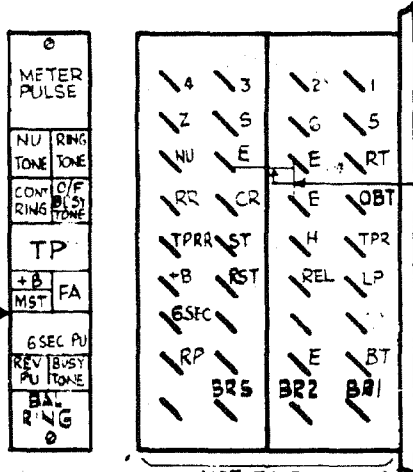
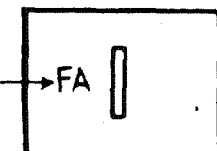
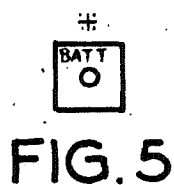
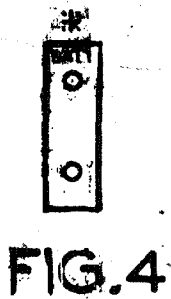


FIG. 7

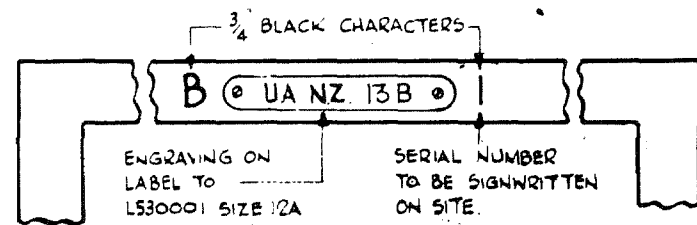


FIG. 3.

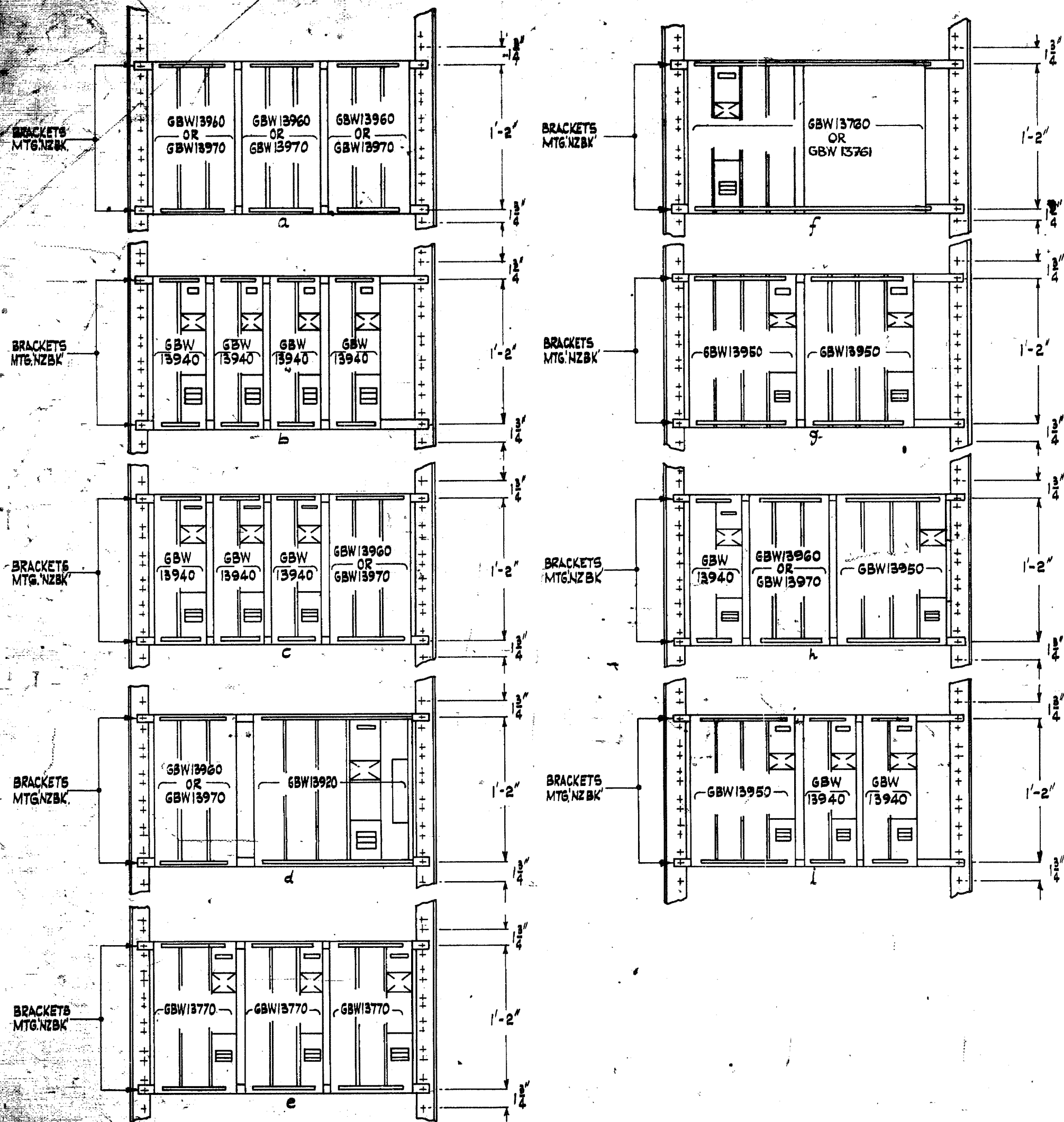
NOTES

- 2-1. SIGNWRITING FOR FIGS. 2 TO 7. BLACK SURFACES TO BE SIGNWRITTEN IN WHITE. ALL OTHER SURFACES TO BE SIGNWRITTEN IN BLACK. ALL CHARACTERS TO BE 1/8" EXCEPTING THOSE MARKED # WHICH SHALL BE 3/16".
- 2-2. THE INSTALLER SHALL ADD SPOT FILLINGS IN ACCORDANCE WITH THE FOLLOWING TABLE:  
 0.5A FUSE SPOT FILLING SHALL BE BLUE.  
 1.0A FUSE SPOT FILLING SHALL BE YELLOW.  
 1.5A FUSE SPOT FILLING SHALL BE RED.  
 2.0A FUSE SPOT SHALL REMAIN UNFILLED.  
 SPARE FUSE POSITION SHALL REMAIN UNFILLED.
- 2-3. RELAY SETS OCCUPY VERTICAL SPACES EQUIVALENT TO 4 HORIZONTAL MTGS.

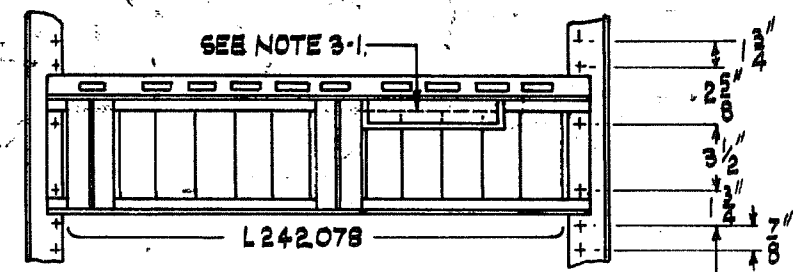
ISSUE	APPS
1 29. 4. 54	H.B.
2 CO-G710 FIG. 7. MODIFIED 28-7-54	R.G. J.S.N. H.P.B.
3 NO. 7278 FIG. 2. 7. A. NOTE REVISED. 28-9-54	H.P.B.
4 FIG. 7. REVISED. 28-9-55	H.P.B.
5 FIG. 7. REVISED 28-11-55	H.P.B.
6 CO. 2569 FIG. 7. REVISED TO DELETE PIP-PIP PULSE SUPPLY TAGGING RE-TOUCHED. 9-8-62	R.G. J.S.N. H.P.B.

**TYPICAL EQUIPMENT  
JUNCTION GROUP RACK  
UNIT AUTO. N.Z. 13B**

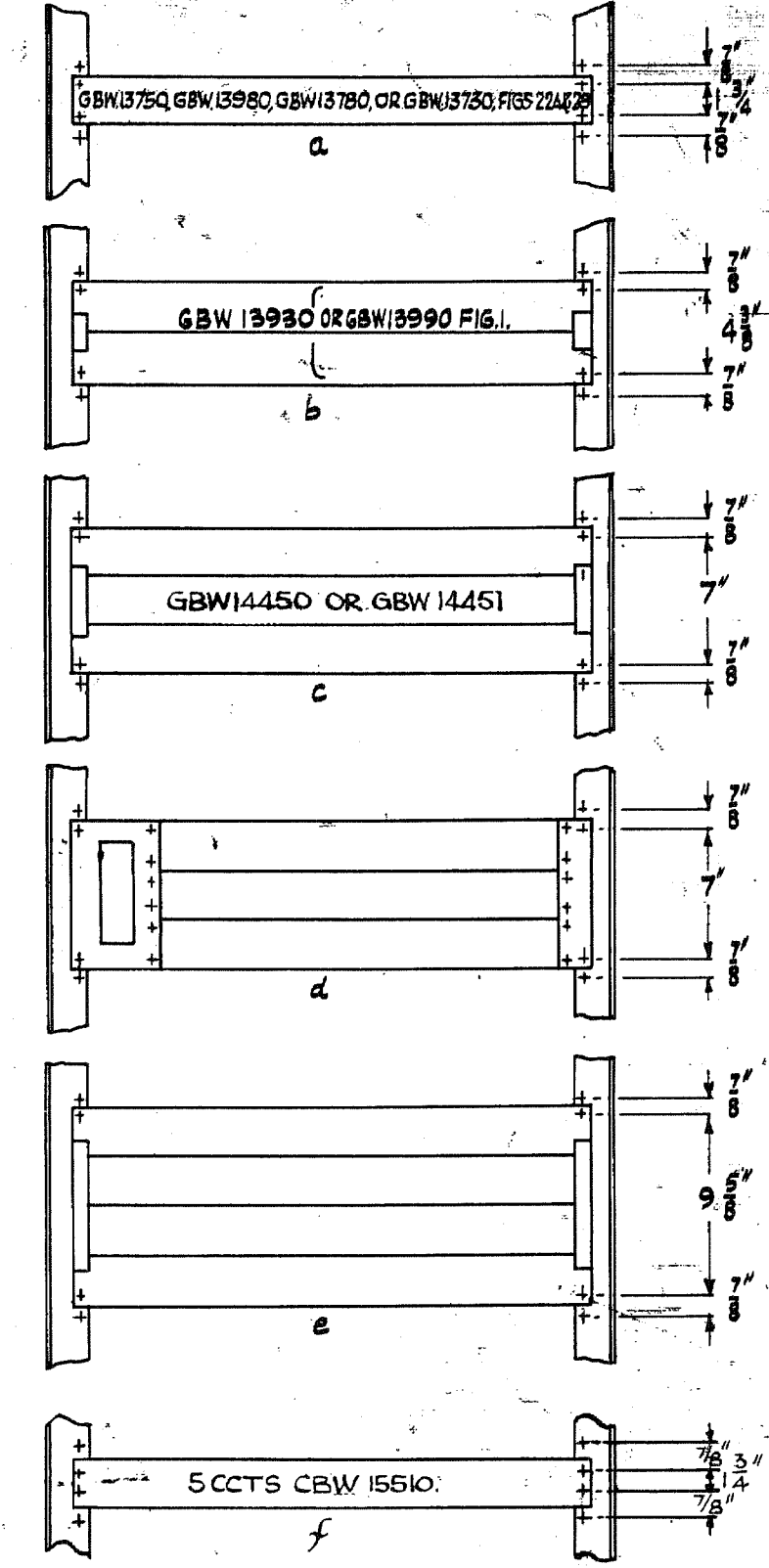
DRAWN <i>W. J. 27/1/54</i>	ENGINEER	APPROVED	DRAFT ENG.
TRACED			
CHECKED <i>W. J.</i>			
494064 BHT. 2	AUTOMATIC TELEPHONE ELECTRIC CO. LTD LIVERPOOL		G



**FIG. A.**  
 JUNCTION GROUPS (STRIP MTD VERTICAL TYPE)  
 SHOWING POSSIBLE COMBINATIONS OBTAINABLE  
 ON SHELF ANGLES ALSO VERTICAL MOUNTING  
 SPACE REQUIRED



**FIG. B.**  
 JUNCTION HUNTER UNISEL<sup>®</sup> SHELF.  
 2 GROUPS OF 5 CCTS. GBW13990 FIG. 2.



**FIG. C.**  
 JUNCTION GROUPS (STRIP MTD. HORIZ. TYPE)  
 SHOWING NUMBER OF PLATES REQUIRED  
 FOR EACH TYPE OF CCT. EMPLOYED.

**NOTES:-**  
 3-1 POSN IN WHICH FRAME NOTICE N°20  
 (L540196) & BRACKET MTG. DD (L540283-4) FITTED.  
 3-2 WHEN RACK IS TO BE EQUIPPED AS AN 'M' UNIT  
 SEE 'M' UNIT EQUIPMENT DRAWING.

ENGR'S RECORD  
 19 SEP 1954

**TYPICAL EQUIPMENT  
 JUNCTION GROUP RACK  
 UNIT AUTO NZ. 13B.**

DRAWN A.S.	ENGINERS	DATE	W.E.F.
TRACED 19-1-54	J.S.N. 2/1/54	REVISED	H.W.B.
CHECKED J.C.J.			

494064 5H.3. AUTOMATIC TELEPHONE & ELECTRIC CO. LTD. 1123 FOLK J

ISSUE	NO.	DATE	BY
1	29-4-54		
2	CO. 8018 FIGS. B & C REVISED		
3	23-6-54		
4	CO. 7881 METHOD OF MOUNTING RELAY PLATES REVISED. REDRAWN	29-9-54	
5	CO. 7864 FIG. A. REVISED. NOTE 3-2 WAS NOT SHOWN	2-11-54	
6	CO. 1838 FIG. C. REVISED	7-9-55	
7	CO. 3323 IN FIGS. A & C REF. TO (GBW1376) & (GBW14451) WERE NOT SHOWN	18-11-55	
8	CO. 4323 RELAY PLATE 'C' WAS NOT SHOWN IN FIG. C.	13-5-59	

ISSUE		APR
1.	31. 1. 61	HC 9
REF.		
FU.FD.		

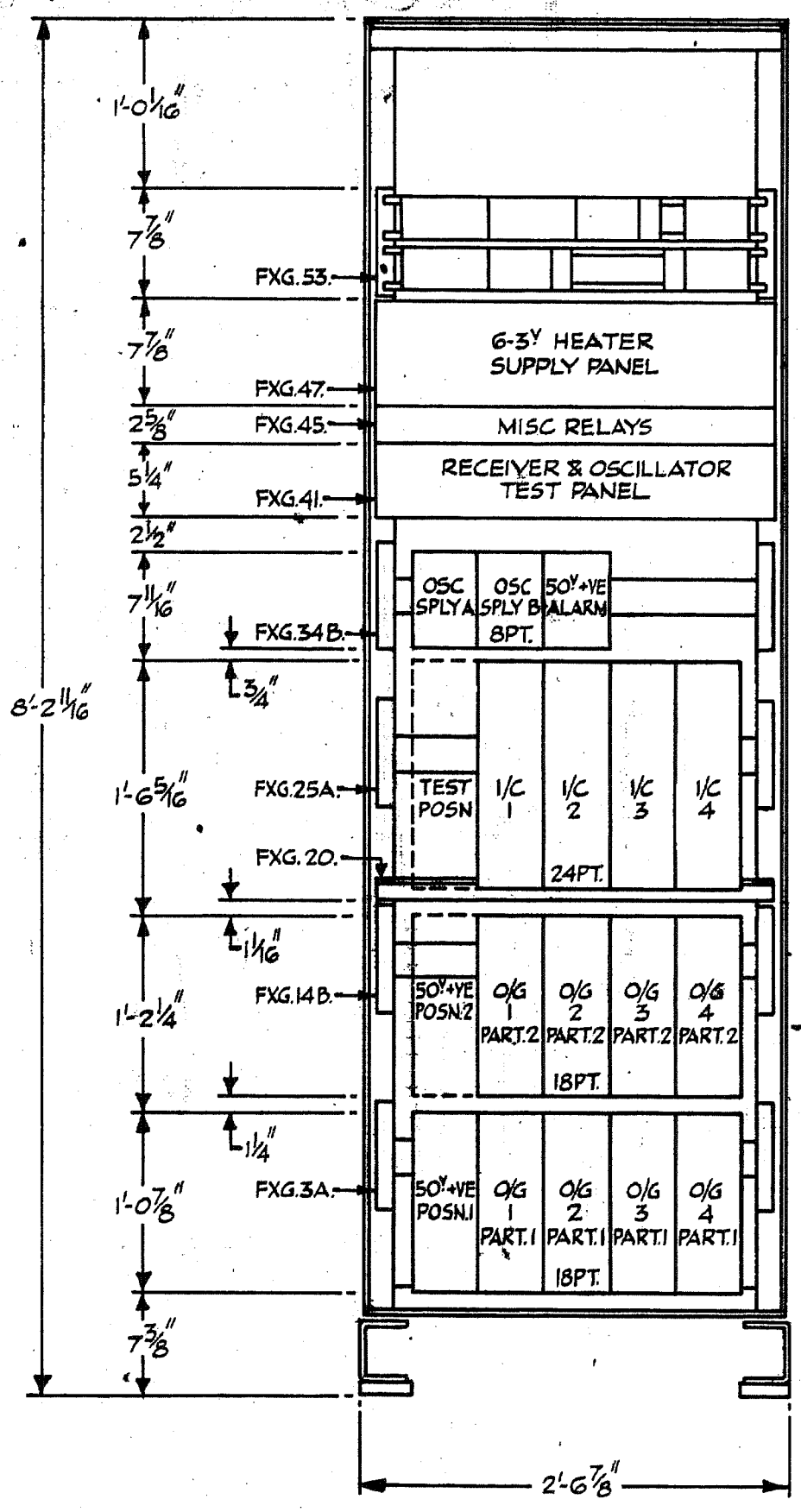


FIG. 8.

CAPACITY:- 4 BOTHWAY IVF CIRCUITS, RECR & OSC'R TEST PANEL, 6-3V HEATER SUPPLY, 50V +VE. SUPPLY & ALARM 2280 ~ OSC. MISC. CCTS.

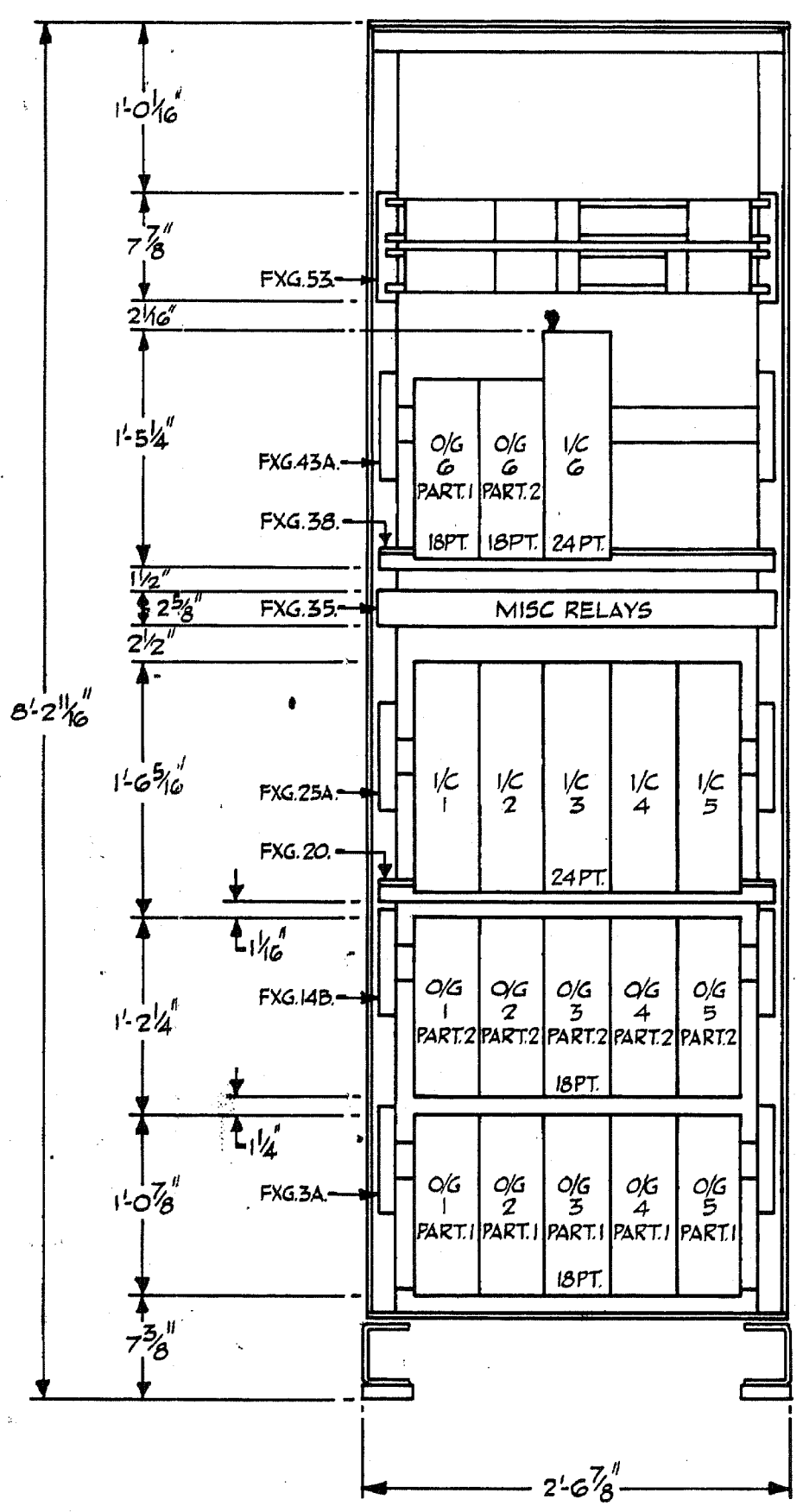


FIG. 9.

CAPACITY:- 6 BOTHWAY IVF CIRCUITS & MISC. EQUIPMENT.

ENGR'S RECORD  
9 SEP 1960

**TYPICAL EQUIPMENT JUNCTION GROUP RACK UNIT AUTO. N.Z. 13 B**

DRAWN A.J.S.	ENGINEERS	APPROVED	30/1/61
TRACED		DRFT ENG	
CHECKED L.M.		30/1/61	

494064 SH.4 AUTOMATIC TELEPHONE & ELECTRIC CO. LTD LIVERPOOL G

ISSUE			APP
1.	31.	1. 61	HC 9

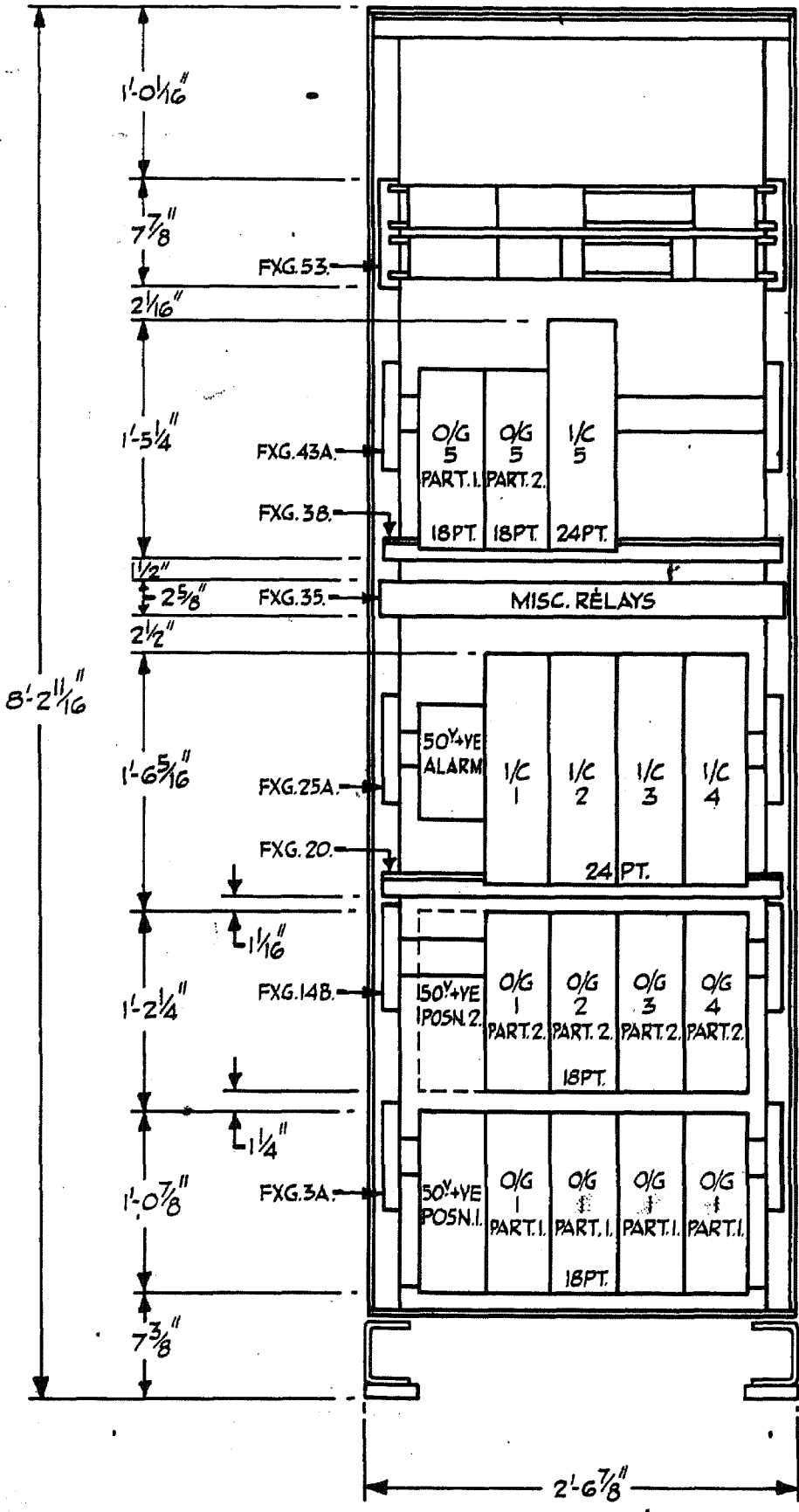


FIG. IO.

CAPACITY:- 5 BOTHWAY IVF CIRCUITS, 50<sup>Y</sup>+VE SUPPLY & ALARM MISC. EQUIPT

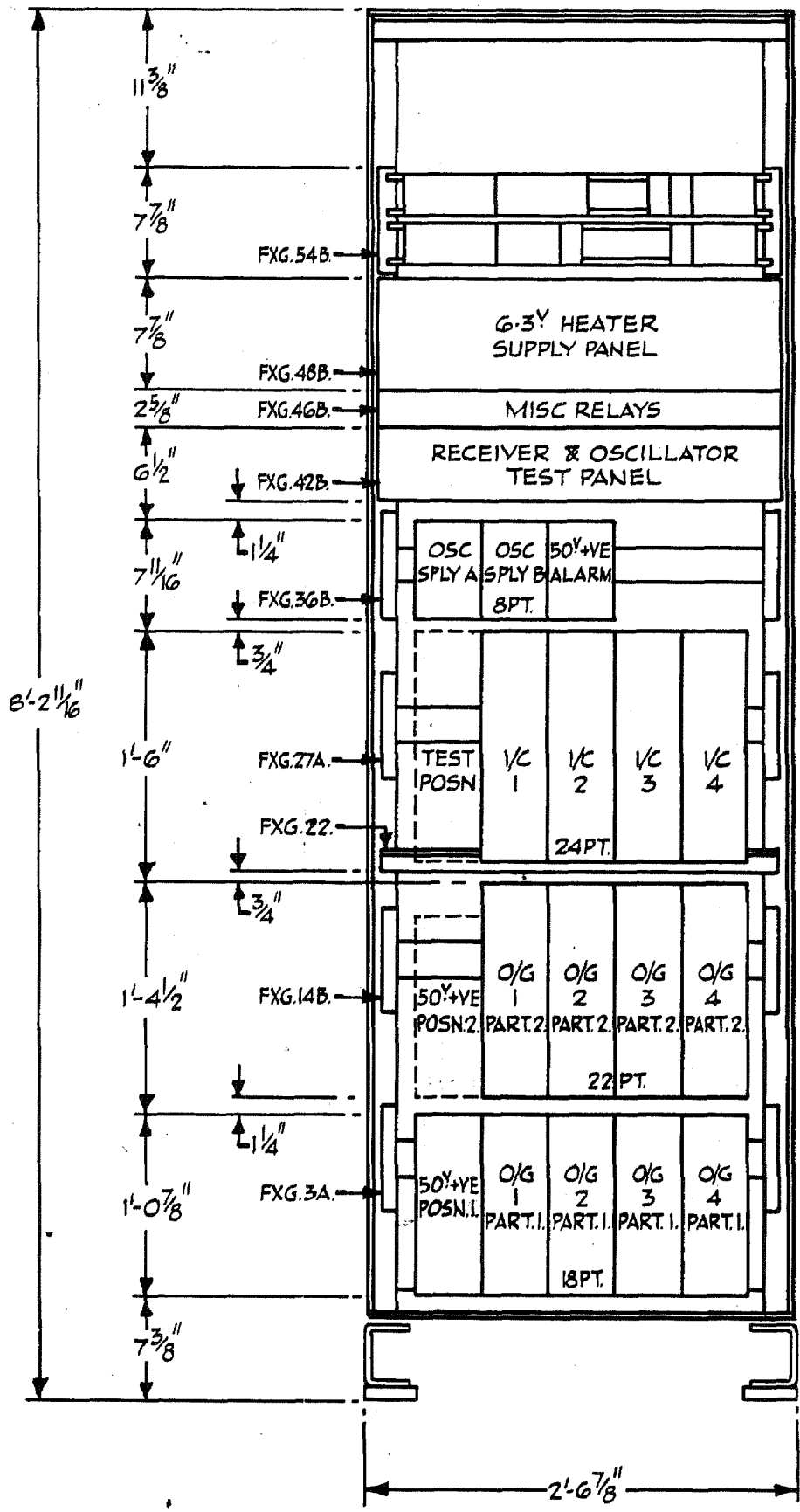


FIG. II.

CAPACITY:- 4 BOTHWAY IVF CIRCUITS.  
 1 1/C + 1 O/G + 3 B/W IVF CIRCUITS.  
 2 1/C + 2 O/G + 2 B/W IVF CIRCUITS.  
 3 1/C + 3 O/G + 1 B/W IVF CIRCUITS.  
 4 1/C + 4 O/G UNIDIRECTIONAL IVF CIRCUITS.  
 RECR & OSC'R TEST PANEL, G-3<sup>Y</sup> HEATER SUPPLY, 50<sup>Y</sup>+VE SUPPLY & ALARM 2280 ~ OSC. MISC. CIRCUITS.

ENGR'S RECORD  
 4-9 SEP 1969

**TYPICAL EQUIPMENT  
 JUNCTION GROUP RACK  
 UNIT AUTO. N.Z. 13B**

DRAWN A.J.S.	ENGINEERS	APPROVED	DRY ENG
TRACED			
CHECKED L.M.			

30-1-61

**494064 SH.5** AUTOMATIC TELEPHONE & ELECTRIC CO. LTD LIVERPOOL **G**

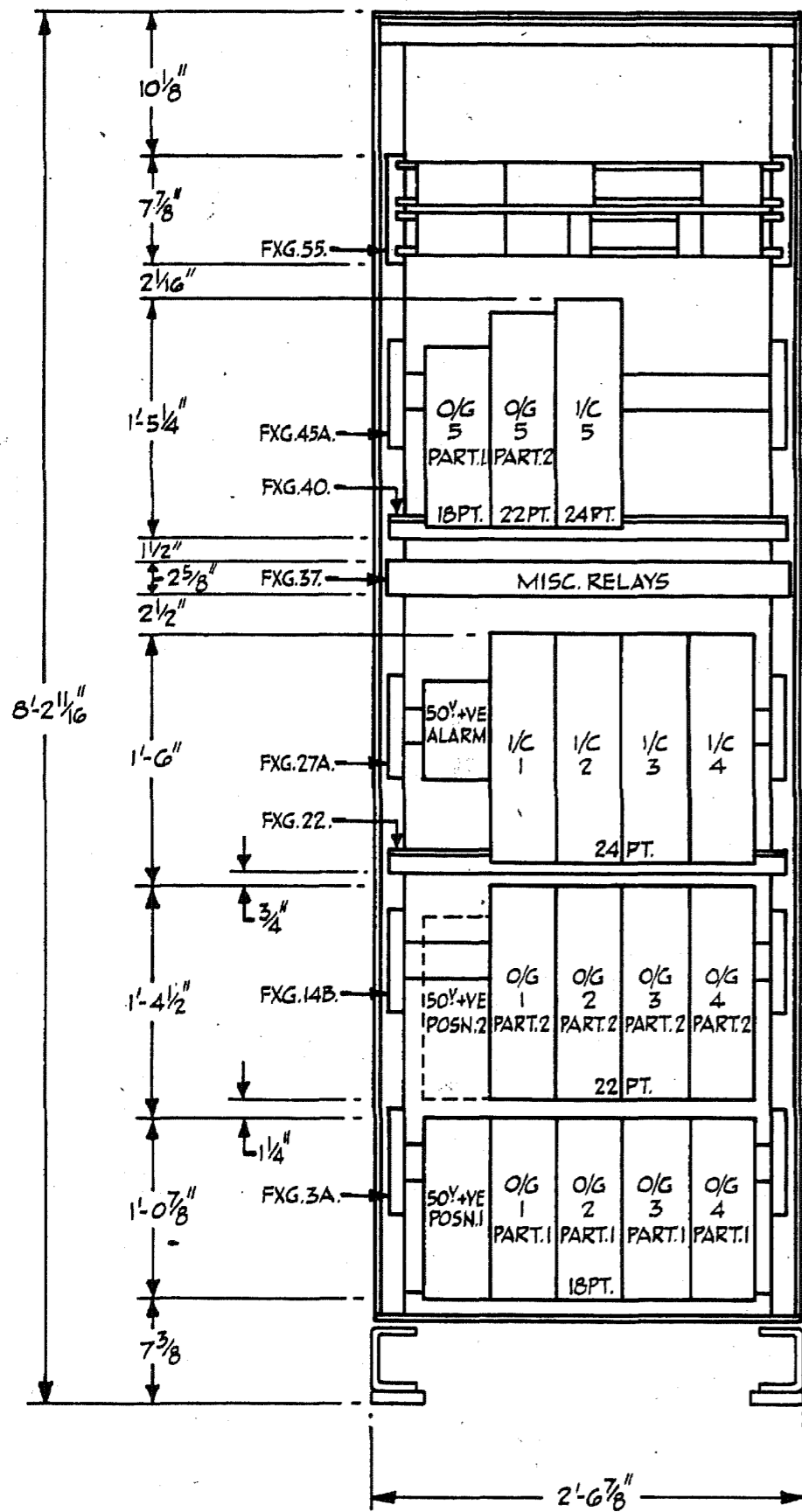


FIG.12.

CAPACITY:- 5 1/C & 5 O/G UNIDIRECTIONAL IVF CIRCUITS.  
50V+VE. SUPPLY & ALARM MISC. CIRCUITS.

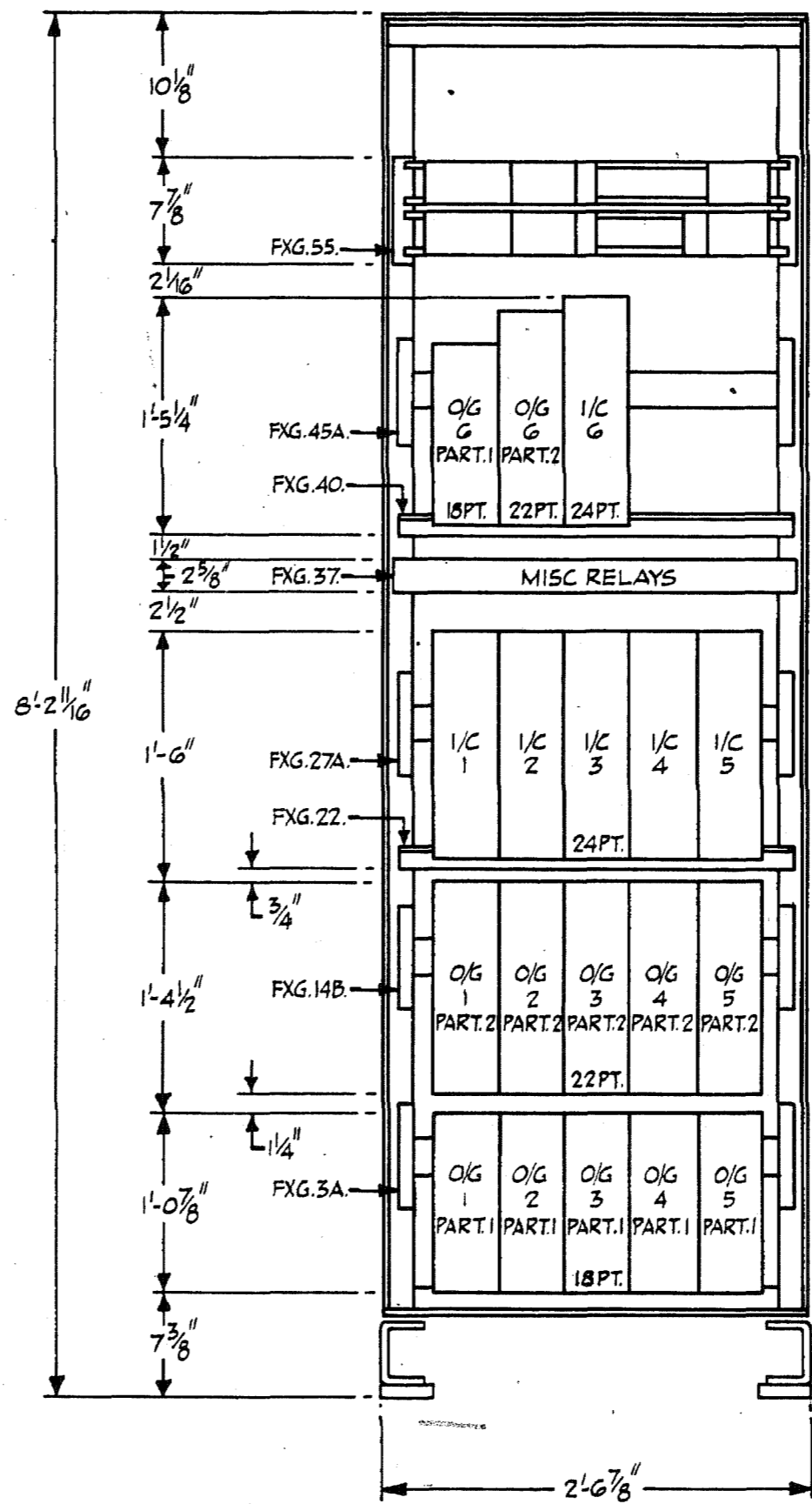


FIG.13.

CAPACITY:- 6 1/C & 6 O/G UNIDIRECTIONAL IVF CIRCUITS & MISC. EQUIPMENT.

ENGR'S RECORD  
9 SEP 1960

**TYPICAL EQUIPMENT  
JUNCTION GROUP RACK  
UNIT AUTO. N.Z.13B**

DRAWN A.J.S.	ENGINEERS	APPROVED	DRFT. ENG.	30/1/61
TRACED				
CHECKED L.M.				
494064 SH.6		AUTOMATIC TELEPHONE & ELECTRIC CO. LTD LIVERPOOL		