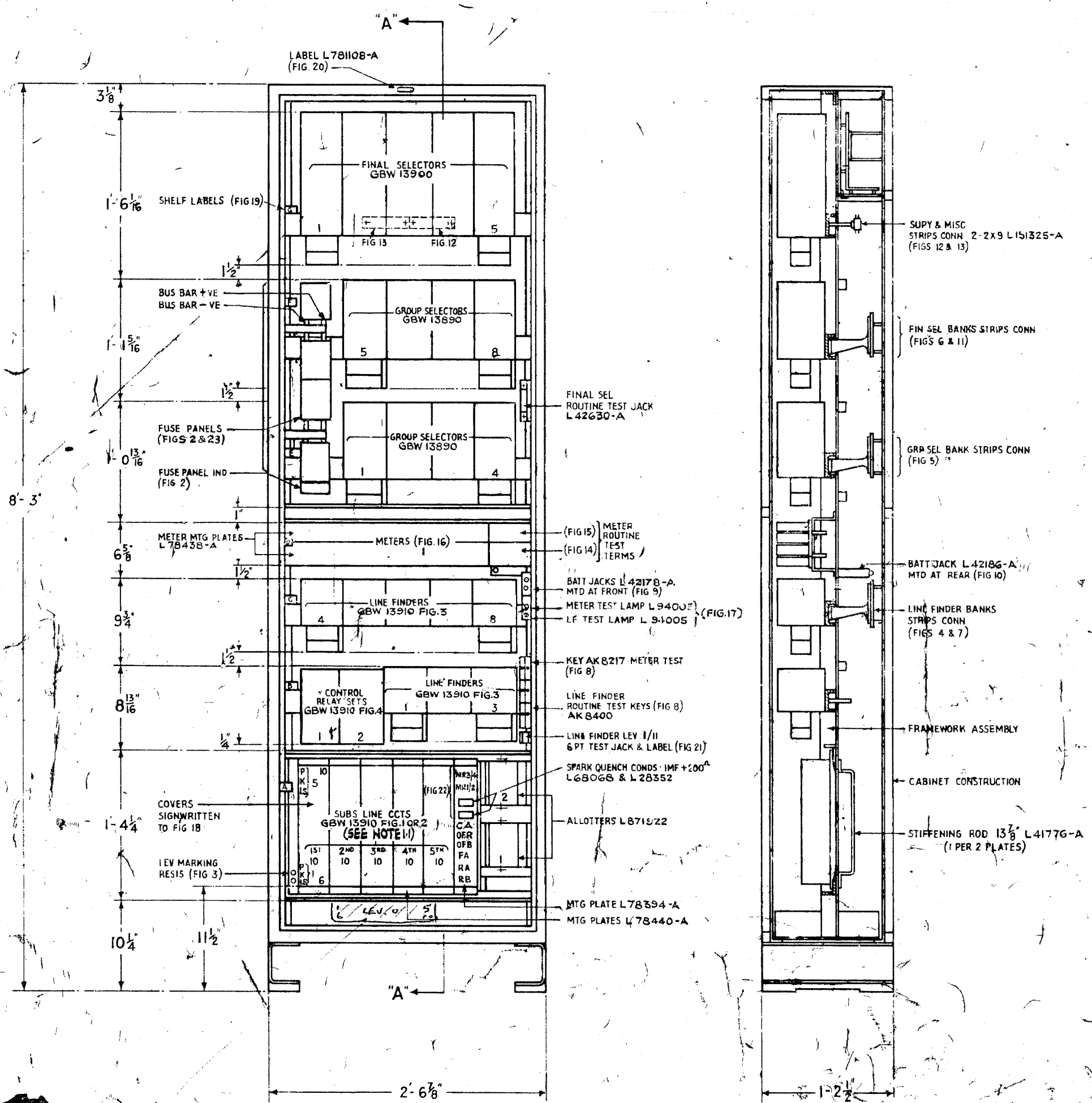


ISSUE	APP
1. 13. 1. 54	H.A.B.
2. CO. 1932 FIG. 1 SHELF A. REL. CA WAS NOT SHOWN. 26.9.55	H.P.B.
3. CO. 2910 IN FIG. 1. FUSE PANEL POSN'S REVISED. FIG. 1 SHELF A REL. 'GFA' WAS OFF. 2.12.55	H.P.B.
4. CO. 4572 NOTE 1-1 WAS NOT SHOWN. 8.2.56	H.P.B.
5. CO. 4970 DESIGN OF RELAY OFFR WAS OFF. 27.2.56	H.P.B.



NOTES:
 1-1 ON PARTIALLY EQUIPPED UNITS FITTED W/ 40 SUBS LINE CIRCUITS THE RELAY GROUPS SHALL BE MOUNTED IN 1ST, 2ND, 3RD & 5TH POSITIONS.

REF: FRAMEWORK ASSEMBLY 424506

FU: FO. 2/80614

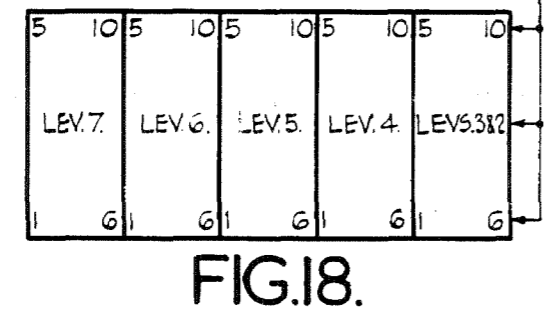
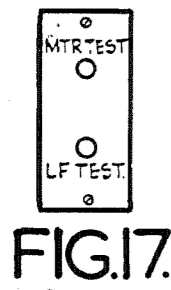
**TYPICAL EQUIPMENT
 LINE EQUIPT RACK A
 UNIT AUTO N.Z.13.**

DRAWN A.D.B. 25.10.55	ENGINEERS	APPROVED	DRAFT ENG
TRACED			
CHECKED G.W. 3/11/55			

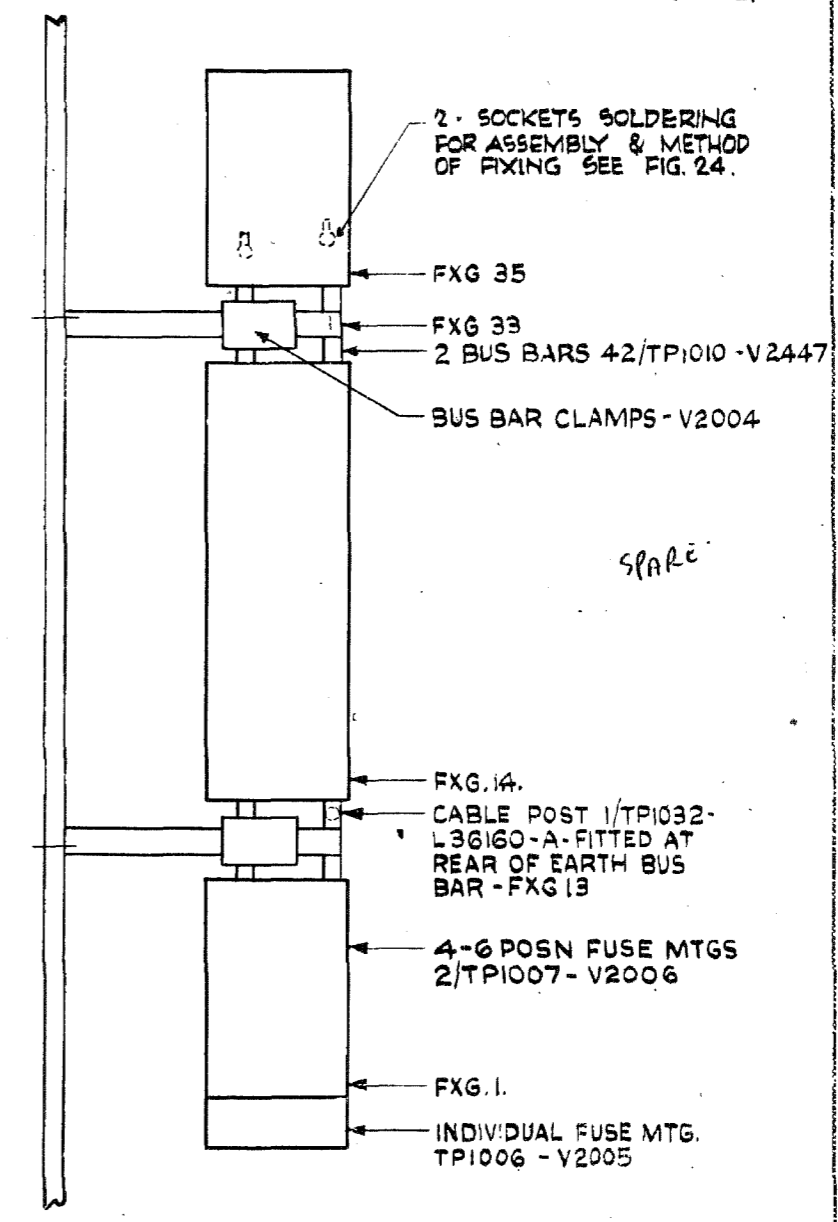
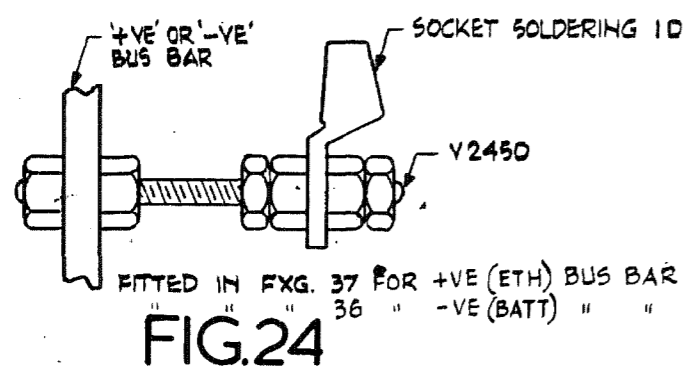
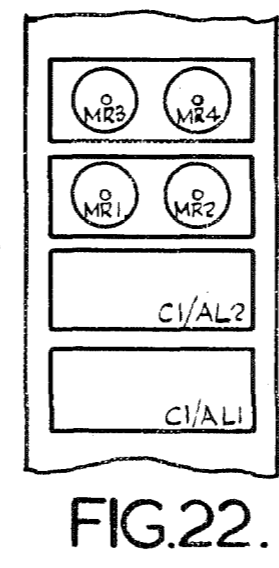
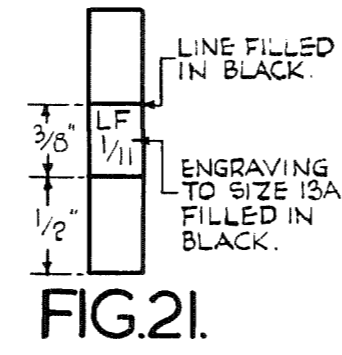
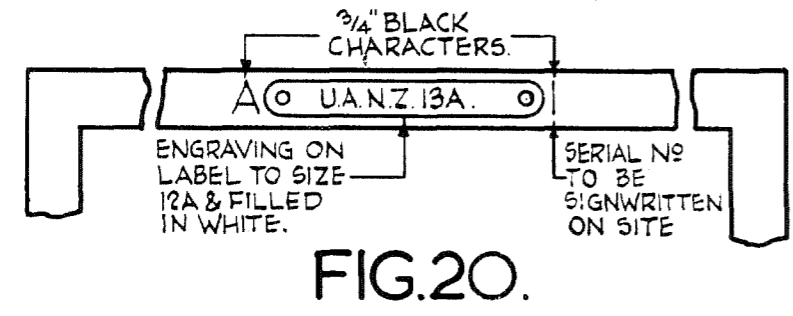
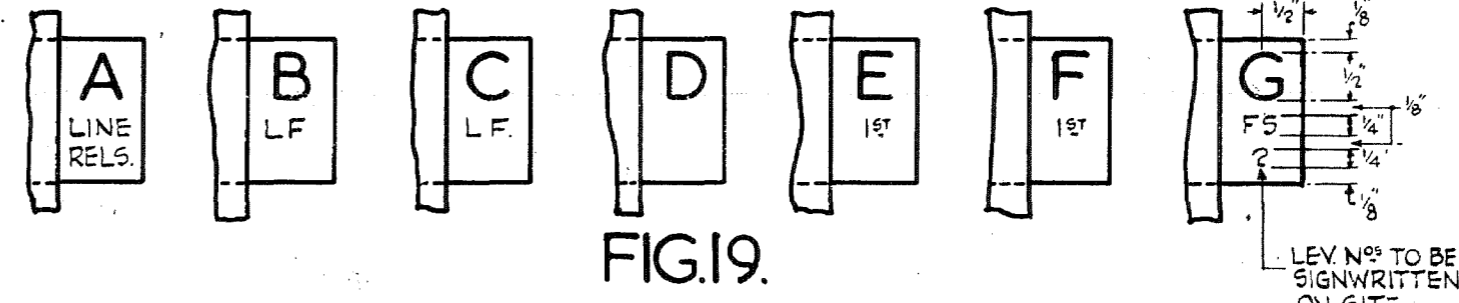
494063 SH-1-5 AUTOMATIC TELEPHONE & ELECTRIC CO LTD LIVERPOOL

Refer to 10 L/C for 'M' unit ref IS 1130. 2.11.0

FIG. 1



1/2" BLACK CHARACTERS ON REL. PLATE COVERS.



ISSUE	APP
1. 13. 1. 54	JGB
2. C.O. 2910 FIGS 23 & 24 WERE NOT SHOWN.	JGB
2 - 12 - 55	MRB
3. C.O. 7796 SOCKET SOLDERING ID WAS 3D IN FIG.24	ACB
27-10-61	MRB

REF:
 FILE NO: - 2/806141.

**TYPICAL EQUIPMENT
 LINE EQUIP! RACK "A"
 UNIT AUTO N.Z.13.**

DRAWN KH	ENGINEERS	APPROVED	ENG.
TRACED 27/10/53	JGB 12/1/54		
CHECKED G.W. 3/11/53			

494063 SH.5-5 AUTOMATIC TELEPHONE ELECTRIC CO LTD LIVERPOOL