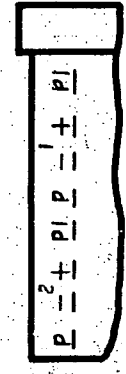
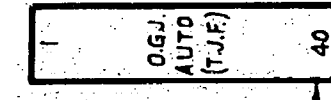
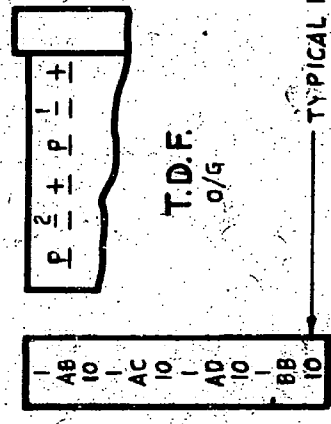
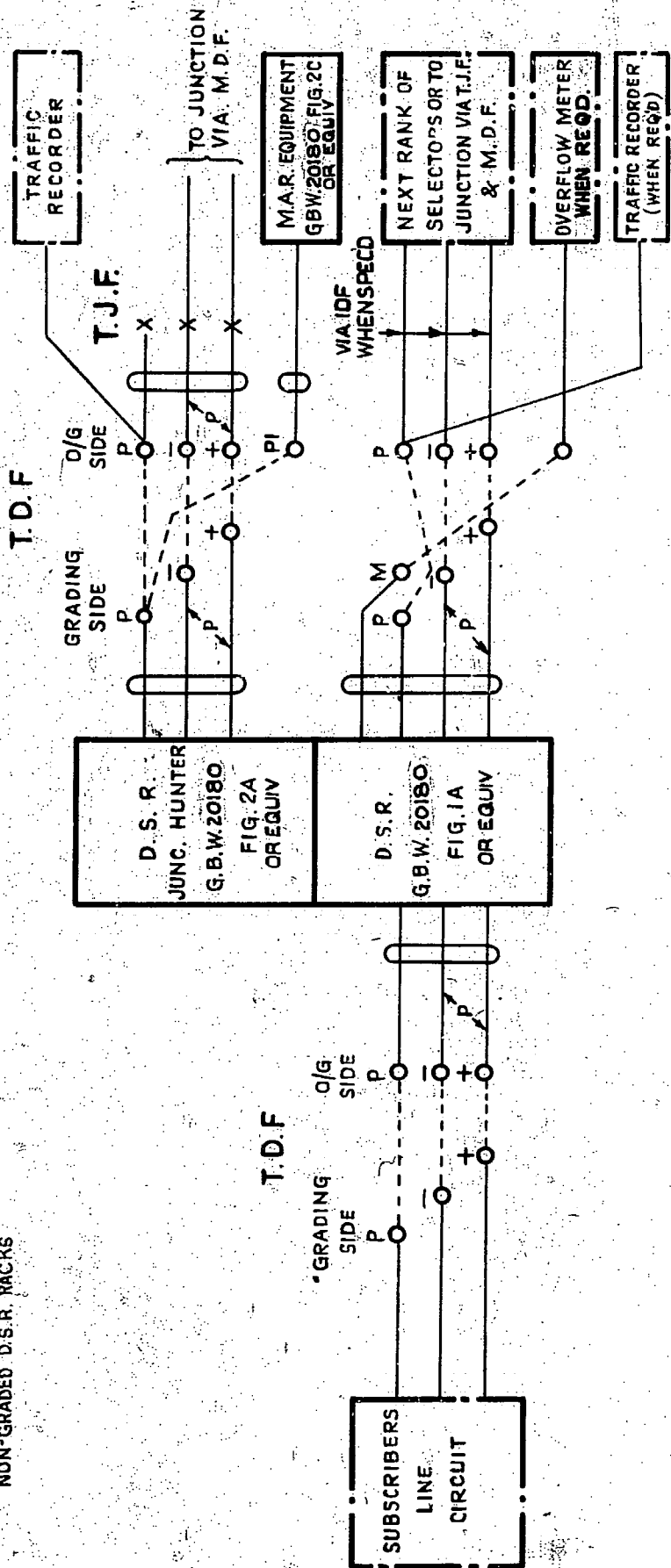


FIG. A

NON-GRADED D.S.R. RACKS



DISCRIMINATING SELECTOR REPEATER.
 REGULAR AND PARTY LINE.
 200 OUTLET. 2000 TYPE
 WITH OVERFLOW ROUTEING FACILITY

WAS GBX 10420/1/2/3/4 MOD B (2499)

ISSUE DATE APPD
 9-7-73 B.5-H.

AMENDMENT PARTICULARS

E

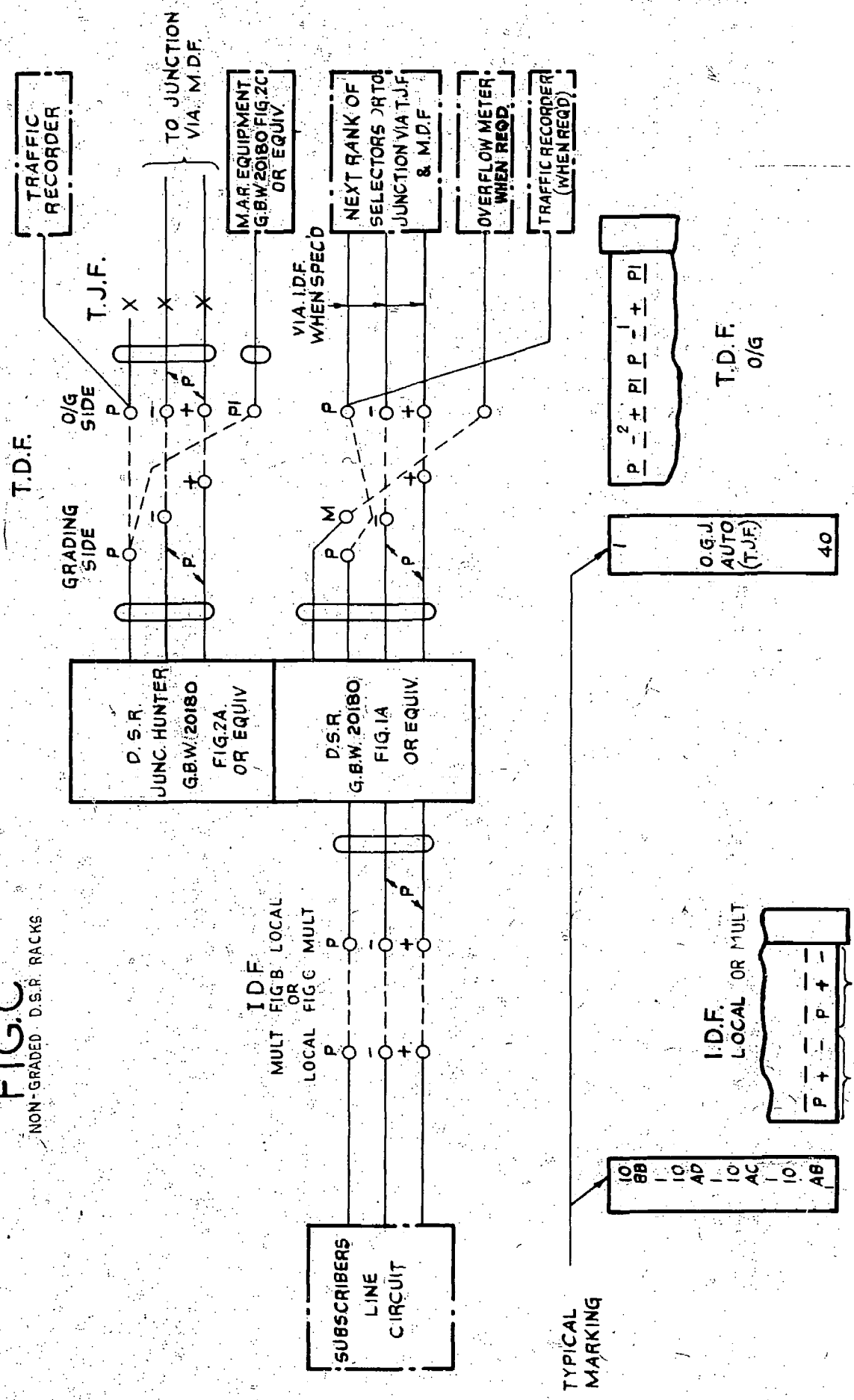
N.Z.P.O.

DRAWN CHECKED WRITING

GBX 20180 20183
 20181 20184
 20182

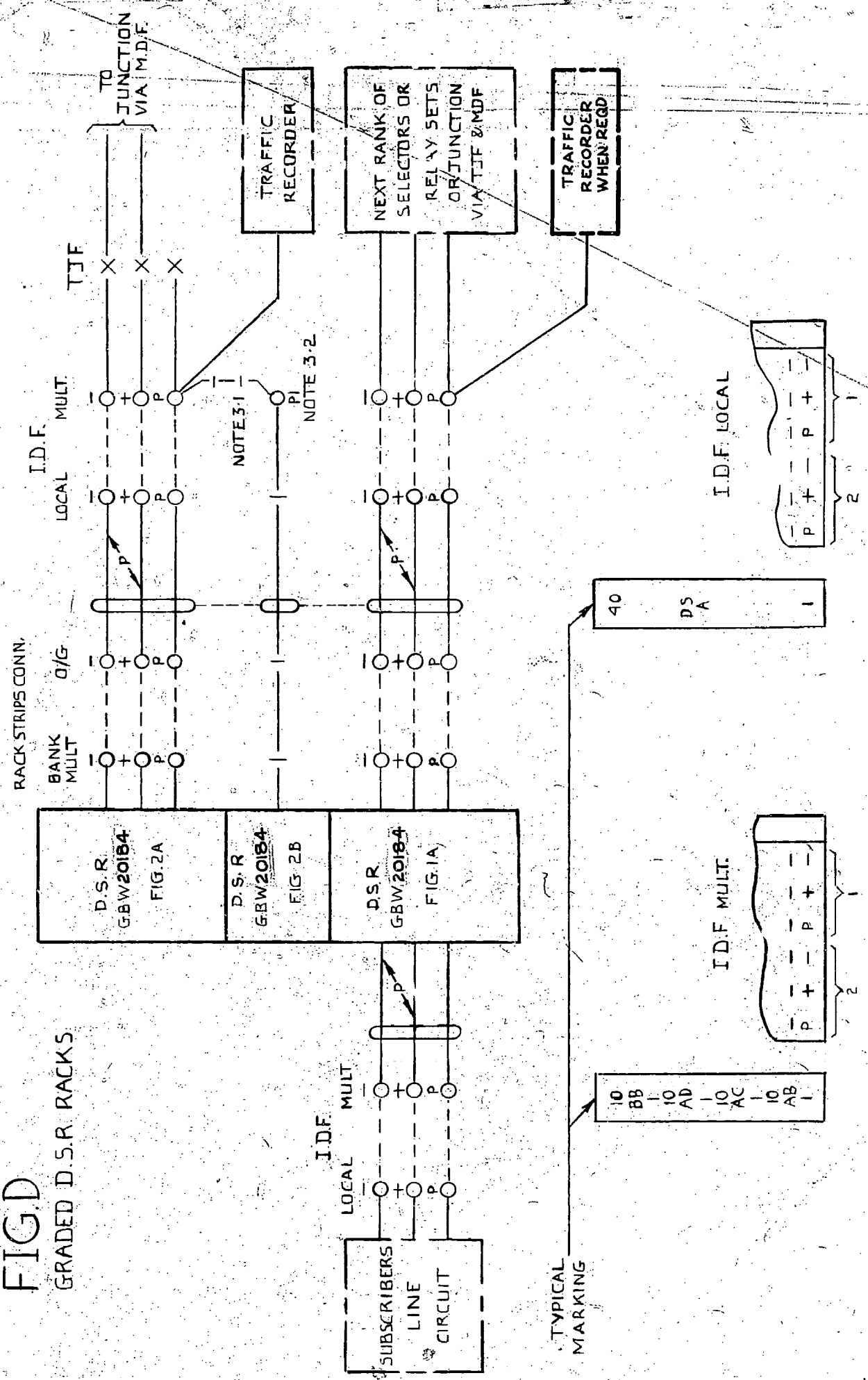
SHEET 4

FIG.B. NOT TO BE USED FOR NEW EXCHANGES.
FIG.C
 NON-GRADED D.S.R. RACKS



				DISCRIMINATING SELECTOR REPEATER REGULAR AND PARTY LINE 200 OUTLET. 2000 TYPE WITH OVERFLOW ROUTING FACILITY	
WAS GBX 10420/1/2/3/4 MOD B (2499)		1	2-7-73	B.S.-H	
AMENDMENT PARTICULARS		ISSUE	DATE	APPD.	E
N.Z.P.O.	DRAWN	CHECKED	WIRING	CIRCUIT	GBX 20180 20183 20181 20184 20182
46A/R/CCT					SHEET 2-4

FIGD
GRADED D.S.R. RACKS



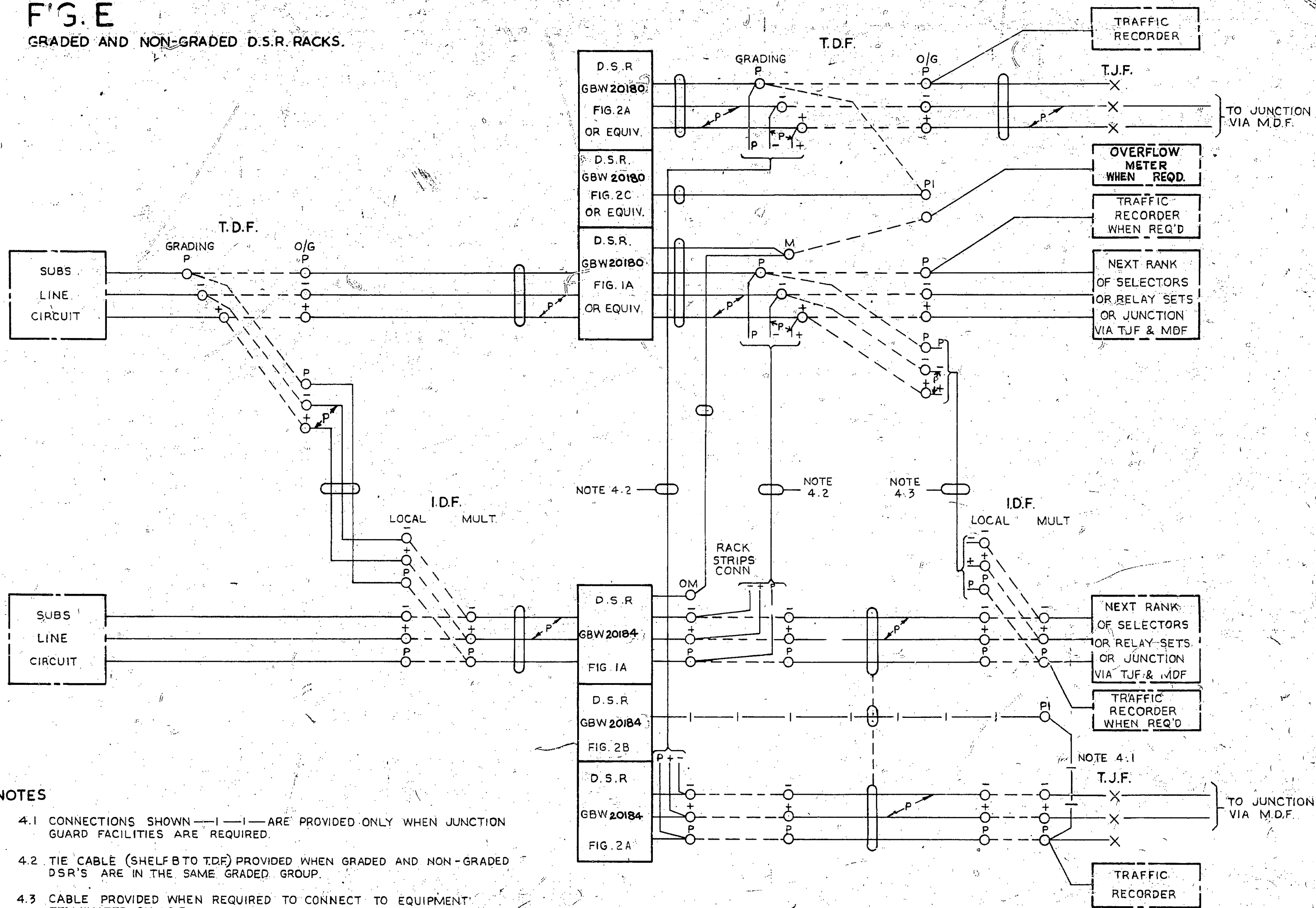
NOTES:

- 3-1 CONNECTIONS SHOWN — 1 — ARE PROVIDED ONLY WHEN JUNCTION GUARD FACILITIES ARE REQUIRED.
- 3-2 FOR MARKING OF THIS BLOCK SEE GBX 11070 FIG. J OR EQUIVALENT.

				DISCRIMINATING SELECTOR REPEATER REGULAR AND PARTY LINE 200 OUTLET. 2000 TYPE WITH OVERFLOW ROUTEING FACILITY			
WAS GBX 10420 1/1/2/3/4 MOD B (2499)				I	9-7-73	BS-H	
AMENDMENT PARTICULARS				ISSUE	DATE	APP'D	E
N.Z.P.O.		DRAWN	CHECKED	WIRING	CIRCUIT	GBX 20180 20181 20182	20183 20184
						SHEET 3 4	

FIG. E

GRADED AND NON-GRADED D.S.R. RACKS.



NOTES

- 4.1 CONNECTIONS SHOWN — | — | — ARE PROVIDED ONLY WHEN JUNCTION GUARD FACILITIES ARE REQUIRED.
- 4.2 TIE CABLE (SHELF B TO T.D.F.) PROVIDED WHEN GRADED AND NON-GRADED D.S.R.'S ARE IN THE SAME GRADED GROUP.
- 4.3 CABLE PROVIDED WHEN REQUIRED TO CONNECT TO EQUIPMENT TERMINATED ON I.D.F.
- 4.4 I.D.F. & T.D.F. BLOCK LAYOUTS & MARKING AS ON SHEETS 1,2,&3 AS APPLICABLE.

				DISCRIMINATING SELECTOR REPEATER REGULAR AND PARTY LINE 200 OUTLET, 2000 TYPE WITH OVERFLOW ROUTING FACILITY			
WAS GBX 104-20/1/2/3/4 MOD B (2499)				1	2-7-73	B.S.H.	
AMENDMENT PARTICULARS				ISSUE DATE	APPD		
N.Z.P.O.		CHECKED	DRAWN	WIRING	CIRCUIT	GBX 20180 20183 20181 20184 20182	
						SHEET 4-4	