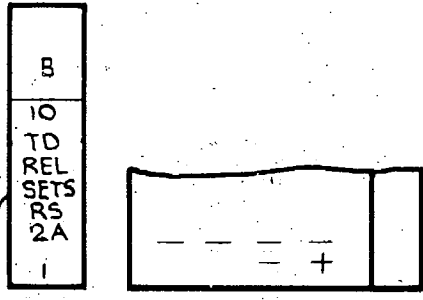
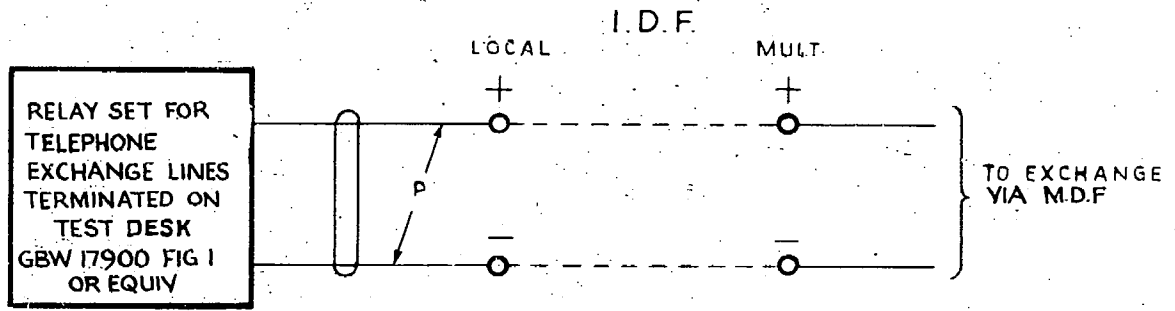
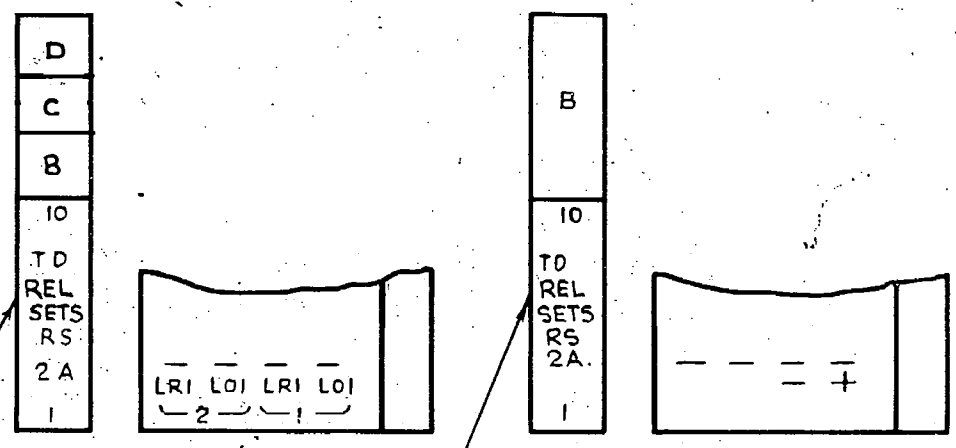
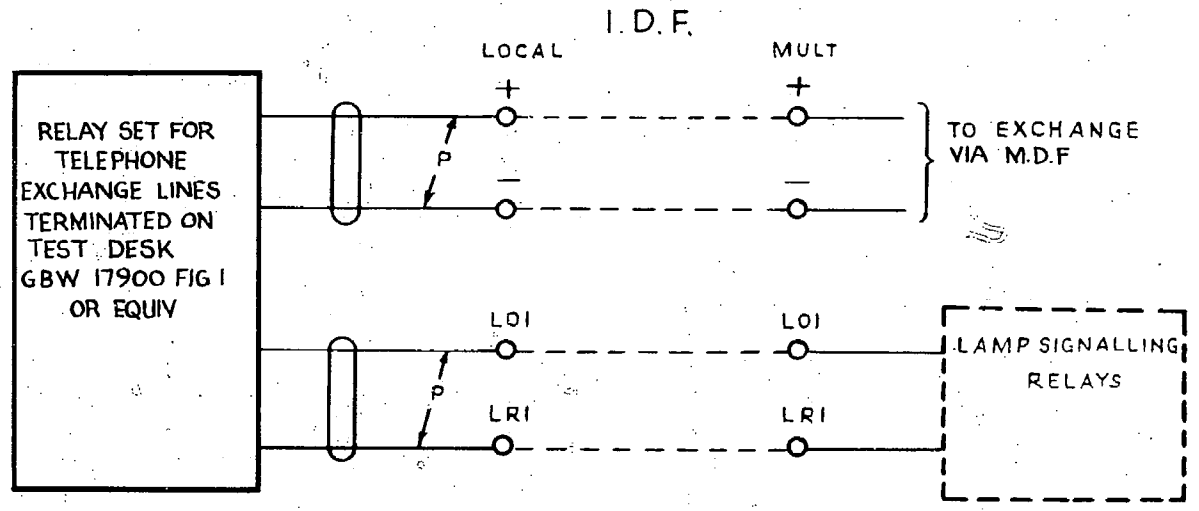


**FIG. A** WHEN THE NUMBER OF TEST DESK POSITIONS IS FIVE OR LESS



TYPICAL MARKING ON I.D.F.

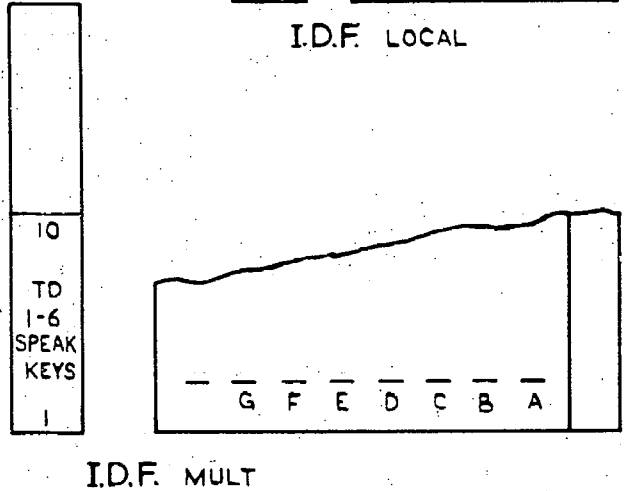
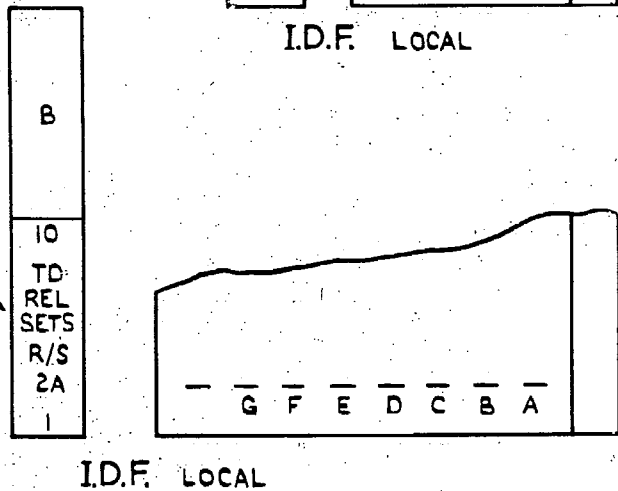
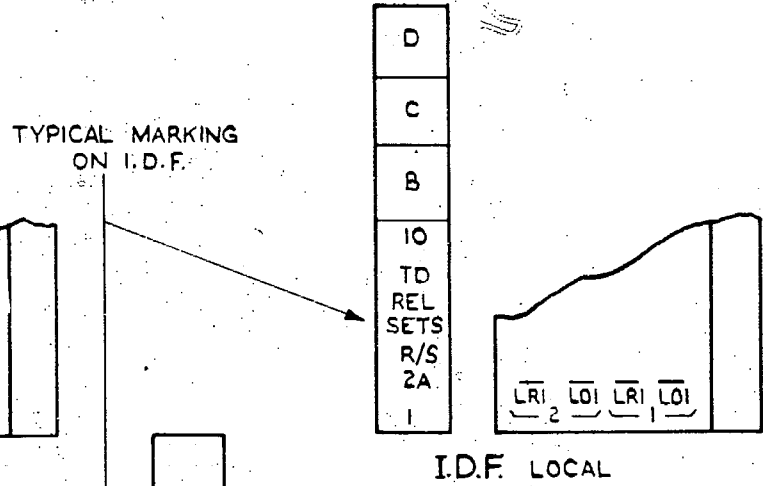
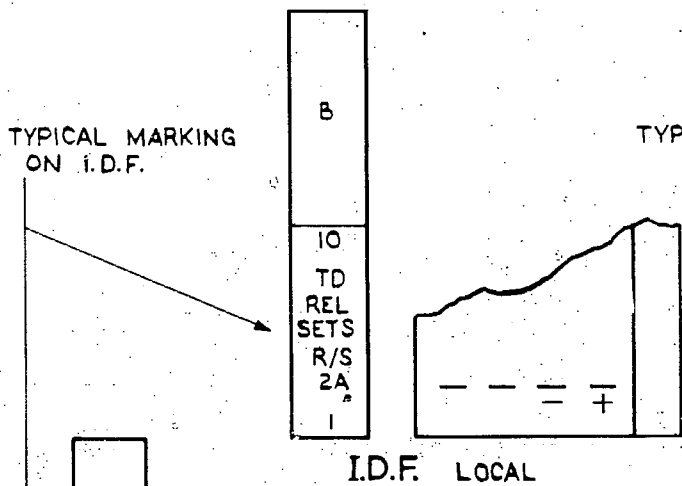
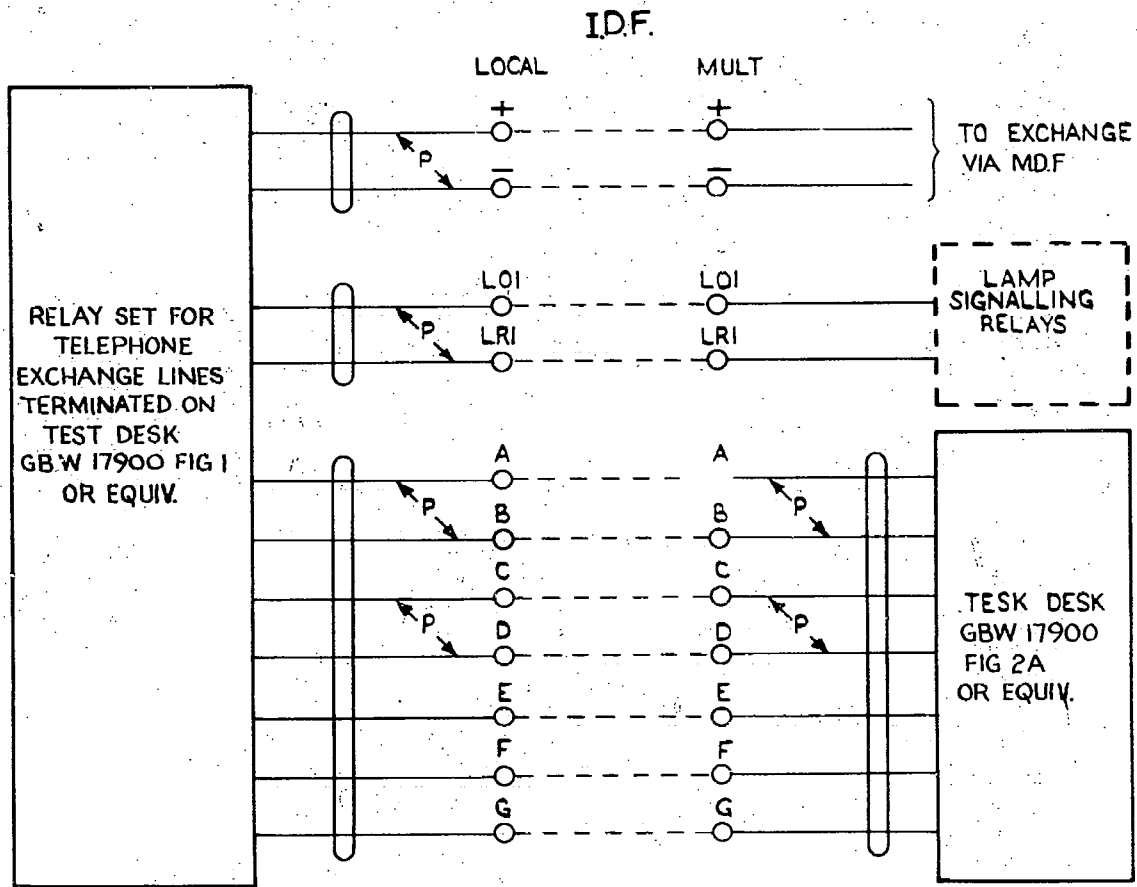
**FIG. B** WHEN THE NUMBER OF TEST POSITIONS EXCEEDS FIVE



TYPICAL MARKING ON I.D.F.

					AUTOMATIC TELEX SYSTEM RELAY SET FOR TELEPHONE EXCHANGE LINES TERMINATED ON THE TEST DESK 2000 TYPE					
					(86681)	1	8-4-59	<i>Am</i>		
AMENDMENT PARTICULARS					ISSUE	DATE	APPD	E		
N.Z.P.O.					DRAWN	CHECKED	WIRING	CIRCUIT		
					<b>GBX 17900</b>					

**FIG. C** WHEN THE NUMBER OF TEST POSITIONS EXCEEDS FIVE AND CIRCUITS ARE WIRED VIA I.D.F.



<b>AUTOMATIC TELEX SYSTEM RELAY SET FOR TELEPHONE EXCHANGE LINES TERMINATED ON THE TEST DESK 2000 TYPE</b>				
(8668)		1	8.4.68	<i>an</i>
AMENDMENT PARTICULARS	ISSUE	DATE	APPD	E
17900			GBX	
N.Z.P.O.	DRAWN	CHECKED	WIRING	CIRCUIT
				SHEE. 2-2