

FIG.A.

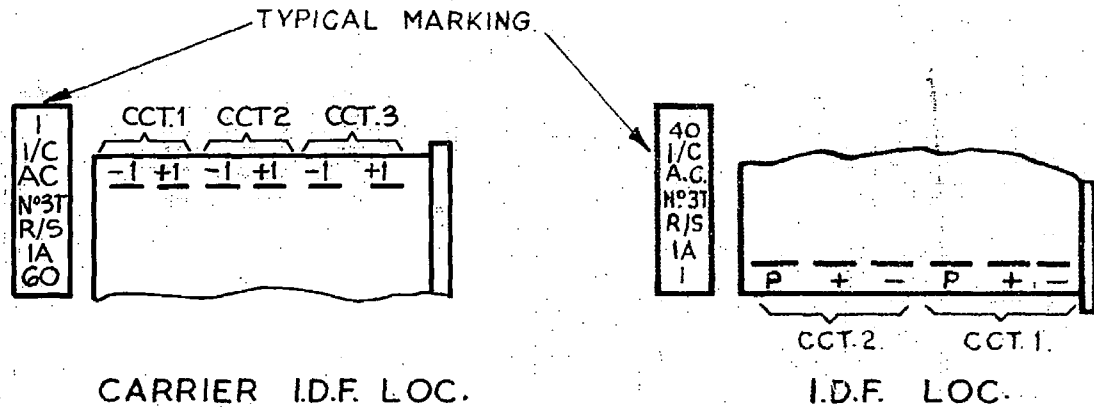
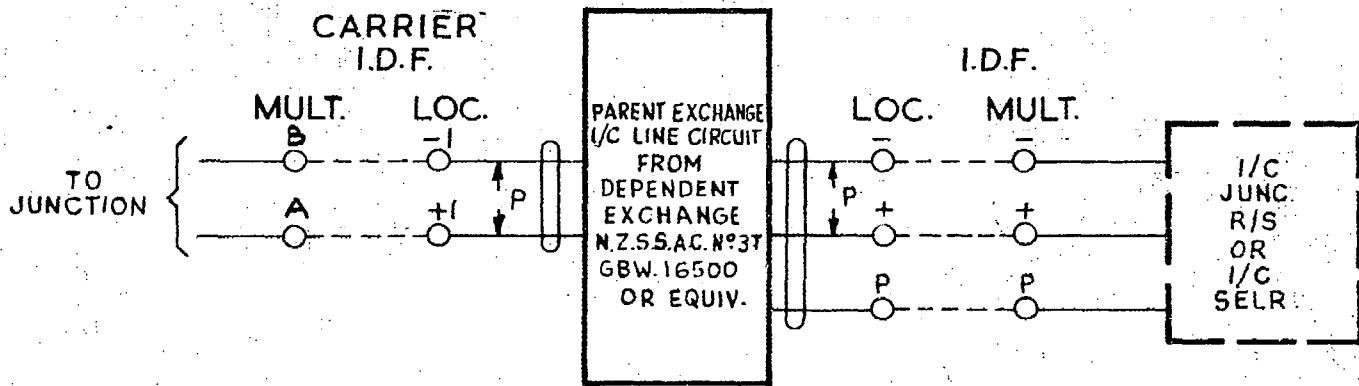


FIG.B.

CARRIER I.D.F. BLOCK VIEWS INVERTED (13726)				4	8-10-70	R.W.	PARENT EXCHANGE I/C LINE CIRCUIT FROM DEPENDENT EXCHANGE N.Z.S.S.AC. N° 3T.	GBX. 16500	SHEET 1-3
FIGS. A & B AMENDED TO CABLE THE -1 & +1 PAIR TO CARRIER I.D.F. LOCAL. (8736)				3	9-12-68	<i>[Signature]</i>			
FIG.A CCT. NUMBERING. FIG.B. BLOCK MARKING AMENDED. (58052)				2	2-12-66	D.I.B.			
				1					
AMENDMENT PARTICULARS				ISSUE	DATE	APP	REF. -	50V	S
N.Z.P.O.				DRAWN	CHECKED	WIRING	CIRCUIT		
						A.S.H.			

UNIT 'C'
I.D.F.

I.D.F.'S UNIT
TERMS AT
REAR OF SHELF.

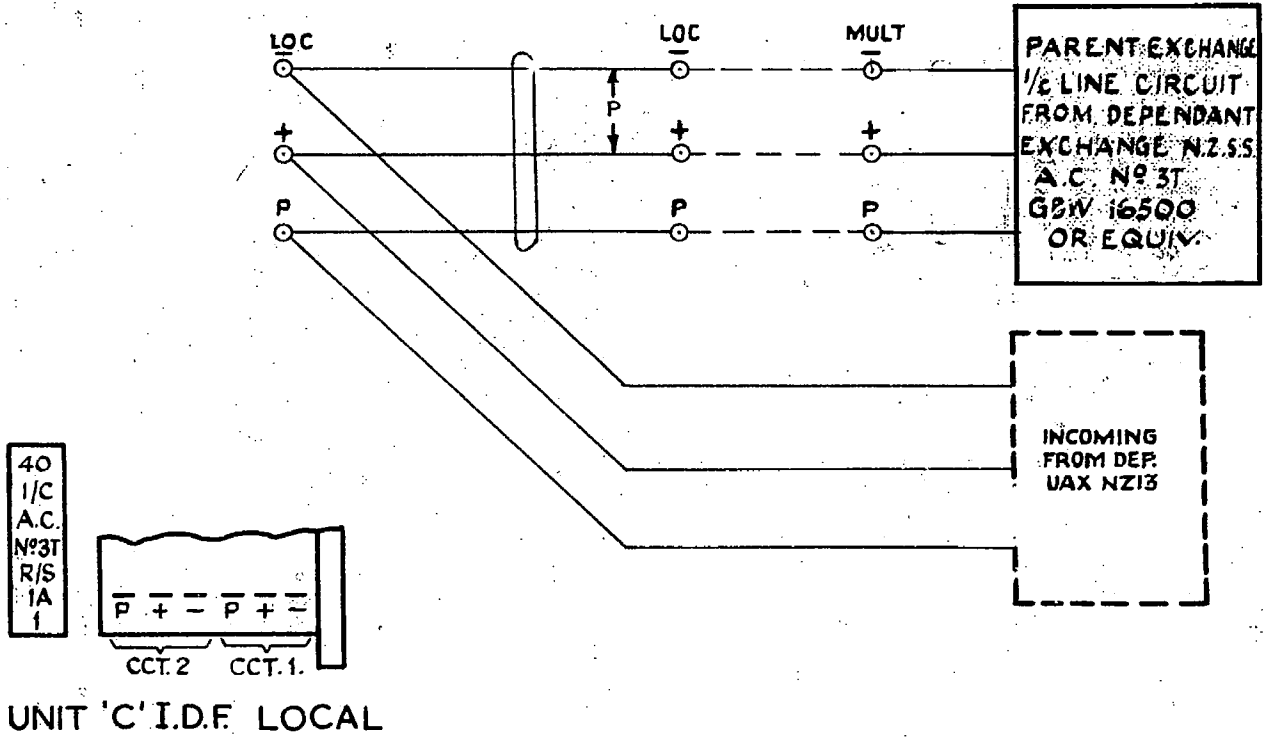


FIG. C. PARENT U.A.X. NZ 13 BOTHWAY WORKING FROM DEPENDENT U.A.X. NZ 13

UNIT 'C'
I.D.F.

I.D.F.'S UNIT
TERMS AT REAR
OF SHELF.

I.D.F.'S UNIT
TERMS AT REAR
OF SHELF.

UNIT 'C'
I.D.F.

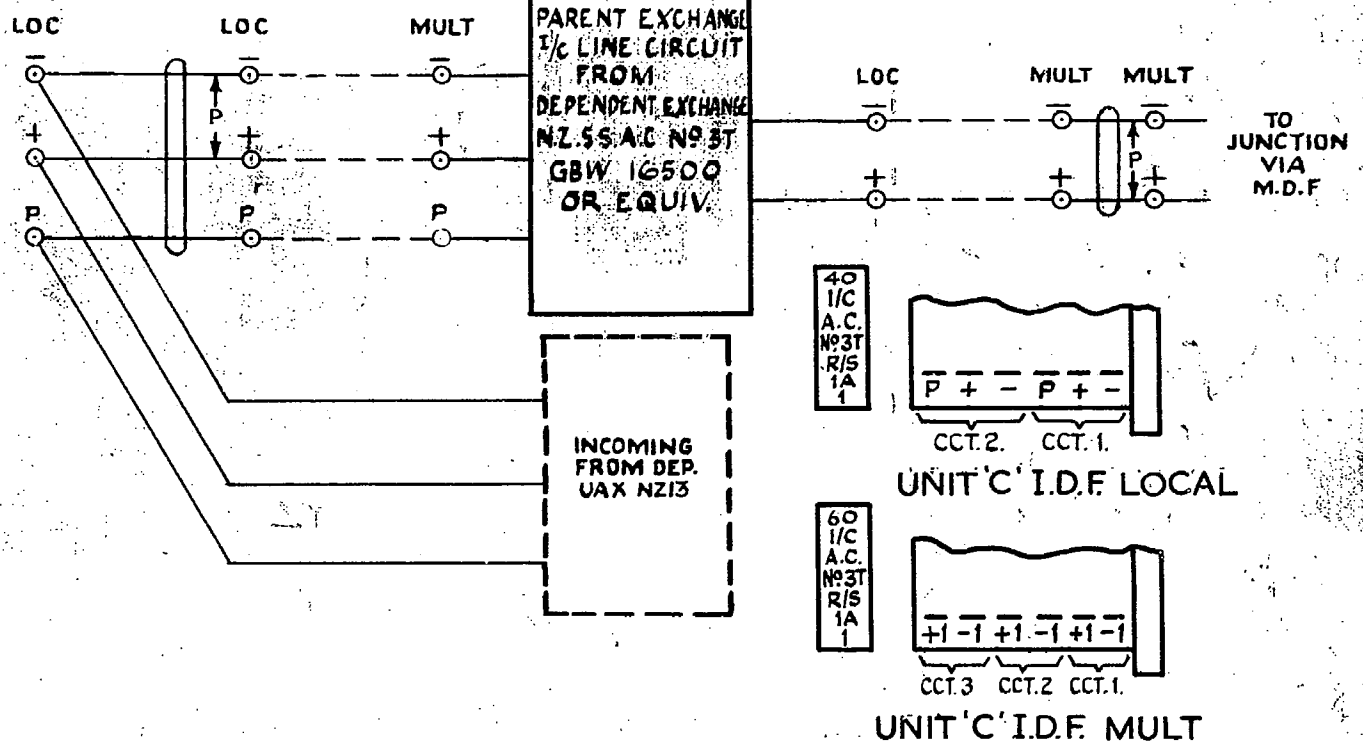


FIG. D. PARENT U.A.X. NZ 13 UNI-DIRECTIONAL WORKING FROM DEPENDENT UAX NZ13

REF. TO SHT. 3 ADDED.		(13726)	4	8.10.70	R.W.	PARENT EXCHANGE 1/2 LINE CIRCUIT FROM DEPENDENT EXCHANGE NZ. S.S. A.C. N° 3T
ISSUE ADVANCED NO AMENDMENT		(8736)	3	9.12.68	R.	
CABLING SIGNS MOVED. BLOCK MARKING ADDED.		(58052)	2	2.12.66	R/S	
			1			
AMENDMENT PARTICULARS			ISSUE	DATE	APP.	REF. :- 50V/S
- NZPO. -			DRAWN	CHECKED	WIRING	GBX 16500
					CSH	SHEET 2-3

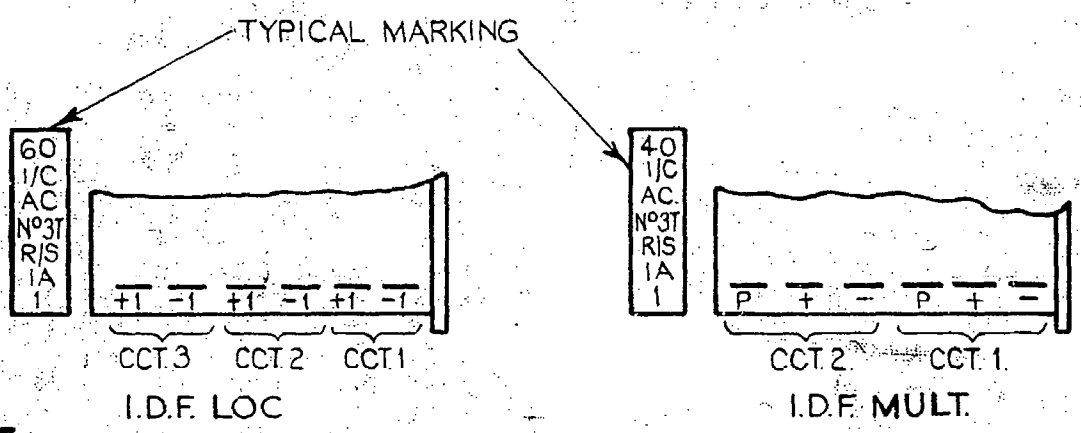
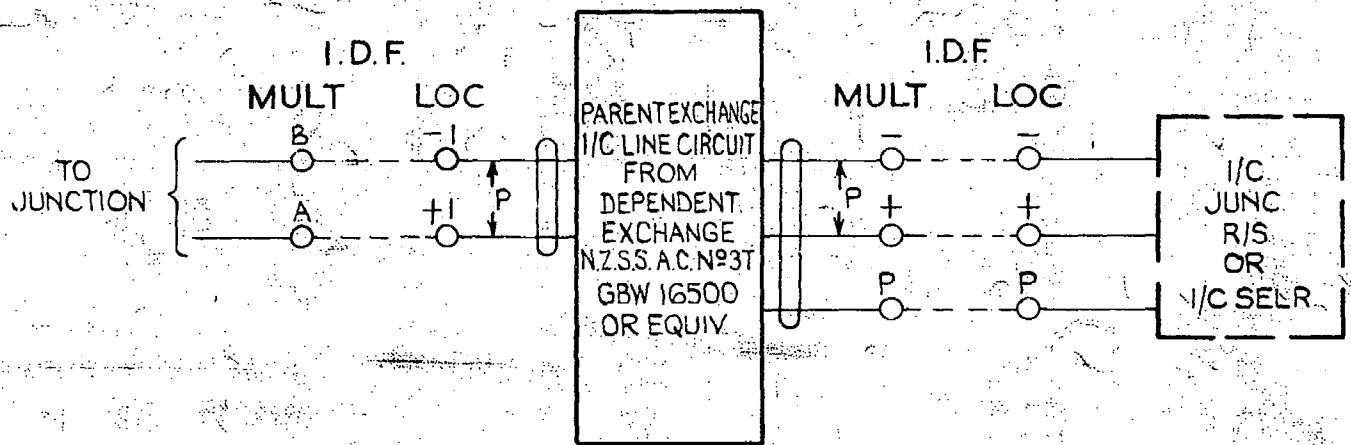


FIG. E.

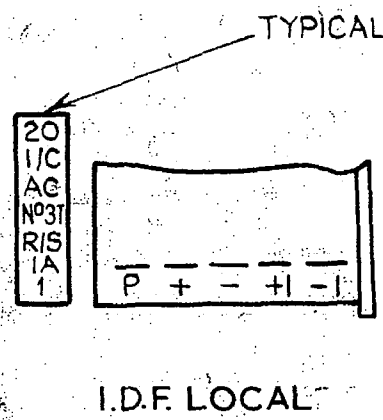
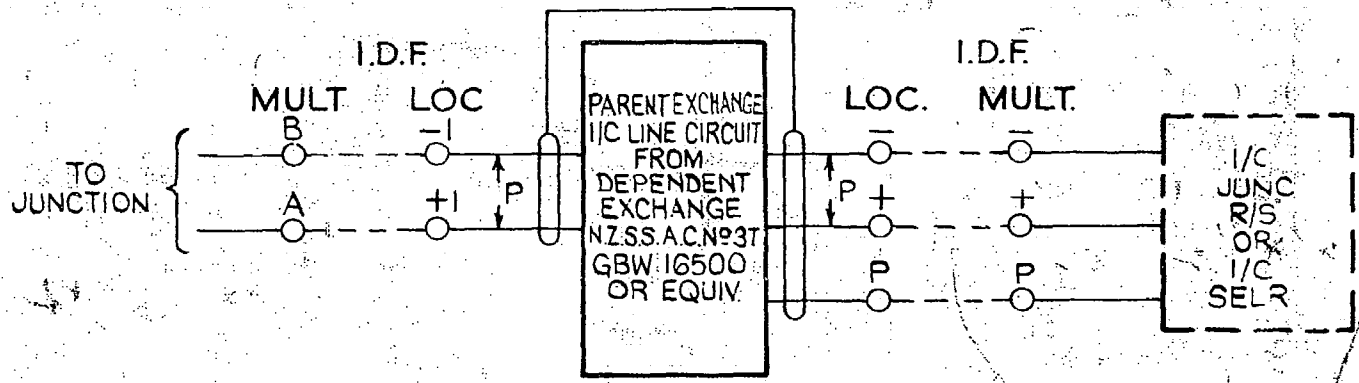


FIG. F.

					PARENT EXCHANGE I/C LINE CIRCUIT FROM DEPENDENT EXCHANGE N.Z.S.S. AC. N° 3T.				
					(13726)	4	8-10-70	R.W.	
AMENDMENT PARTICULARS				ISSUE	DATE	APPD	REF:	50V	S
N.Z.P.O.							GBX 16500		SHEET 3-3

Rev. 2/2/70 2/2/70 1.8.70