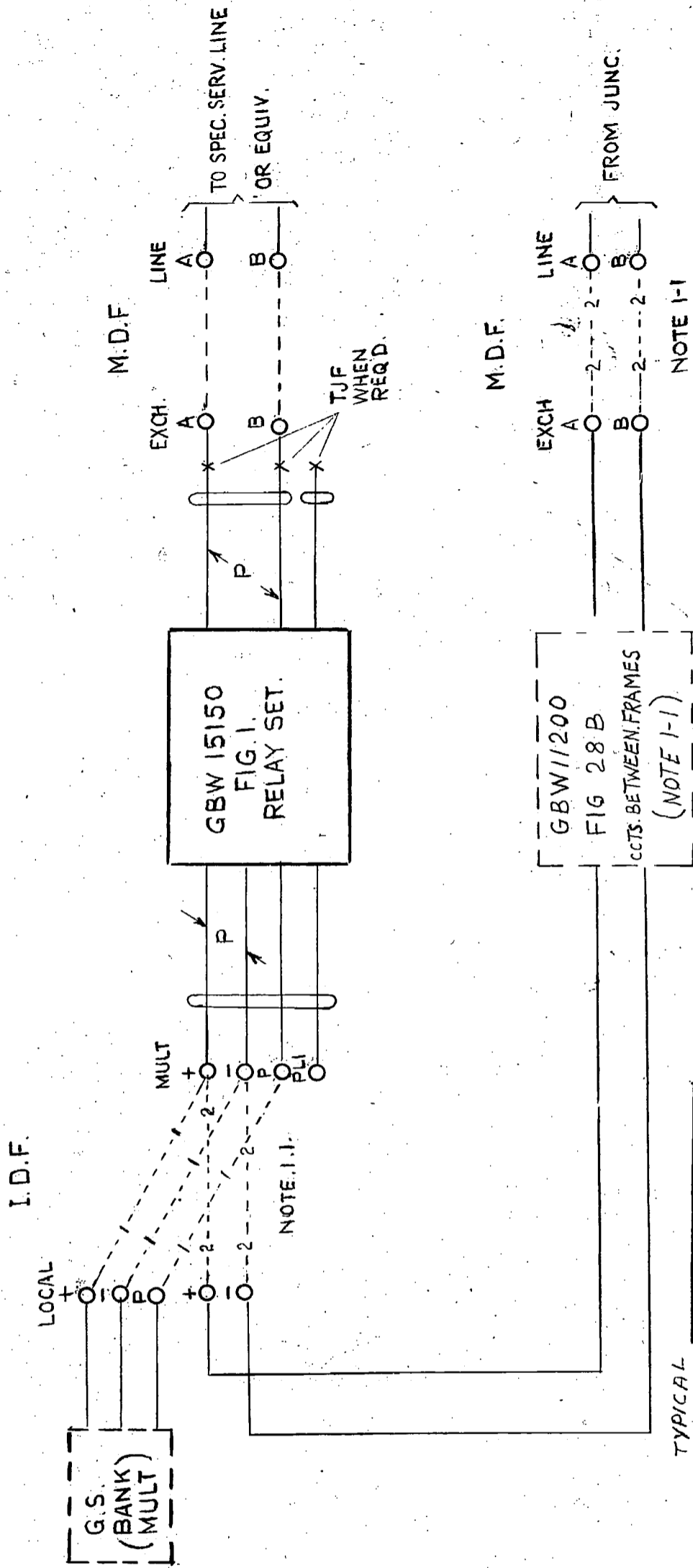


FIG. A.

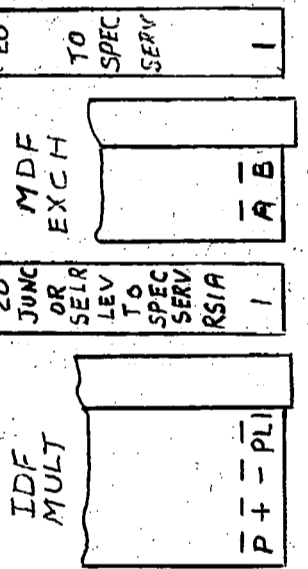
FROM G.S. BANKS OR JUNCTION DIRECT TO SPEC. SERV. LINE,
OR EQUIV. DIRECT WITHOUT NEGATIVE IMPEDANCE REPEATER (FIG 2)



NOTES

- 1-1 WHEN ACCESS IS VIA G.S. BANKS PROVIDE ---1---1---
- WHEN ACCESS IS VIA JUNCTION PROVIDE ---2---2---
- & GBW 11200 FIG-28 B.

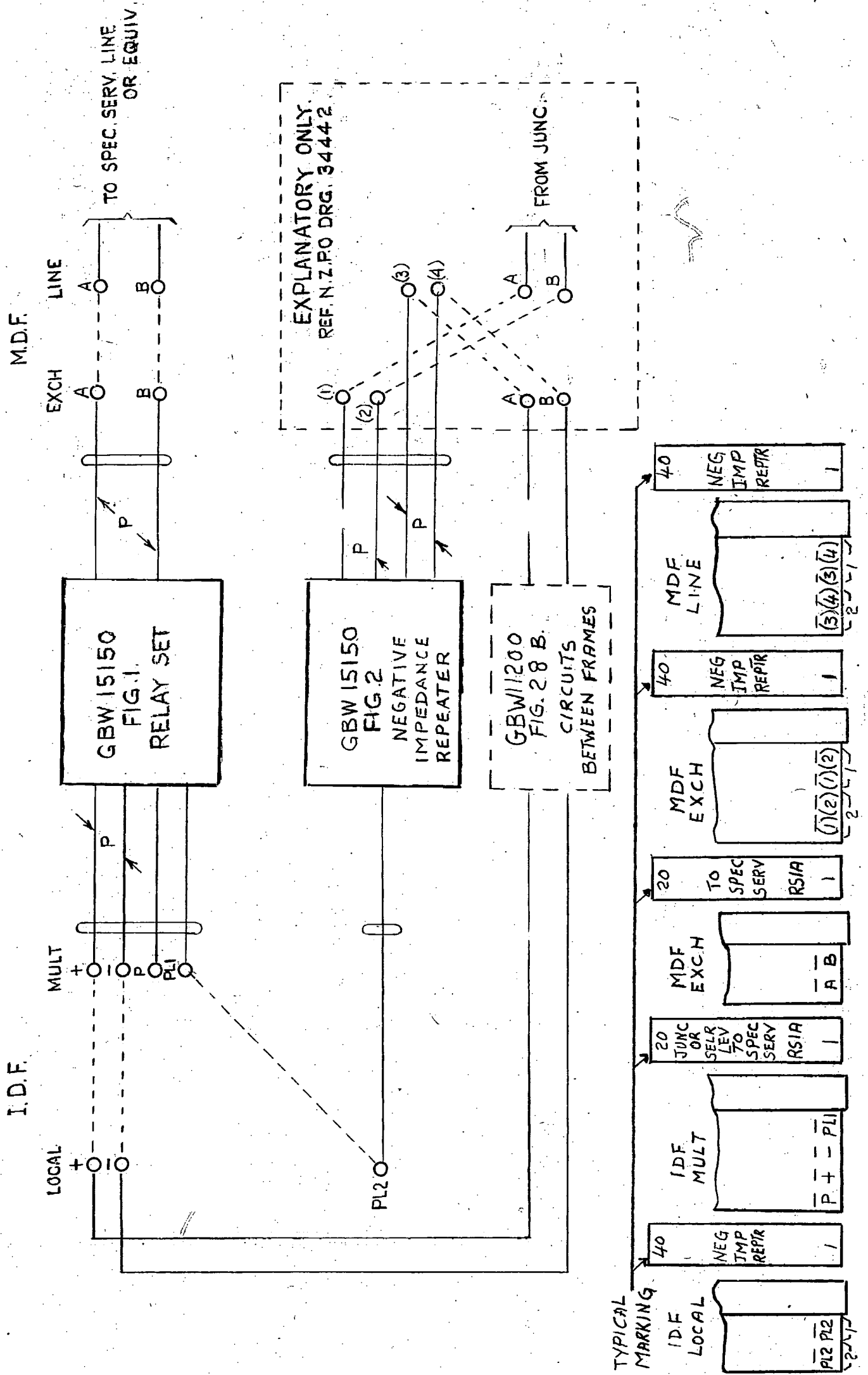
TYPICAL MARKING



A3	DRAWN J.D.	ENGR.	I/C JUNCTION OR SEL.LEVEL R/S TO SPECIAL SERVICE LINES WITH OR WITHOUT MANUAL HOLD AND NEG. IMPED. RPTR. SWITCHING	AMENDMENT PARTICULARS.	(2291)	1	5-2-73	A.B.S.H.	REFERENCES	W
							ISSUE	DATE		
DM 3	NZPO								GBX 15150. SHT 1-3	

FIG. B.

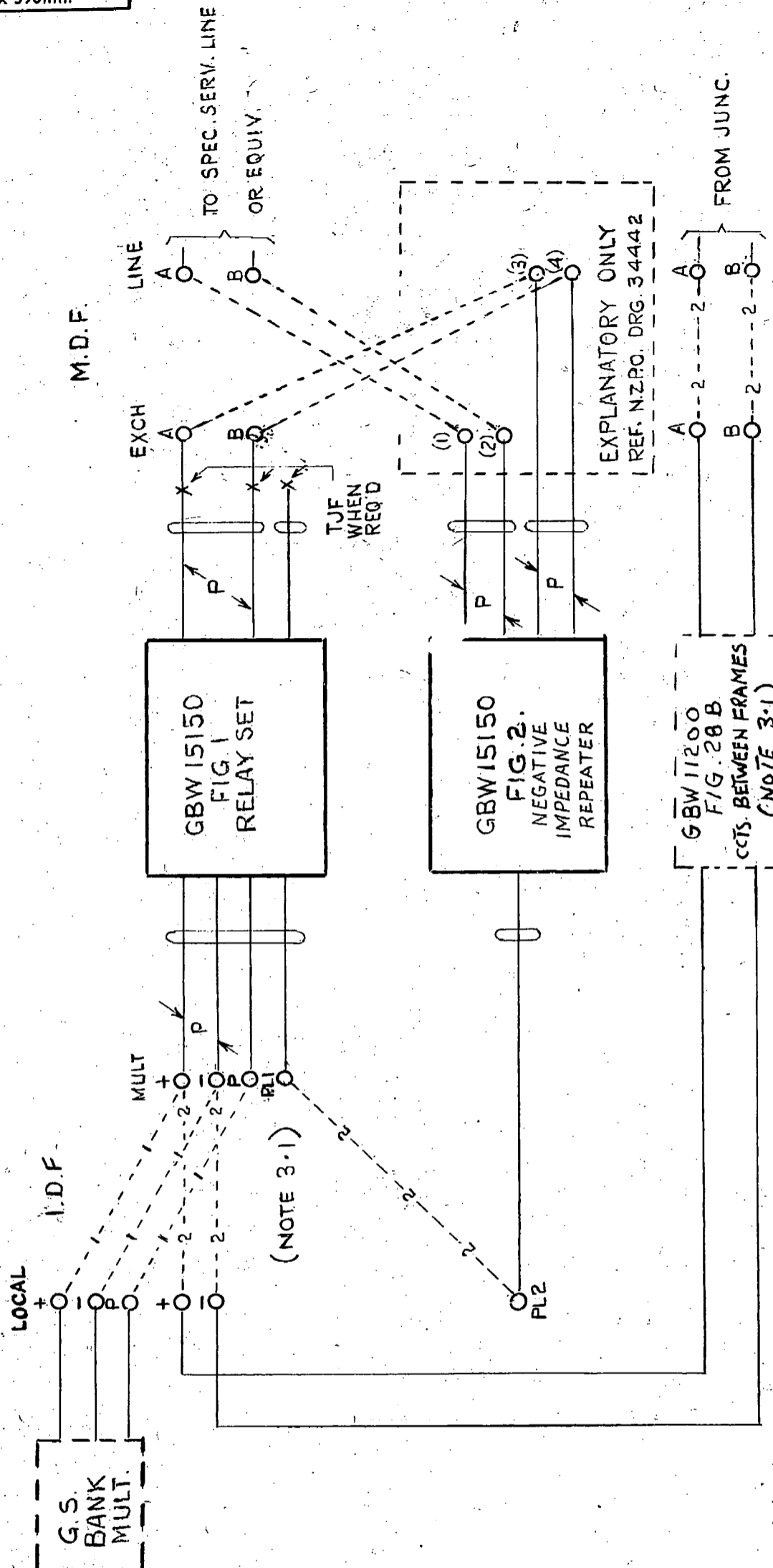
JUNCTION VIA. NEGATIVE IMPEDANCE REPEATER (FIG 2)
 TO SPEC. SERV. LINE OR EQUIV. DIRECT



				REFERENCES		W
		(2291)	1	5-2-73	AB5-H.	
		AMENDMENT PARTICULARS.		ISSUE	DATE	APP'D
A3	DRAWN	ENGR.	1/0 JUNCTION OR SEL. LEVEL R/S TO SPECIAL SERVICE LINES WITH OR WITHOUT MANUAL HOLD AND NEG IMPED RPTR SWITCHING			
	J.D.					
DM 3	NZPO		GBX 15150.		SHT. 2-3	

FIG. C.

FROM G.S. BANKS OR JUNCTION DIRECT TO SPEC. SERV. LINE
OR EQUIV. VIA NEGATIVE IMPEDANCE REPEATER (FIG 2)



NOTES

3.1 WHEN ACCESS IS VIA G.S. BANKS
PROVIDE ---1---1---1---
WHEN ACCESS IS VIA JUNCTION
PROVIDE ---2---2---2--- & GBW 11200
FIG 2.8 B.

TYPICAL MARKING

40	NEG IMP REPTR	1
40	NEG IMP REPTR	1
20	TO SPEC SERV	RSIA 1
20	MDF EXCH	A B
20	JUNC OR SEL TO SPEC SERV	RSIA 1
40	IDF MULT	P + - PL1
40	NEG IMP REPTR	1
40	MDF LINE	(3)(4) (3)(4) (2)(1) (2)
40	IDF LOCAL	PL2 PL2 (2)(1)

EXPLANATORY ONLY
REF. NZPO. DRG. 34442

FROM JUNG. A-2-2-2 B-2-2-2 (NOTE 3.1)

ccTs. BETWEEN FRAMES (NOTE 3.1)

AMENDMENT PARTICULARS.			REFERENCES		
(2291) 1 5-273 AB5-H.			W		
ISSUE DATE APP'D					
A3	DRAWN	ENGR.	1/C JUNCTION OR SEL. LEVEL R/S TO SPECIAL SERVICE LINES WITH OR WITHOUT MANUAL HOLD AND NEG. IMPED. RPTR. SWITCHING.		
	CHECK'D	ENG. DIV.			
DM 3	NZPO		GBX 15150		WHT 3