

TYPICAL MARKINGS ON F/S AUXY. STRIP CONN.

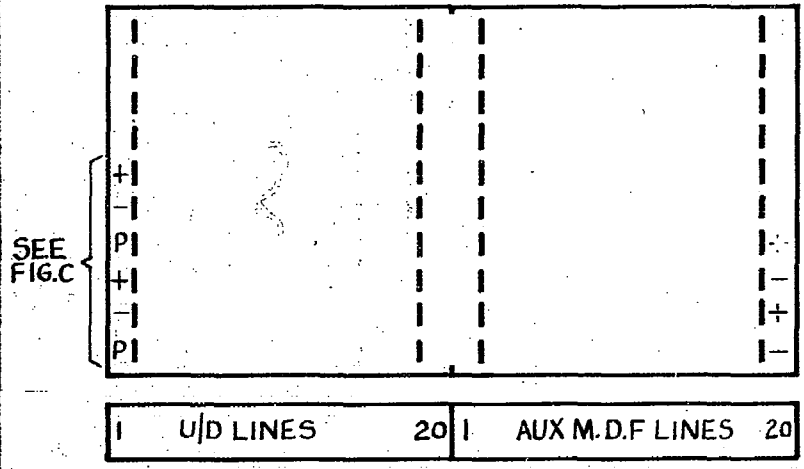


FIG. A
11-15 PBX SERVICE.
TRAFFIC TO EXCH.

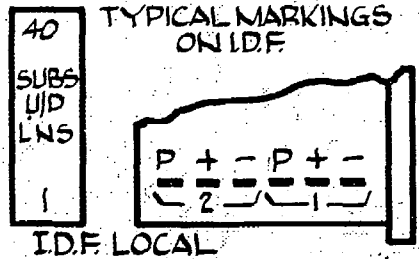
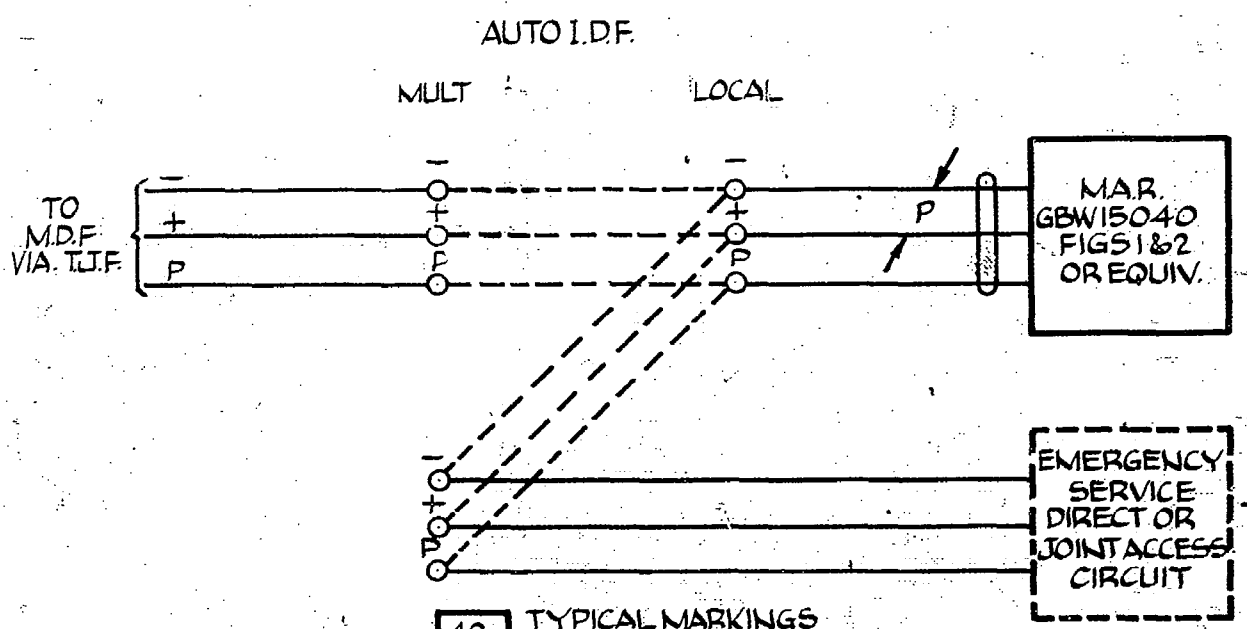


FIG. B.
EMERGENCY SERVICE ONLY

ADVANCED IN ISSUE. NO AMENDMENTS. (72834)	8	8-5-64	DBK	SUBSCRIBERS UNI-DIRECTIONAL LINES 3000 TYPE OR 600 TYPE RELAYS.
SHEET 3 ADDED. (72284)	7	14-2-64	DBK	
TITLE & FIG. A. MODIFIED.	6			
FIG. A TAGBLOCK INFO. REVISED.	5			
REVISED & REDRAWN	4			
REVISED & REDRAWN. SHT. REF WAS 1-3	3			
MINOR MODS	2			
AMENDMENT PARTICULARS	ISSUE	DATE	APP ⁿ	REF-
N.Z.P.O.				
DRAWN	CHECKED	WIRING	CIRCUIT	

GBX 15040

F/S RACK.

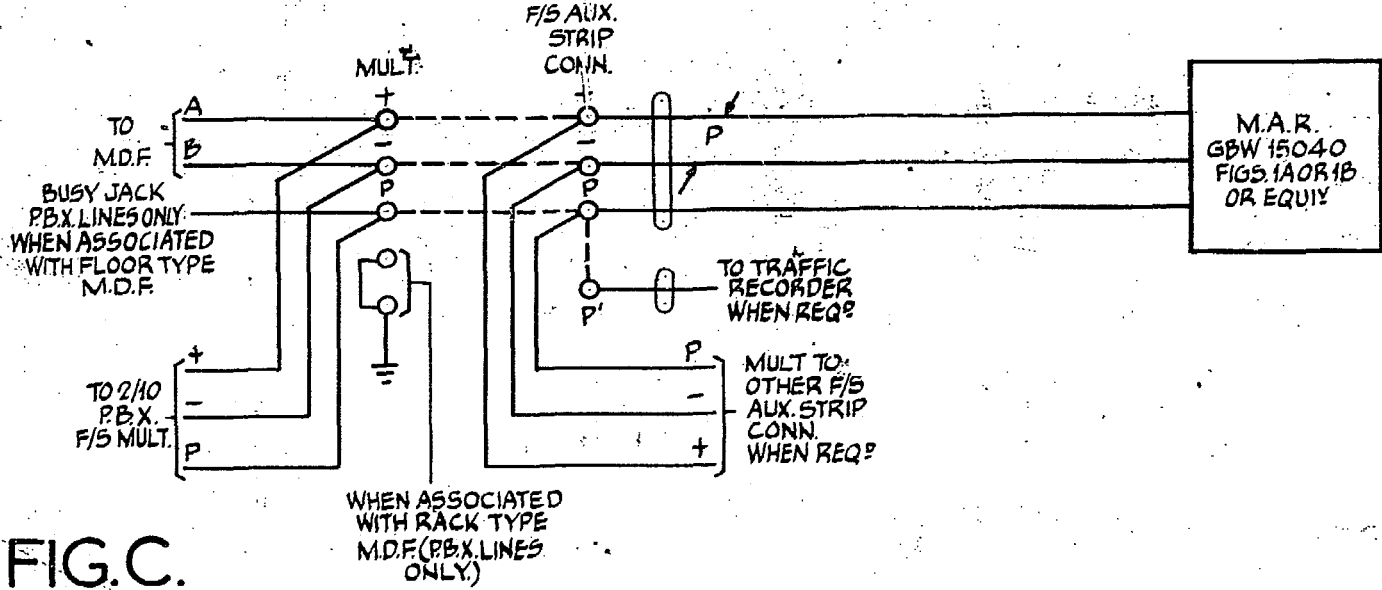


FIG. C.

11-15 PBX. SERVICE TRAFFIC TO SUBSCRIBER

FIG. D.

11 & OVER PBX. SERVICE TRAFFIC TO SUBSCRIBER

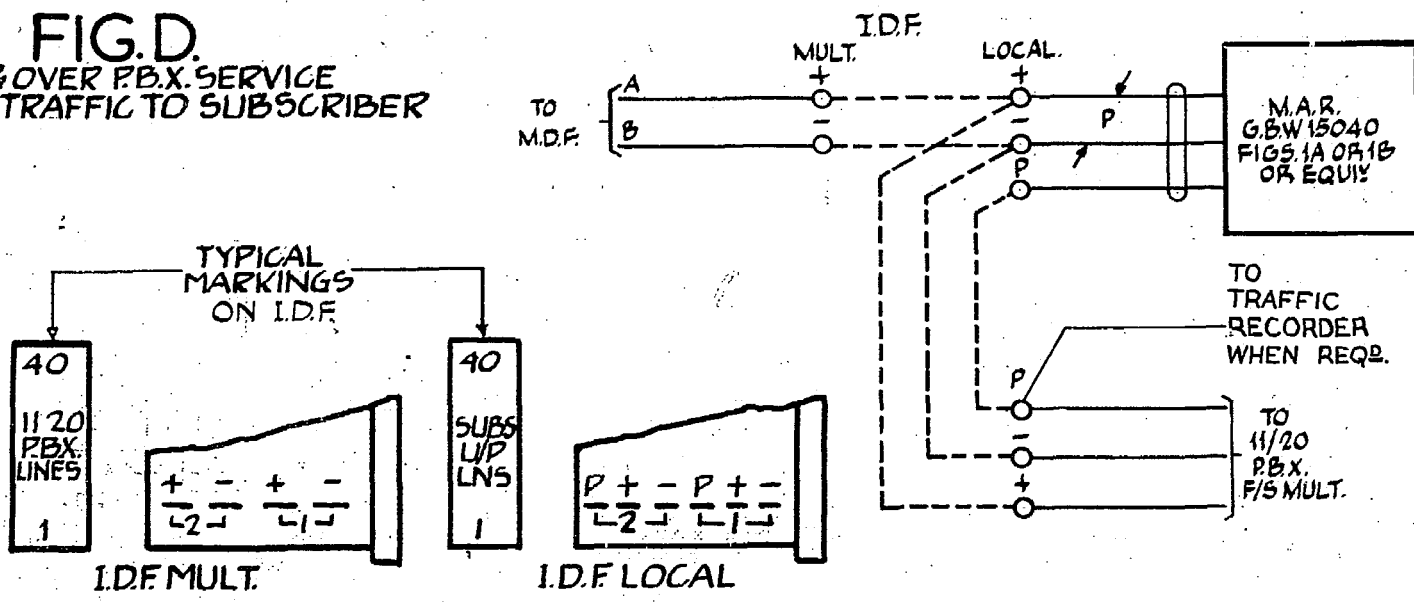
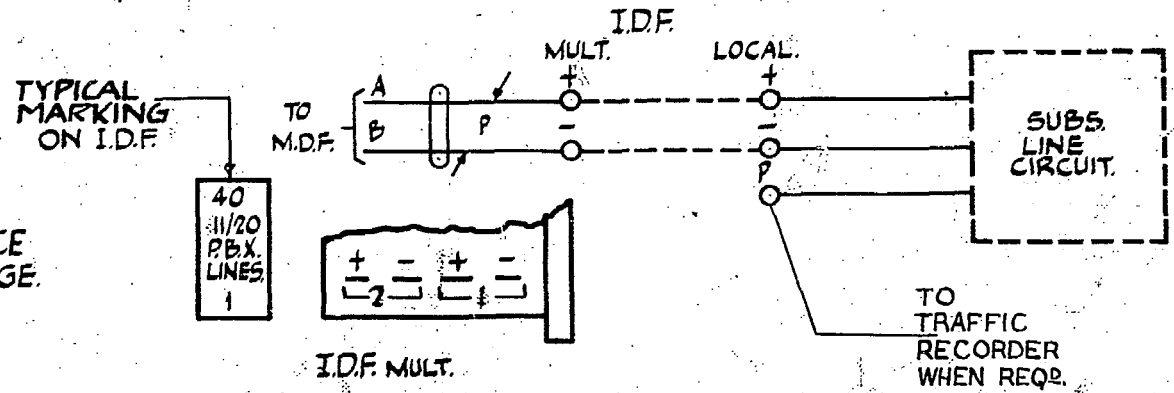


FIG. E.

11 & OVER PBX. SERVICE TRAFFIC TO EXCHANGE



SUBSCRIBERS UNIDIRECTIONAL LINES 3000 TYPE OR 600 TYPE RELAYS.

FIGS. D & E REVISED. (72834)	(72284)	8	8.5.64	DBK
SHEET 3 ADDED. FIG. E TITLE & FIG. C REVISED.		7.	14.2.64	DBK
REDRAWN. TITLE & FIGS. REVISED.		6.		
AMENDMENT PARTICULARS	ISSUE	DATE	APP.	REF.:-
NZ.P.O.	DRAWN K.M.	CHECKED R.K.L. 9/4/57	WRITING	CIRCUIT

GBX 15040

FIG.F

11-15 P.B.X. SERVICE TRAFFIC TO SUBSCRIBER.

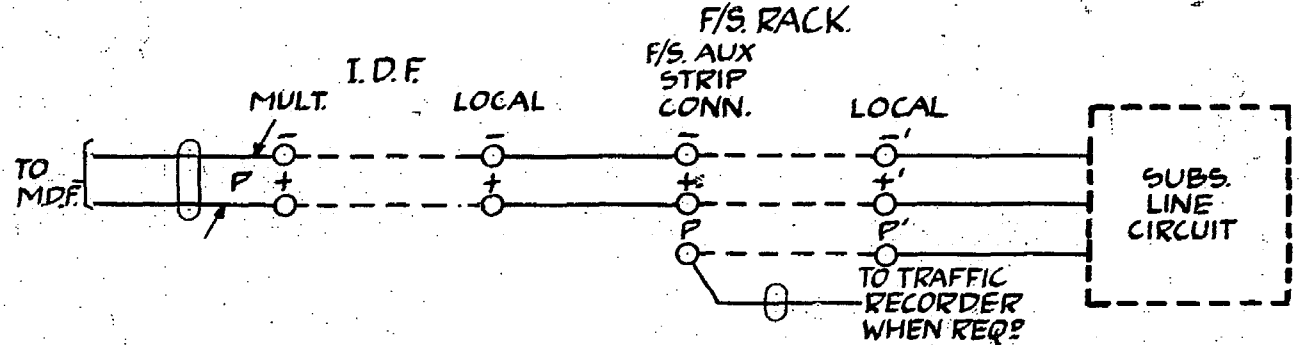
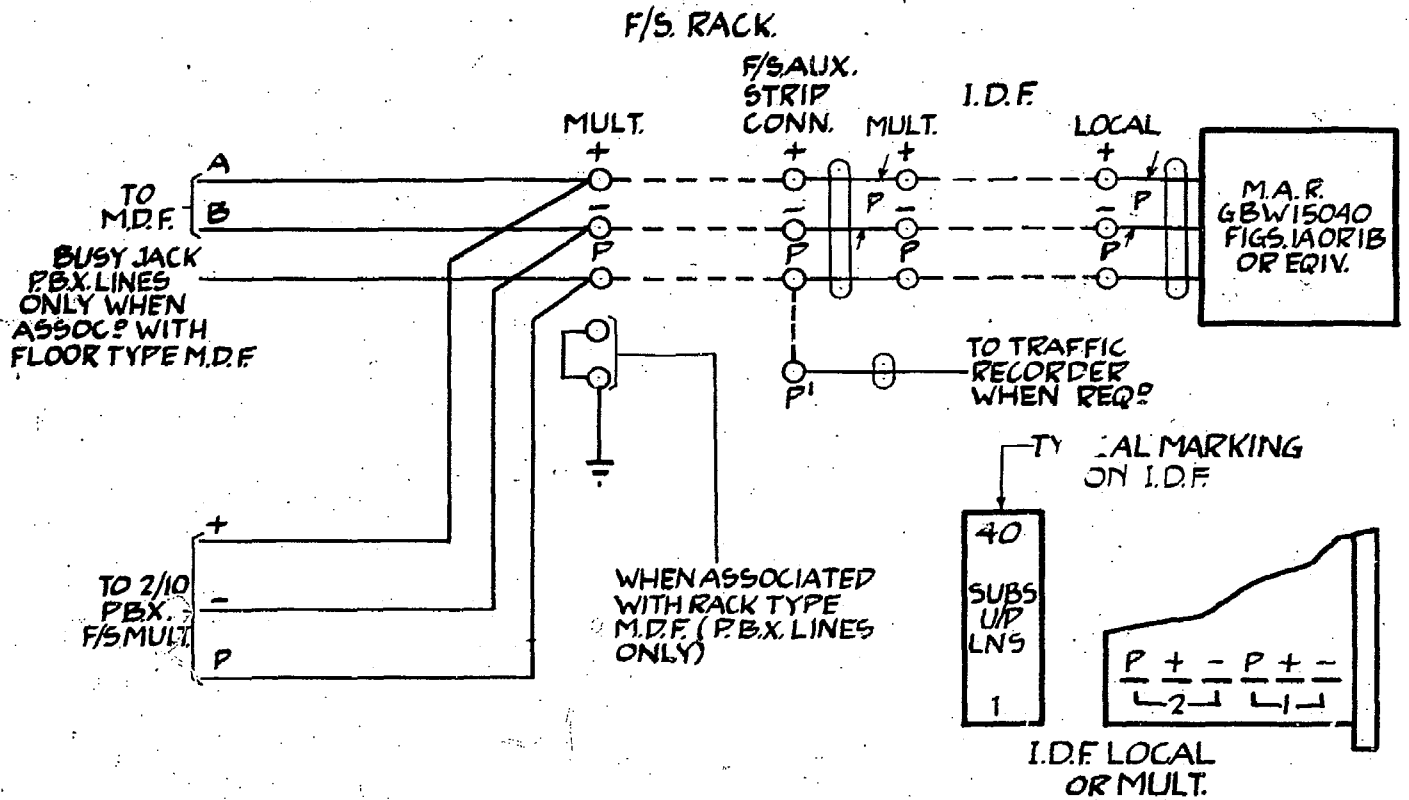
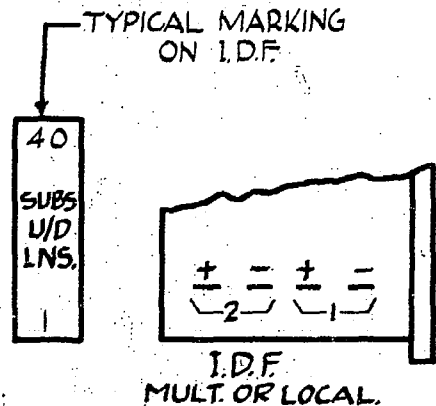


FIG.G.
11-15 P.B.X. SERVICE TRAFFIC TO EXCH.
FOR T/B LAYOUT AUX. STRIP CONN. ETC. SEE FIG. A



				SUBSCRIBERS UNI-DIRECTIONAL LINES 3000 TYPE OR 600 TYPE RELAYS.	
ADVANCED IN ISSUE. NO AMENDMENTS (72834)		8	8-5-64	DBX	
(72284)		7	14-2-64	DBX	
AMENDMENT PARTICULARS		ISSUE	DATE	APPD	REF:-
NZ.P.O.		DRAWN EB.	CHECKED SR.	GBX 15040	
					SHEET 3-3