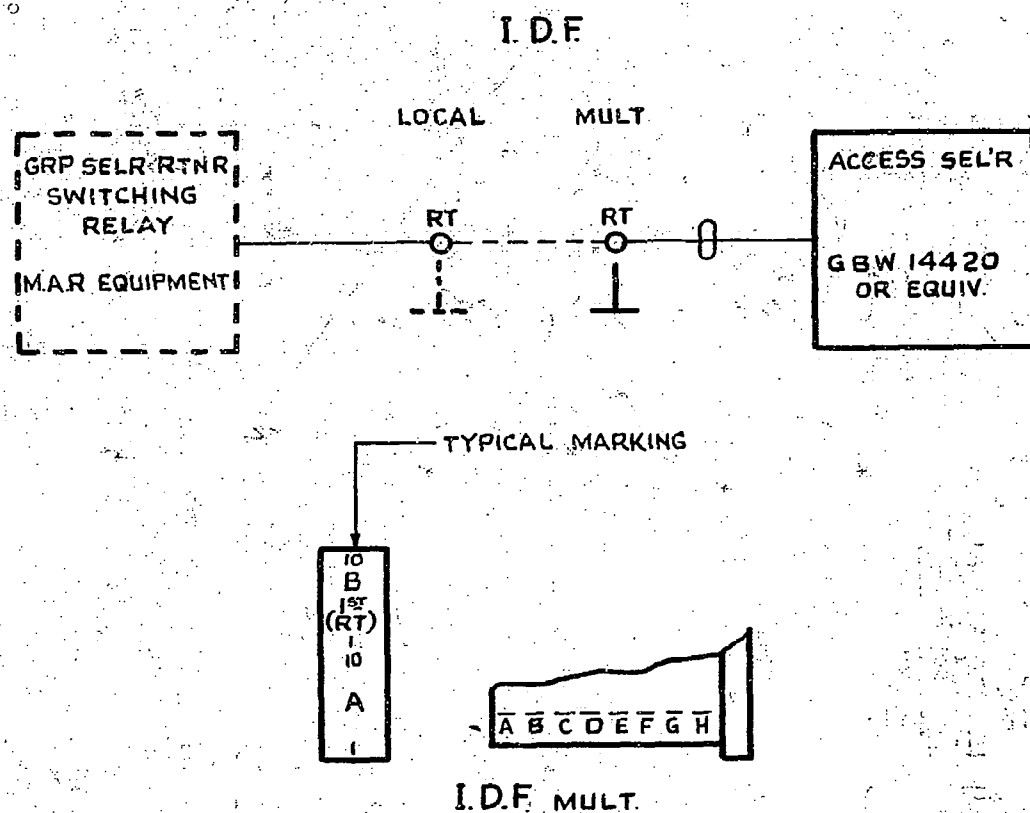


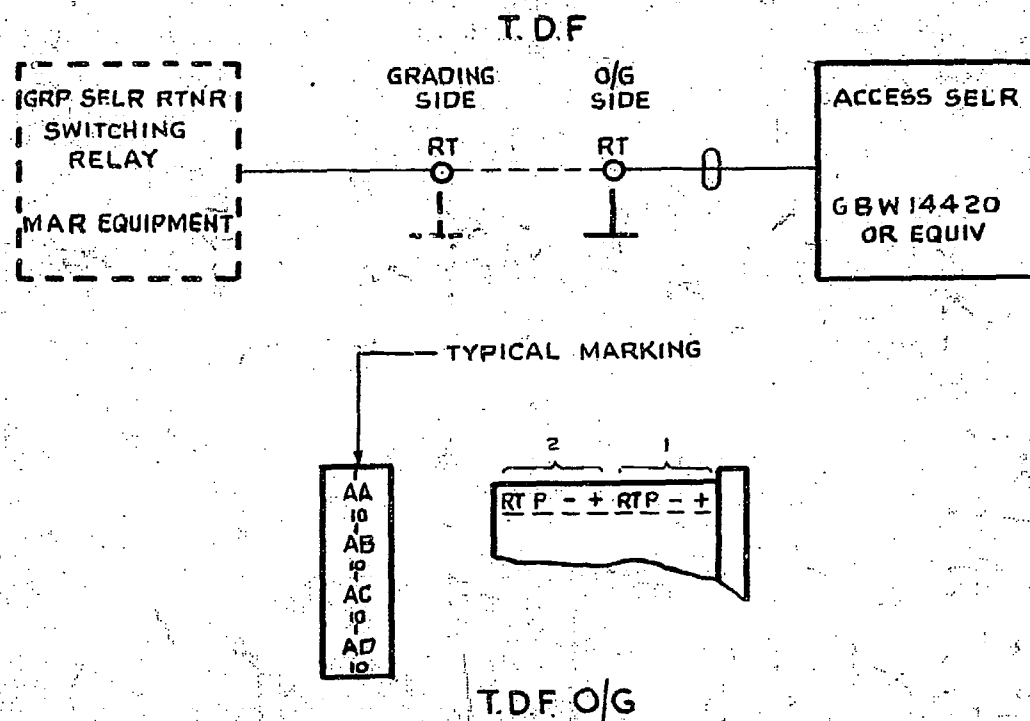
# FIG. A

I.D.F. TERMINATION  
NOT TO BE USED FOR NEW WORK



# FIG. B

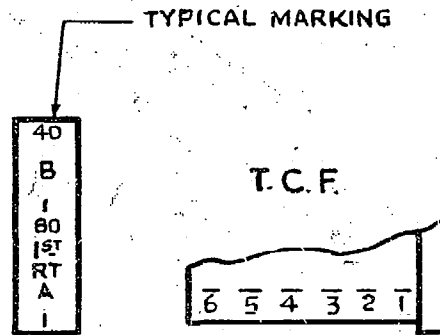
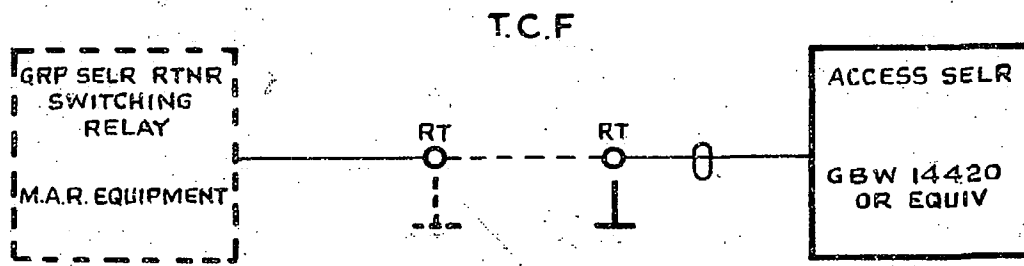
T.D.F. TERMINATION  
IN EXCHANGES WITHOUT I.D.F.



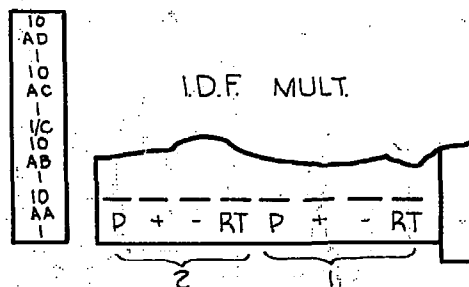
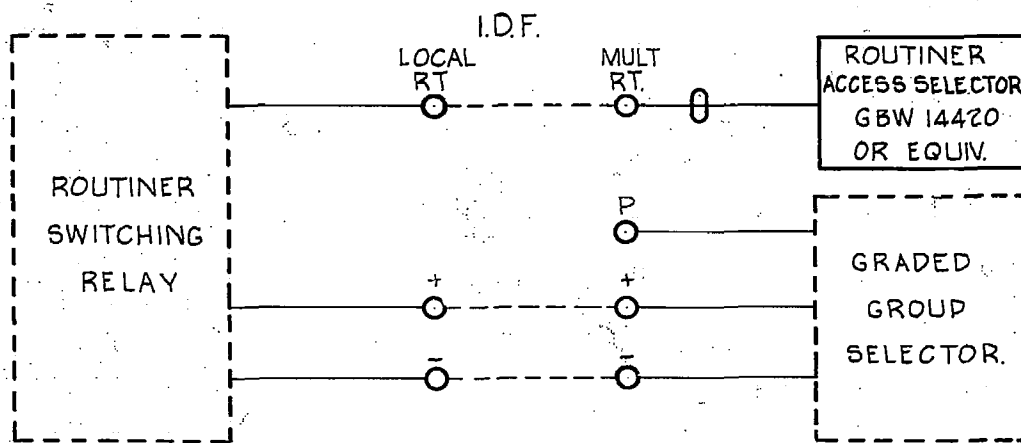
				ROUTINER ACCESS SELECTOR FOR 200 OUTLET GROUP SELECTORS ON RACKS WITH GRADING FACILITIES 2000 TYPE			
AMENDMENT PARTICULARS				ISSUE	DATE	APP <sup>O</sup>	E
FIG. A. NOTE RE NEW WORK ADDED. (58335)				4	2-12-66	<i>QIB</i>	
FIG. A ALTERNATIVE STRIP CONN. DELETED (57200)				3	11-5-62	<i>QIB</i>	
FIG. A ALTERNATIVE STRIP CONN. ADDED (56945)				2	22-3-62	<i>QIB</i>	
(65214)				1	11-7-55	<i>QIB</i>	
N.Z.P.O.				DRAWN	CHECKED	WIRED	CIRCUIT
				GBX 14420			
				SHEET 12			

# FIG. C

T.C.F. TERMINATION  
IN EXCHANGES WITHOUT I.D.F.  
NOT TO BE USED FOR NEW WORK



# FIG. D. I.D.F. TERMINATION



				ROUTINER ACCESS SELECTOR FOR 200 OUTLET GROUP SELECTORS ON RACKS WITH GRADING FACILITIES 2000 TYPE	
AMENDMENT PARTICULARS	ISSUE	DATE	APPD		
FIG. D. ADDED.	(58335)	4.	2-12-66	<i>R/B</i>	
NO CHANGE ISSUE ADVANCED ONLY	(57200)	3.	11-5-62	<i>R/B</i>	
NO CHANGE ISSUE, ADVANCED ONLY	(65214)	2.	22-3-62	<i>R/B</i>	
		1.	11-7-55	<i>CLM</i>	
N.Z.P.O.	DRAWN	CHECKED	WIRED	CIRCUIT	GBX 14420
					SHEET 2-2