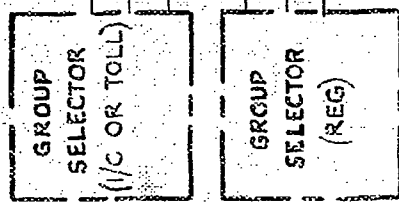
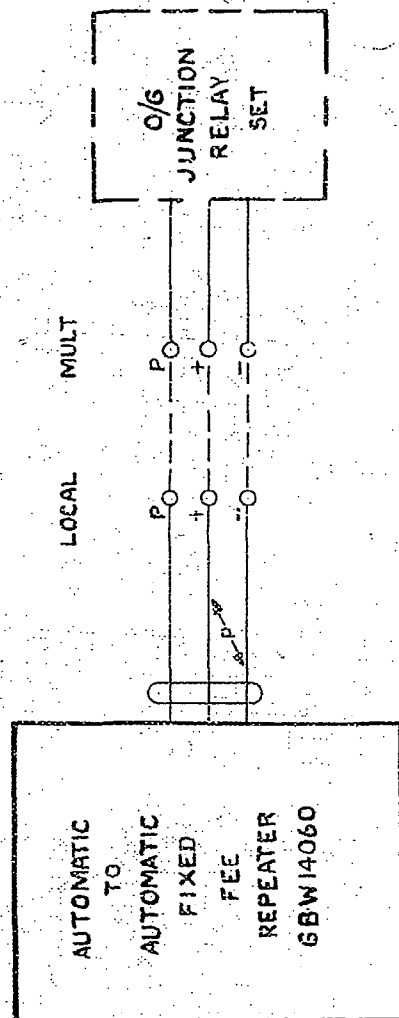


FIGA
GRADED GROUP
SELECTOR
CONNECTED VIA I.D.F.

I.D.F.



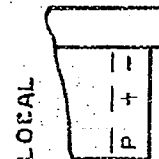
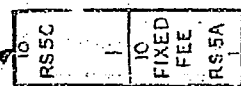
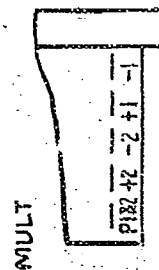
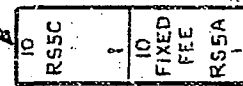
I.D.F.



TYPICAL MARKING

I.D.F.

I.D.F.



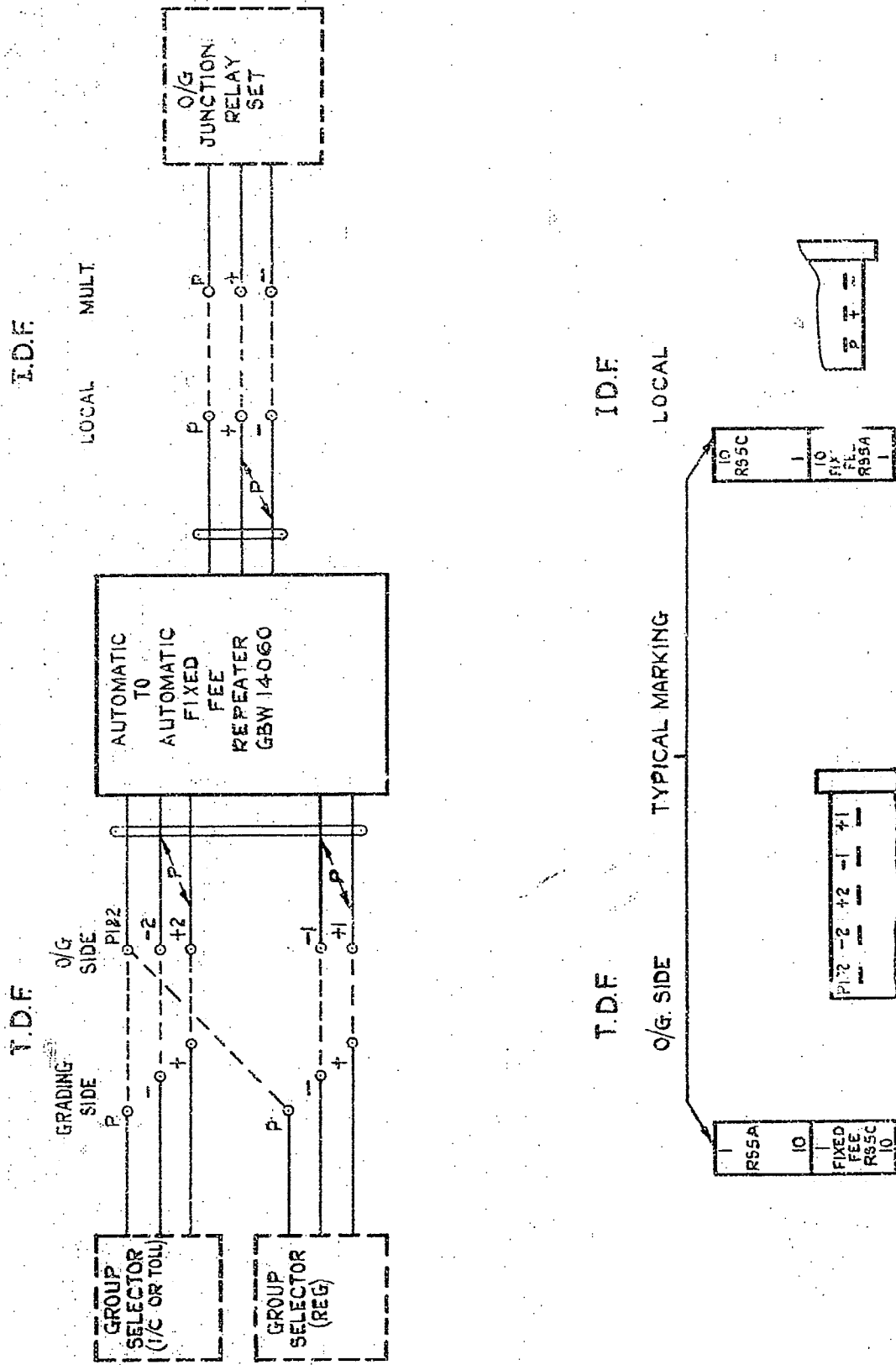
GBX 14061 DELETED	(66593)	3	21-3-63	DBM
GBX 14061 ADDED	(42062)	2	1.3.55	CLD
AMENDMENT PARTICULARS		ISSUE	DATE	APPD.
NZPO	DRAWN RB	CHECKED [Signature]	WIRING	ENGINEERS [Signature]

AUTOMATIC TO AUTOMATIC
REPEATER O/G TO
DEPENDENT TERMINAL N.Z. U.A.X.
VIA JUNCTION RELAY SET FIXED
FEE. 1-6 UNITS W/- REPEAT
METERING
MAIN AUTOMATIC EXCHANGES

GBX 14060

FIG. B

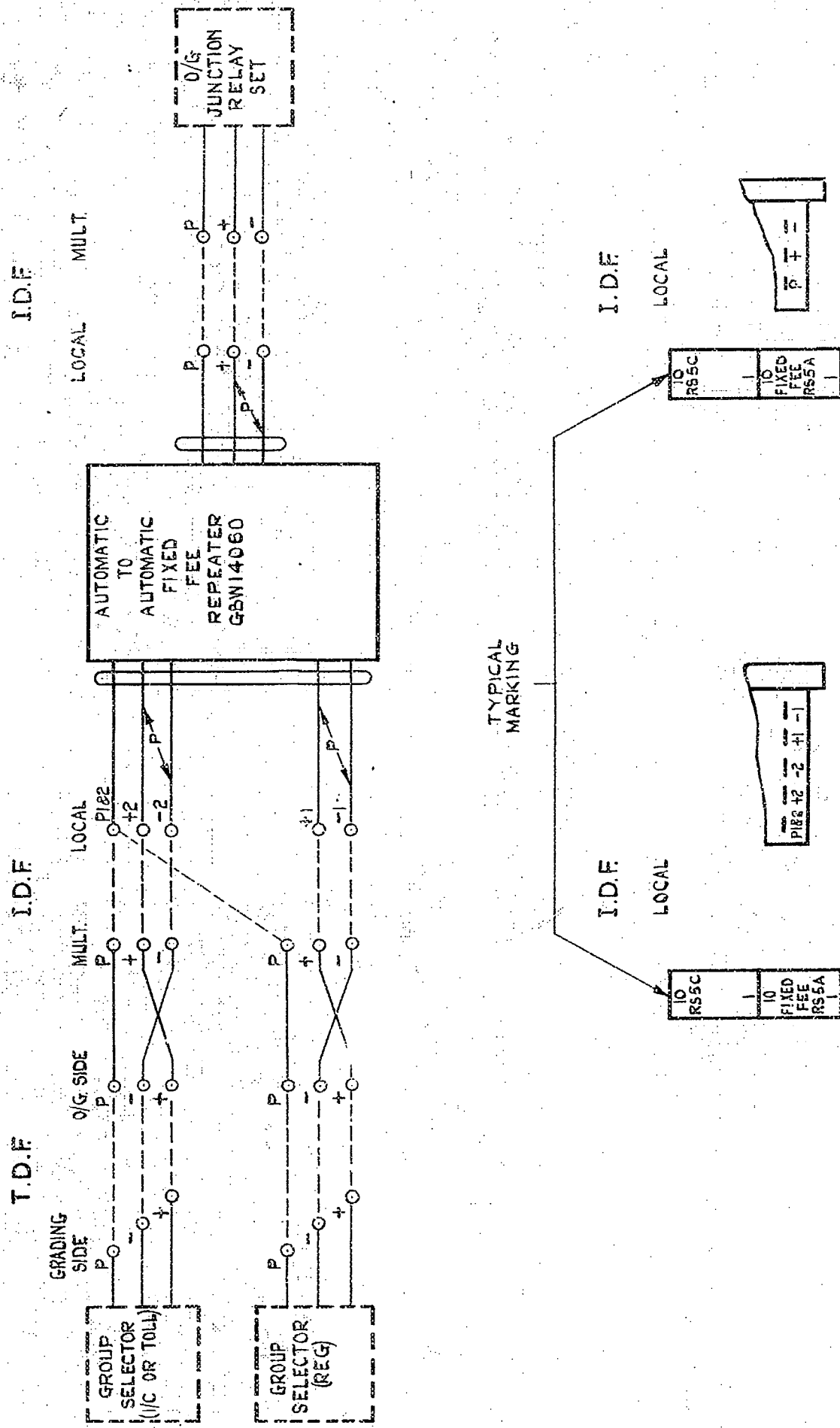
NON-GRADED GROUP SELR.
CONNECTED VIA T.D.F.



				AUTOMATIC TO AUTOMATIC REPEATER O/G TO	
				DEPENDENT TERMINAL N.Z. U.A.X.	
				VIA JUNCTION RELAY SET, FIXED	
				FEE 1-6 UNITS W/ REPEAT METERING	
				MAIN AUTOMATIC EXCHANGES	
AMENDMENT PARTICULARS		ISSUE	DATE	APPD	S
NZ PO		DRAWN	CHECKED	WIRING ENGINEERS	GBX 14060
		3B			SHEET 2-4

FIG. C

NON-GRADED GROUP SELECTOR
CONNECTED VIA T.D.F. & I.D.F.



GBX 14061 DELETED	(66593)	3	21.3.63	OBX
GBX 14061 ADDED	(42062)	2		
		1	1.3.55	CW/TL
AMENDMENT PARTICULARS	ISSUE	DATE	APPD	S
NZPO	DRAWN	CHECKED	WIRING ENGINEERS	GBX 14060
SB	<i>[Signature]</i>		<i>[Signature]</i>	

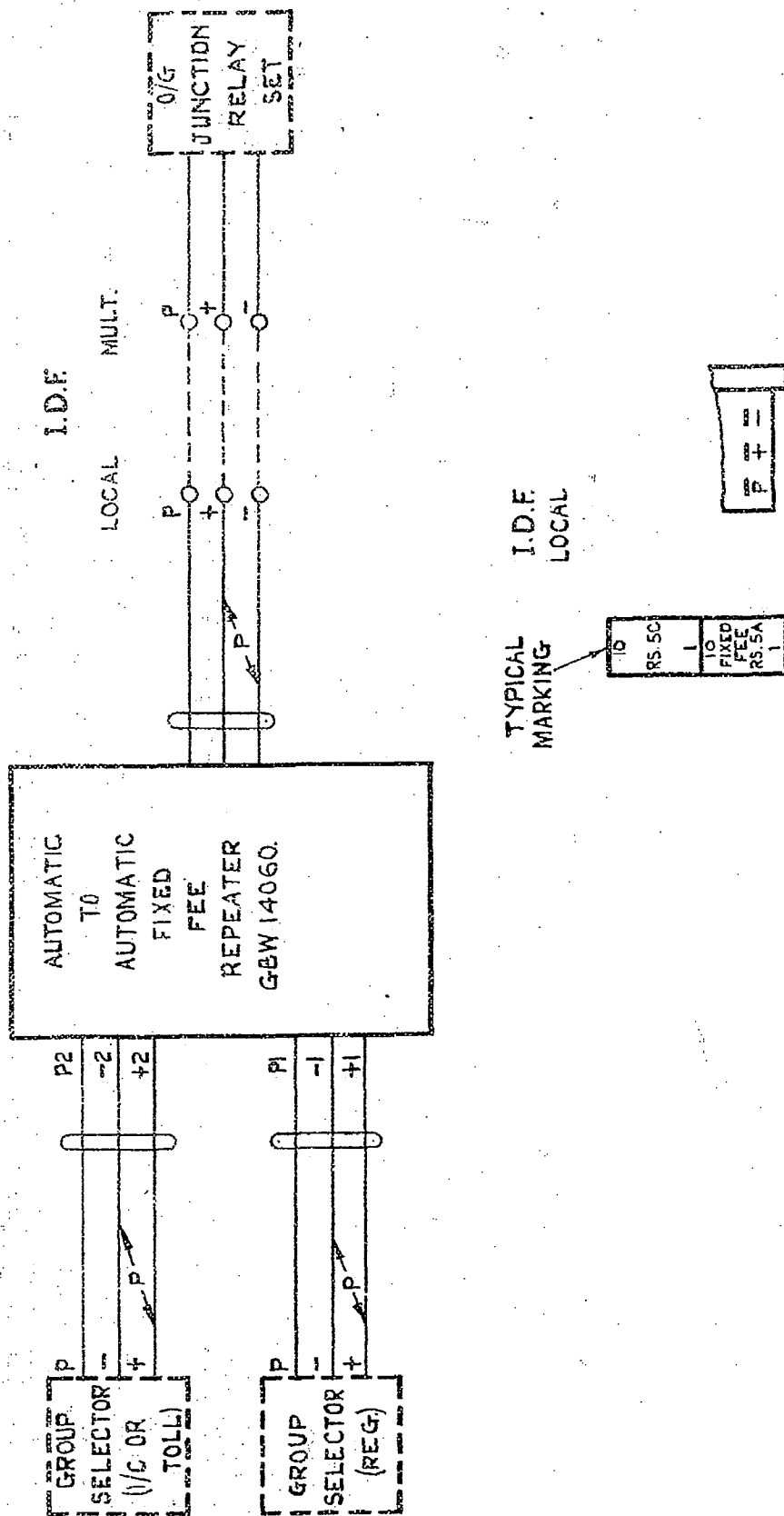
AUTOMATIC TO AUTOMATIC REPEATER O/G TO DEPENDENT TERMINAL N.Z. U.A.X. VIA JUNCTION RELAY SET, FIXED FEE 1-6 UNITS W/ REPEAT METERING MAIN AUTOMATIC EXCHANGES

GBX 14060

SHEET 3-4

FIG. D.

GRADED GROUP SELR.
DIRECTLY CONNECTED.



GBX 14061 DELETED	(66593)	3	21.3.63	DBH
GBX 14061 ADDED		2		
	(42062)	1	1.3.55	Curt
AMENDMENT PARTICULARS	ISSUE	DATE	APPD	S
NZPO	DRAWN	CHECKED	WIRING ENGINEERS	
	BE			

AUTOMATIC TO AUTOMATIC REPEATER O/G TO DEPENDENT TERMINAL N.Z. U.A.X. VIA JUNCTION RELAY SET. FIXED FEE 1-6 UNITS WITH REPEAT METERING
GBX 14060
 SHEET 4-4