

FIG. A. EXCHANGES WITH I.D.F. FOR USE WITH GRADED GROUP SELECTORS

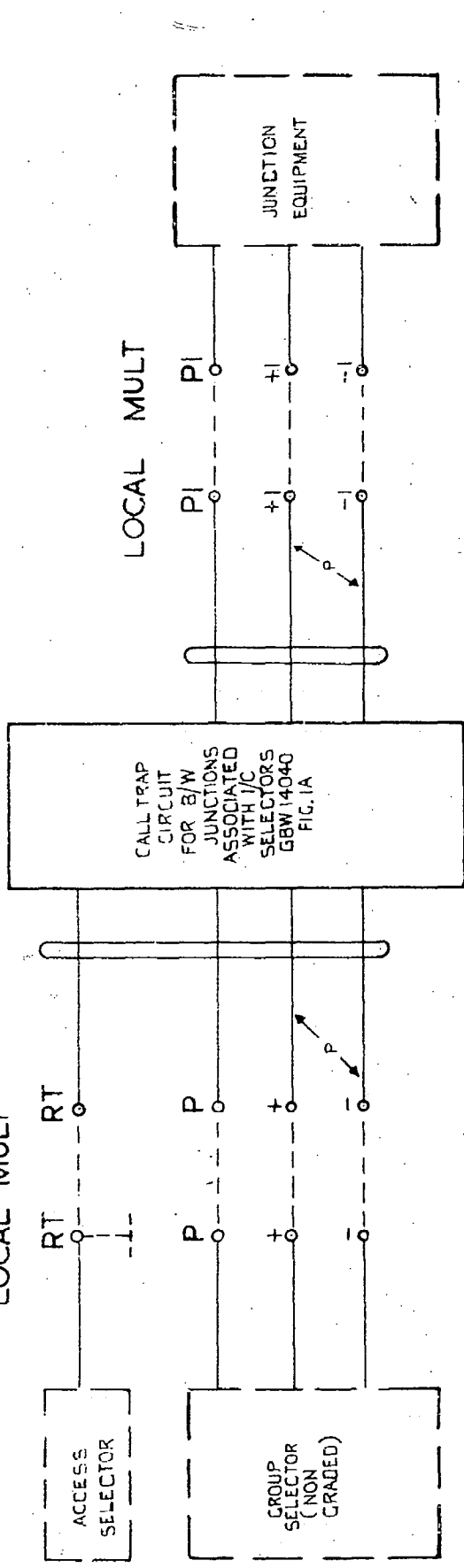
| | | | | | | | |
|---|------------------|-------|---------|--------|--|-----------|-----------|
| REPLACEMENT TCG. INCORP. (83758) | | 4 | 4-12-74 | BSH | CALL TRAP CIRCUIT FOR BOTHWAY JUNCTIONS ASSOCIATED WITH INCOMING SELECTORS | | |
| NO CHANGE ISSUE ONLY ADVANCED. (70453) | | 4 | 28-2-63 | GM/LS | | | |
| ALTERNATIVE SIDES OF I.D.F. ADDED (48799) | | 3 | 26-1-62 | GM/LS | | | |
| WAS SHEET 1-3 | | 2 | 23-2-53 | ET/LS | | | |
| AMENDMENT PARTICULARS | | ISSUE | DATE | APPD | REF | SIZE F | S |
| NZPO | ET/LS 18-5-55 | DRAWN | CHECKED | WIRING | CIRCUIT | GBX 14040 | SHEET 1-4 |

I.D.F.

I.D.F.

LOCAL MULT

LOCAL MULT



TYPICAL MARKING

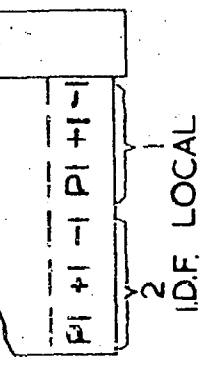
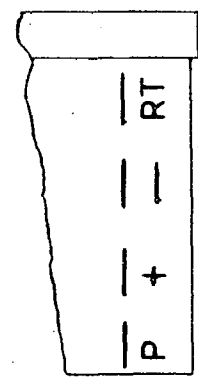
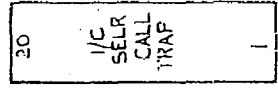


FIG. B. EXCHANGES WITH I.D.F.
FOR USE WITH NON-GRADED GROUP SELECTORS

| | | | |
|---|---------|----------|---------|
| REPLACEMENT TCG INCORP. (83758) | 4 | 4-12-74 | BSH. |
| NO CHANGE. ISSUE ONLY ADVANCED. (70453) | 4 | 28-2-63 | GM/lo |
| NO CHANGE (48799) | 3 | 26-1-62 | EM/SS |
| WAS SHEET 2-3 | 2 | 29-12-55 | ET/lls |
| | 1 | 18-5-55 | |
| AMENDMENT PARTICULARS | ISSUE | DATE | APPD |
| NZPO | ET/lls | 18-5-55 | |
| DRAWN | CHECKED | WIRING | CIRCUIT |
| 7/10 | 7/10 | | AM/4 |

CALL TRAP CIRCUIT FOR BOTHWAY JUNCTIONS ASSOCIATED WITH INCOMING SELECTORS

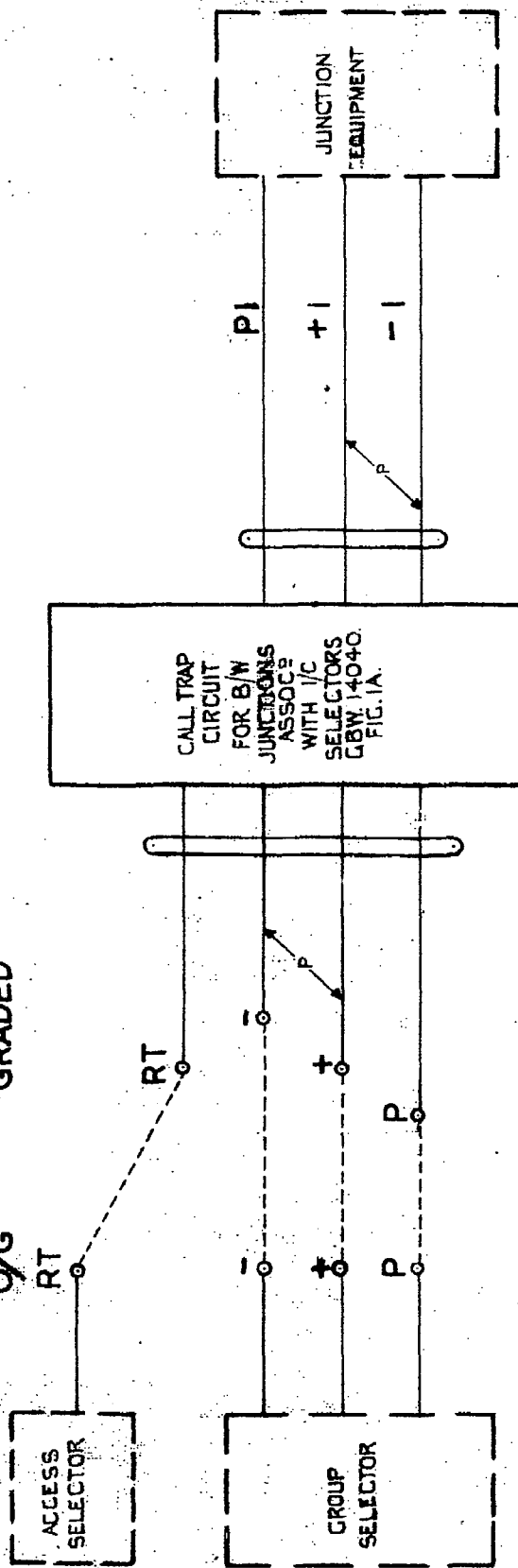
REF: GBX 14040

SIZE: F

SHEET 2-4

T.D.F.

O/G GRADED



NOTES:-
3-1. THIS FIGURE NOT TO BE USED FOR NEW WORK.

FIG. C. EXCHANGES WITHOUT I.D.F. NOTE 3-1.

| | | | | |
|--------------------------|--------------------------|-------------|-------------|----------------|
| REPLACEMENT TCG. INCORP. | (83758) | 4 | 4-12-74 | B.S.H. |
| NOTE 3-1 WAS NOT SHOWN. | (70453) | 4 | 28-2-63 | <i>3/11/63</i> |
| NO CHANGE | (48799) | 3 | 26-1-62 | <i>4/11/62</i> |
| WAS SHEET 3-3 | (65887) | 2 | 29-12-55 | <i>2/1/56</i> |
| AMENDMENT PARTICULARS | | ISSUE | DATE | APPD. |
| NZPO | <i>ETB/MS</i> 18-5-55 | <i>7/10</i> | <i>7/10</i> | <i>AWH</i> |

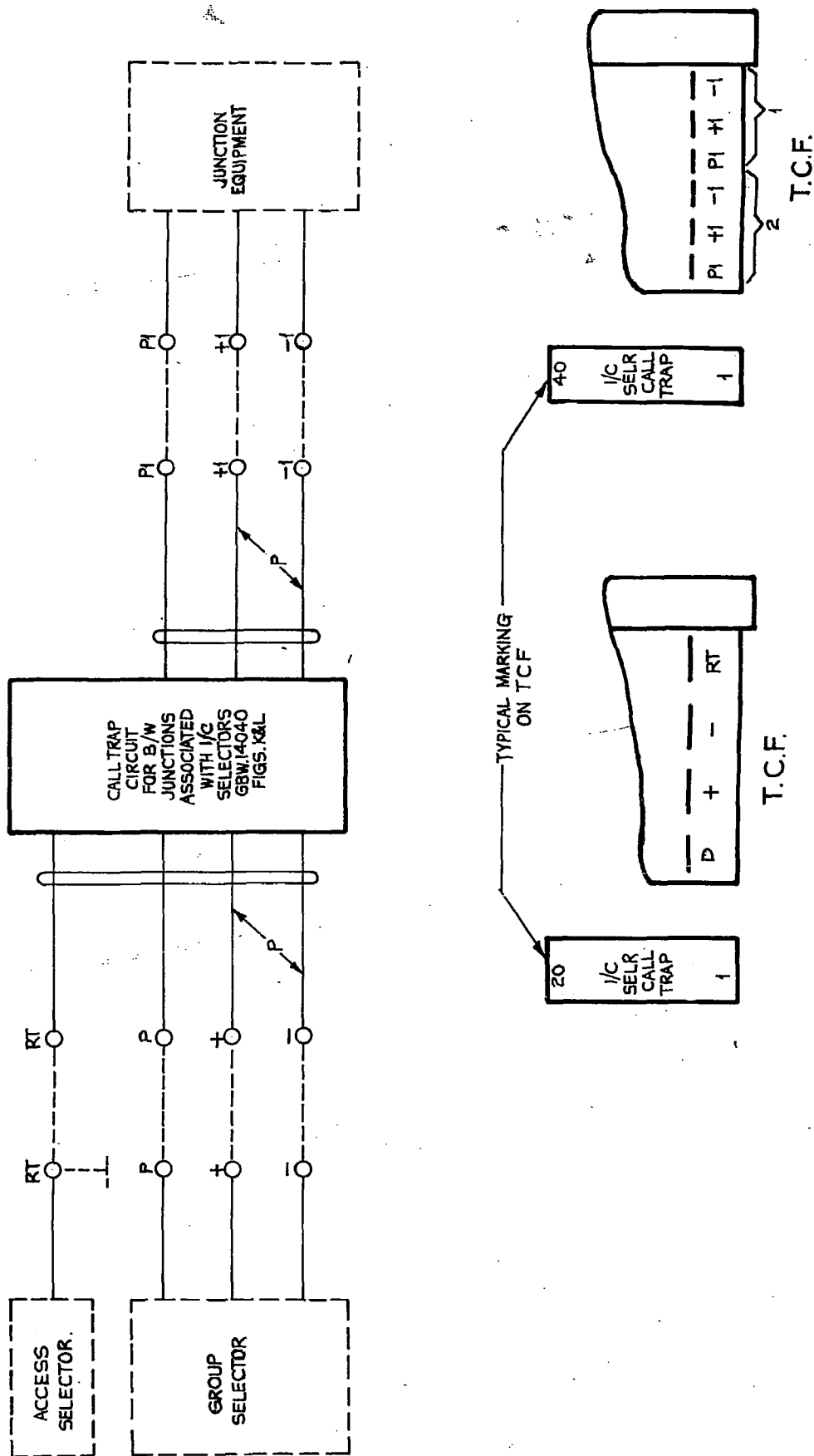
CALL TRAP CIRCUIT FOR BOTHWAY JUNCTIONS ASSOCIATED WITH INCOMING SELECTORS

GBX 14040

SHEET 3-4

T.C.F.

T.C.F.



NOTES:-

4-1 THIS FIGURE IS NOT TO BE USED FOR NEW WORK.

EXCHANGES WITHOUT I/PF CONNECTED VIA T.C.F. NOTE 4-1

FIG. D

| | | | | | | | |
|---------------------------------|-------------------|--------------|-------------------|--|---------|------------|---|
| | | | | CALL TRAP CIRCUIT FOR BOTHWAY JUNCTIONS ASSOCIATED WITH INCOMING SELECTORS | | | |
| REPLACEMENT TCG INCORP. (83758) | 4 | 4-12-74 | BSH. | | | | |
| NOTE 4-1 WAS NOT SHOWN. (70453) | 4 | 28-2-63 | GM/BS | | | | |
| NO CHANGE (48799) | 3 | 26-1-62 | MM/SL | | | | |
| | 2 | 29-12-55 | | | | | |
| AMENDMENT PARTICULARS | ISSUE | DATE | APPD | REF: | SIZE | F | S |
| | | | | GBX 14040 | | | |
| NZPO | ETB/MS 15-2-56 | DRAWN FJD | CHECKED J.P.C. | WIRING | CIRCUIT | SHEET 4-4. | |