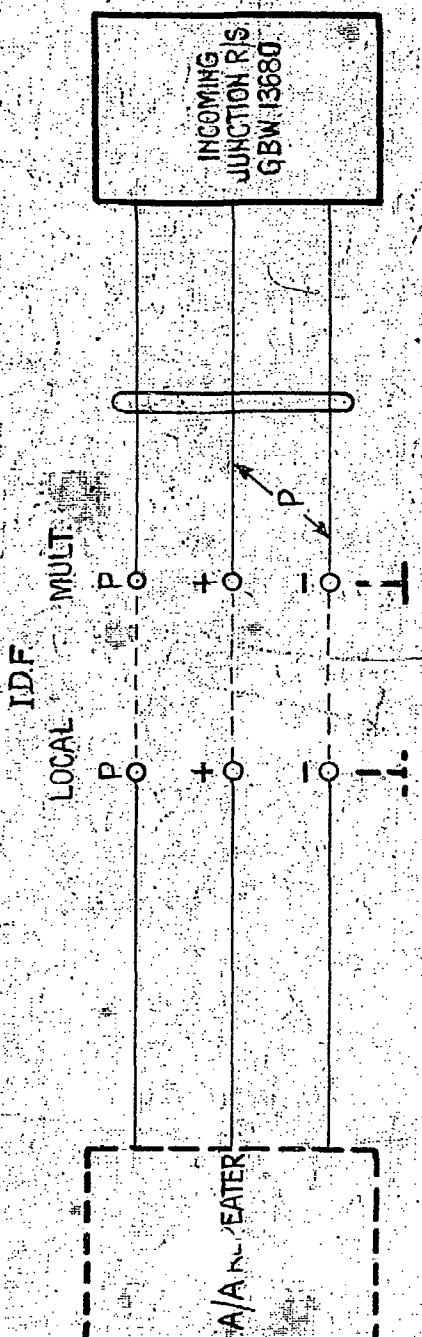
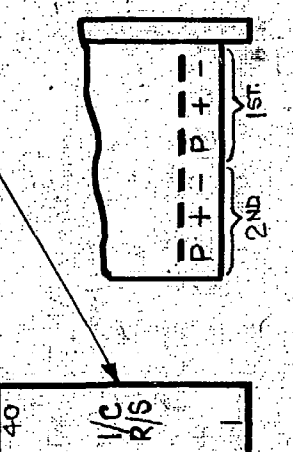


FOR USE WHEN GBW 13680 IS USED TO PROVIDE TEMPORARY MULTI-PARTY LINE SERVICE IN AN AMX OR CAX.



TYPICAL MARKING ON I.D.F.



				INCOMING JUNCTION RELAY SET MULTI-PARTY LINE UNIT UAX NZ13R			
				(1348)	1	24.2.58	abl
AMENDMENT PARTICULARS				ISSUE	DATE	APPR	IC
N.Z.P.O.							GBX. 13680