

FIG. A.

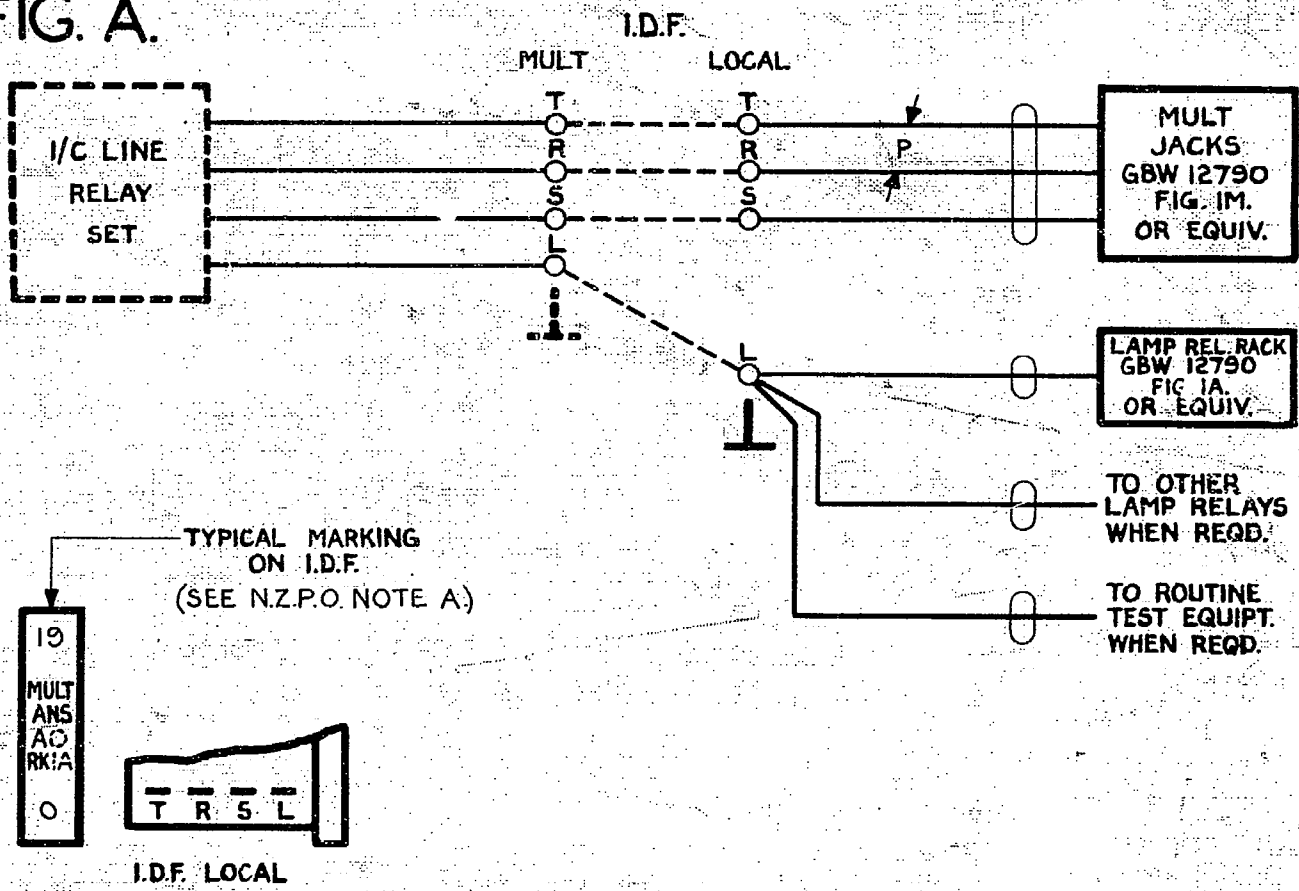
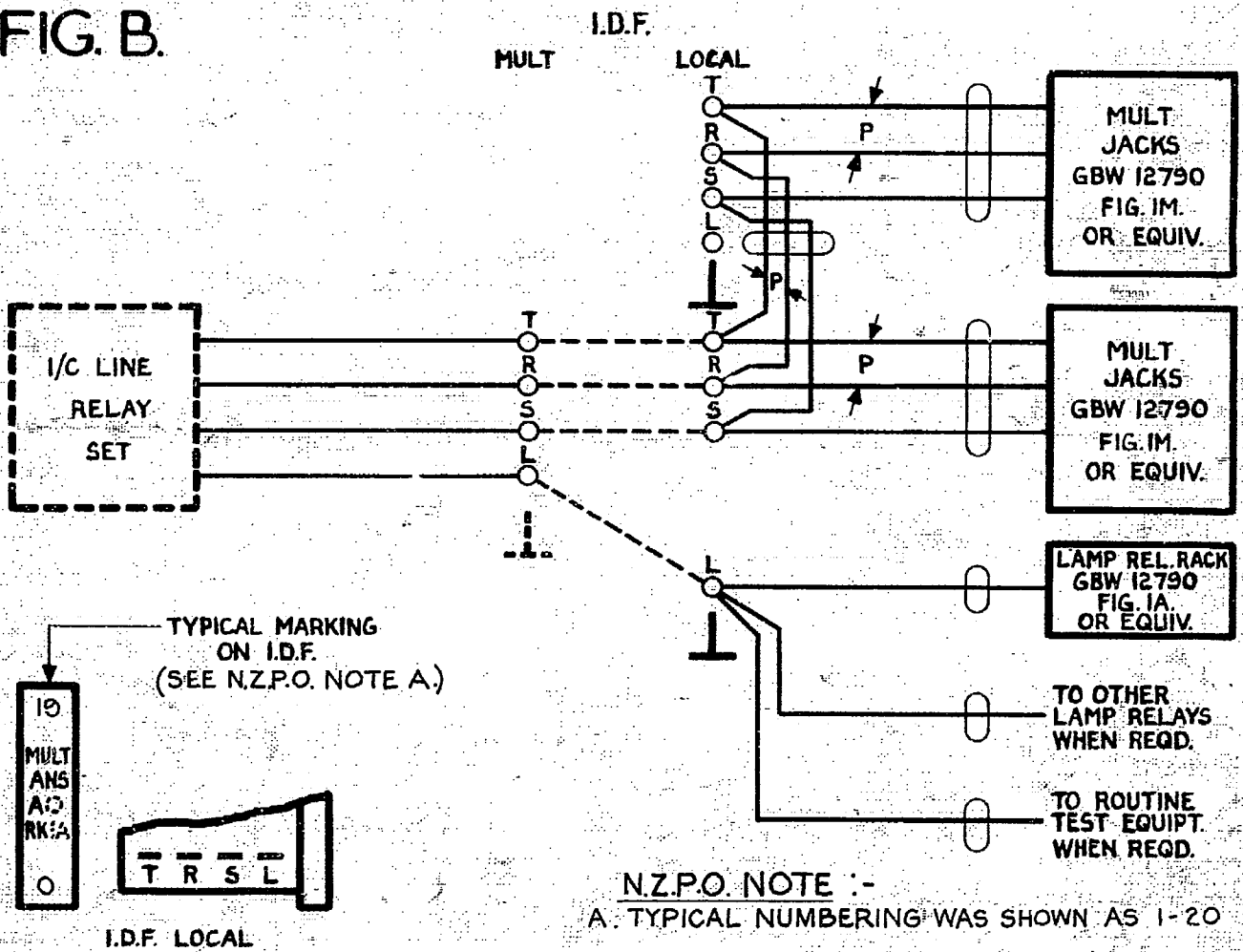


FIG. B.



N.Z.P.O. NOTE :-
A. TYPICAL NUMBERING WAS SHOWN AS 1-20

| | | | | | | |
|-----------------------|---------|----|------------|-----------------|------------------------------------|----------------|
| | | | | | MULTIPLE ANSWERING JACKS 2000 TYPE | |
| N.Z.P.O. NOTE A ADDED | (8205) | 3A | 18.11.71 | BS-H | | |
| SHEET 3 ADDED | (21936) | 3 | 10.4.70 | RW | | |
| SHEET 2 ADDED | (69843) | 2 | 24.1.64 | DDH | | |
| | (31954) | 1 | 4.5.54 | UN | | |
| AMENDMENT PARTICULARS | | | ISSUE DATE | APP? | REF:- | SIZE F |
| N.Z.P.O. | | | | DRAWN B.E.S. | CHECKED EJD 29/11 | WIRING CIRCUIT |
| GBX 12790 | | | | | | SHT 1 OF 3 |

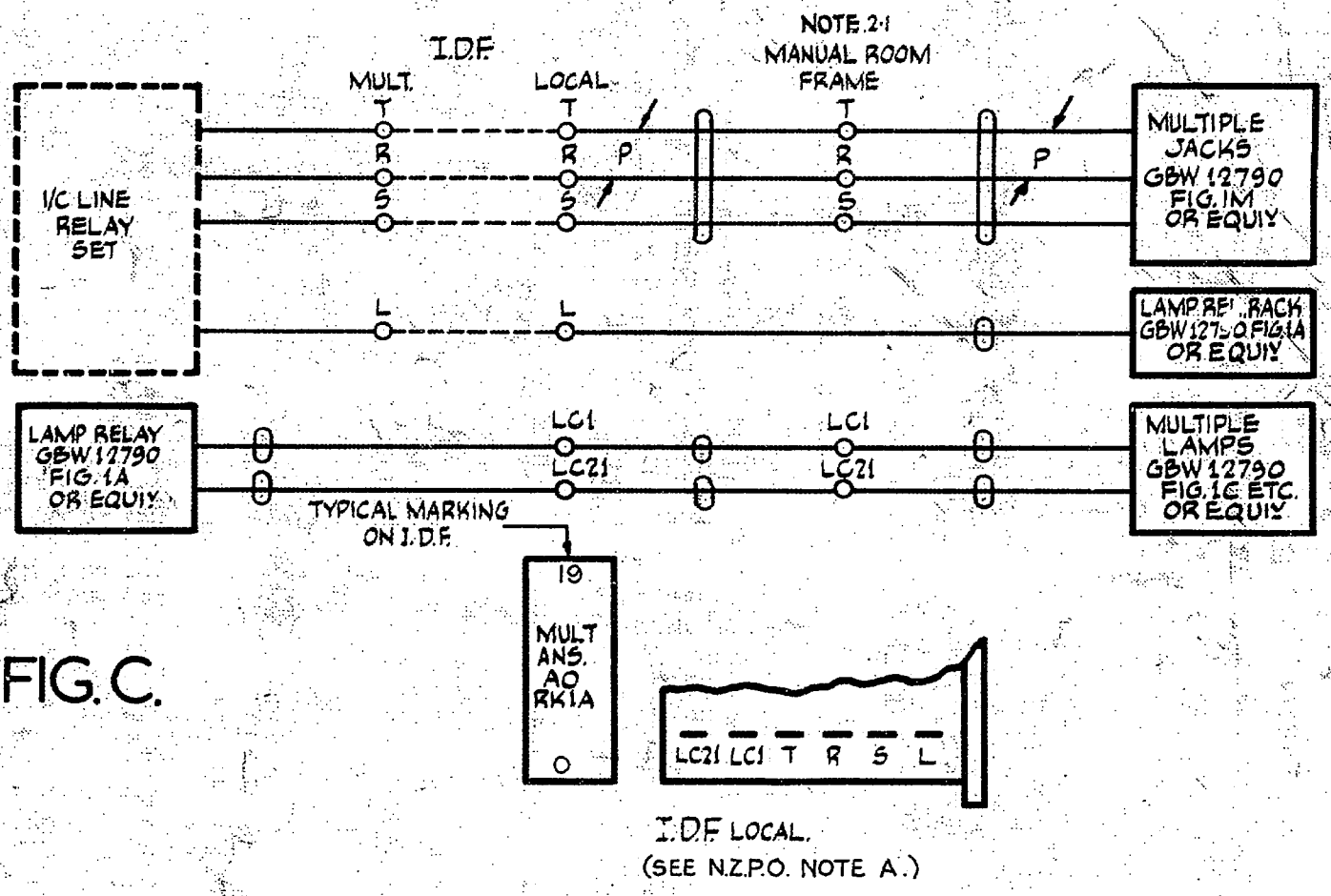


FIG. C.

NOTES:-

2.1. THE MANUAL ROOM FRAME AND ASSOCIATED TERMINAL STRIPS ARE SUPPLIED BY THE NZ.P.O.

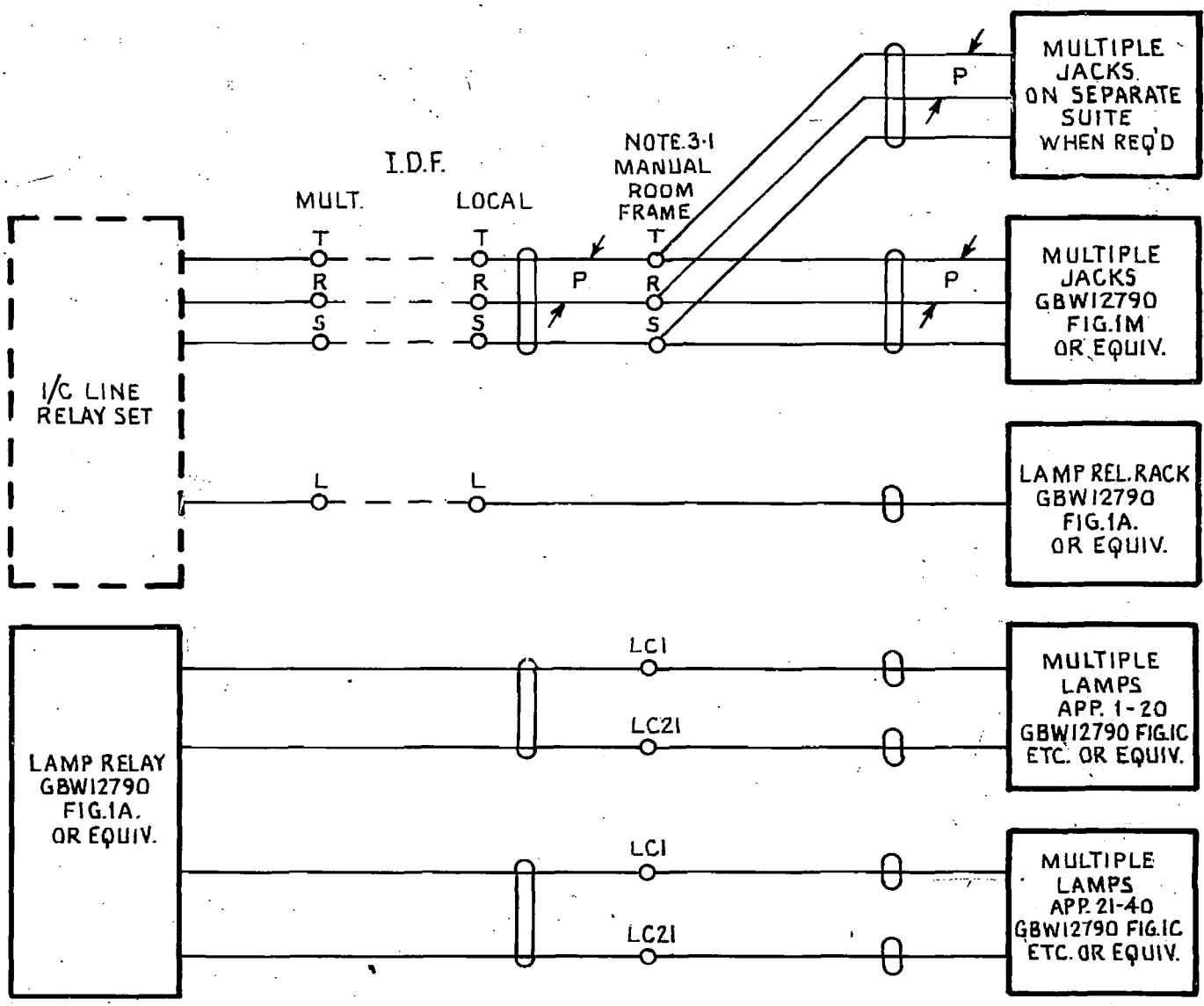
N.Z.P.O. NOTE :-

A. TYPICAL NUMBERING WAS SHOWN AS 1-20

| | | | | | |
|-----------------------|---------|----|------------------------------|--|------------------|
| | | | | MULTIPLE ANSWERING JACKS 2000 TYPE. | |
| NZ.P.O. NOTE A ADDED. | (8205) | 3A | 18.11.71 | BS.H. | |
| SHEET 3 ADDED | (21936) | 3 | 10.4.70 | RW | |
| | (69843) | 2. | 24.1.68 | OBH | |
| AMENDMENT PARTICULARS | | | ISSUE | DATE | APP. |
| | | | | | SIZE F H |
| N.Z.P.O. | | | DRAWN CHECKED WIRING CIRCUIT | | GBX 12790 |
| | | | | | SHEET 2-3 |

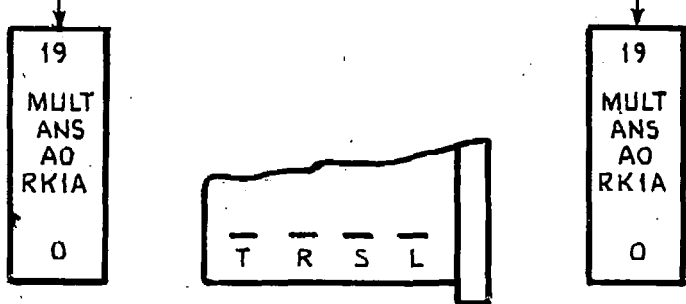
FIG.D.

WALL MOUNTED FRAME SERVING SEPERATE SWITCHBOARD SUITE.

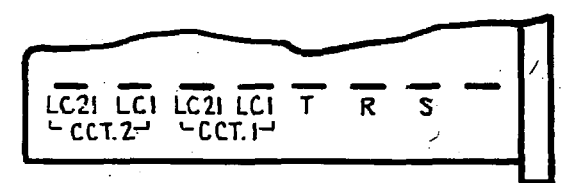


NOTES:-
 3-1 THE MANUAL ROOM FRAME AND ASSOCIATED TERMINAL STRIPS ARE SUPPLIED BY THE N.Z.P.O.

TYPICAL MARKING ON I.D.F.



I.D.F. LOCAL.



MANUAL ROOM FRAME.

| | | | | | | | |
|--|--|--|--|--|----------|-------------|-----------------------------|
| | | | | MULTIPLE ANSWERING JACKS 2000 TYPE. | | | |
| NO CHANGE. SHT 1 & 2 AMENDED (8205) (21936) | | | | 3A | 18-11-71 | B.S.H | |
| | | | | 3. | 10-4-70 | RW | |
| AMENDMENT PARTICULARS | | | | ISSUE | DATE | APPROV | REF |
| | | | | | | | SIZE F SOV. H |
| NZ.P.O. | | | | DRAWN D.J.T. | | CHKD. GH | |
| | | | | WIRING | | CIRCUIT | |
| | | | | GBX¹2790 | | | |
| | | | | SHEET 3-3 | | | |

Ref Ref/Ac/52, 29-12-69