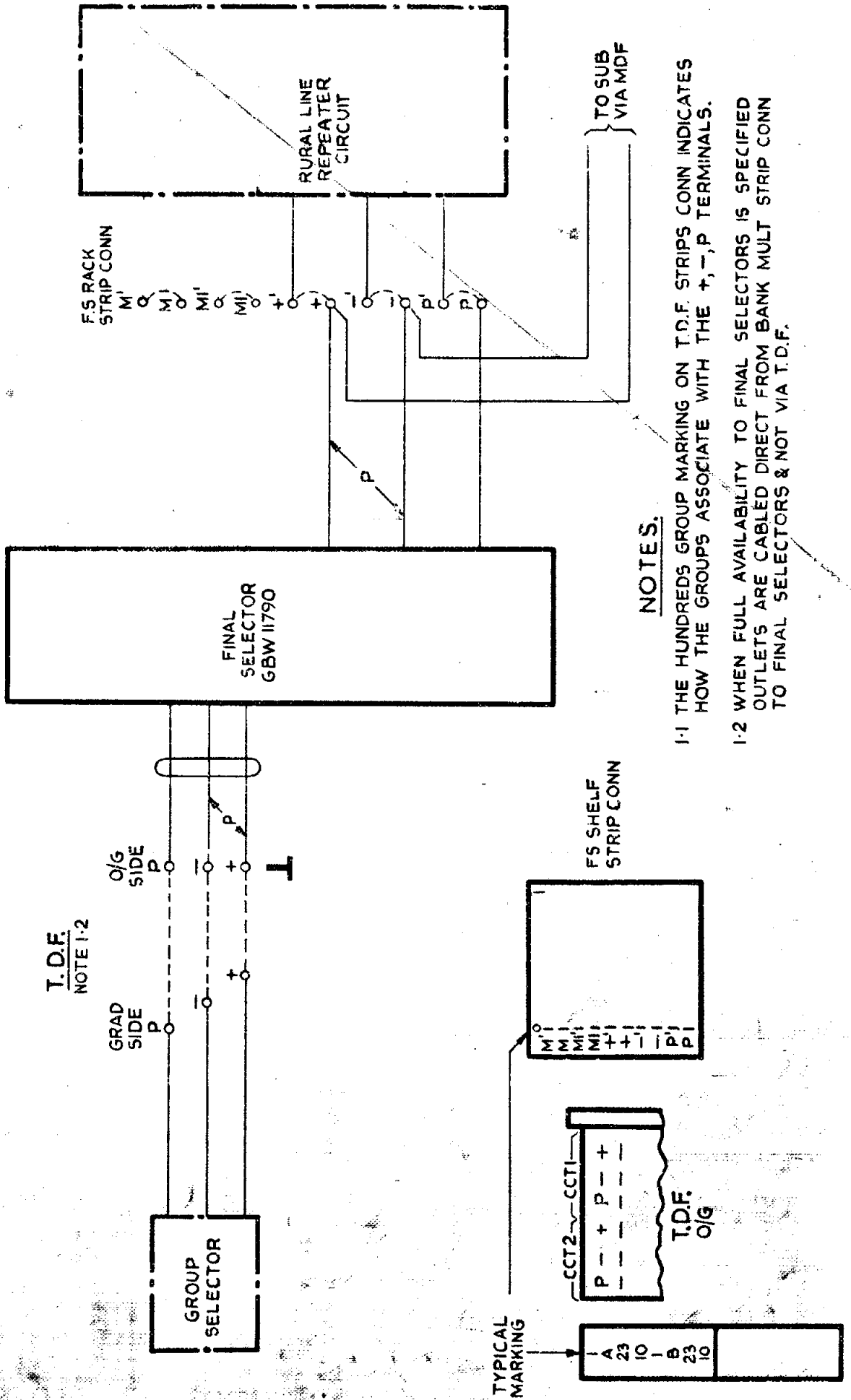


FIG.A. OUTLETS CONNECTED VIA FINAL SELECTOR RACK STRIP CONN.



NOTES:

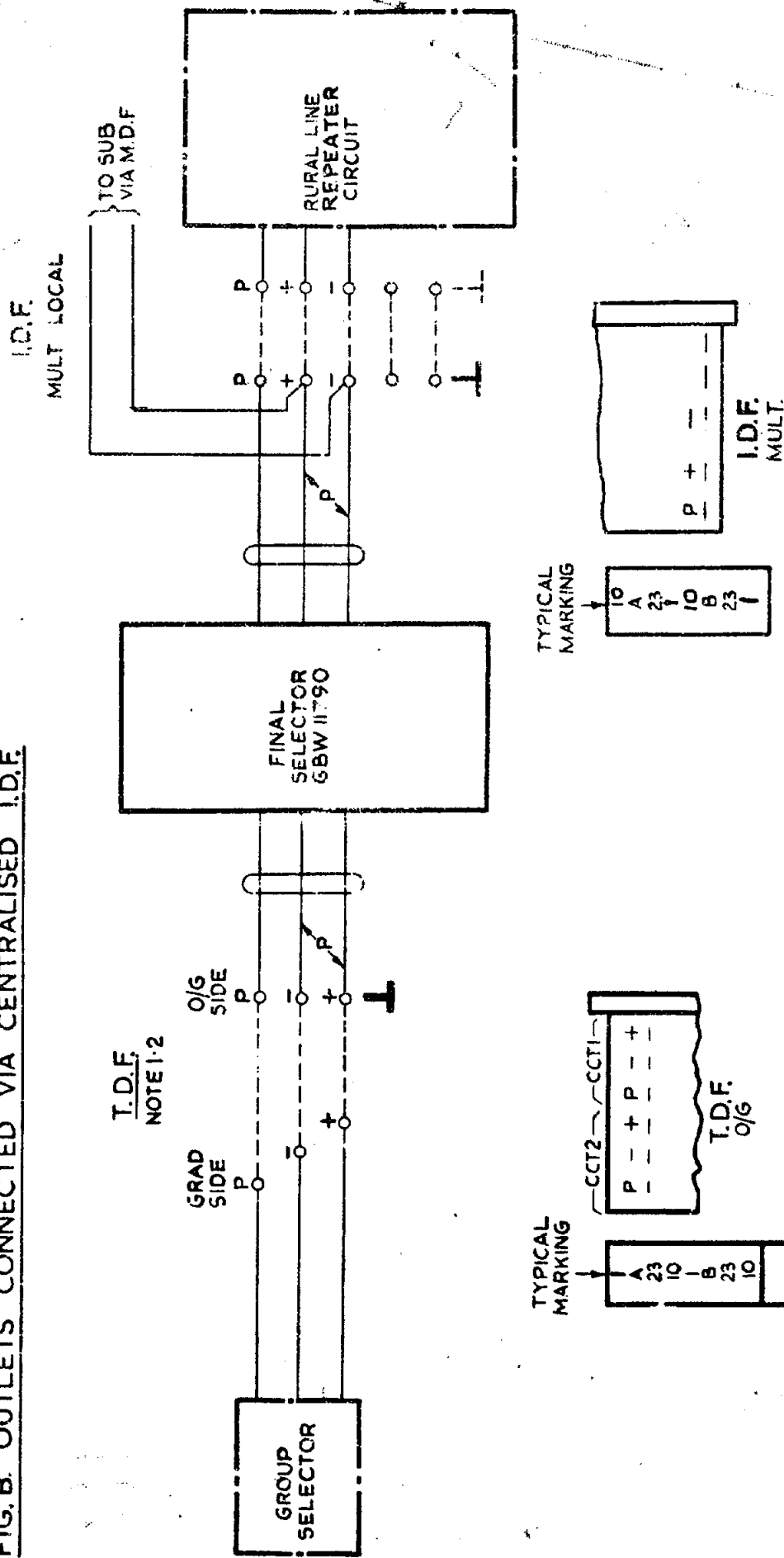
1-1 THE HUNDREDS GROUP MARKING ON T.D.F. STRIPS CONN INDICATES HOW THE GROUPS ASSOCIATE WITH THE +, -, P TERMINALS.

1-2 WHEN FULL AVAILABILITY TO FINAL SELECTORS IS SPECIFIED OUTLETS ARE CABLED DIRECT FROM BANK MULT STRIP CONN TO FINAL SELECTORS & NOT VIA T.D.F.

				100 LINE RURAL FINAL SELECTORS	
				ORDINARY	
				POSITIVE BATTERY METERING	
				2000 TYPE	
AMENDMENT PARTICULARS		ISSUE	DATE	APPD.	
N.Z.P.O.		DRAWN	CHECKED	WIRED	ENGRS
		D.N.	F.J.G.		AMR
				GBX 11790	
				SH 4	

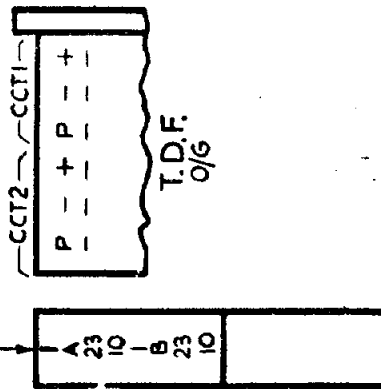
DIAGRAM WAS 3 SHEETS.	(55960)	4	29.3.62	AMR
DIAGRAM WAS 2 SHEETS.	(77701)	3	1.8.58	AMR
ISSUE ADVANCED ONLY	(30963)	2	2.8.54	AMR

FIG. B. OUTLETS CONNECTED VIA CENTRALISED I.D.F.

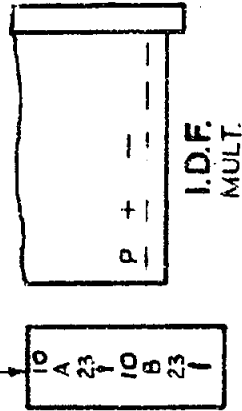


T.D.F.
NOTE 1-2

TYPICAL MARKING



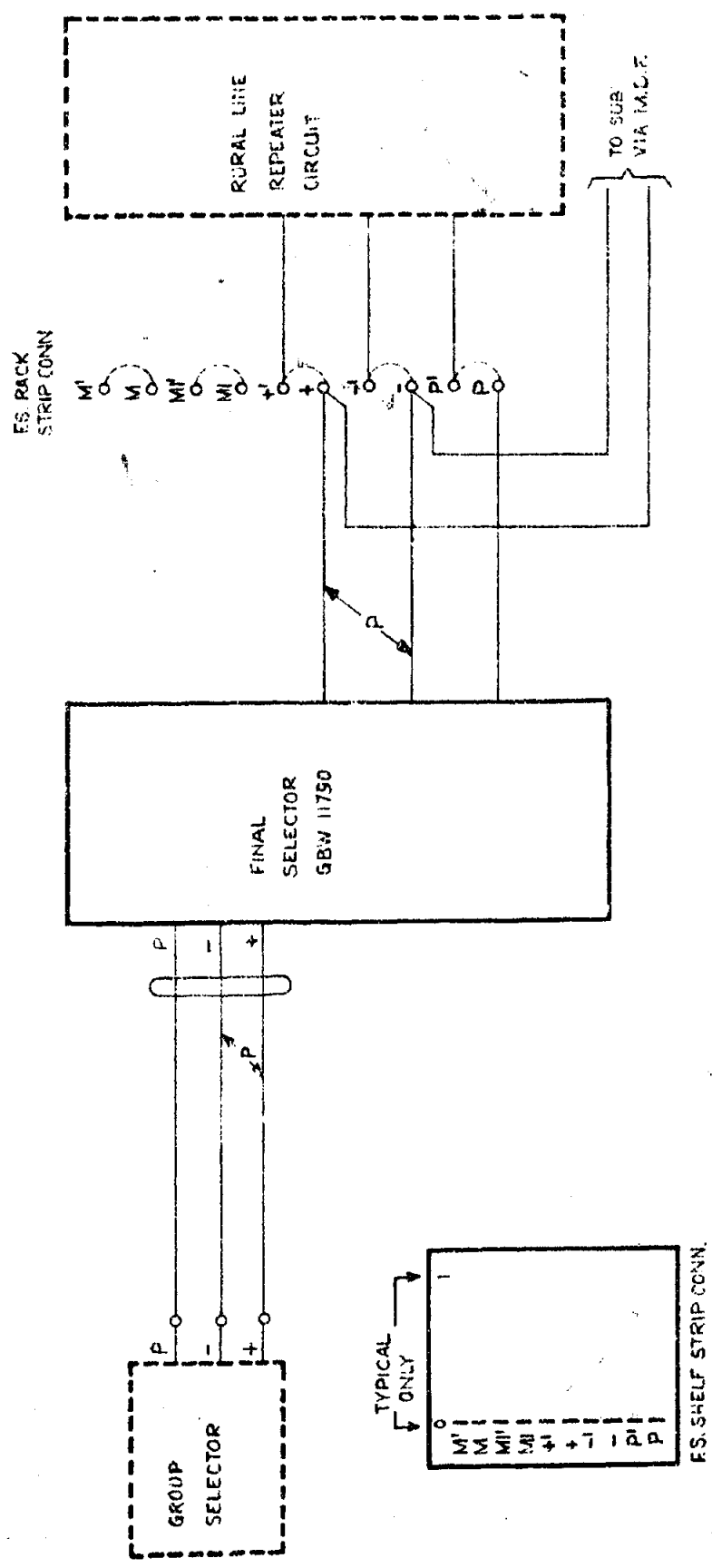
TYPICAL MARKING



					100 LINE RURAL FINAL SELECTORS ORDINARY POSITIVE BATTERY METERING 2000 TYPE	
DIAGRAM WAS 3 SHEETS.	(55960)	4	29.3.62	<i>AWB</i>		
DIAGRAM WAS 2 SHEETS.	(77701)	3	1.8.58	<i>EX</i>		
MINOR CORRECTIONS	(30963)	2	2.8.54	<i>CLM</i>		
AMENDMENT PARTICULARS		ISSUE DATE	APPD.			S
					GBX 11790	
N.Z.P.O.	DRAWN D.M.	CHECKED F.J.C.	WIRED	ENGINEER <i>AWB</i>	SH 2-4	

FIG. C OUTLETS CONNECTED VIA FINAL SELECTOR RACK STRIP CONN.

CABLING OF OUTLETS BETWEEN PEN-ULTIMATE G.S.
BANK MULT. TERM. STRIPS AND RURAL F.S. W/O T.D.F.

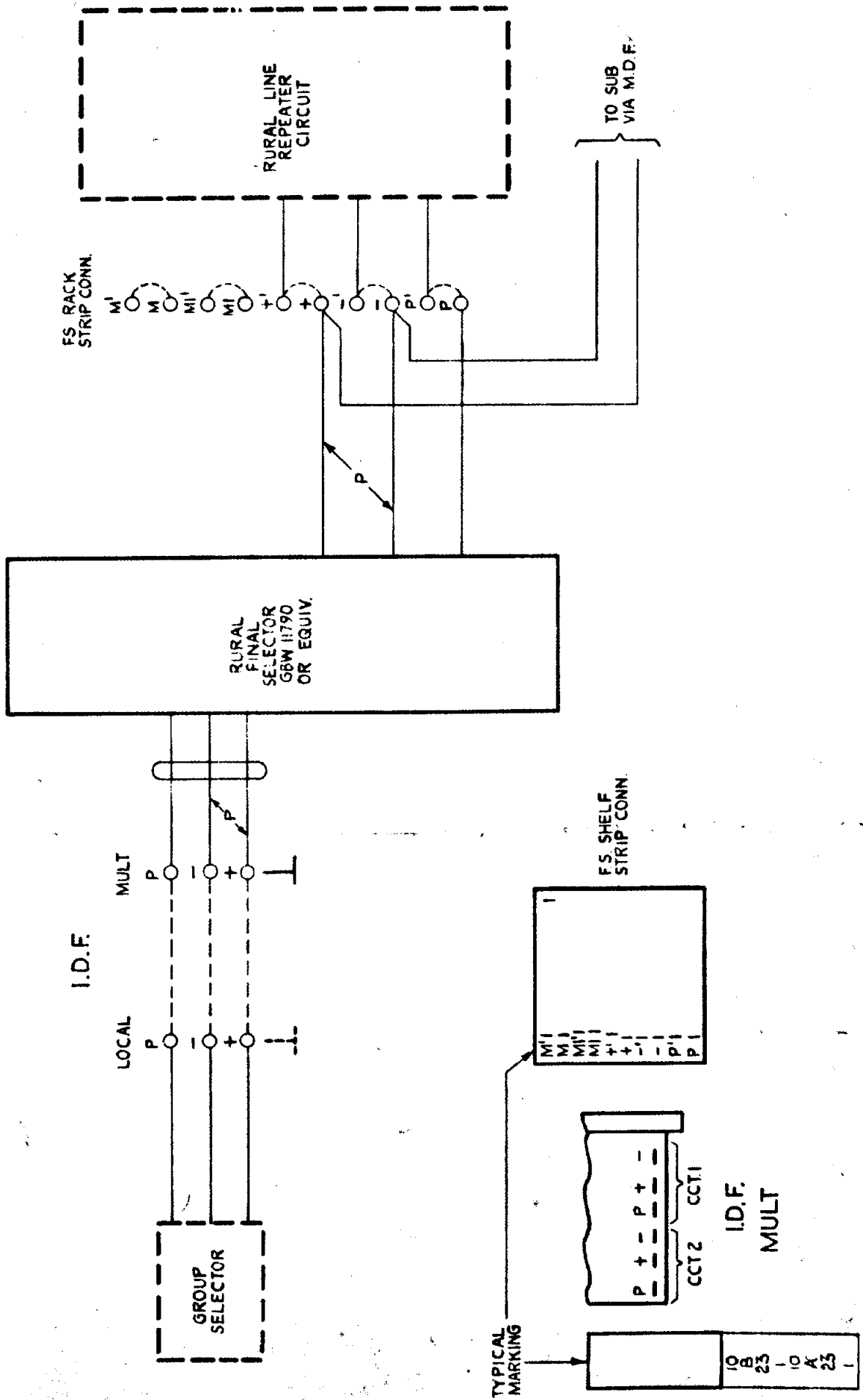


NOTES.

- 3-1 EXCEPT WHEN OTHERWISE REGD OR AS LIMITED BY THE SIZE OF CABLE PROVIDED, ALL OUTLETS SHALL BE COMPLETELY WIRED BETWEEN THE GROUP SELECTOR BANK MULTIPLE TERMINAL STRIPS AND THE FINAL SELR SHELF JACKS.
- 3-2 WHERE GROUP SELECTOR OUTLETS ARE NOT CABLED THE 'P' TERMINALS SHALL BE 'COMMONED' ON THE BANK MULTIPLE TERMINAL STRIPS AND CONNECTED TO EARTH VIA THE SHELF MISC. TERMINAL STRIP.
- 3-3 STRAPPING ON F.S. SHELF JACKS SHALL BE EFFECTED IN ACCORDANCE WITH THE NOTES ON THE RELEVANT GBU DIAGRAM.
- 3-4 FOR DIRECT CABLING TO F.S. GROUPS REFER TO GBW 14850.

				100 LINE RURAL FINAL SELECTORS ORDINARY POSITIVE BATTERY METERING 2000 TYPE	
DIAGRAM WAS 3 SHEETS	(55960)	4	29.3.62	<i>MB</i>	
	(77701)	3	1.8.58	<i>dy</i>	
AMENDMENT PARTICULARS	ISSUE	DATE	APPD		
N.Z.P.O.	DRAWN	CHECKED	WIRING	CIRCUIT	
	G.A.	<i>79.0</i>		<i>79.0</i>	
GBX 11790					SHT. 3-4

FIG. D. OUTLETS CONNECTED VIA FINAL SELECTOR RACK STRIP CONN.
INCOMING FROM GRADED GROUP SELECTOR VIA I.D.F.



					100 LINE RURAL FINAL SELECTORS ORDINARY POSITIVE BATTERY METERING 2000 TYPE	
(55960)			4	29362		
AMENDMENT PARTICULARS			ISSUE	DATE	APP	REF
					S	
					GBX 11790	
N.Z.P.O.		DRAWN	CHECKED	WIRING	CIRCUIT	
		720	720		PSH	
						SHEET 4-4