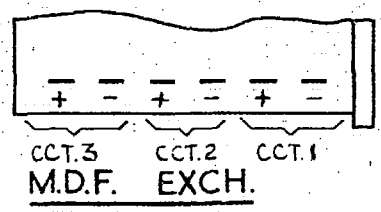


TYPICAL MARKING

60
1/C
A.C.
No 2
R/S
1A
1



TYPICAL MARKING

20
1/C
A.C.
No 2
R/S
1A
1

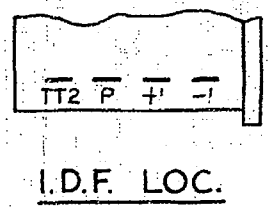
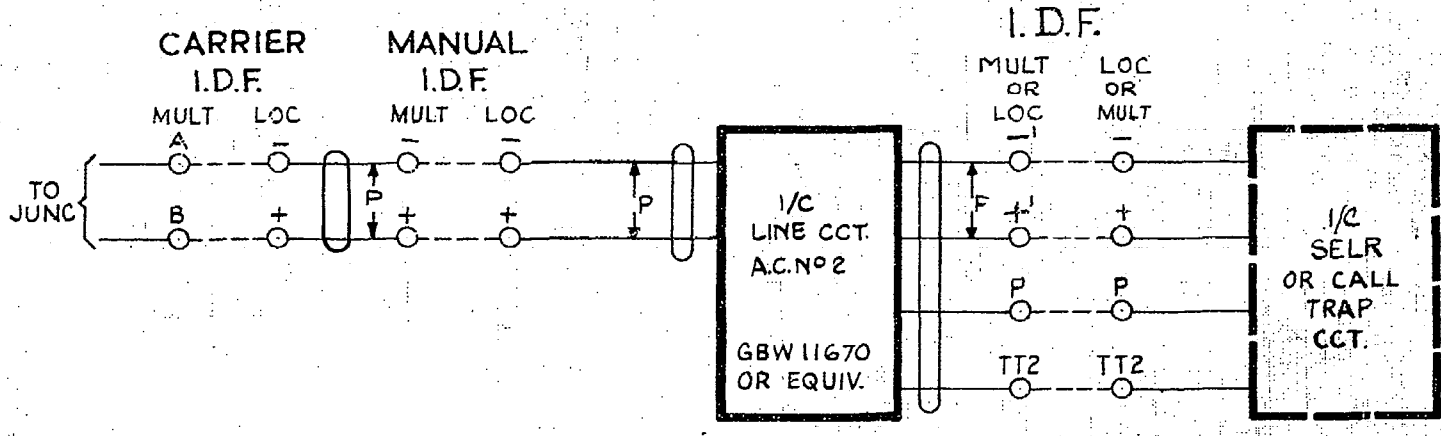
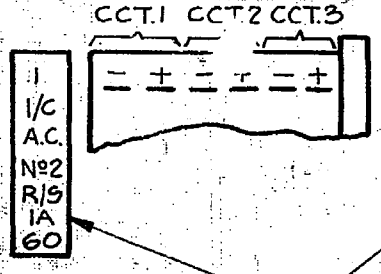


FIG. A.

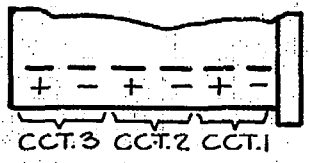


CARRIER I.D.F. LOC.

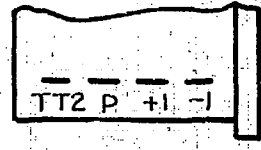


TYPICAL MARKING

60
1/C
A.C.
No 2
R/S
1A
1



20
1/C
A.C.
No 2
R/S
1A
1



TYPICAL MARKINGS

MANUAL I.D.F. LOC.

I.D.F. LOC. OR MULT

FIG. B.

					1/C LINE CIRCUIT	
					N.Z. SIGNALLING SYSTEM	
					A.C. No 2.	
AMENDMENT PARTICULARS		ISSUE	DATE	APPD	REF:	S
N.Z. P.O.		DRAWN	CHECKED	WIRING	CIRCUIT	
		BA.	BA.		880	
					GBX 11670 11671	
					SHEET 1-2	

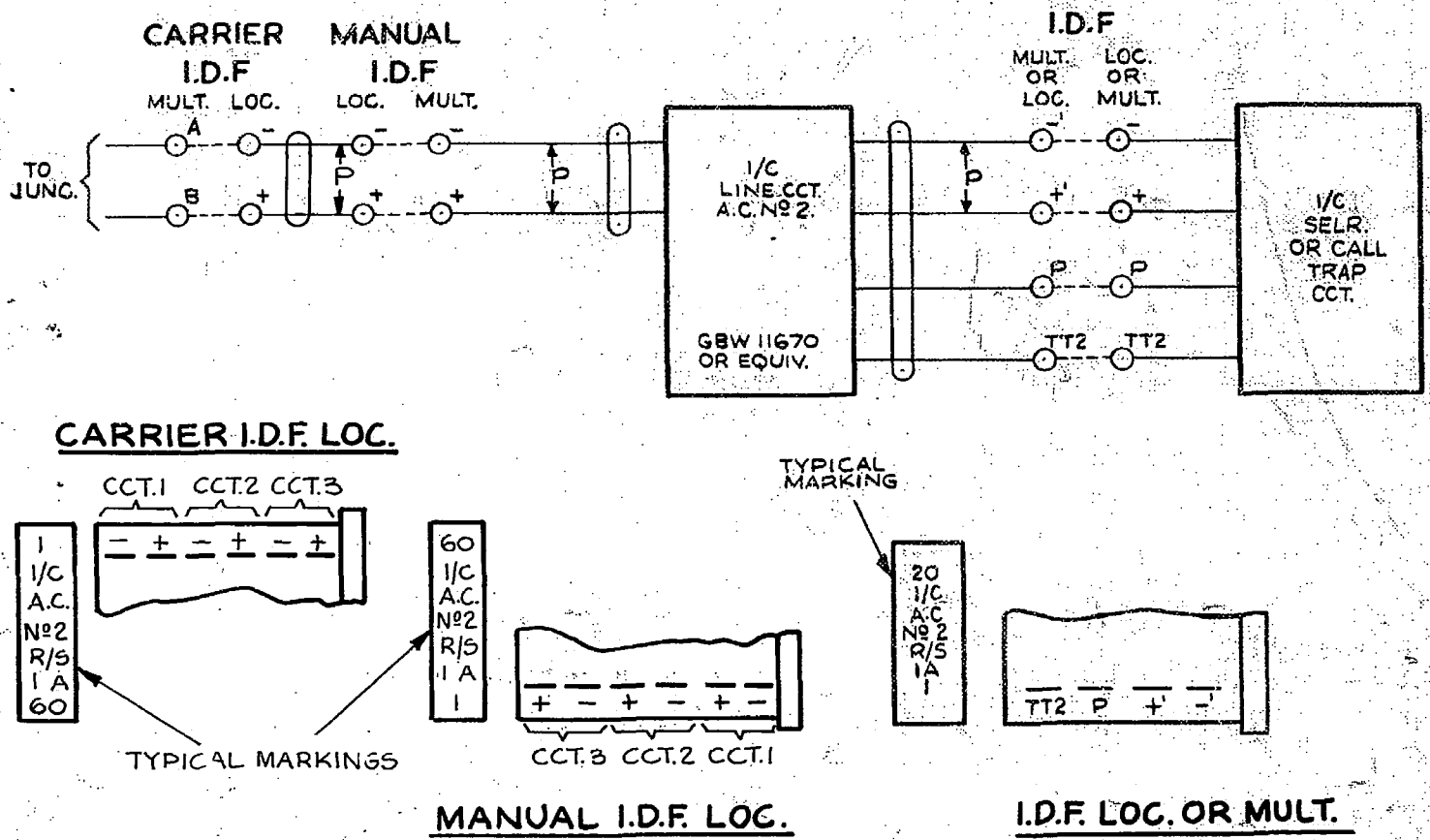


FIG. C.

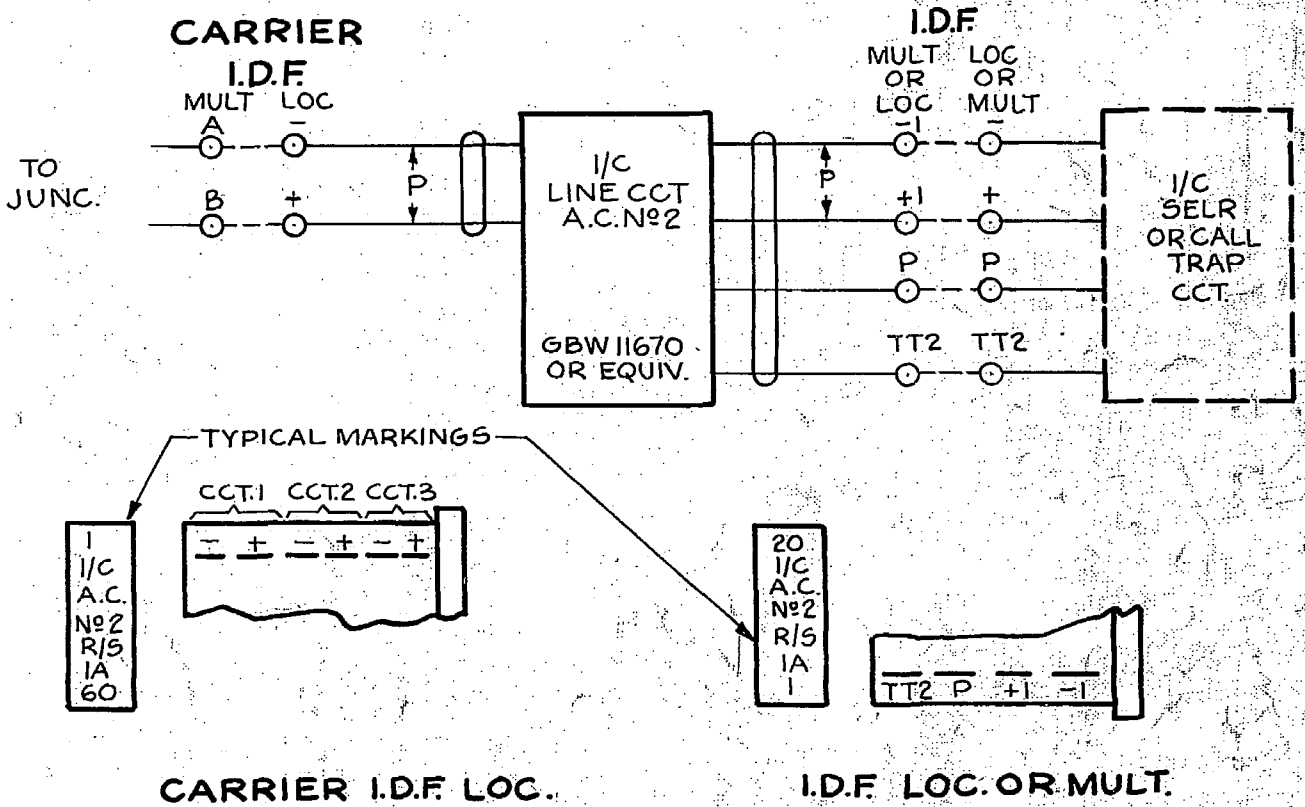


FIG. D.

				1/C LINE CIRCUIT	
				N.Z. SIGNALLING SYSTEM	
				AC No 2	
FIG. C. CARRIER I.D.F. BLOCK VIEW ADDED.		4	8-1070	R.W.	
FIG. D. CARR. I.D.F. BLOCK VIEW INVERTED (13736)		3	8-1070	R.W.	
FIG. D. ADDED.		(13736)	2	8-5-68	DDH
		(77739)			
AMENDMENT PARTICULARS		ISSUE	DATE	APP	REF -
G.P.O. APPROVED AS STANDARD					
N.Z.P.O.		DRAWN	CHECKED	WIRING	CIRCUIT
		M.A.A.	G. A.		
				GBX 11670 11671	
				SHEET 2-2	