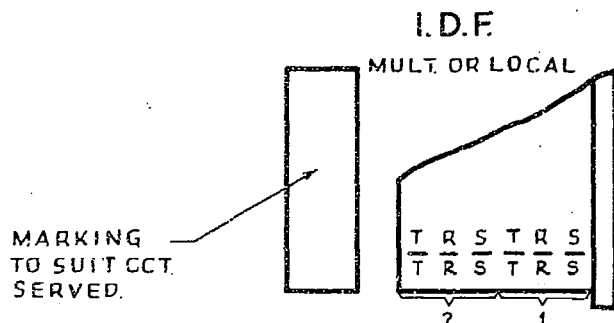
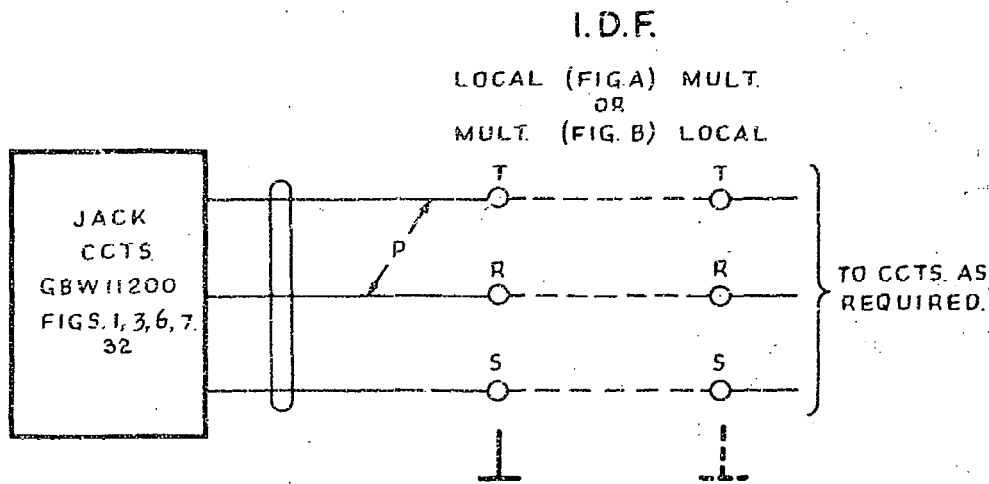
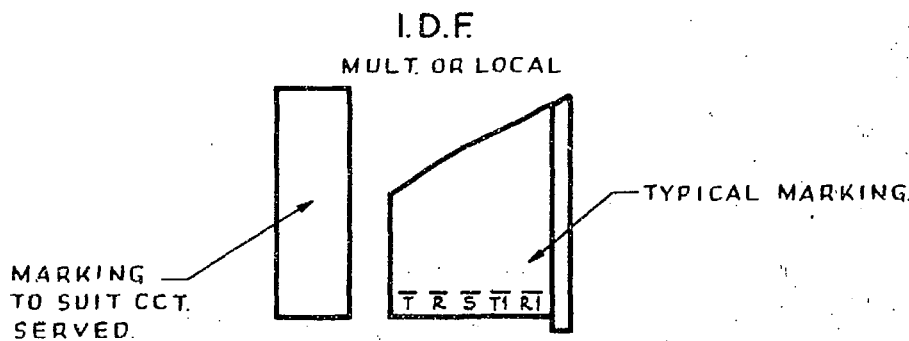
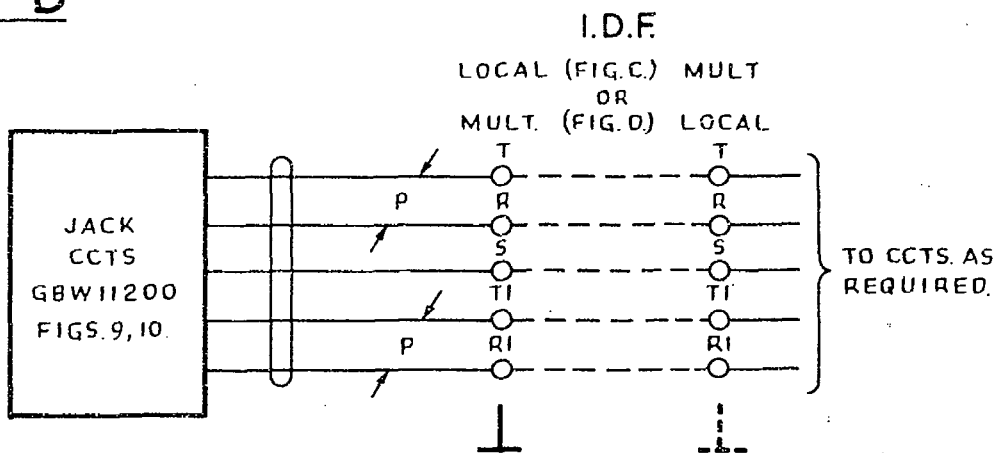


FIGS. A-B



FIGS. C-D

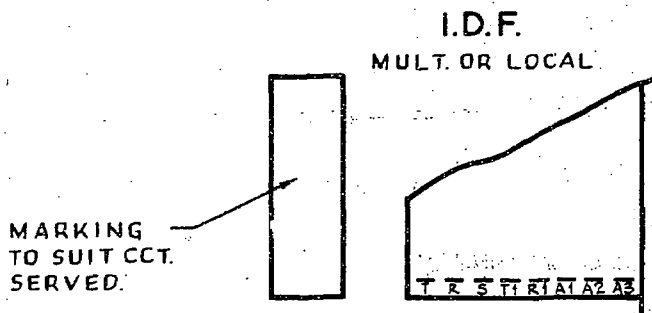
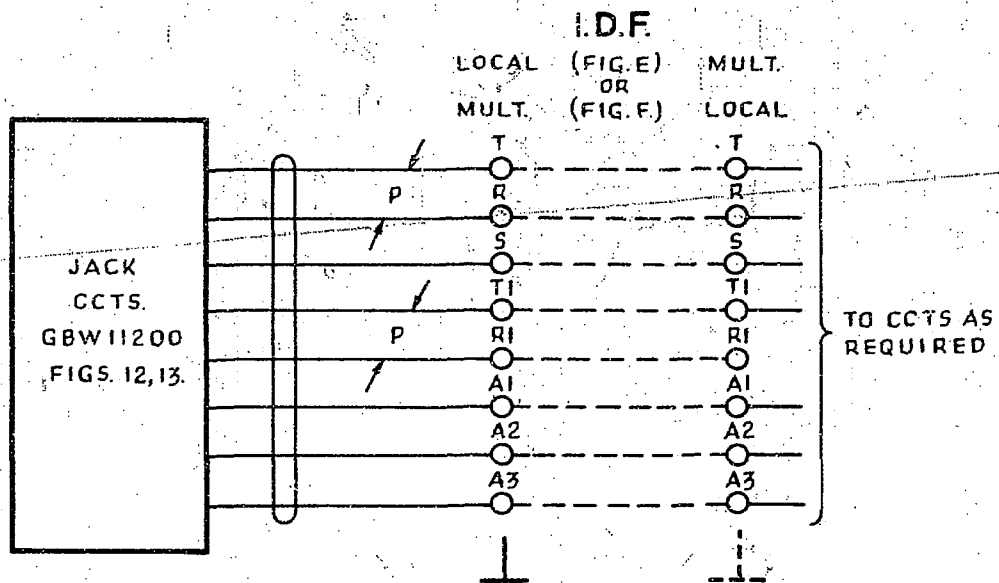


REF TO FIG 32 ADDED (70887)	11	15-1-63	DBX
NO CHANGE. ISSUE ADVANCED ONLY (42763)	10	24-7-61	DBX
NO CHANGE. ISSUE ADVANCED ONLY (26206)	9	12-3-59	DBX
WAS SHEET 1-6 (68786)	8	29-4-57	DBX
NO CHANGE. ISSUE ADVANCED ONLY (86630)	15	21-3-68	DBX
NO CHANGE. ISSUE ADVANCED ONLY (81738)	14	27-11-57	DBX
NO CHANGE. ISSUE ADVANCED ONLY (46460)	13	25-8-66	DBX
WAS SHEET 1-7 (47364)	12	19-2-65	DBX

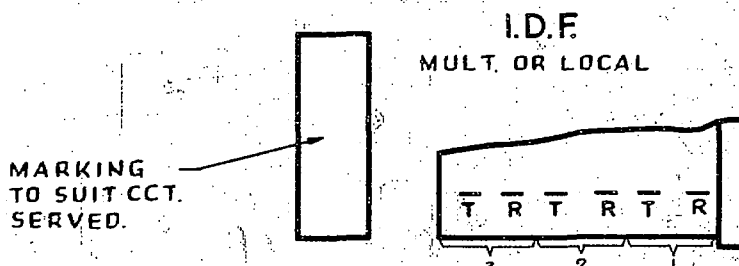
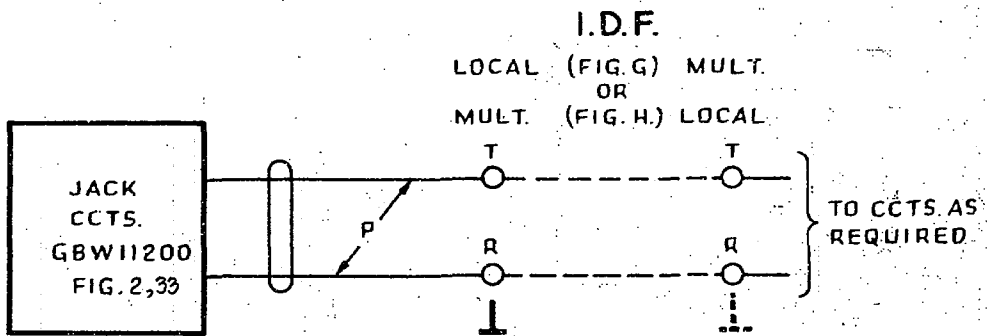
**MISCELLANEOUS JACK
CIRCUITS & MISCELLANEOUS
CIRCUITS BETWEEN FRAMES**

AMENDMENT PARTICULARS	ISSUE DATE	APPD	E
-----------------------	------------	------	---

FIGS. E-F



FIGS. G-H



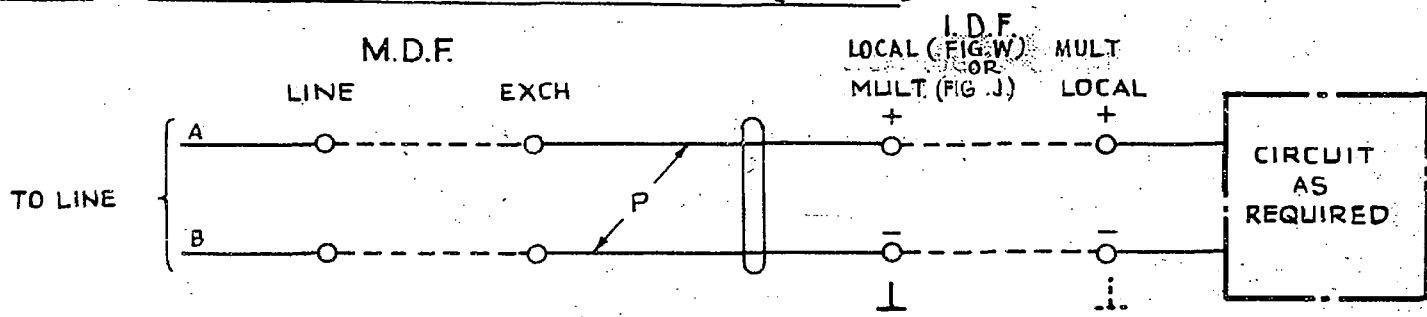
NO CHANGE ISSUE ADVANCED ONLY (42763)	10	24-7-61	<i>WLB.</i>
NO CHANGE ISSUE ADVANCED ONLY (26206)	9	12-3-59	<i>R.</i>
WAS SHEET 2-6 (68786)	8	29-4-57	<i>CS*</i>
NO CHANGE ISSUE ADVANCED ONLY (86630)	15	21-3-68	<i>G.</i>
NO CHANGE ISSUE ADVANCED ONLY (81738)	14	27-11-67	<i>D/B.</i>
NO CHANGE ISSUE ADVANCED ONLY (46460)	13	23-8-66	<i>WLB.</i>
REF. TO FIG. 33 IN FIG. G-H ADDED. WAS SHEET 2-7. (47364)	12	19-2-65	<i>R.</i>
NO CHANGE ISSUE ADVANCED ONLY (70887)	11	15-1-63	<i>D/B.</i>

MISCELLANEOUS JACK CIRCUITS & MISCELLANEOUS CIRCUITS BETWEEN FRAMES

AMENDMENT PARTICULARS		ISSUE	DATE	APP'D	E
N.Z. P.O.		DRAWN	CHECKED	WIRING	CIRCUIT
				GBX 11200	
					SHT. 2-3

FIG. J. CIRCUIT BETWEEN M.D.F. & I.D.F. (MULT)

FIG. W. CIRCUITS BETWEEN M.D.F. & I.D.F. (LOCAL)



TYPICAL MARKING

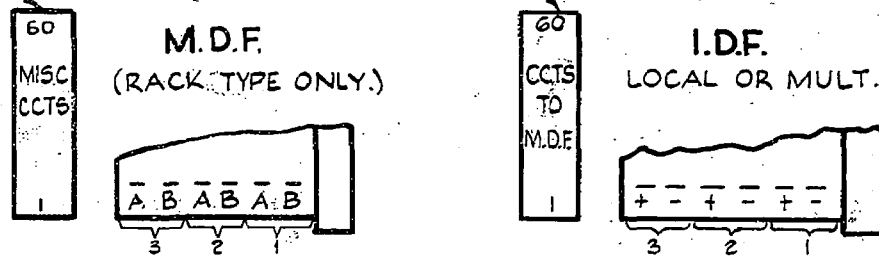
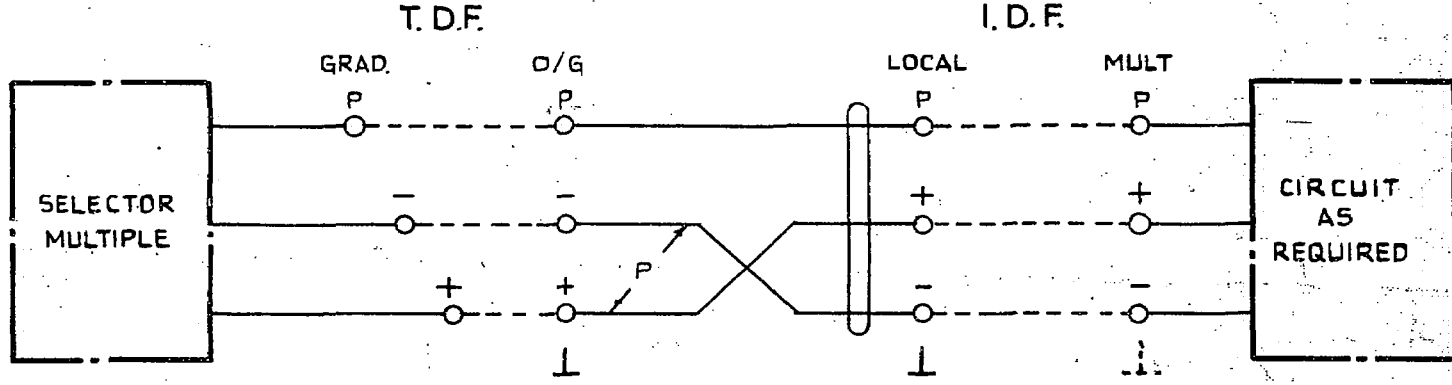
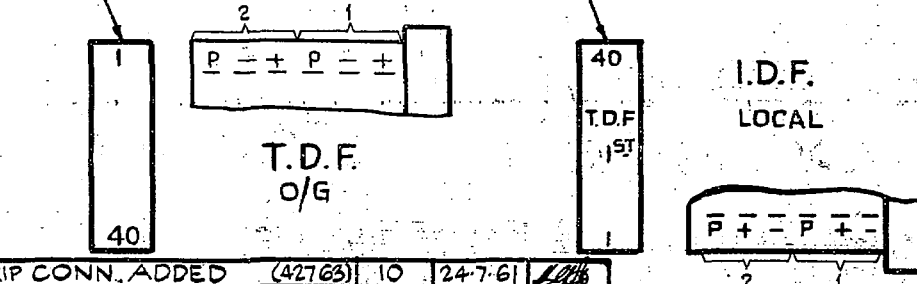


FIG. K. 3 WIRE CIRCUIT BETWEEN T.D.F. & I.D.F. (LOCAL)



TYPICAL MARKING



FIGS J & W M.D.F. STRIP CONN. ADDED (42763)	10	24-7-61	<i>DRX</i>
NO CHANGE. ISSUE ADVANCED ONLY (26206)	9	12-3-59	<i>DRX</i>
WAS SHEET 3-6 (68786)	8	29-4-57	<i>DRX</i>
NO CHANGE. ISSUE ADVANCED ONLY (86630)	15	21-3-68	<i>DRX</i>
NO CHANGE. ISSUE ADVANCED ONLY (81738)	7	27-11-67	<i>DRX</i>
NO CHANGE. ISSUE ADVANCED ONLY (46460)	13	25-8-66	<i>DRX</i>
WAS SHEET 3-7 (47364)	12	19-2-65	<i>DRX</i>
NO CHANGE. ISSUE ADVANCED ONLY (70887)	11	18-1-63	<i>DRX</i>

MISCELLANEOUS JACK
CIRCUITS & MISCELLANEOUS
CIRCUITS BETWEEN FRAMES

AMENDMENT PARTICULARS

ISSUE DATE APP

E

N.Z. P.O.

DRAWN CHECKED WIRING CIRCUIT

GBX 11200

SHT. 3-3

FIG. L. 3 WIRE CIRCUIT BETWEEN T.D.F. & IDF (MULT.)

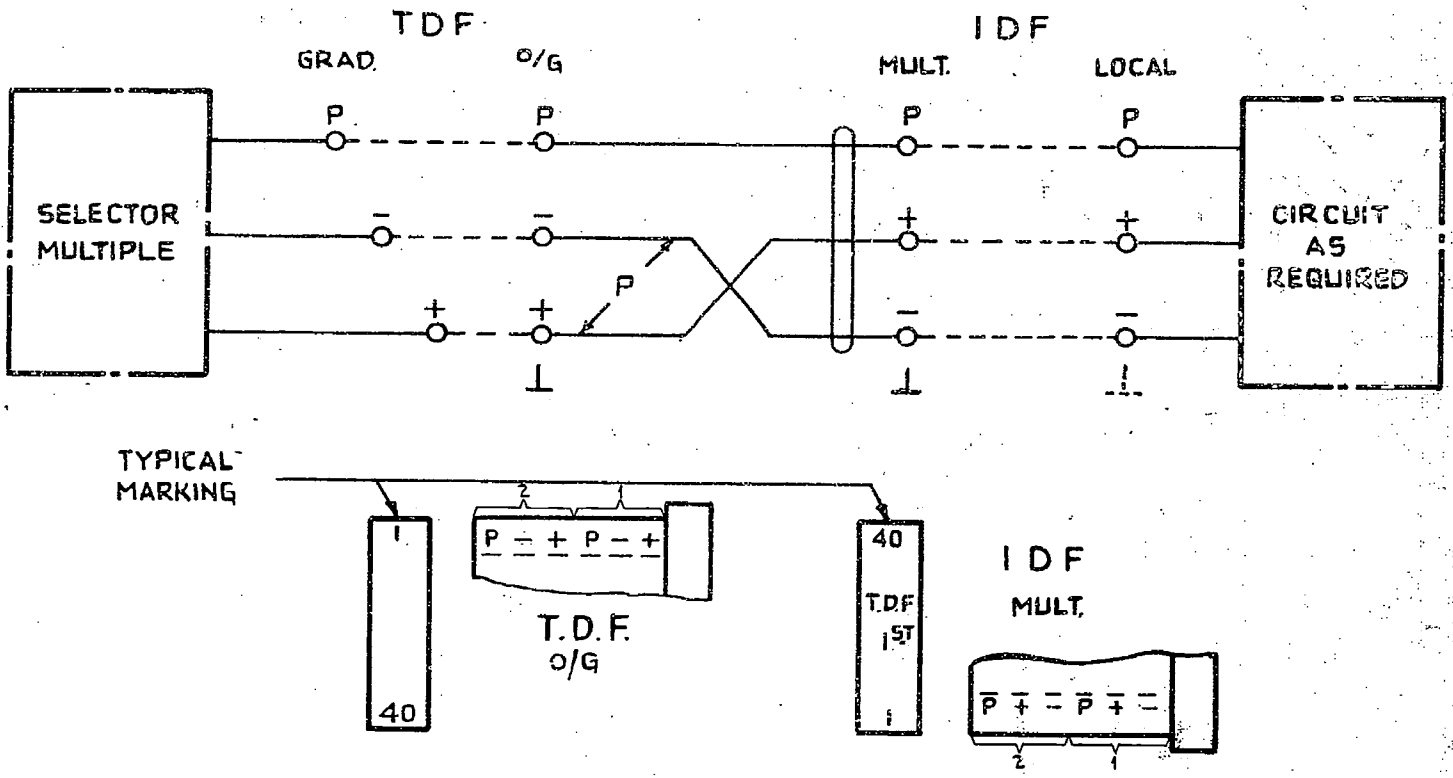


FIG. M. CIRCUIT BETWEEN M.D.F. & T.D.F.

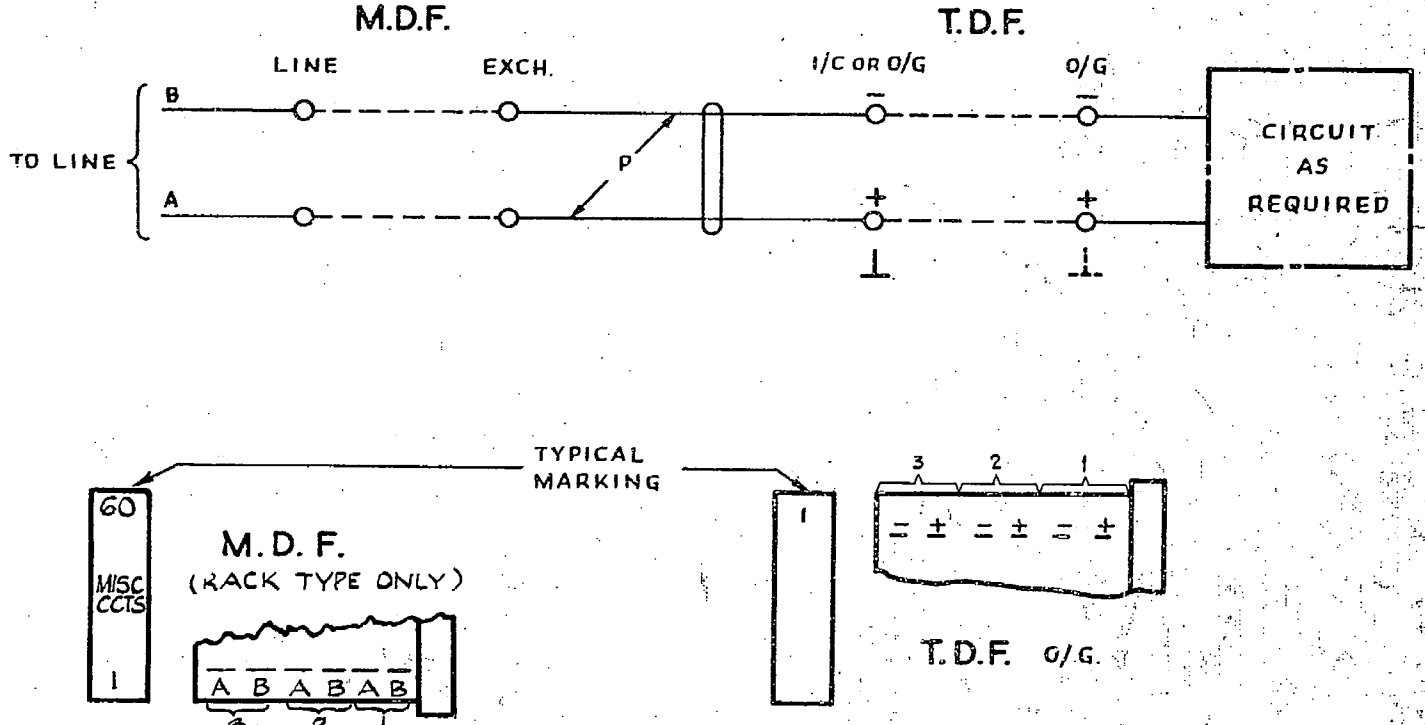


FIG. M. M.D.F. STRIP CONN. ADDED (42763)	10	24-7-61	<i>M.C.B.</i>
NO CHANGE. ISSUE ADVANCED ONLY (26206)	9	12-3-59	<i>OK</i>
WAS SHEET 4-6 (68786)	8	29-4-57	<i>CLM</i>
NO CHANGE, ISSUE ADVANCED ONLY (86630)	15	21-3-68	<i>OK</i>
NO CHANGE, ISSUE ADVANCED ONLY (81738)	14	27-11-67	<i>OK</i>
NO CHANGE ISSUE ADVANCED ONLY (46460)	13	25-8-65	<i>OK</i>
WAS SHEET 4-7 (47364)	12	19-2-65	<i>OK</i>
NO CHANGE ISSUE ADVANCED ONLY (70887)	11	15-1-63	<i>OK</i>

MISCELLANEOUS JACK
CIRCUITS & MISCELLANEOUS
CIRCUITS BETWEEN FRAMES

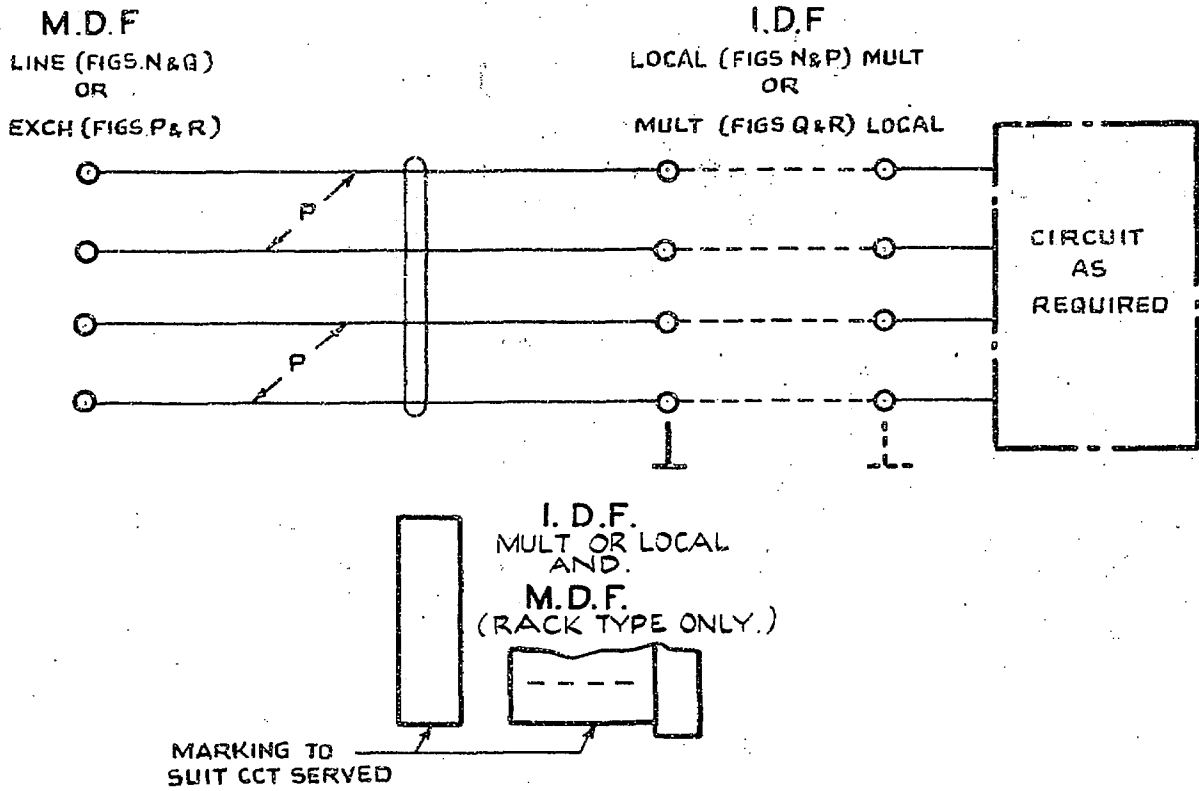
AMENDMENT PARTICULARS		ISSUE	DATE	APPD	E
N.Z. PO.	<i>[Signature]</i>	DRAWN	CHECKED	WIRING	CIRCUIT

GBX 11200

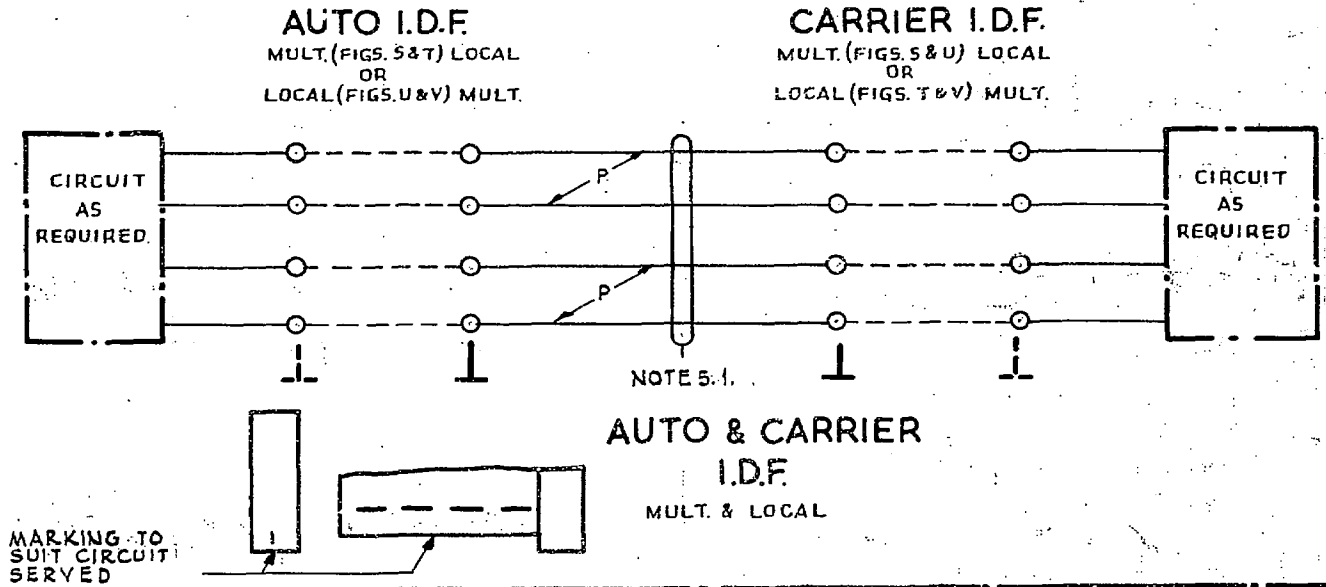
SHT. 4-3

D.O.4

FIGS. N, P, Q, R. 4 WIRE CIRCUITS BETWEEN M.D.F. & I.D.F.



FIGS. S, T, U, V. 4 WIRE CIRCUITS BETWEEN AUTO. I.D.F. & CARRIER I.D.F.



NOTES

5.1. THIS CABLE TO BE MULTIPLE TWIN OR QUAD. IN THE LATTER CASE THE PAIR SIGNS SHOWN DO NOT APPLY.

AMENDMENT PARTICULARS	ISSUE	DATE	APP'D	E
NO CHANGE, ISSUE ADVANCED ONLY (86630)	15	21-3-68	<i>[Signature]</i>	
NO CHANGE ISSUE ADVANCED ONLY (81738)	14	27-11-67	<i>[Signature]</i>	
NO CHANGE ISSUE ADVANCED ONLY (46460)	13	25-8-66	<i>[Signature]</i>	
WAS SHEET 5-7 (47364)	12	10-2-65	<i>[Signature]</i>	
NO CHANGE ISSUE ADVANCED ONLY (70887)	11	15-1-63	<i>[Signature]</i>	

MISCELLANEOUS JACK
CIRCUITS & MISCELLANEOUS
CIRCUITS BETWEEN FRAMES

GBX 11200

SHT 5-8

FIG. X. 3 WIRE CIRCUIT BETWEEN T.D.F. & T.C.F.

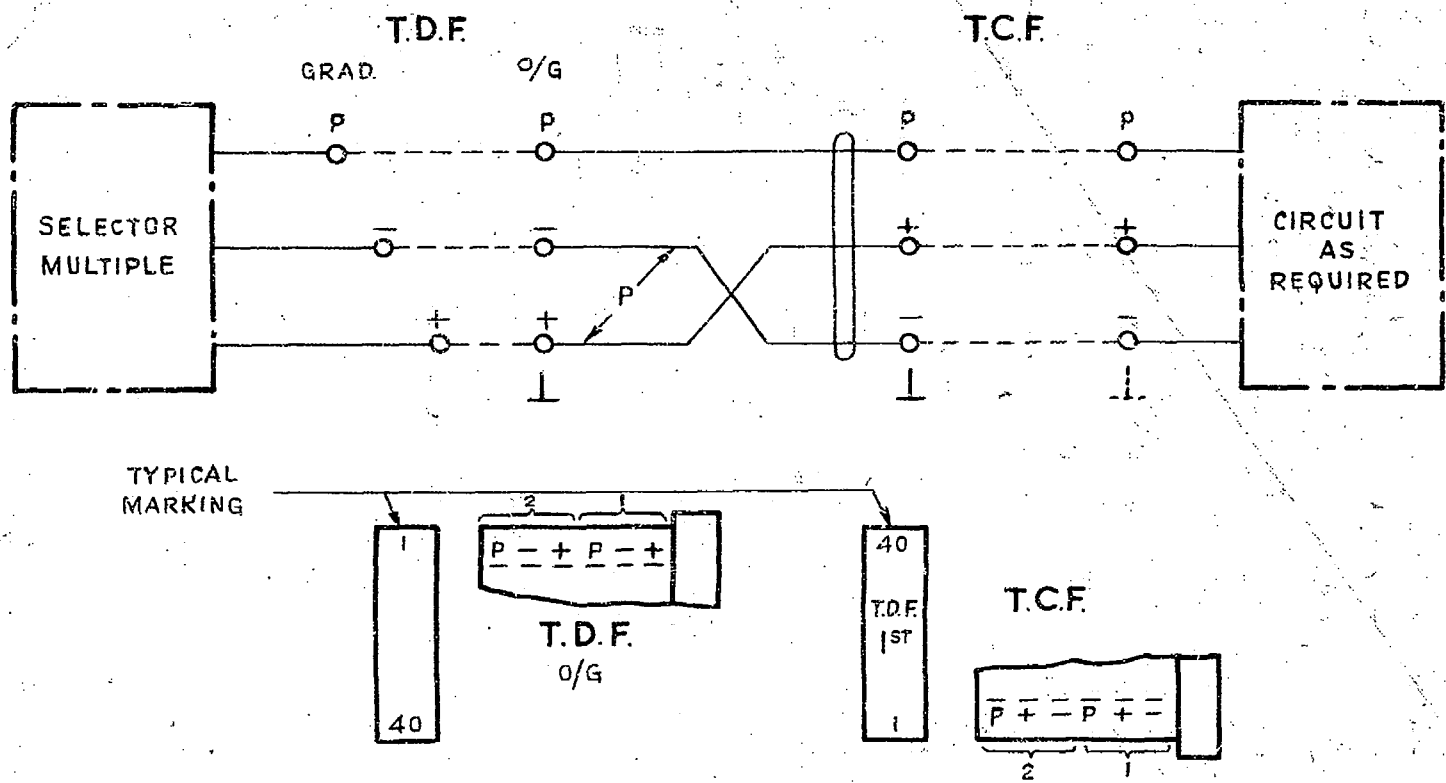
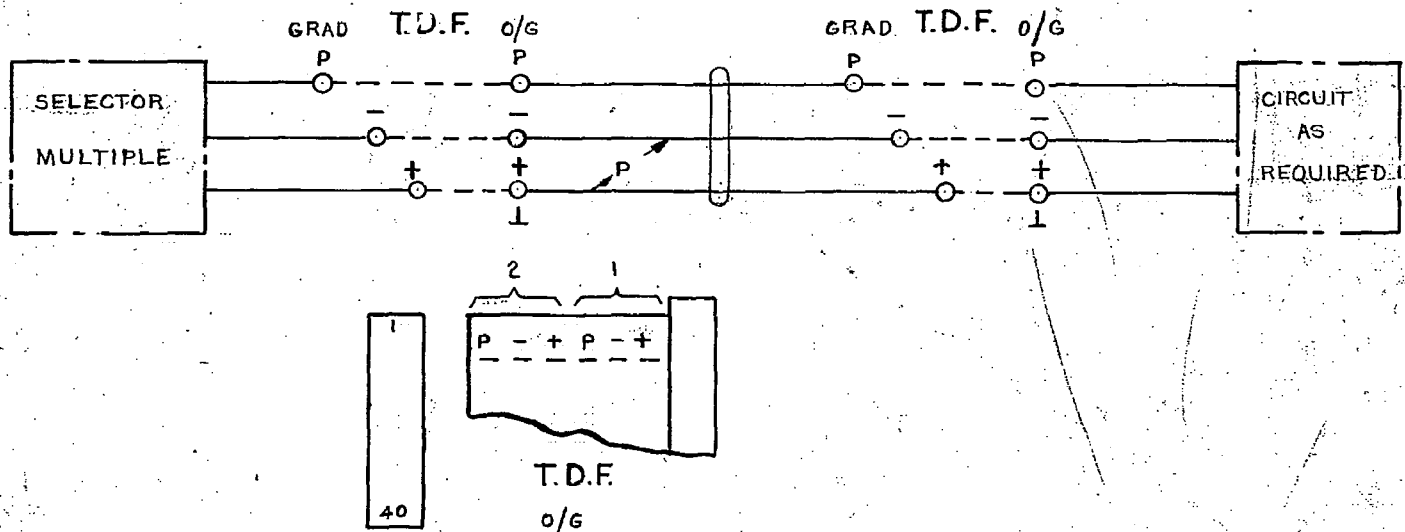


FIG. Y. 3 WIRE CIRCUIT BETWEEN T.D.F.'S



WAS SHEET 6-7	(47364)	12	19-2-65	<i>[Signature]</i>
NO CHANGE ISSUE ADVANCED ONLY	(86630)	15	21-3-68	<i>[Signature]</i>
NO CHANGE ISSUE ADVANCED ONLY	(81738)	14	27-11-67	<i>[Signature]</i>
NO CHANGE ISSUE ADVANCED ONLY	(46460)	13	25-8-66	<i>[Signature]</i>

MISCELLANEOUS JACK
CIRCUITS & MISCELLANEOUS
CIRCUITS BETWEEN FRAMES.

AMENDMENT PARTICULARS

ISSUE DATE APPD

E

N.Z.P.O.

DRAWN CHECKED WIRING CIRCUIT

GBX 11200

SHT 6-8

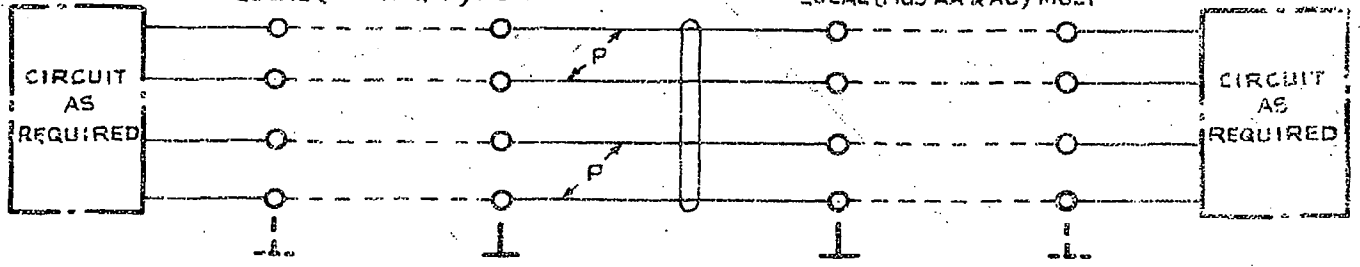
FIGS Z, AA, AB, AC 4 WIRE CIRCUITS BETWEEN MANUAL I.D.F & AUTO I.D.F

MANUAL I.D.F

MULT (FIGS Z & AA) LOCAL
OR
LOCAL (FIGS AB & AC) MULT

AUTO I.D.F

MULT (FIGS Z & AB) LOCAL
OR
LOCAL (FIGS AA & AC) MULT



MANUAL & AUTO
I.D.F
MULT & LOCAL

MARKING TO SUIT
CIRCUIT SERVED



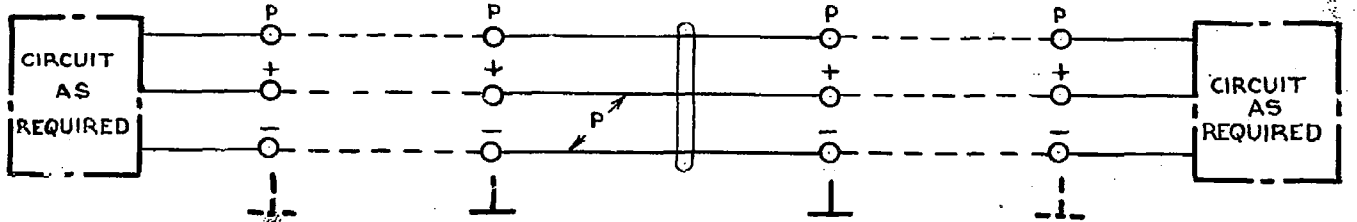
FIGS AD, AE, AF, AG 3 WIRE CIRCUITS BETWEEN AUTO I.D.F.s

AUTO I.D.F

MULT (FIGS AD & AE) LOCAL
OR
LOCAL (FIGS AF & AG) MULT

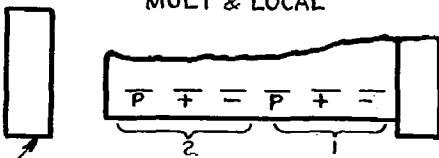
AUTO I.D.F

LOCAL (FIGS AE & AF) MULT
OR
MULT (FIGS AD & AG) LOCAL



I.D.F.
MULT & LOCAL

MARKING TO SUIT
CIRCUIT SERVED



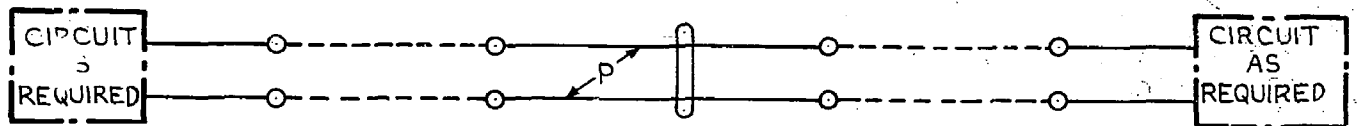
FIGS AH, AJ, AK, AL 2-WIRE CIRCUITS BETWEEN I.D.F.s

I.D.F

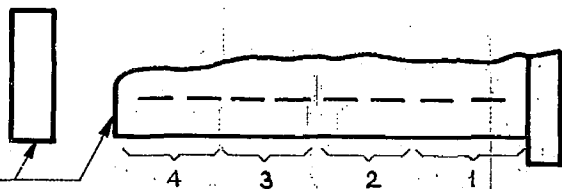
MULT (FIGS AH & AJ) LOCAL
OR
LOCAL (FIGS AK & AL) MULT

I.D.F

MULT (FIGS AH & AK) LOCAL
OR
LOCAL (FIGS AJ & AL) MULT



MARKING TO SUIT
CIRCUIT SERVED



MISCELLANEOUS JACK
CIRCUITS & MISCELLANEOUS
CIRCUITS BETWEEN FRAMES

NO CHANGE, ISSUE: ADVANCED ONLY (86630) 15 21-3-68

AMENDMENT PARTICULARS

ISSUE DATE APPD

E

GBX 11200

N.Z.P.O.

DRAWN CHECKED WIRING CIRCUIT

SHT 7/8

FIG. AM 3 WIRE CIRCUIT BETWEEN T.D.F. GRAD. AND I.D.F. LOCAL
FIG. AN 3 WIRE CIRCUIT BETWEEN T.D.F. GRAD. AND I.D.F. MULT

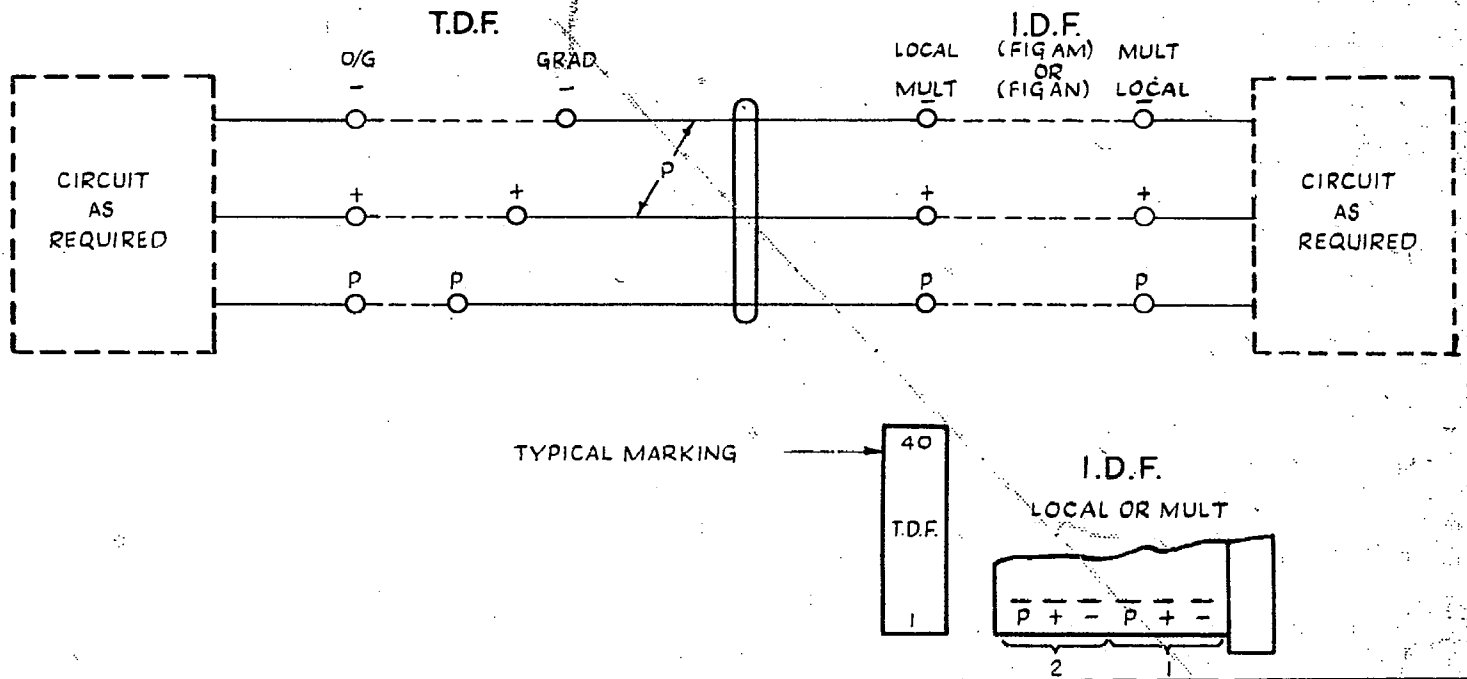
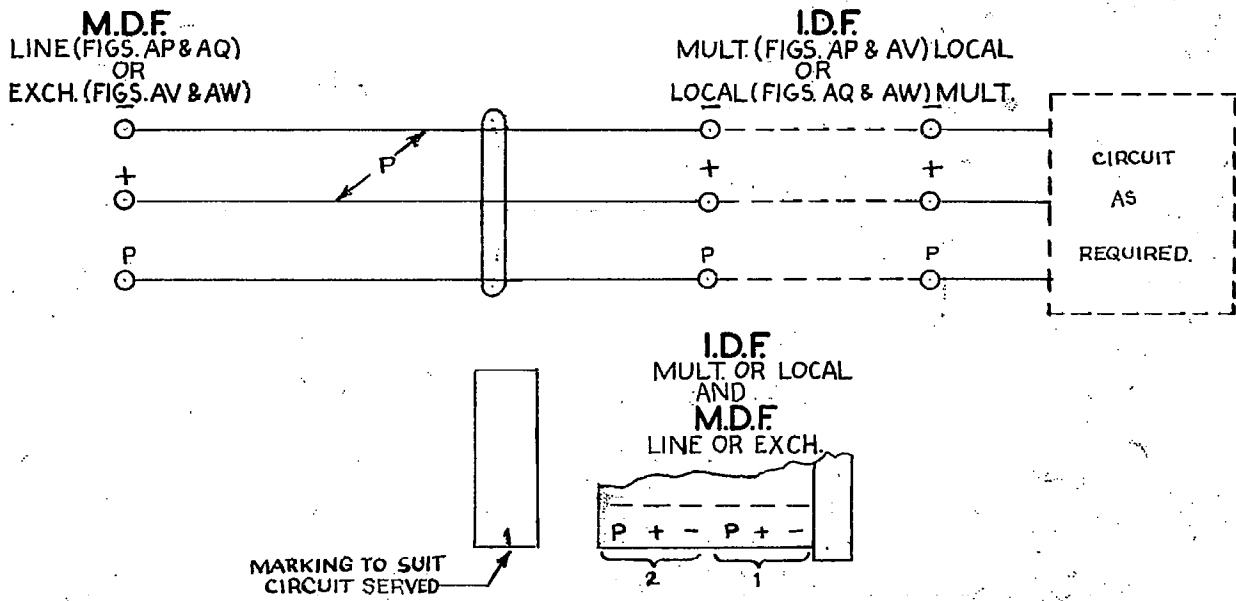
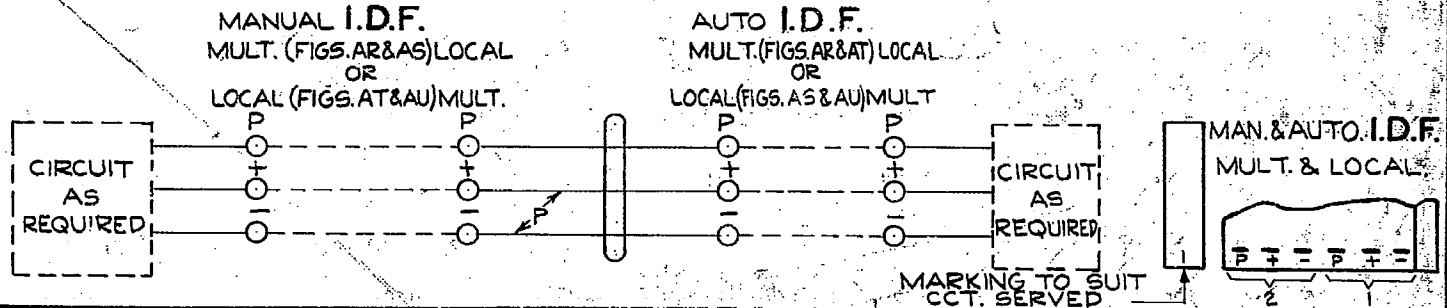


FIG. AP 3-WIRE CIRCUIT BETWEEN M.D.F. LINE AND I.D.F. MULT.
FIG. AQ " " " " " " " " LOCAL
FIG. AV " " " " " EXCH. " " MULT.
FIG. AW " " " " " " " " LOCAL



FIGS. AR, AS, AT, AU 3-WIRE CCTS. BETWEEN MAN. I.D.F. & AUTO I.D.F.



AMENDMENT	PARTICULARS	ISSUE	DATE	APPD.
N.Z.P.O.	DRAWN	CHECKED	WIRING CIRCUIT	

MISCELLANEOUS JACK
 CIRCUITS & MISCELLANEOUS
 CIRCUITS BETWEEN FRAMES

GBX 11200

SHT 8-8