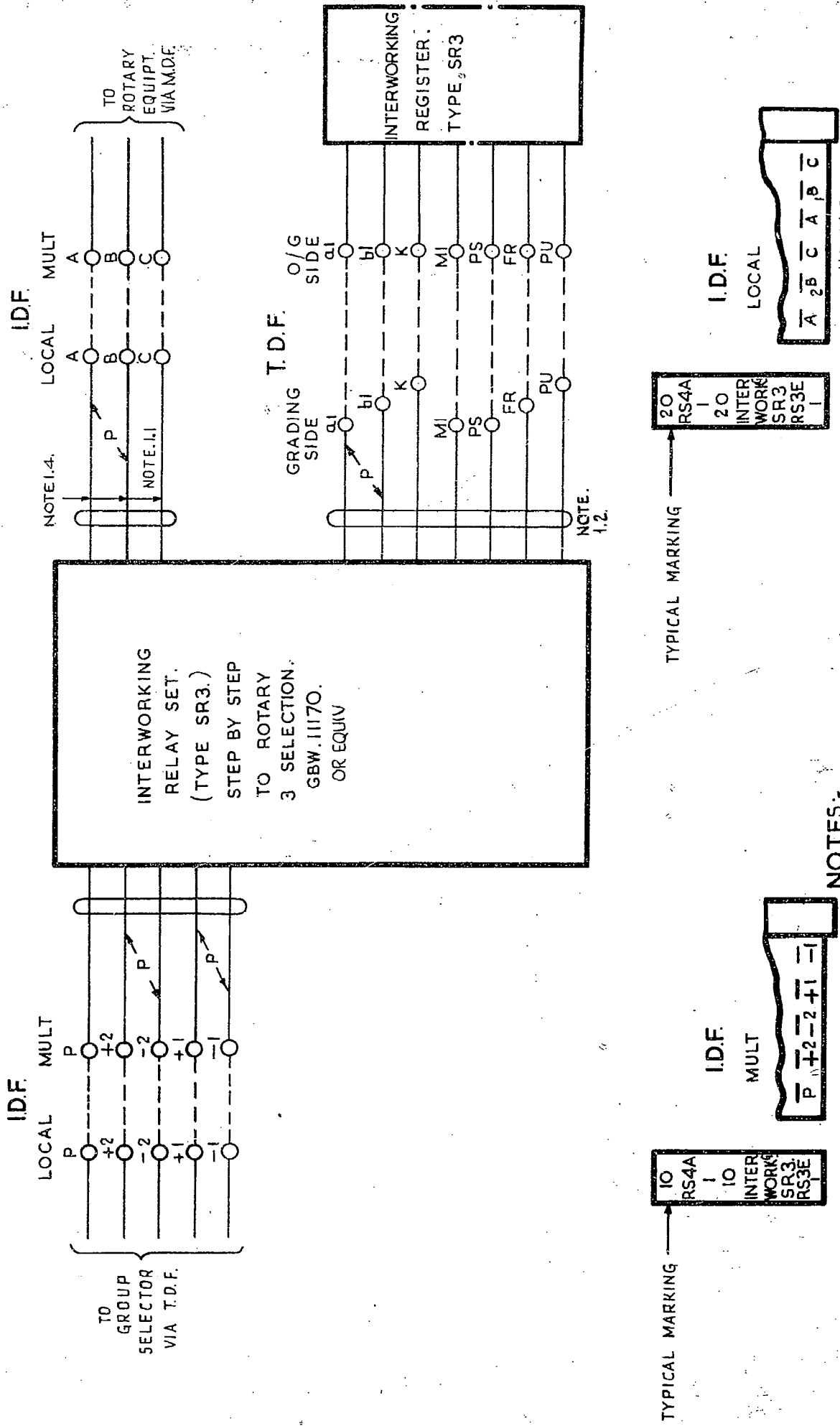


FIG A CCT CONNECTED VIA I.D.F.



NOTES:-

- 1.4. FOR NEW WORK THESE LEADS ARE TO BE CABLED DIRECT TO THE M.D.F.
- 1.1. 'C' LEAD ONLY REQ'D WHEN WORKING INTO LOCAL 7A GROUP SELECTOR.
- 1.2. WHEN FULL AVAILABILITY TO I/W REGISTERS IS SPECIFIED, THESE LEADS ARE CABLED DIRECT AND NOT VIA T.D.F.
- 1.3. AT SOME EXCHANGES THESE BLOCKS ARE 3 X 20

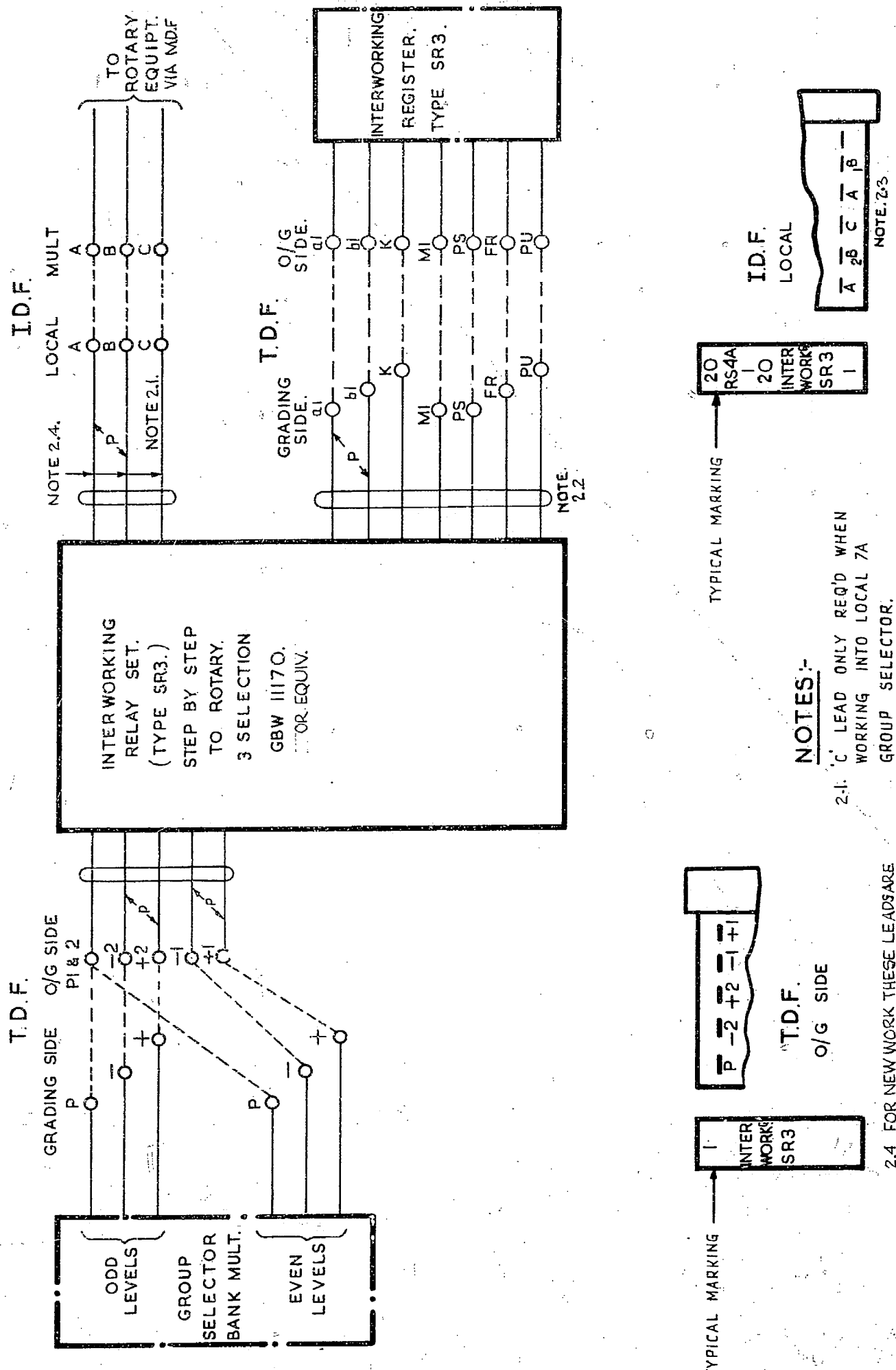
AMENDMENT PARTICULARS	ISSUE	DATE	APPD
1		17.8.50	
2		2.10.50	
3		5.5.54	
4		1.11.63	
5		2.6.67	

**INTERWORKING RELAY SET
TYPE SR3
STEP BY STEP TO ROTARY
3 SELECTION.**

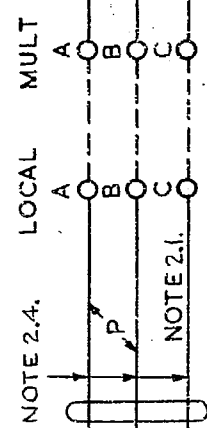
N.Z. RO.	J.C.	DRAWN	CHECKED	WIRED	ENGR'S

**GBX 11170
11171** SHT. 1-4

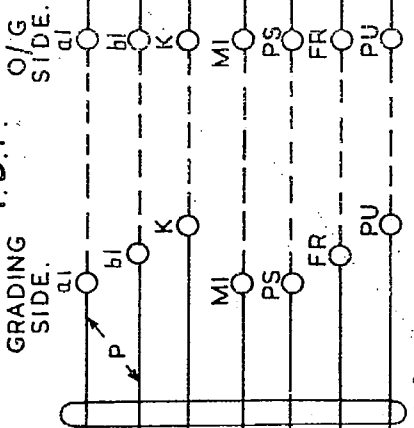
FIG B CCT CONNECTED VIA T.D.F.



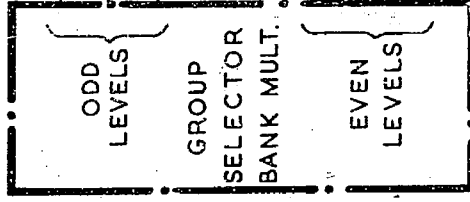
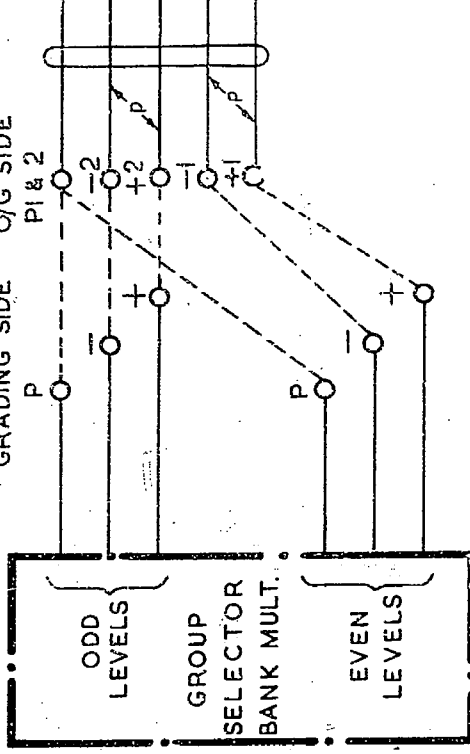
I.D.F.



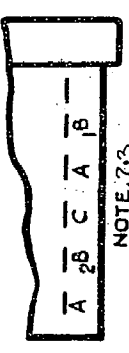
T.D.F.



INTERWORKING RELAY SET. (TYPE SR3.)
STEP BY STEP TO ROTARY 3 SELECTION
GBW III70. OR EQUIV.

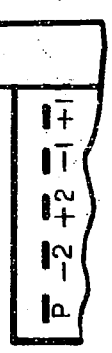


I.D.F. LOCAL

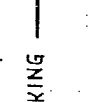


NOTES:-

- 2.1. 'C' LEAD ONLY REQ'D WHEN WORKING INTO LOCAL 7A GROUP SELECTOR.
- 2.2. WHEN FULL AVAILABILITY TO I/W REGISTERS IS SPECIFIED, THESE LEADS ARE CABLED DIRECT AND NOT VIA T.D.F.
- 2.3. AT SOME EXCHANGES THESE BLOCKS ARE 3 X 20



TYPICAL MARKING



- 2.4 FOR NEW WORK THESE LEADS ARE TO BE CABLED DIRECT TO THE M.D.F.

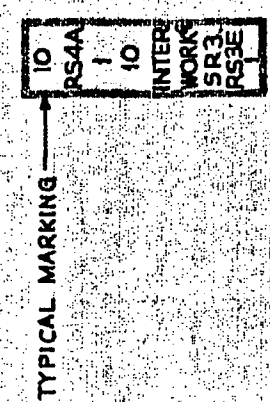
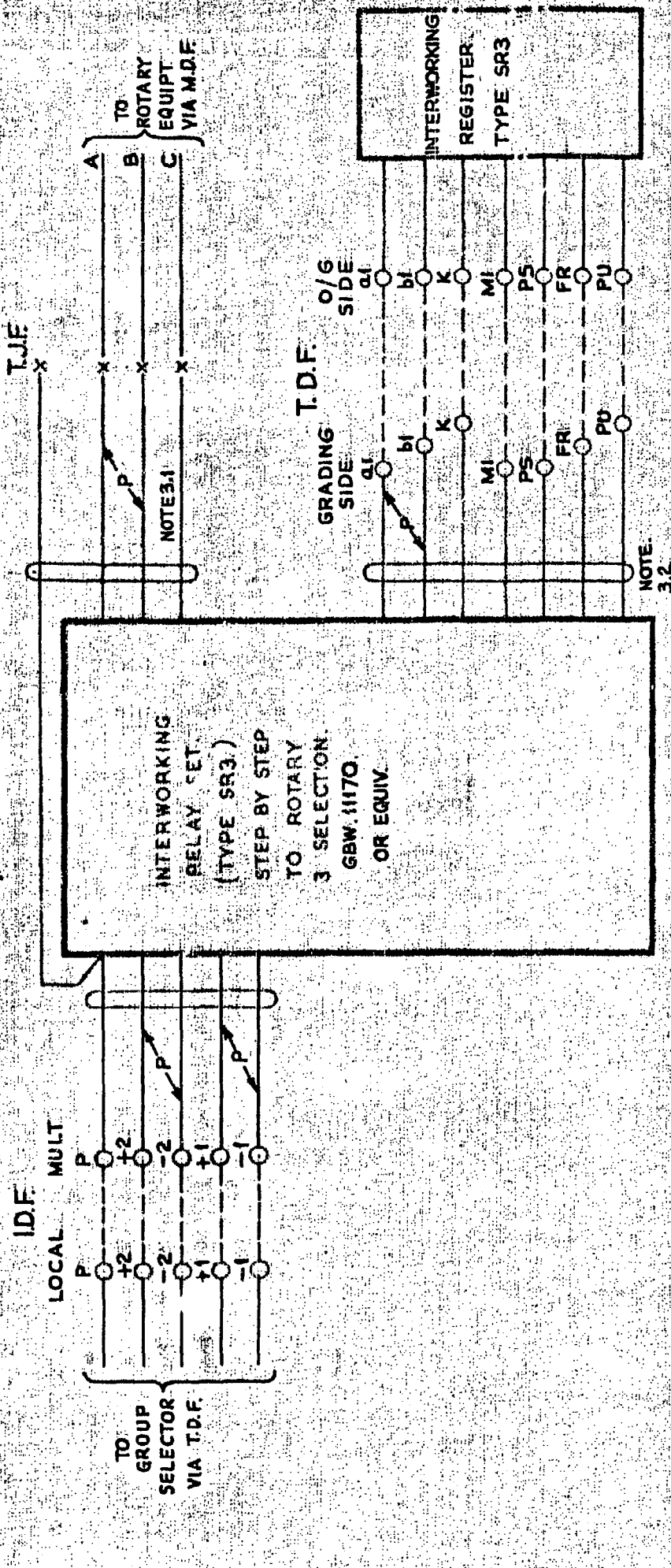
AMENDMENT PARTICULARS	ISSUE	DATE	APP'D
WAS SHEET 2-2 (72019)	5	2-6-67	DBB
NOTE 2.4 AND GBX III71 ADDED (69396)	4	1-11-63	DBB
T.D.F. TERMINATIONS REVISED. (31667)	3	5-5-54	CLM
I.D.F. BLOCK WAS SHOWN AS 3X20. NOTE.3 ADDED	2	2-10-50	N
	1	17-8-50	

INTERWORKING RELAY SET.
TYPE SR3.
STEP BY STEP TO ROTARY
3 SELECTION.

N.Z. P.O.	J.C.	DRAWN	CHECKED	WIRED	ENGINEER

GBX III70
III71
SHT 2-4

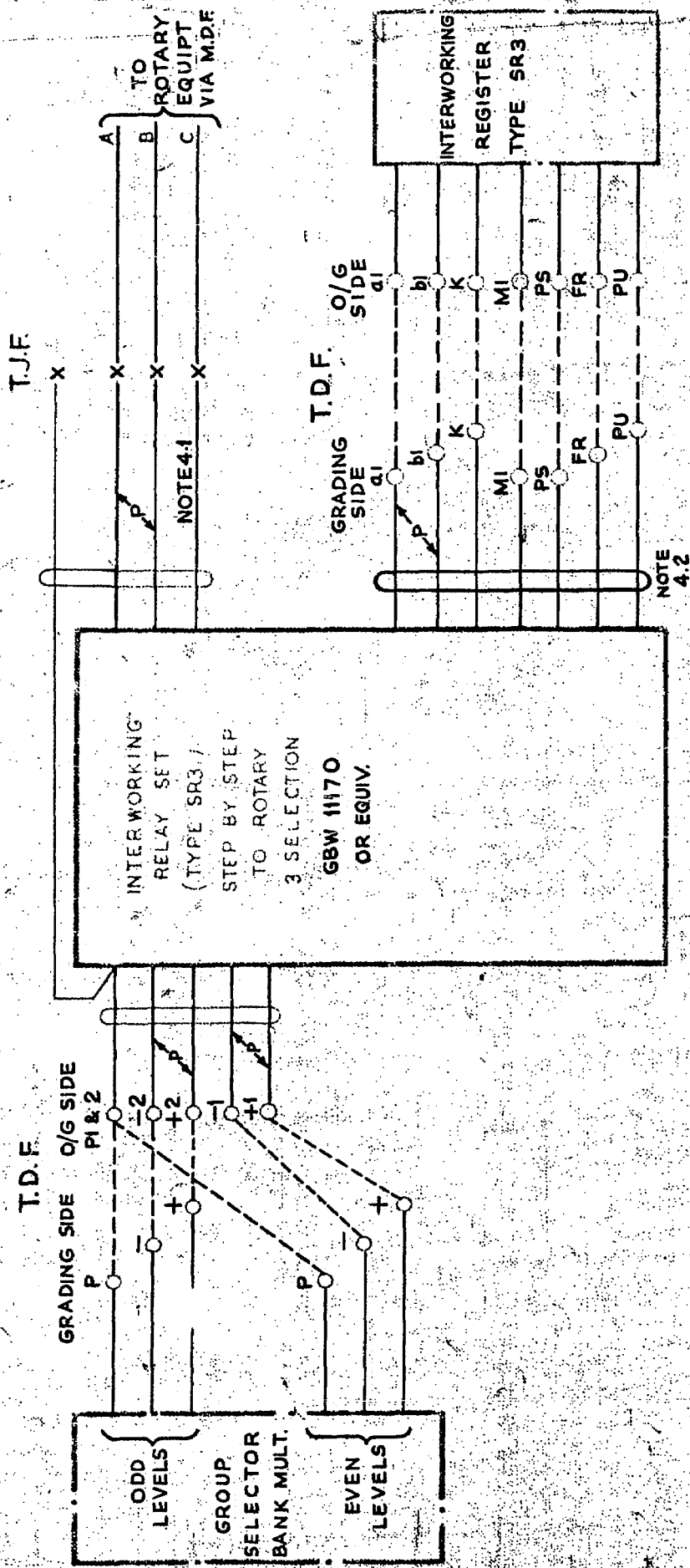
FIG. C CCT CONNECTED VIA IDF WITH O/G CONNECTIONS TO ROTARY VIA T.J.F.



NOTES:-
3.1. 'C' LEAD ONLY REQ'D WHEN WORKING INTO LOCAL TA GROUP SELECTOR.
3.2. WHEN FULL AVAILABILITY TO I/W REGISTERS IS SPECIFIED, THESE LEADS ARE CABLED DIRECT AND NOT VIA T.D.F.

AMENDMENT PARTICULARS				(72819)	5	2.6.67	8/13	INTERWORKING RELAY SET. TYPE SR3. STEP BY STEP TO ROTARY 3 SELECTION.	
NZPO	DRAWN	CHECKED	WIRED	ENGB					E
GBX 11170 11171								SHT. 3-4	

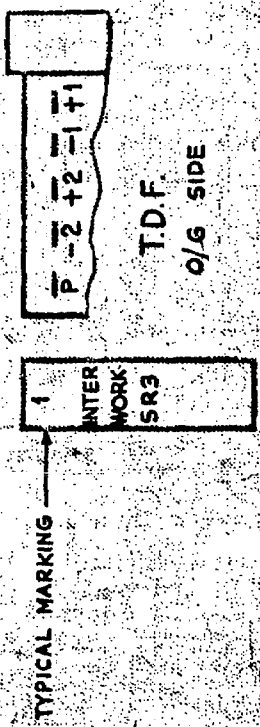
FIG. D. CCT CONNECTED VIA T.D.F. WITH O/G CONNECTIONS TO ROTARY VIA T.J.F.



NOTE 4.2

NOTES:-

- 4.1 'C' LEAD ONLY REQ'D WHEN WORKING INTO LOCAL TA GROUP SELECTOR
- 4.2 WHEN FULL AVAILABILITY TO I/W REGISTERS IS SPECIFIED THESE LEADS ARE CABLED DIRECT AND NOT VIA T.D.F.



INTERWORKING RELAY SET
TYPE SR3.
STEP BY STEP TO ROTARY
3 SELECTION.

(72819) 5 2667 8/8

AMENDMENT PARTICULARS

NZPO

DRAWN

GBX 11170
11171

SHT 4-4