

FIG. 1 200 OUTLET GROUP SELECTOR CONNECTED VIA T.D.F.

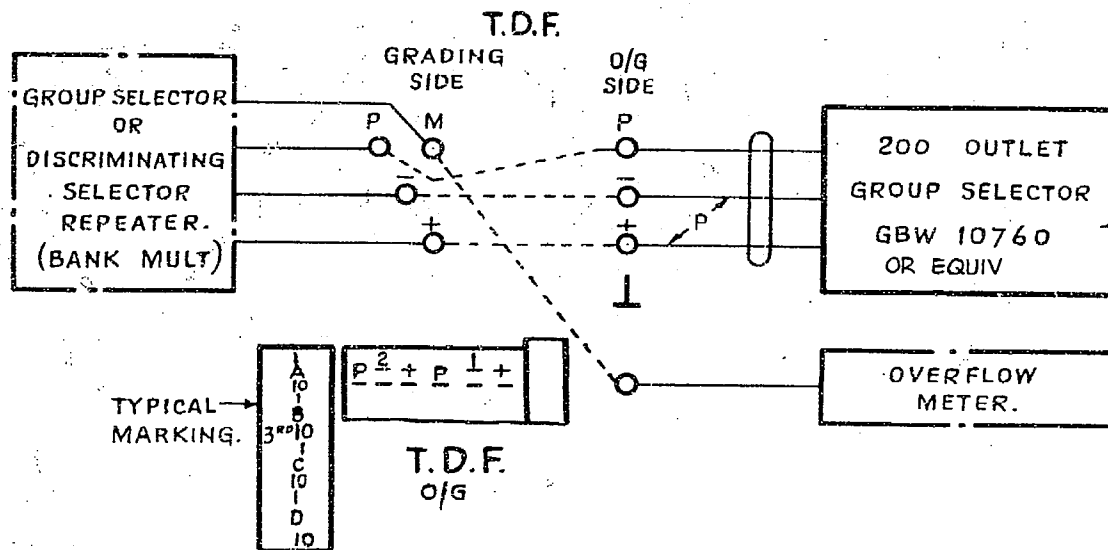


FIG. 2 200 OUTLET 1<sup>ST</sup> GROUP SELECTOR CONNECTED VIA T.D.F.

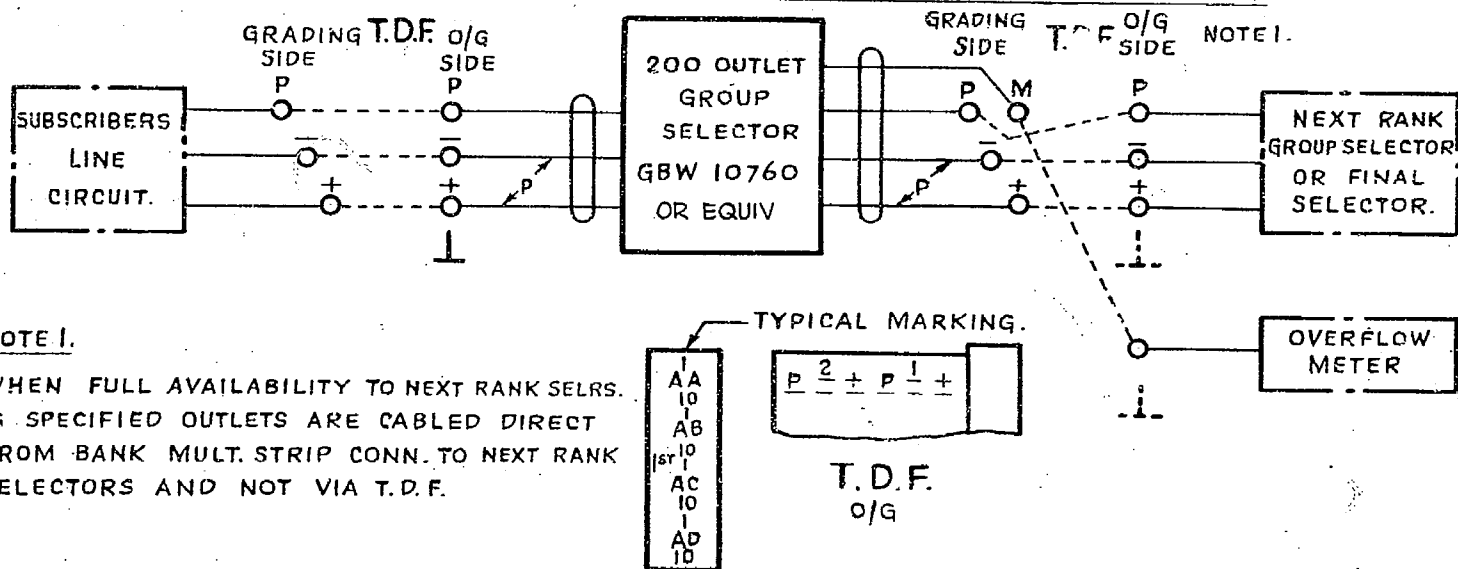
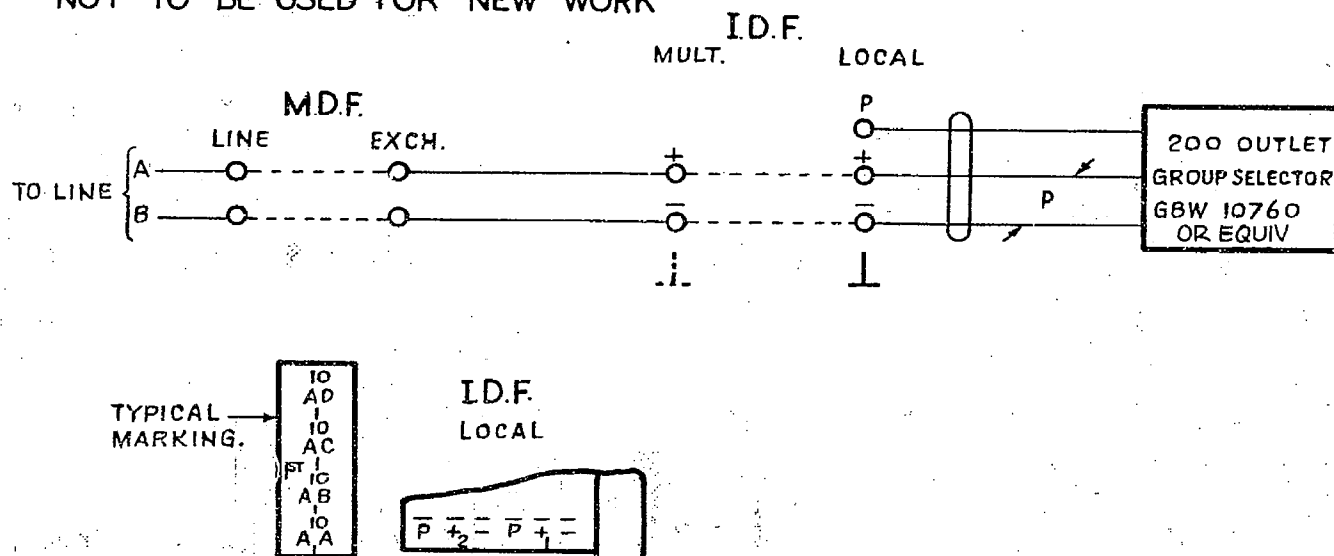


FIG. 3 200 OUTLET GROUP SELECTOR INCOMING VIA M.D.F. AND I.D.F. NOT TO BE USED FOR NEW WORK



WAS SHEET 1-3. (69174) 7 4-10-63 *OBK*

FIG. 3 NOTE RE. NEW WORK ADDED (53289) 8 10-11-66 *OBK*

AMENDMENT PARTICULARS

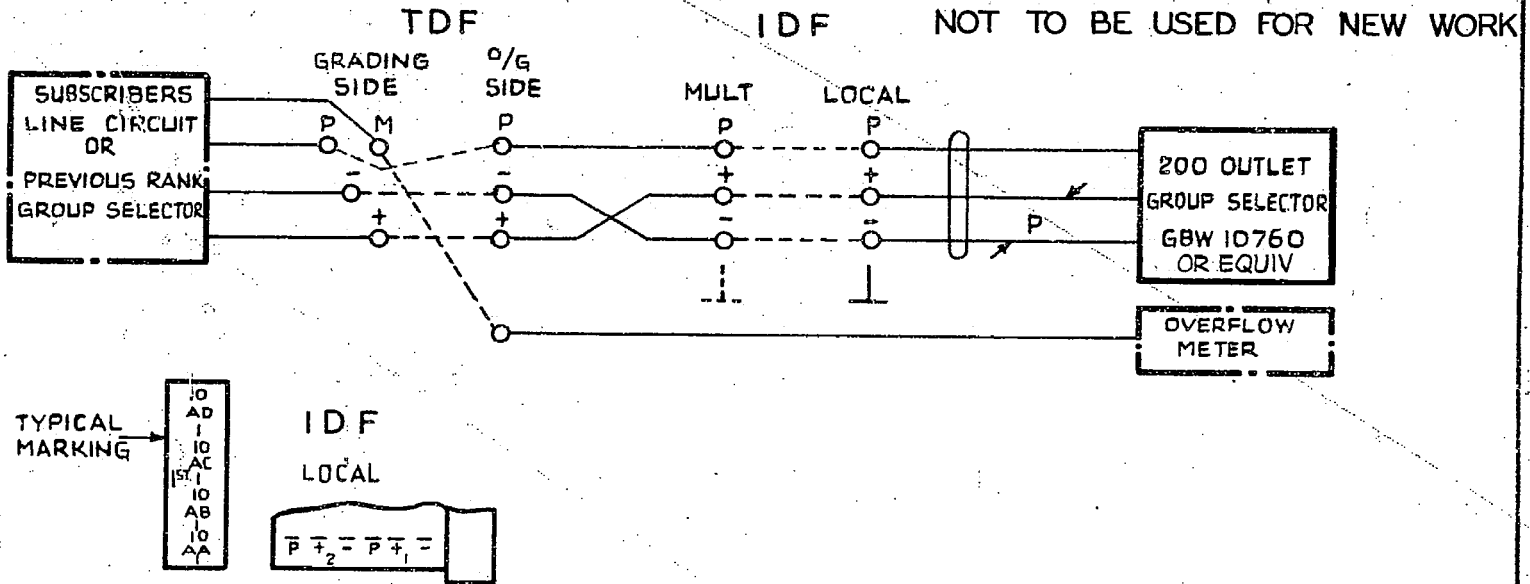
ISSUE DATE APPD

200 OUTLET GROUP SELECTOR.

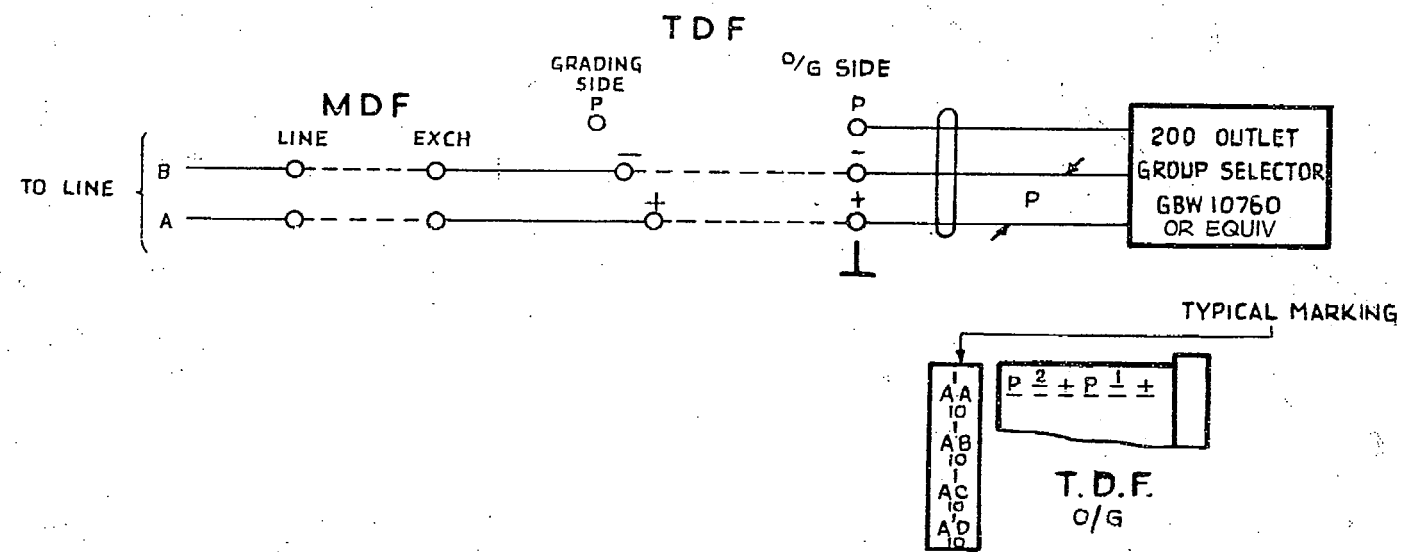
N.Z. P.O. DRAWN CHECKED WIRED ENGINEERS

GBX 10760 10762 10761 SHEET 1-5

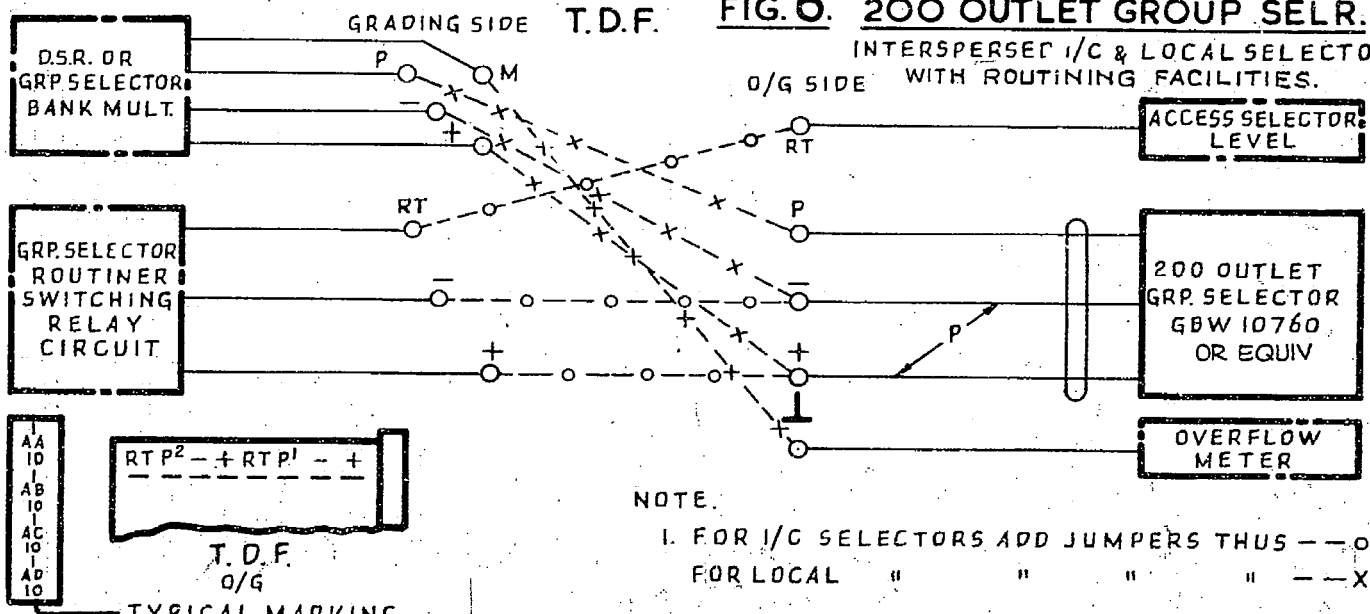
**FIG 4 200 OUTLET GROUP SELECTOR CONNECTED VIA TDF & IDF LOCAL** NOT TO BE USED FOR NEW WORK



**FIG 5 200 OUTLET GROUP SELECTOR INCOMING VIA MDF & TDF**

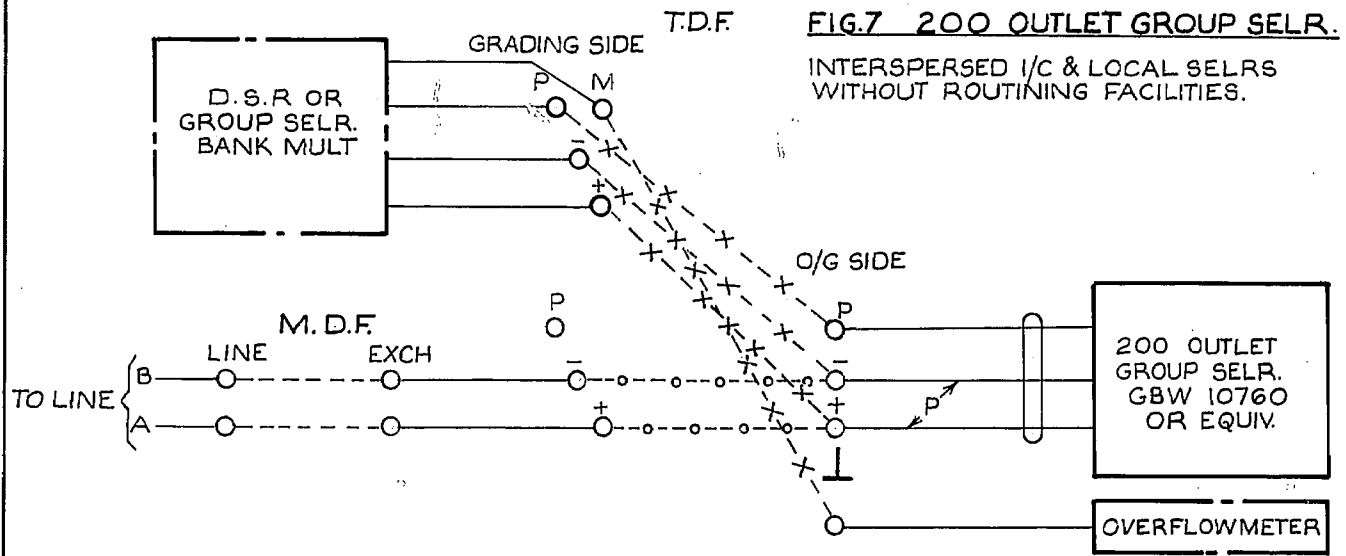


**FIG. 6. 200 OUTLET GROUP SELR. INTERSPERSED I/C & LOCAL SELECTORS WITH ROUTING FACILITIES.**

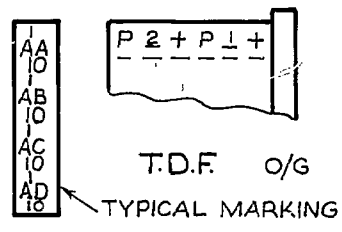


NOTE:  
 1. FOR I/C SELECTORS ADD JUMPERS THUS ---o---  
 FOR LOCAL " " " " ---X---

FIG. 4. TITLE AMENDED WAS SHEET 2-3 (69174)		7	4-10-63	DBH	200 OUTLET GROUP SELECTOR	
FIG. 4 NOTE RE. NEW WORK ADDED: (53289)		8	10-11-66			
AMENDMENT PARTICULARS		ISSUE	DATE	APPD		E
N.Z. P.O.	DRAWN	CHECKED	WIRING	ENGINEER		
					GBX 10760 10762 10761 SHEET 2-5	

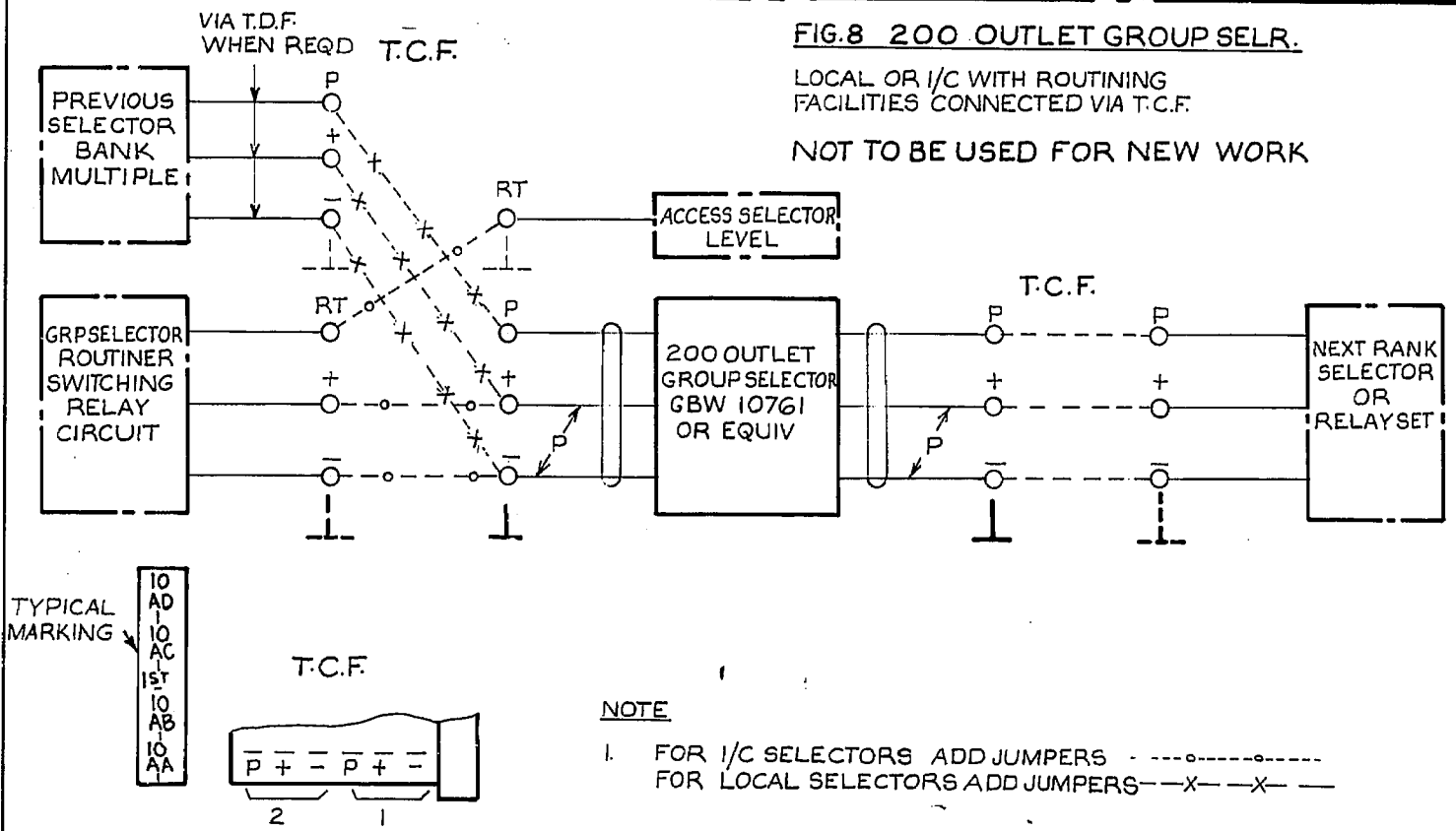


**NOTE**  
 1. FOR I/C SELECTORS ADD JUMPERS -----  
 FOR LOCAL SELECTORS ADD JUMPERS ---X---X---



**FIG. 7 200 OUTLET GROUP SELR.**

INTERSPERSED I/C & LOCAL SELRS WITHOUT ROUTINING FACILITIES.



**FIG. 8 200 OUTLET GROUP SELR.**

LOCAL OR I/C WITH ROUTINING FACILITIES CONNECTED VIA T.C.F.  
 NOT TO BE USED FOR NEW WORK

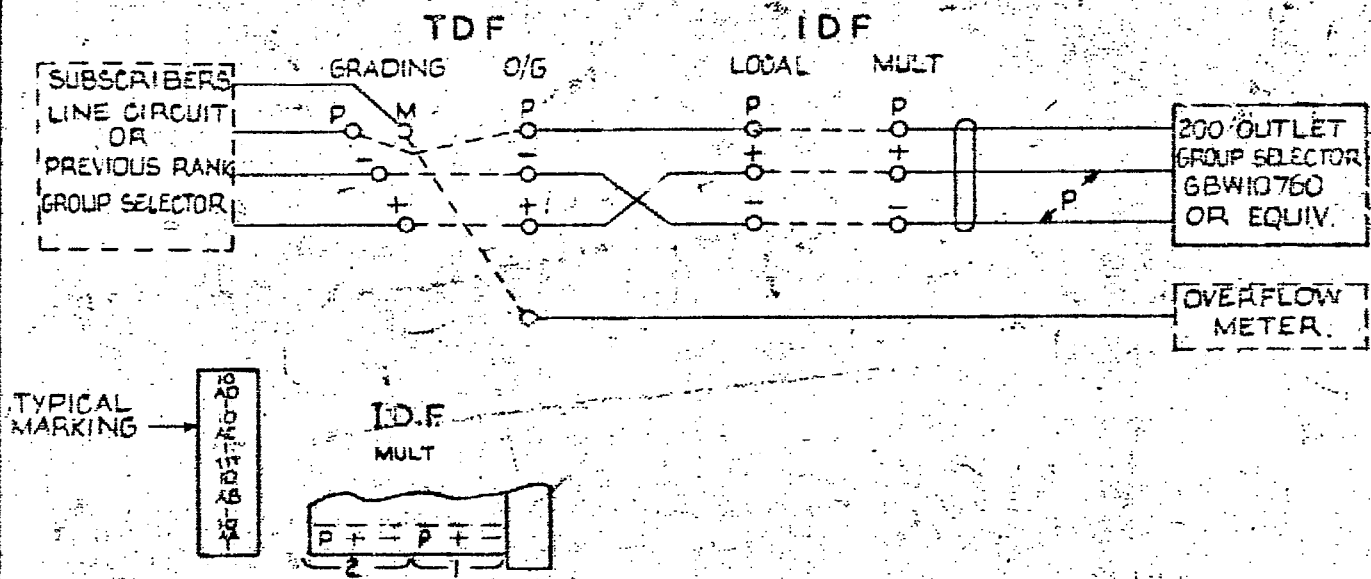
**NOTE**  
 1. FOR I/C SELECTORS ADD JUMPERS -----  
 FOR LOCAL SELECTORS ADD JUMPERS ---X---X---

PROOF

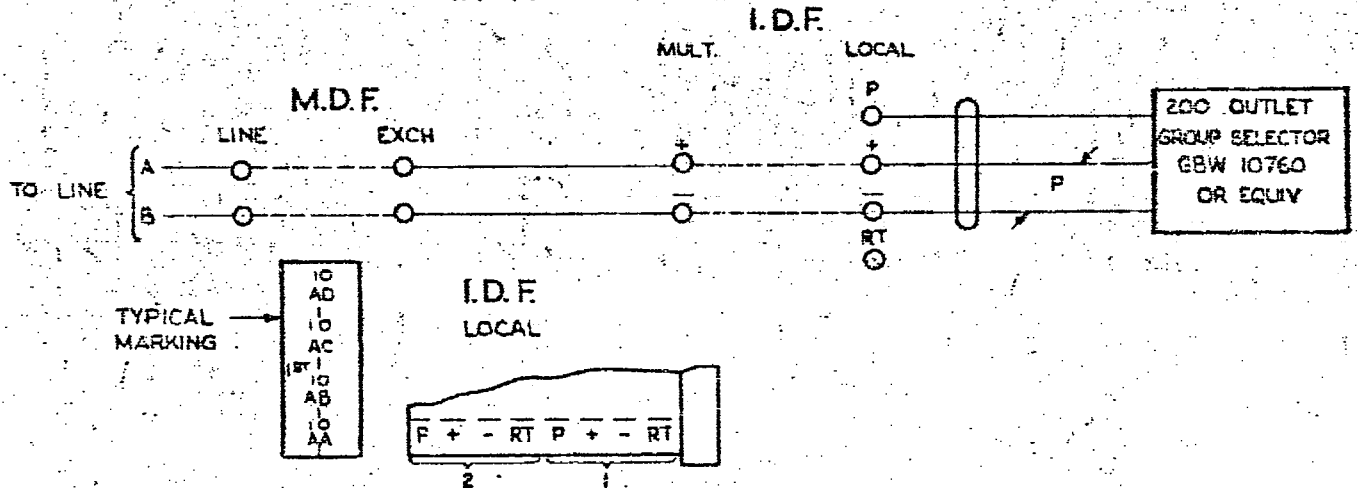
RETRACED	(183021)	8A	20.11.79	A.D.G.	<b>200 OUTLET GROUP SELECTOR</b>	
FIG.8. NOTE RE. NEW WORK ADDED.	(53289)	8	10.11.66			
WAS SHEET 3-3	(69174)	7	4.10.63			
10762 ADDED TO DIAGRAM N°	(42366)	6	27.9.61			
FIG.8 ADDED	(65229)	5	7.7.55			
NO CHANGE ISSUE ADVANCED ONLY	(31667)	4	5.5.54			
		3	6.11.50			
AMENDMENT PARTICULARS		ISSUE	DATE	APD.	SIZE: A4	E
DRAWN		CHECKED	WIRING	ENGRS	GBX 10760 10762 10761	
NZPO	5	Centimetres		10	SHEET 3-5 20	

# FIG. 9 200 OUTLET GROUP SELECTOR CONNECTED VIA I.D.F. MULT

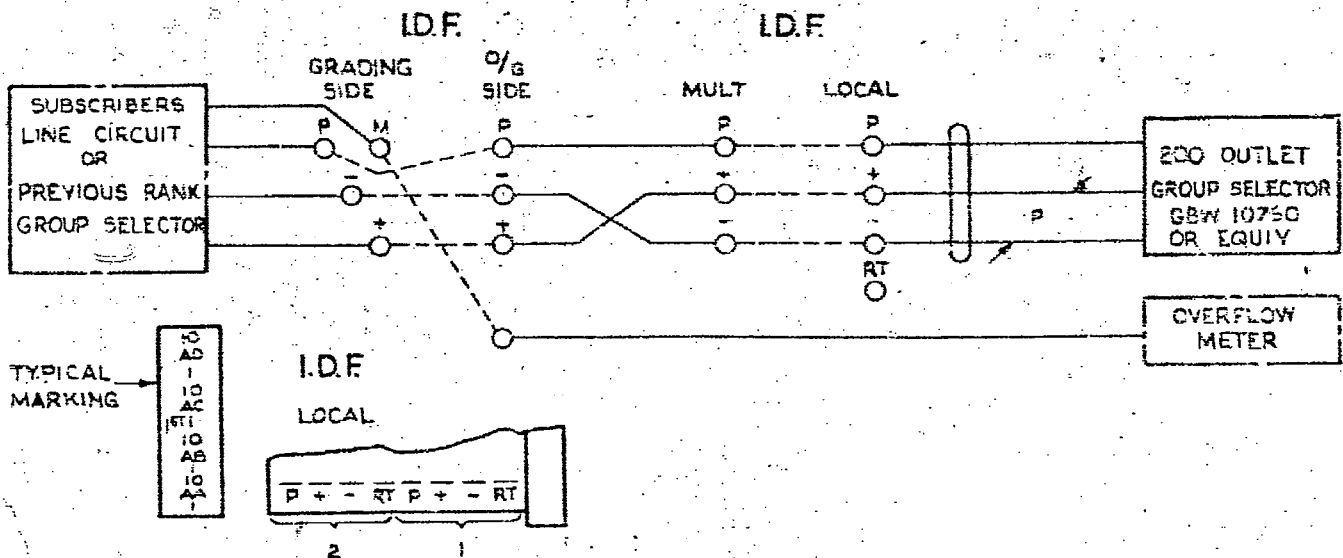
NOT TO BE USED FOR NEW WORK



# FIG. 10 200 OUTLET GROUP SELECTOR INCOMING VIA M.D.F. AND I.D.F. WITHOUT ROUTING FACILITIES.



# FIG. 11 200 OUTLET GROUP SELECTOR CONNECTED VIA I.D.F. LOCAL



200 OUTLET GROUP SELECTOR

FIGS 10 & 11 ADDED (53289) E 10-11-66

AMENDMENT PARTICULARS

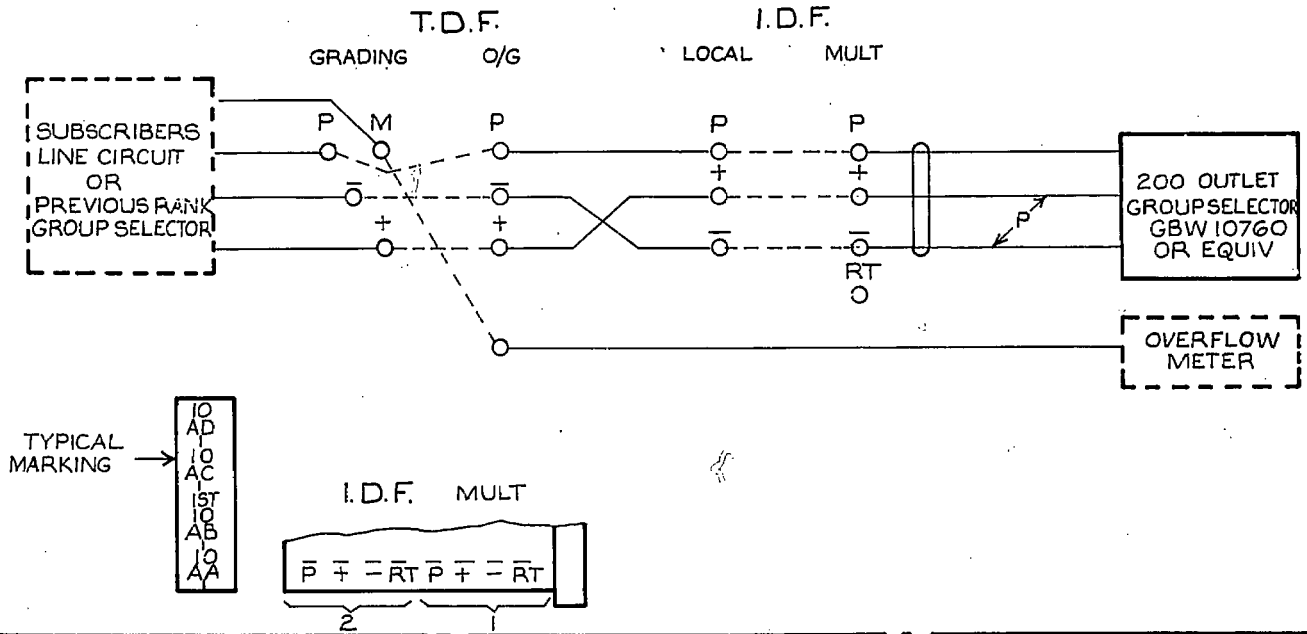
ISSUE DATE A/P

GBX 10760 10762  
10761

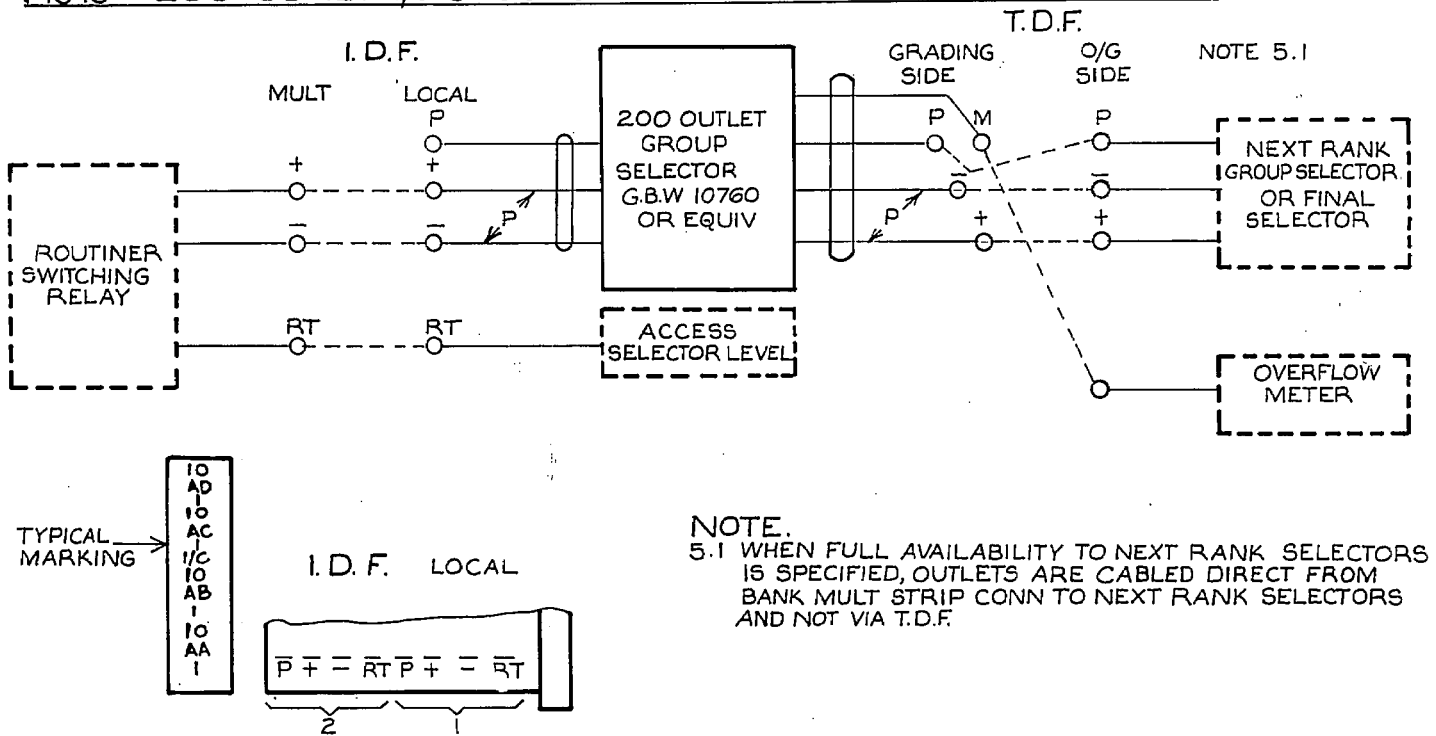
DRAWN CHECKED WIRING CIRCUIT

SHEET 4-5

**FIG 12 200 OUTLET GROUP SELECTOR CONNECTED VIA I.D.F. MULT.**



**FIG 13 200 OUTLET I/C GROUP SELECTOR WITH ROUTINING FACILITIES.**



PROOF

				200 OUTLET GROUP SELECTOR		
RETRACED		(183021)	8A	20.11.79		
		(53289)	8	10.11.66		
AMENDMENT PARTICULARS			ISSUE	DATE	APD.	SIZE A4
					GBX 10760 10762 10761	
NZPO		DRAWN	CHECKED	WIRING	ENGRS	SHEET. 5-5