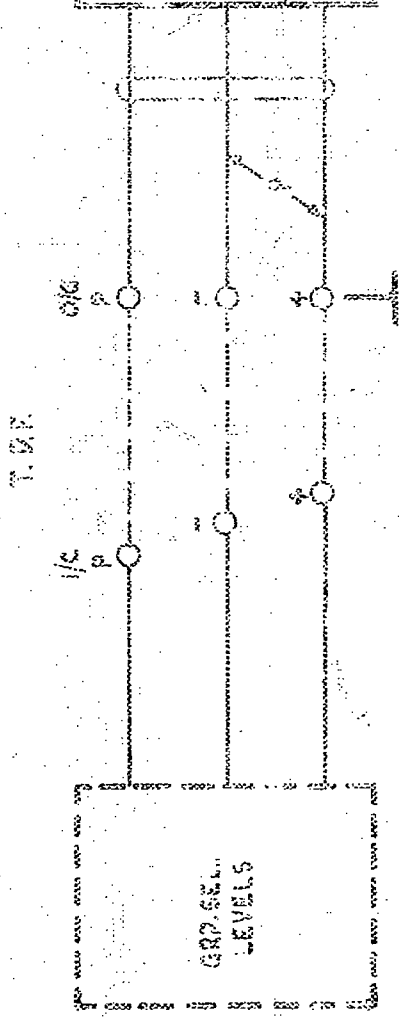
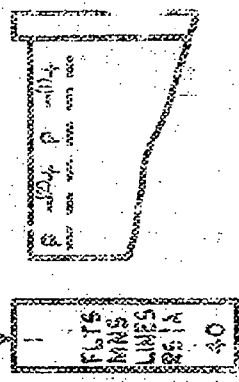


FAULTSMENS LINES
 TERMINATING ON
 TEST DESK OR
 RACK OR EQUIV. WITH
 TONE SWITCHING KEY
 GBW 10490 FIG. 1
 OR EQUIV.



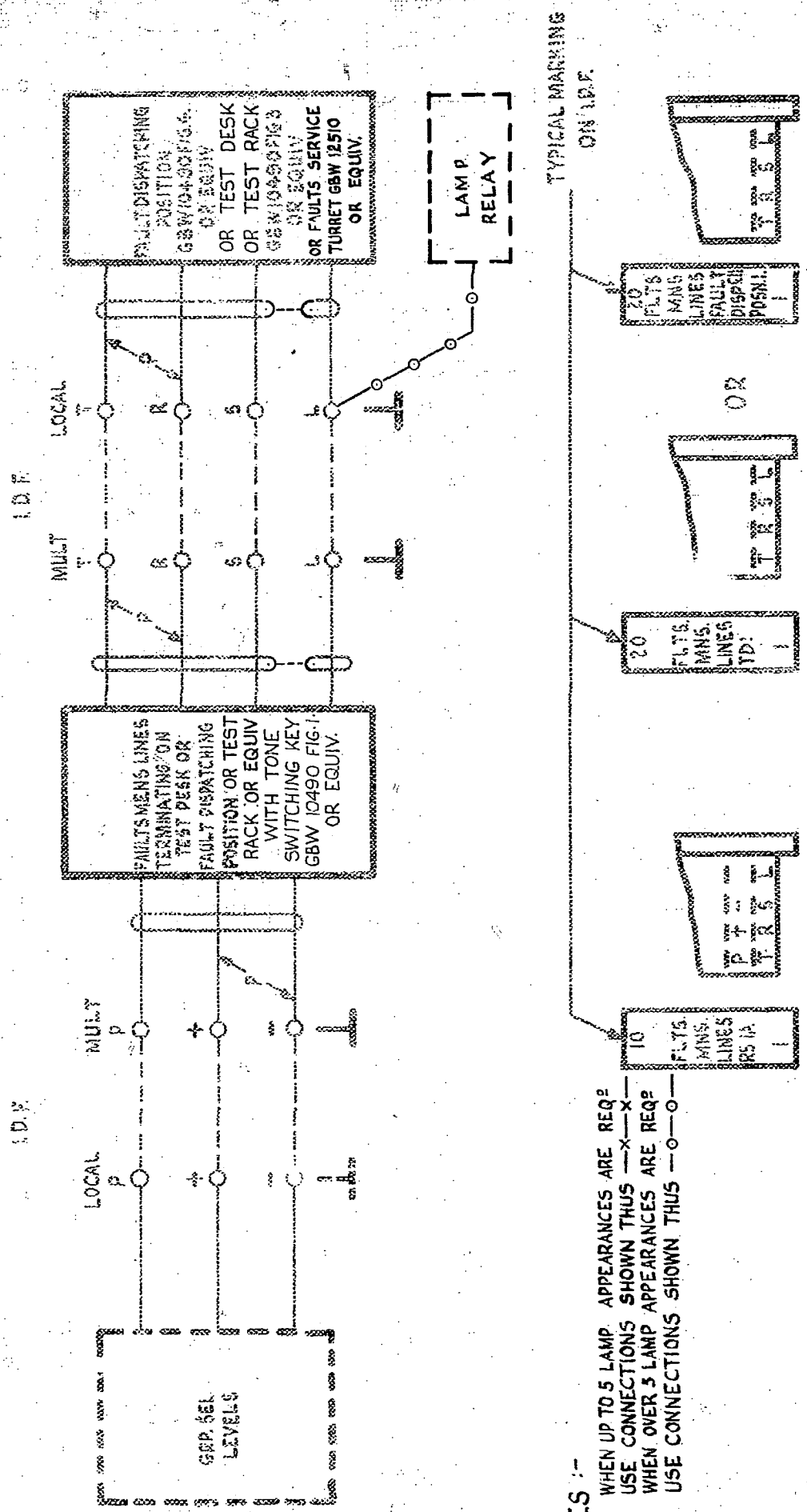
TYPICAL MARKING
 ON T.D.F.



10/11

FIG. 1 EXCHANGES WITHOUT IDF

| | | | | | |
|---------------------------|---------|-------|---------|-----------------------------|-----------|
| | | | | FAULTSMENS LINES | |
| | | | | TERMINATING ON TEST DESK OR | |
| | | | | RACK OR FAULT DISPATCHING | |
| | | | | POSITION OR EQUIV. | |
| | | | | WITH TONE SWITCHING KEY. | |
| REF. TO TEST RACK ADDED | (8006) | 4 | 24.3.71 | BS.H | |
| TITLE AMENDED | (34022) | 3 | 26.8.60 | AK | |
| ISSUE ADVANCED, NO CHANGE | (34022) | 2 | 26.8.60 | AK | |
| | (65736) | 1 | 7.10.55 | CLM | |
| AMENDMENT PARTICULARS | | ISSUE | DATE | APPD | REF |
| NZ PO | | DRAWN | CHECKED | WIRING | CIRCUIT |
| | | | | | GBX 10490 |
| | | | | | SHEET 1-5 |



TYPICAL MARKING ON I.D.F.

NOTES :-
 2-1 WHEN UP TO 5 LAMP APPEARANCES ARE REQ. USE CONNECTIONS SHOWN THUS —X—X— WHEN OVER 5 LAMP APPEARANCES ARE REQ. USE CONNECTIONS SHOWN THUS —O—O—

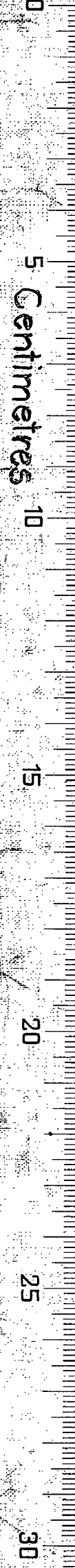
| | | | |
|--|-------|---------|----------------|
| REF. TO TEST RACK ADDED (8006) | 4 | 24-3-71 | BSH |
| LAMP LEADS WERE NOT SHOWN (34022) | 3 | 26-8-60 | AK |
| LAMP LEADS DELETED. SHEETS 4 & 5 ADDED (34022) | 2 | 26-8-60 | AK |
| (65736) | 1 | 7-10-55 | CLM |
| AMENDMENT PARTICULARS | ISSUE | DATE | APP. REF. |
| NZ.P.O. | DRAWN | CHECKED | WIRING CIRCUIT |

FAULTSMENS LINES
 TERMINATION ON TEST DESK OR RACK OR FAULT DISPATCHING POSITION OR EQUIV. WITH TONE SWITCHING KEY.

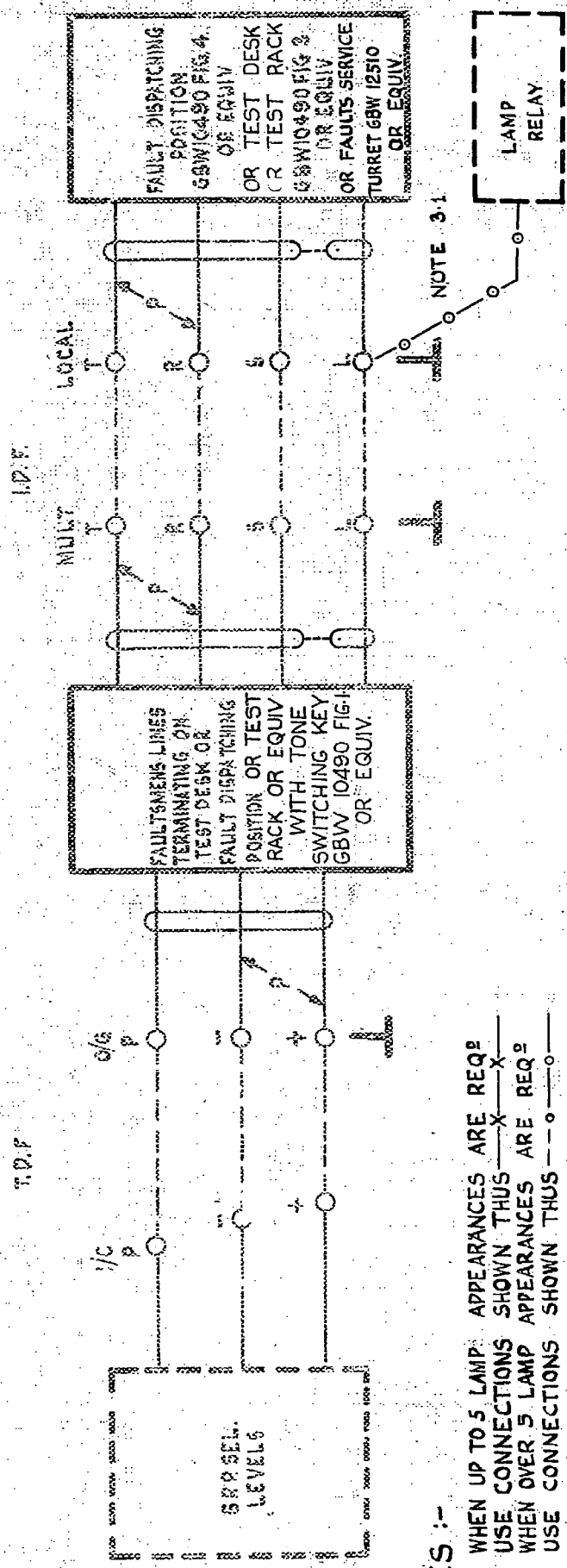
GBX 10490

SHEET 2-5

FIG 2 EXCHANGES WITH I.D.F. FOR NEW WORK SEE FIG. D.



| | | | |
|--|---------|---------|----------------|
| REF. TO TEST RACK ADDED (8006) | 4 | 24.3.71 | BSH |
| LAMP LEADS WERE NOT SHOWN (34022) | 3 | 26.9.66 | AW |
| LAMP LEADS DELETED. SHEETS 4&5 ADDED (34022) | 2 | 26.8.60 | AW |
| | (65736) | 7.10.55 | AW |
| AMENDMENT PARTICULARS | ISSUE | DATE | APPROV |
| NZPO | DRAWN | CHECKED | WIRING CIRCUIT |



NOTES :-
 3.1 WHEN UP TO 5 LAMP APPEARANCES ARE REQD USE CONNECTIONS SHOWN THUS —X—X—
 WHEN OVER 5 LAMP APPEARANCES ARE REQD USE CONNECTIONS SHOWN THUS —o—o—

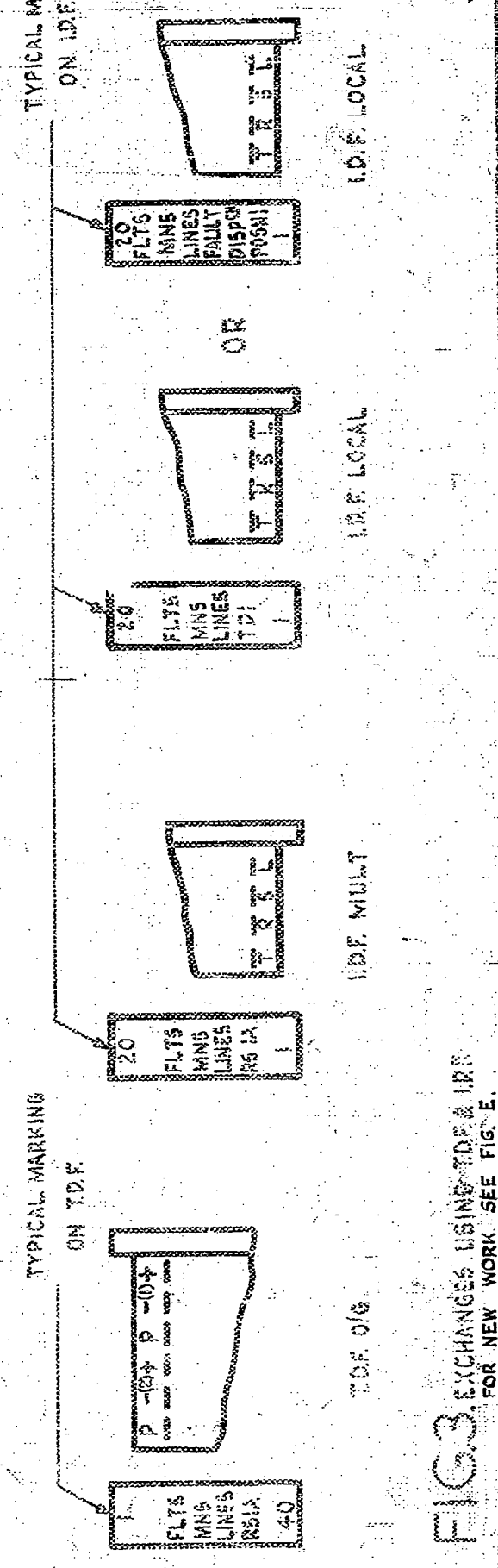
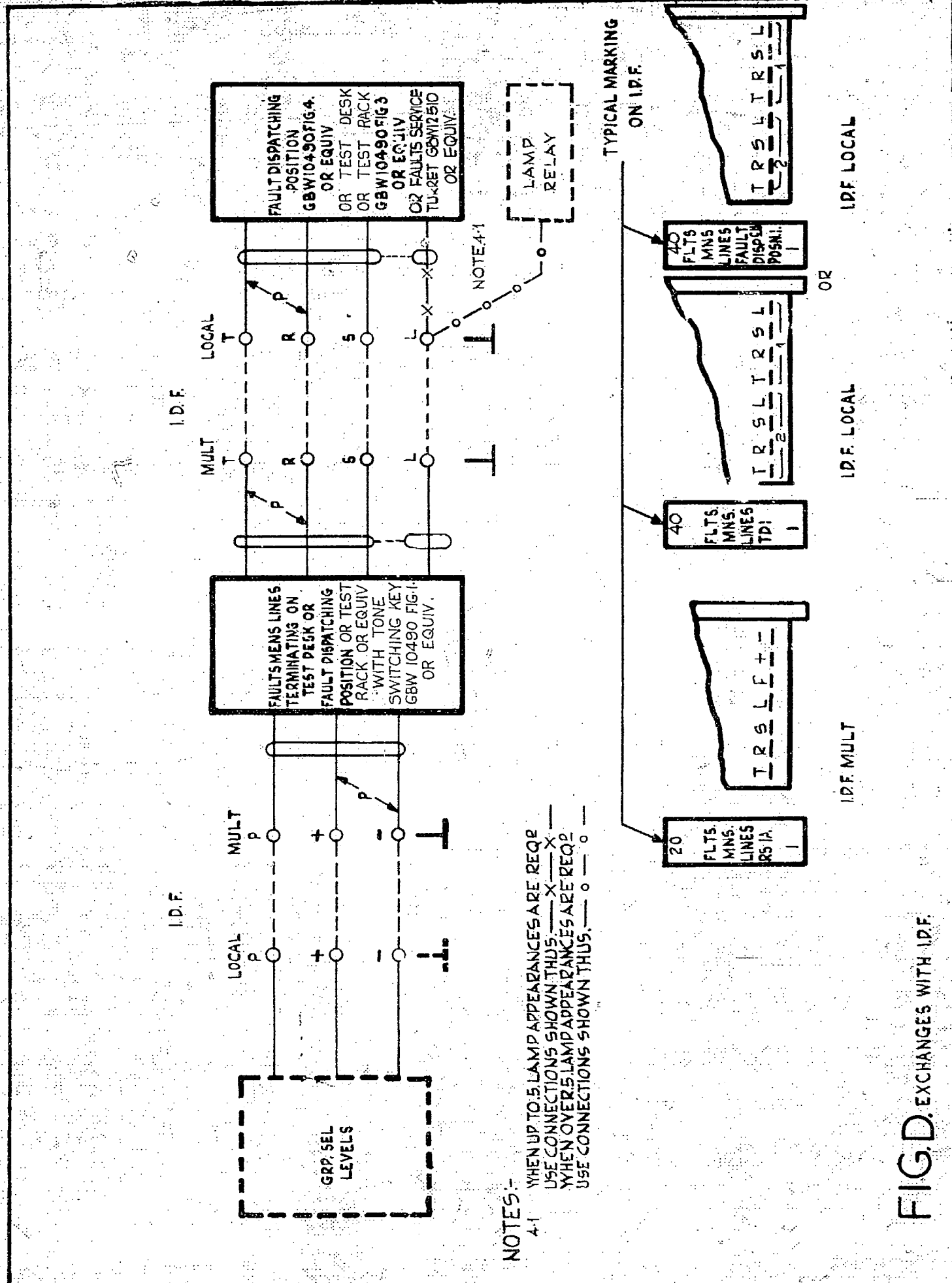


FIG. 3. EXCHANGES USING T.D.F. & I.D.F. FOR NEW WORK SEE FIG. E.

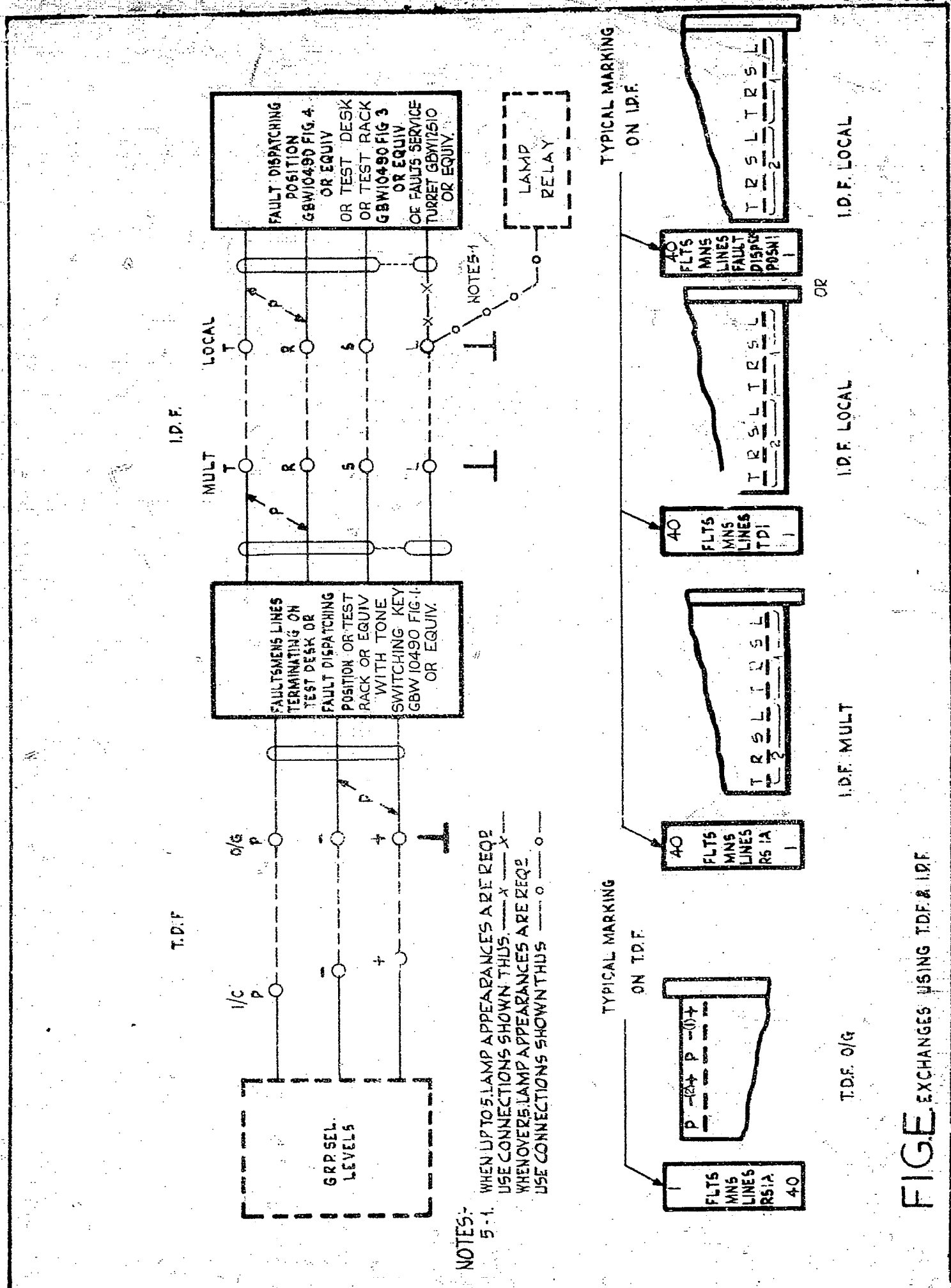
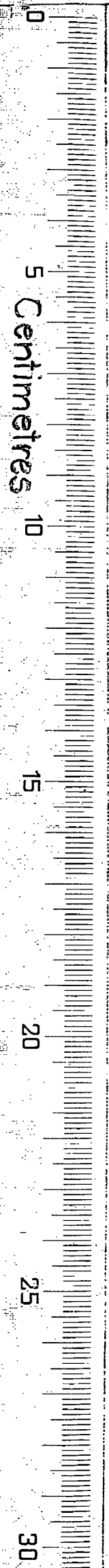
GBX 10490
 SHEET 3-5



NOTES:-
 4-1 WHEN UP TO 5 LAMP APPEARANCES ARE REQD USE CONNECTIONS SHOWN THUS: — X — X —
 WHEN OVER 5 LAMP APPEARANCES ARE REQD USE CONNECTIONS SHOWN THUS: — 0 — 0 —

| | | | | | | | | |
|-----------------------------------|--|--|--|---------------|-----------------|--------|--|-----------|
| AMENDMENT PARTICULARS | | | | ISSUE | DATE | APPD | REF | H |
| REF TO TEST RACK ADDED (8006) | | | | 4 | 24-3-71 | B.S.H. | FAULTSMENS LINES TERMINATING ON TEST DESK OR RACK OR FAULT DISPATCHING POSITION OR EQUIV. WITH TONE SWITCHING KEY. | H |
| LAMP LEADS WERE NOT SHOWN (34022) | | | | 3 | 26-8-60 | AK | | |
| | | | | 2 | | | | |
| N.Z.P.O. | | | | DRAWN N.W. | CHECKED R.W. | WIRING | CIRCUIT | GBX 10490 |
| | | | | | | | | SHEET 4-5 |

FIG. D. EXCHANGES WITH I.D.F.



NOTES:-
 5-1. WHEN UP TO 5 LAMP APPEARANCES ARE REQD USE CONNECTIONS SHOWN THUS: x x
 WHEN OVER 5 LAMP APPEARANCES ARE REQD USE CONNECTIONS SHOWN THUS: o o o

| | | | | | |
|-----------------------------------|--|---------------|------------------------|--------|--|
| REF. TO TEST RACK ADDED (8006) | | 4 | 24.3.71 | B.S.H. | FAULTSMENS LINES TERMINATING ON TEST DESK OR RACK OR FAULT DISPATCHING POSITION OR EQUIV. WITH TONE SWITCHING KEY. |
| LAMP LEADS WERE NOT SHOWN (34022) | | 3 | 26.8.60 | OK | |
| | | 2 | | | |
| AMENDMENT PARTICULARS | | ISSUE | DATE | APPD | REF |
| NZPO | | DRAWN N.W. | CHECKED [Signature] | WIRING | CIRCUIT |
| GBX 10490 | | | | | H |
| | | | | | SHEET 5-5 |