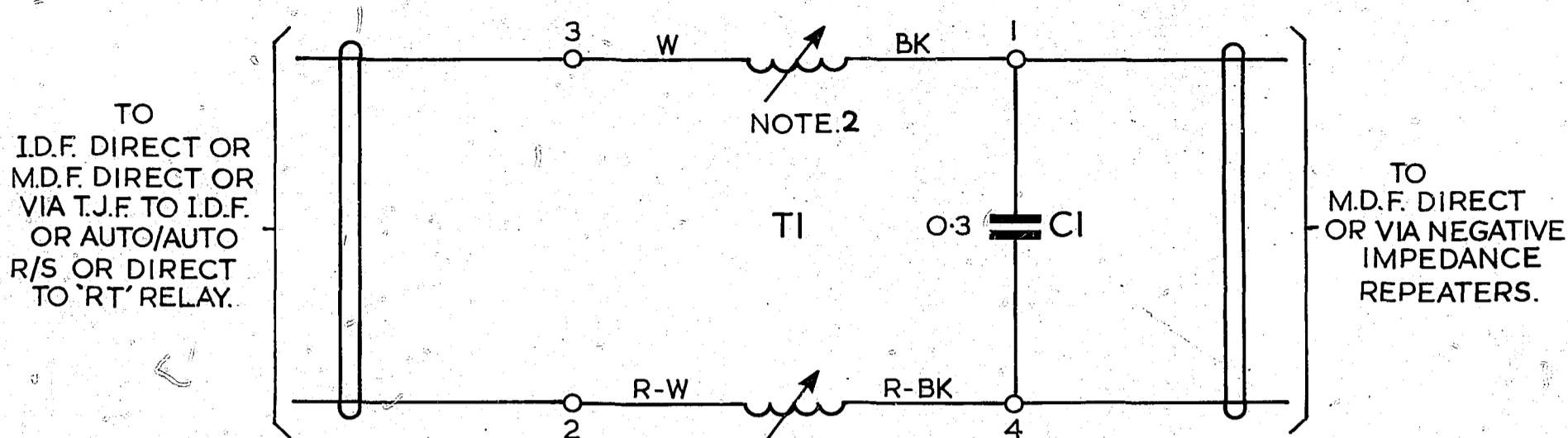


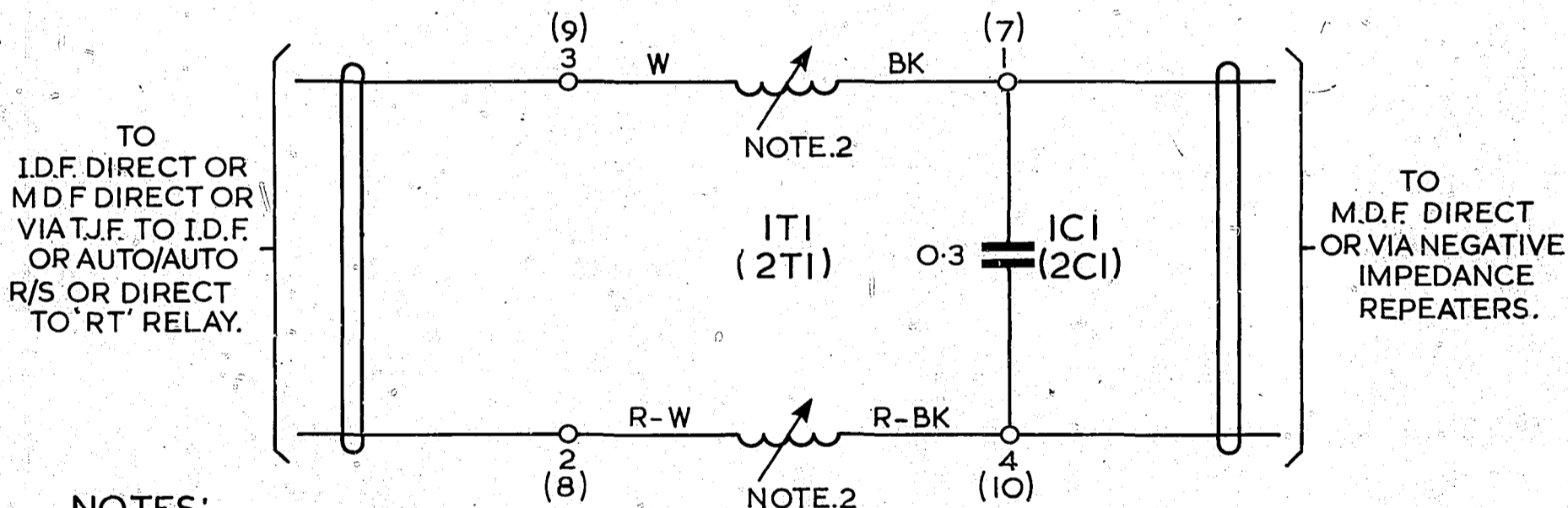
**FIG.1**  
BUILDING OUT NETWORK.  
UNIT ASSEMBLY.  
1 CIRCUIT.



**NOTES:-**

1. THE COMBINED VALUES OF BOTH WINDINGS OF TI IS 44MH.

**FIG.2**  
BUILDING OUT NETWORK.  
2 UNIT ASSEMBLY.  
2 CIRCUITS  
NOTE.1



**NOTES:-**

1. NUMBERS IN BRACKETS REFER TO 2ND CIRCUIT.
2. THE COMBINED VALUES OF BOTH WINDINGS OF TI IS 44MH.

				REF:-		50v	H
				(122773)	1	27.5.74	B5H
<b>AMENDMENT</b>				ISS.	DATE	APP.	
<b>A3</b>	DRN	DJT	ENG.	MATERIAL		FINISH	
	TR		MTH				
	CHK		DRFT				
	ENG		DEPT.	TITLE		TOLERANCES (UNLESS OTHERWISE STATED)	
<b>BUILDING OUT NETWORKS</b>				THREE PLACE DECIMAL DIMNS ± ..... TWO PLACE DECIMAL DIMNS. ± ..... FRACTIONAL DIMENSIONS ± ..... OTHER REQUIREMENTS TO E.S.I.5			
(900 ohms IMPEDANCE TO EXCH.)							
NZPO				<b>GBW20220</b>			

