

FIG. 4A
O/G 3 WIRE CIRCUIT

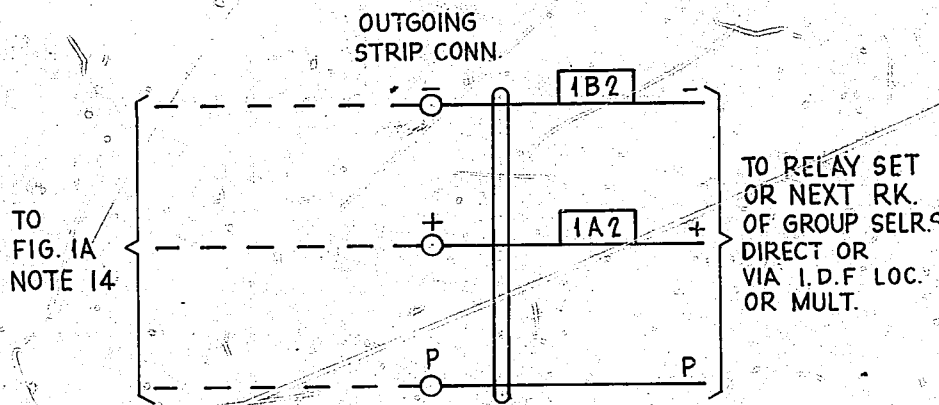


FIG. 4B
TIE CIRCUITS BETWEEN RACKS

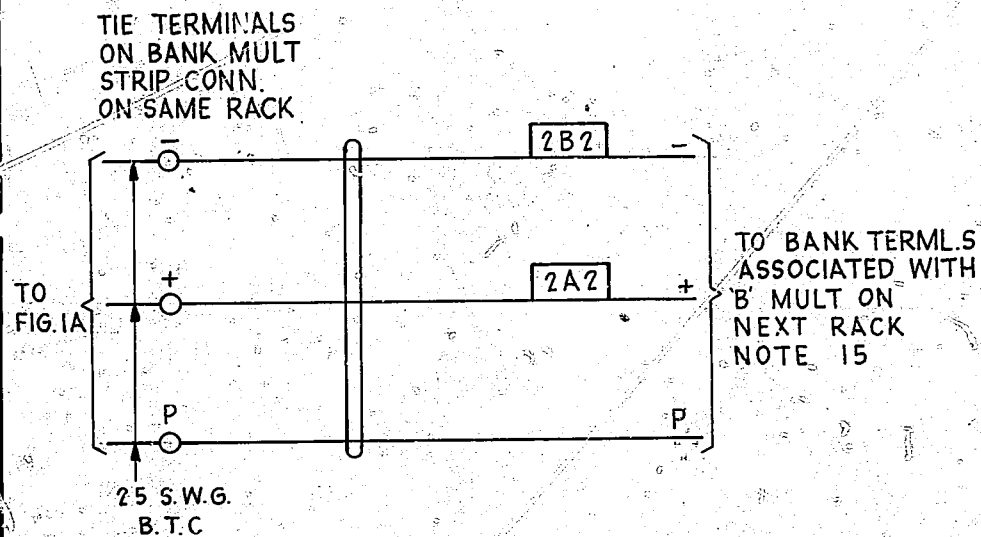


FIG. 4C
11TH STEP TIE CIRCUITS BETWEEN RACKS

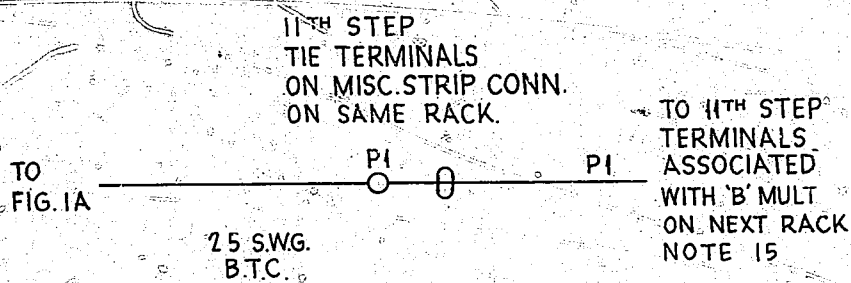


FIG. 4D
O/G 3 WIRE CIRCUITS (WITH FULL AVAILABILITY)

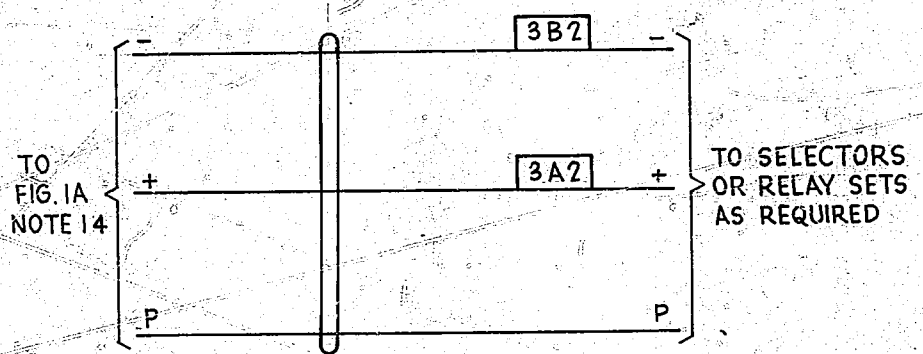


FIG. 4E
O/G 5 WIRE CIRCUIT

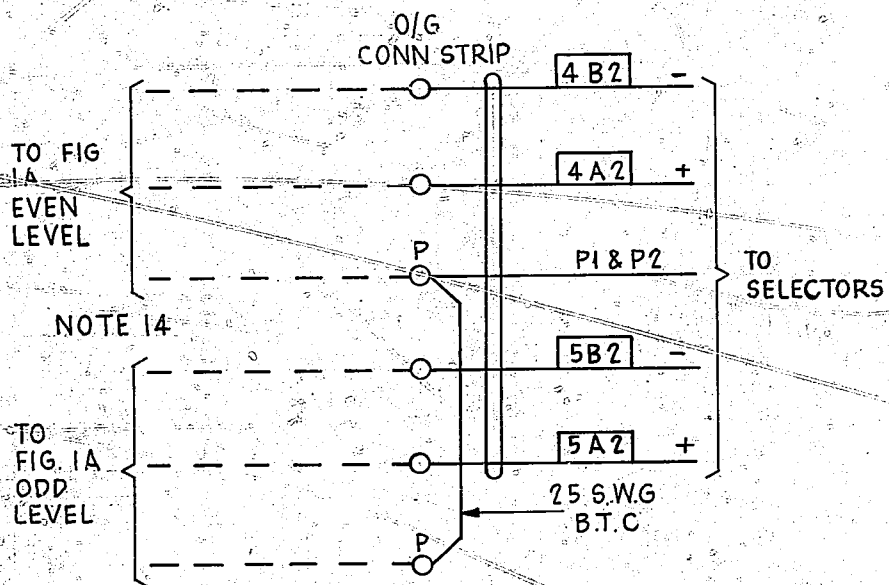
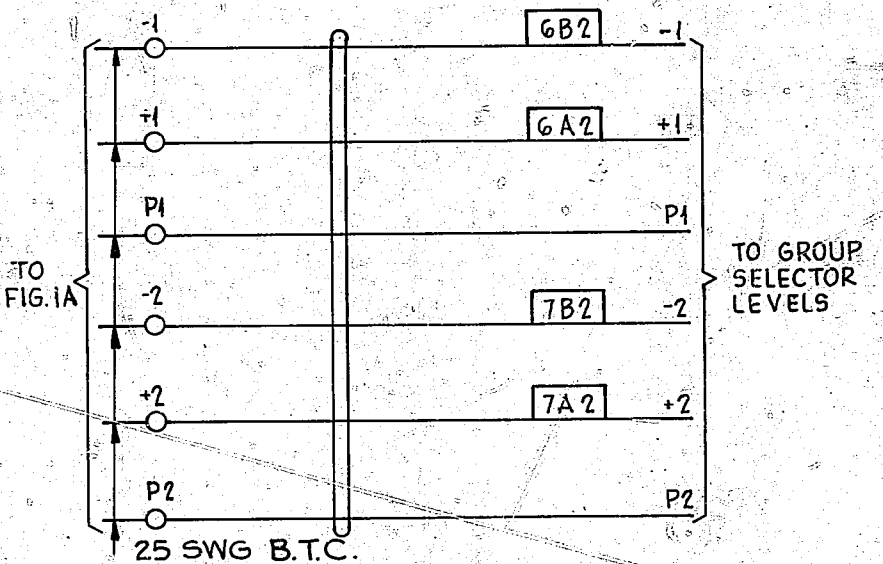


FIG. 4F
TIE CIRCUITS D.S.R. TO GROUP SELECTOR LEVEL



NO CHANGE SHT.1 AMD.	(054282)	2E	7-8-84	GCG	
NO CHANGE SHT.1 AMD.	(042448)	2D	16-4-84	GCG	
NO CHANGE SHT.1 AMD.	(54396)	2F	13-11-84		
NO CHANGE SHT.1 AMDT	(126165)	2A	6-9-76	C.J.W.	
NO CHANGE SHT.1 AMD.	(122206)	2	28-1-74	B.S.H.	
WAS GBW 10424 MOD B	(99627)	1	2-4-73	B.S.H.	
AMENDMENT		ISS.	DATE	APPD.	

A3
A4

DISCRIMINATING SELECTOR
REPEATED REGULAR & PARTY LINE
WITH GRADING FACILITY
200 OUTLET, 2000 TYPE WITH OVERFLOW
ROUTING FACILITY.

NZPO

SIZE **S**

GBW 20184

SHEET 2-2