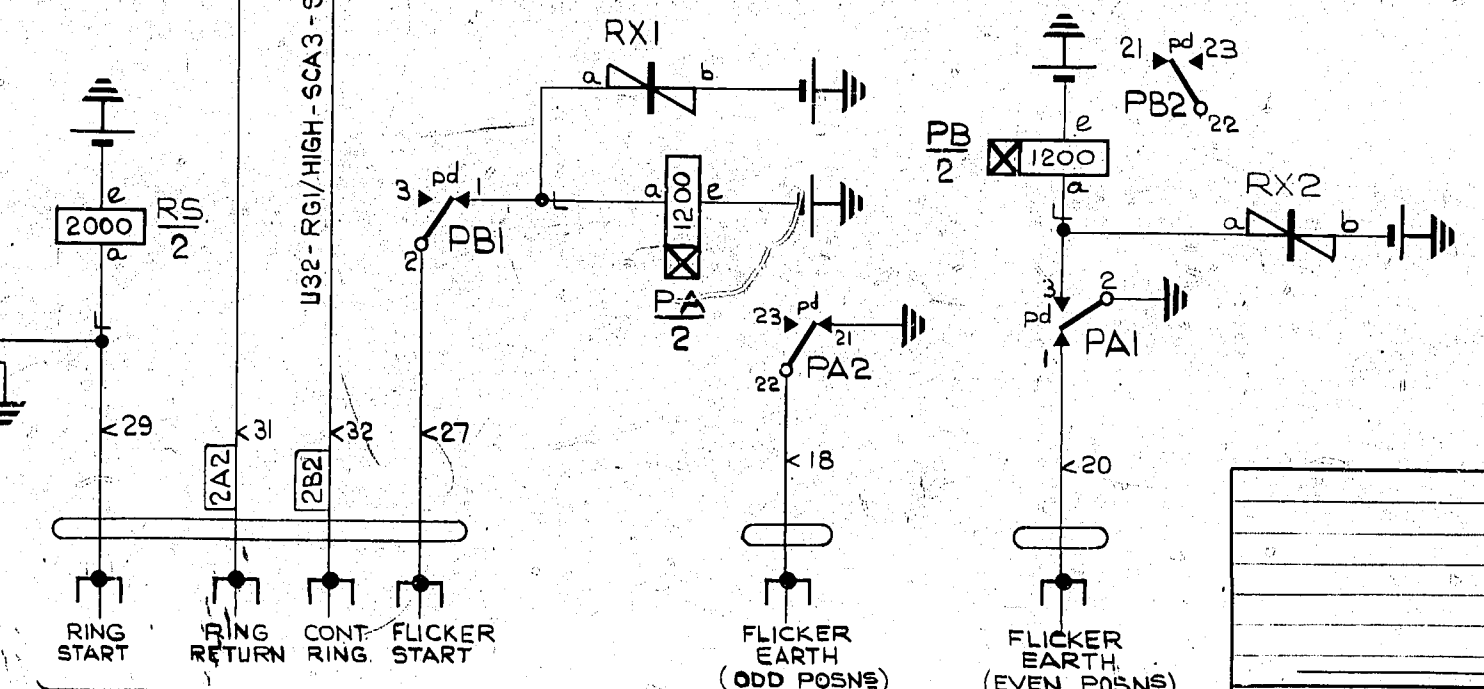
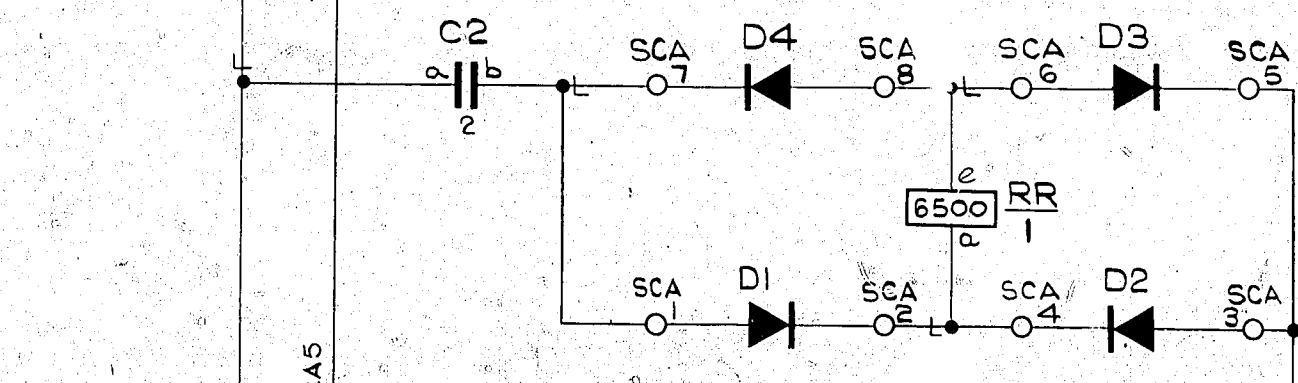
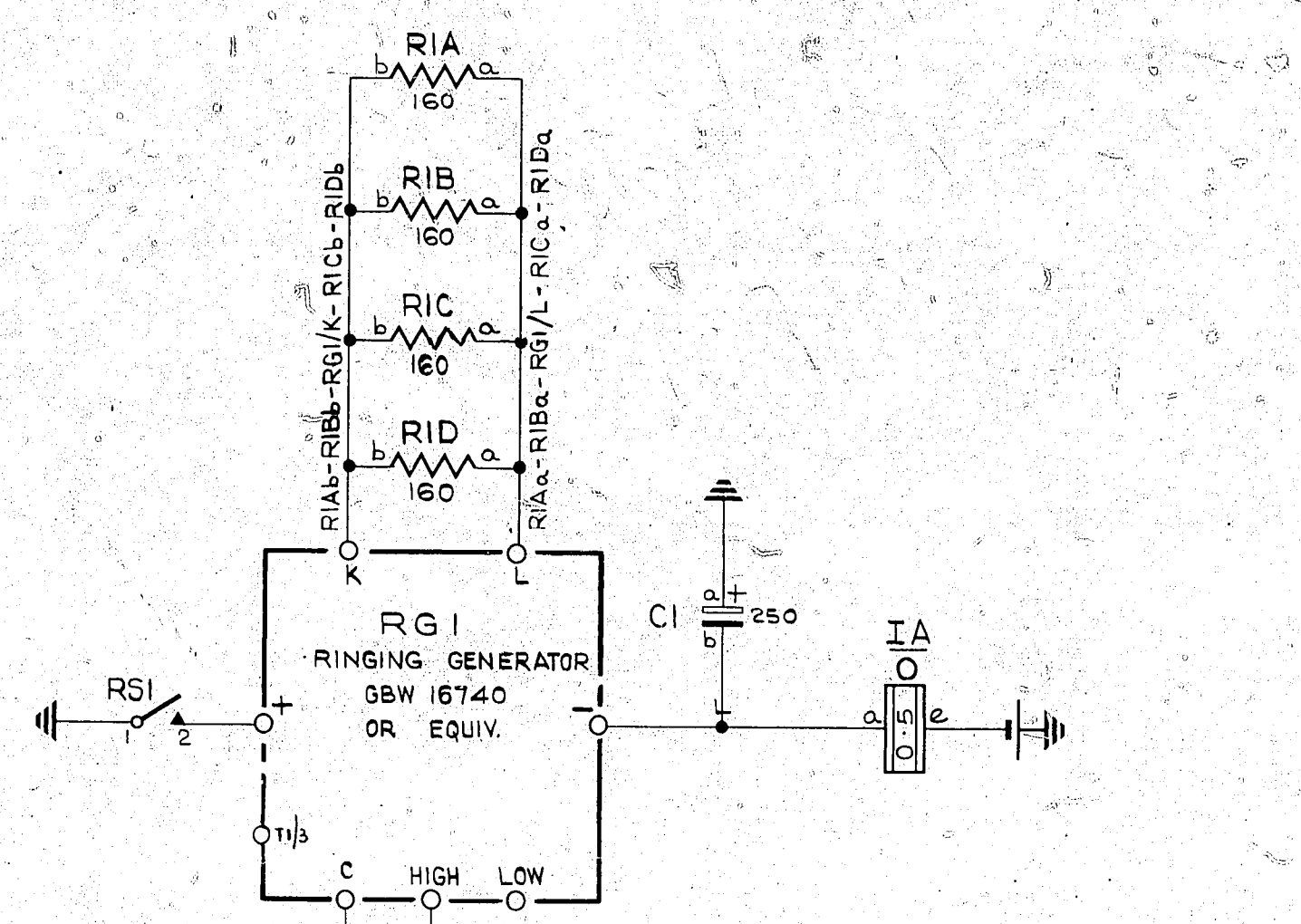


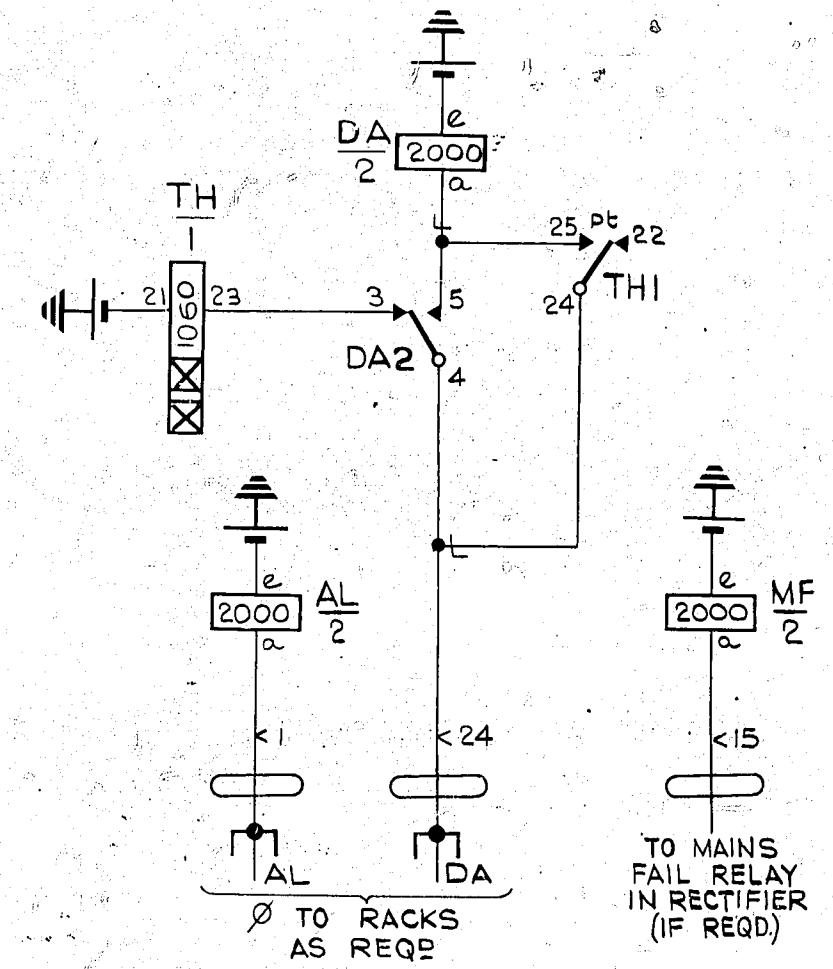
EXPLANATORY
PART OF C.T.S. ALARM
CIRCUIT GBW.14221 OR EQUIV.

EXPLANATORY
PART OF MANUAL BOARD FUSE ALARM
CIRCUIT GBW.15201 OR EQUIV.



- NOTES:-
- FUSING:-
RINGING BATTERY (U14) 1.5A
OTHER BATTERIES (U12) 1.5A
 - ALL WIRING TO BE .25SWG UNLESS OTHERWISE SPECIFIED.
 - Ø FOR ROUTING SEE RELEVANT COMMON SERVICES DIAGRAM.

- ETH. R U11-AL21-AL1-PA21-PA2-RS21-RS1-C1a-MF21-MF1-FA21-FA24-FA1-FA4-DA1-TJ1
- BATT V U12-A02-AL2-PA2-PB2-RS2-MF2-FA2-TH-21-DA2-R2b
- BATT V U14-IA2
- BATT V FUSE 1B2 U12
- BATT V FUSE U14
- ETH R ETH BAR 1A2 U11



MANUAL
RING & ALARM
CIRCUITS
50/1200 LINE P.A.B.X.

AMENDMENT PARTICULARS	ISSUE	DATE	APPO	REF.	SIZE: M	50 V	W
(8490)	1	17-5-71	G.F.E.				

GBW 20140