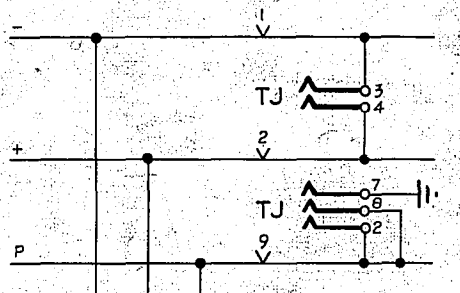
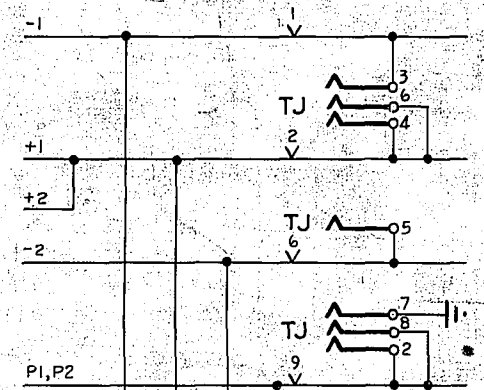


0
5
10
15
20
25
30
Centimetres

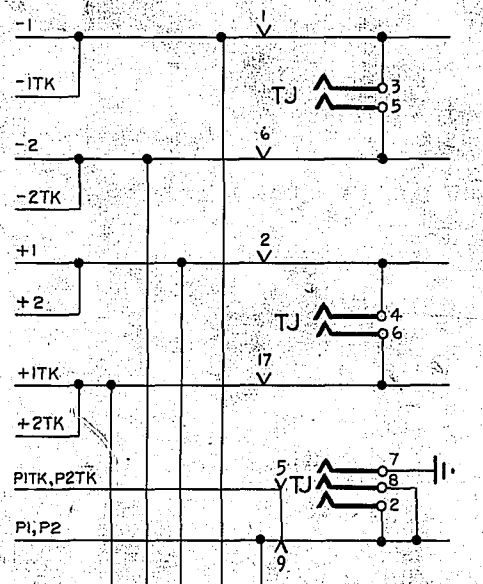
PART OF GROUP SELR OR D.S.R.
EXPLANATORY ONLY



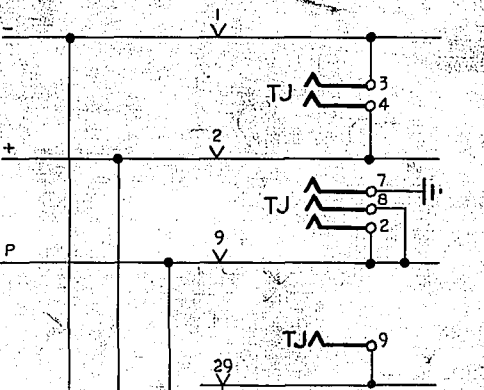
PART OF FINAL SELECTOR
200 LINE ORDINARY & 2/10 PBX
EXPLANATORY ONLY



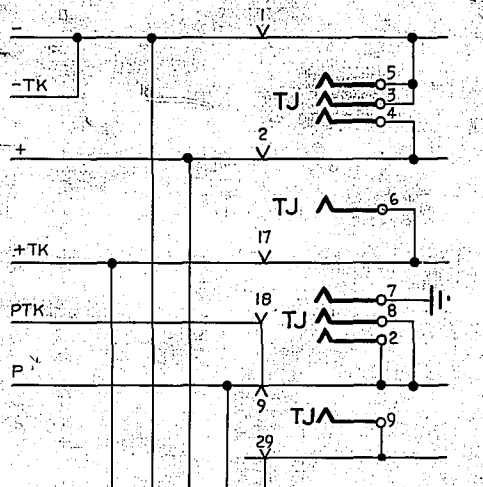
PART OF FINAL SELECTOR
200 LINE ORD. & 2/10 PBX WITH TOLL FACILITIES
EXPLANATORY ONLY



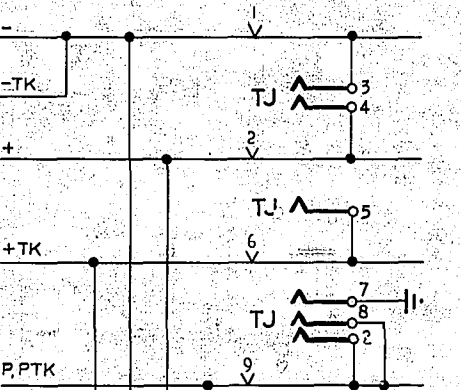
PART OF FINAL SELECTOR
100 LINE RURAL ORDINARY
EXPLANATORY ONLY



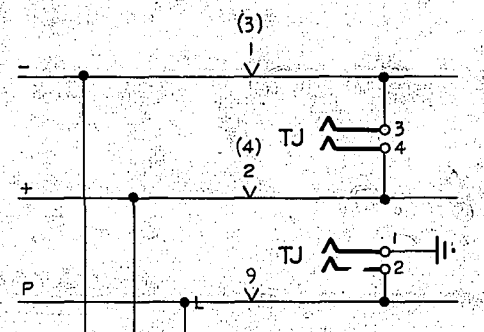
PART OF FINAL SELECTOR
100 LINE RURAL ORDINARY WITH TOLL FACILITIES
EXPLANATORY ONLY



PART OF FINAL SELECTOR
200 LINE 11-20 PBX WITH TOLL FACILITIES
EXPLANATORY ONLY



PART OF SELECTOR LEVEL RELAY SET
EXPLANATORY ONLY



- NOTES**
1. FUSING: FIGS. 11A, 11B, 11C & 14 FUSED WITH ASSOCIATED BATTERY JACKS ON R.H. UPRIGHT.
 2. ALL WIRING TO BE 22 SWG.
 3. SPRINGS 1 & 3, 2 & 4 AND 5 & 7 OF JACK ON RACK MUST BE INSULATED.
 4. CONNECTION SHOWN — | — | REQUIRED ONLY ON JACKS ASSOCIATED WITH RURAL FINAL SELECTORS WITH TOLL FACILITIES.

FIG. 1 TEST JACK

1 PER GROUP SELECTOR
1 PER D.S.R.
FRONT

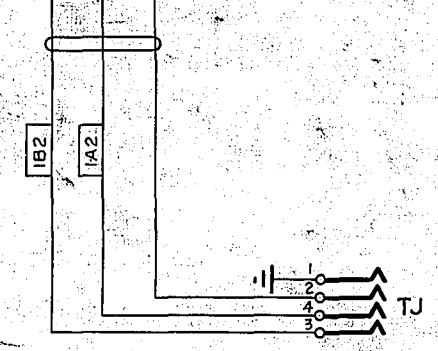


FIG. 2 TEST JACK

1 PER FINAL SELECTOR ORDINARY AND 2/10 PBX
FRONT

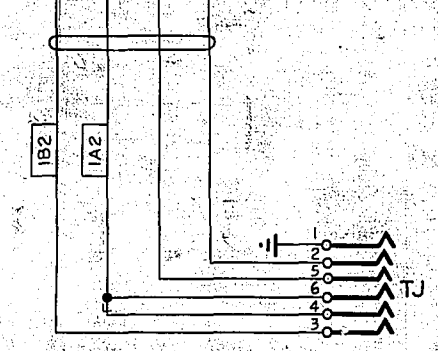


FIG. 3 TEST JACK

1 PER FINAL SELECTOR ORD. & 2/10 PBX WITH
TOLL FACILITIES
FRONT

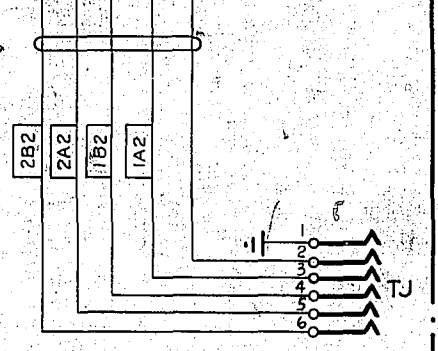


FIG. 4 TEST JACK

1 PER FINAL SELECTOR RURAL ORDINARY
FRONT

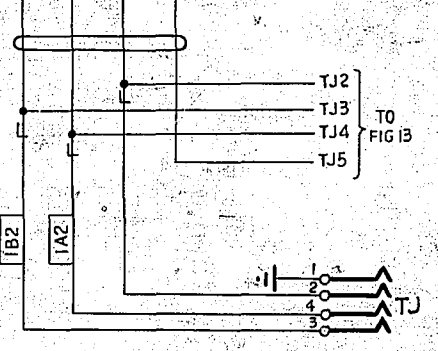


FIG. 5 TEST JACK

1 PER FINAL SELECTOR RURAL ORDINARY WITH
TOLL FACILITIES
FRONT

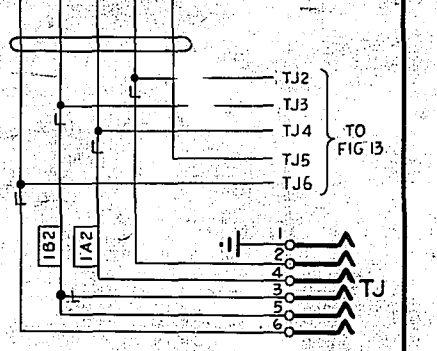


FIG. 6 TEST JACK

1 PER FINAL SELECTOR 11-20 PBX WITH TOLL
FACILITIES
FRONT

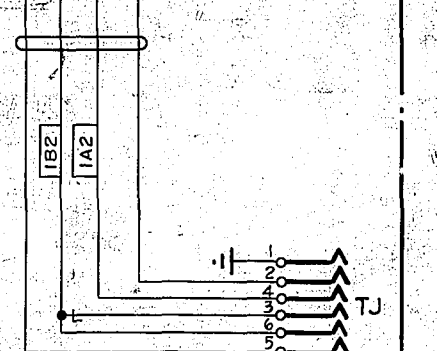
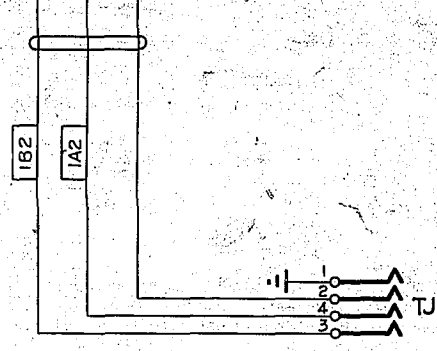
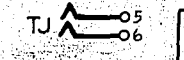


FIG. 7 TEST JACK

1 PER SELECTOR LEVEL RELAY SET CIRCUIT
FRONT
EARTH R. ETH. BAR - TJI ETC.



EARTH R. ETH. BAR - TJI ETC.



TJ
6

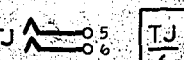
EARTH R. ETH. BAR - TJI ETC.

TJ
6

EARTH R. ETH. BAR - TJI ETC.

TJ
6

EARTH R. ETH. BAR - TJI ETC.



TJ
6

EARTH R. ETH. BAR - TJI ETC.

TJ
6

EARTH R. ETH. BAR - TJI ETC.

TJ
6

EARTH R. ETH. BAR - TJI ETC.

WAS SHEET 1-2				(81375)		2 2-10-67		6/8		EXTERNALLY MOUNTED JACKS DUST-PROOFED RACKS (GEO-THERMAL AREAS)	
AMENDMENT PARTICULARS				ISSUE DATE		3-3-67		DNB		SIZE M 50V. E	
NZPO				DRAWN		CH'K'D		WIRED		CIRCUIT	
GBW 19400										SHEET 1-3	

0
5 Centimetres
10
15
20
25
30

PART OF OUTGOING RELAY SET
N.Z. S.S.A.C. Nos 2T & 3T
EXPLANATORY ONLY

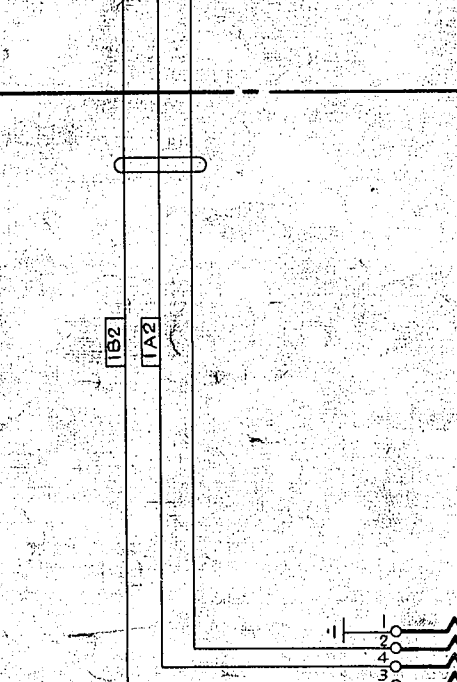
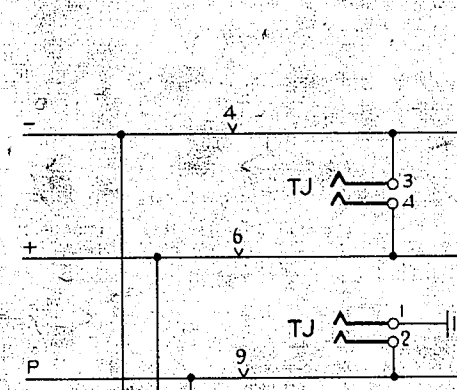


FIG 8 TEST JACK

1 PER O/G RELAY SET N.Z. S.S.A.C. Nos 2T & 3T
FRONT

PART OF INCOMING RELAY SET
N.Z. S.S.A.C. Nos 2T & 3T
EXPLANATORY ONLY

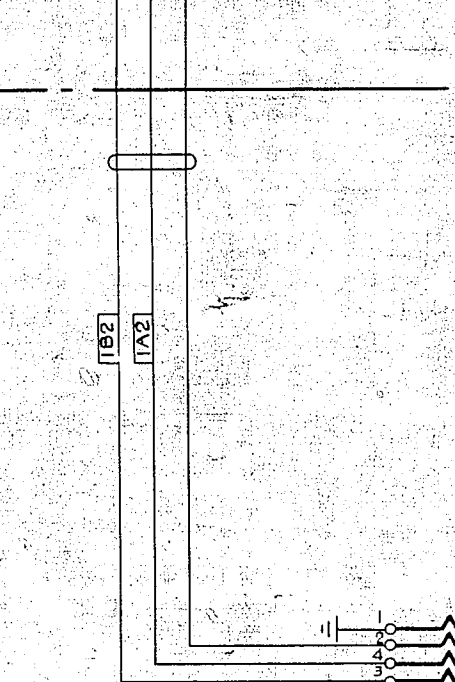
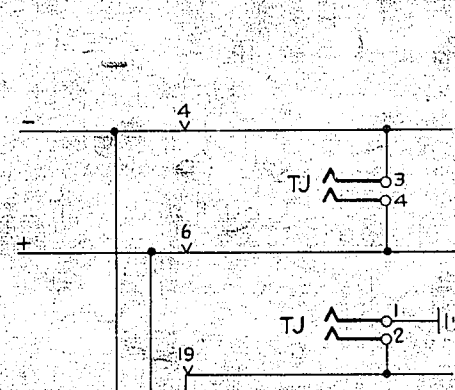


FIG 9 TEST JACK

1 PER I/C RELAY SET N.Z. S.S.A.C. Nos 2T & 3T
FRONT

PART OF HOWLER JACK CIRCUIT
EXPLANATORY ONLY

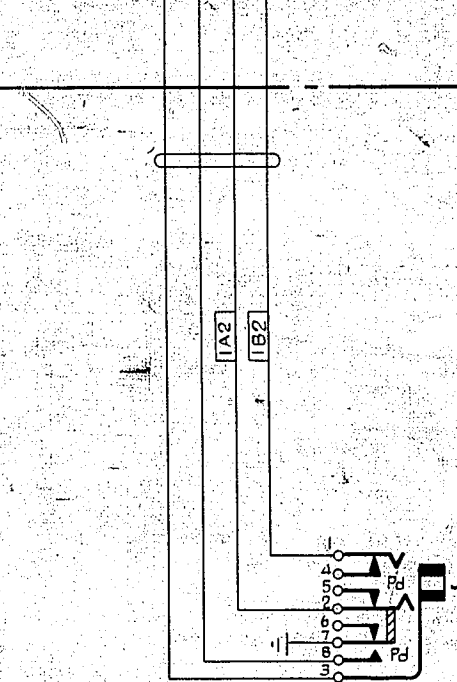
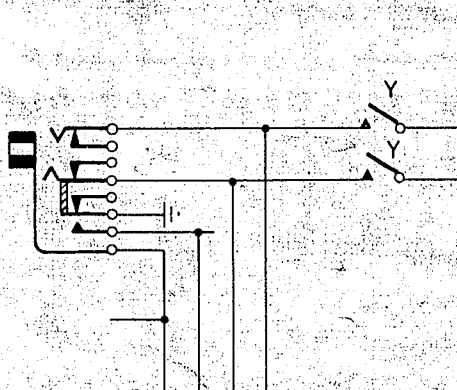


FIG 10 HOWLER JACK

1 PER 1ST SELECTOR RACK
1 PER D.S.R. RACK
1 PER FINAL SELECTOR RACK
1 PER COMPOSITE U/S - F/S RACK
FRONT

BATTERY JACKS
EXPLANATORY ONLY

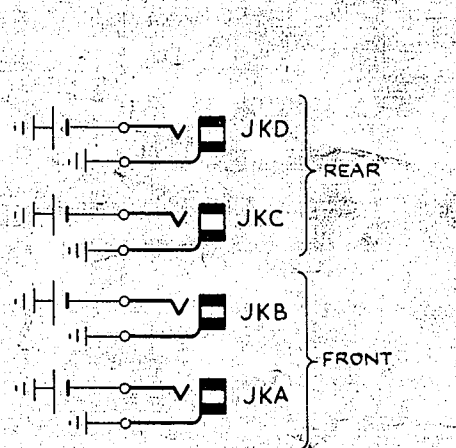


FIG 11C BATTERY JACKS
REAR OF ODD RACKS IN SUITE

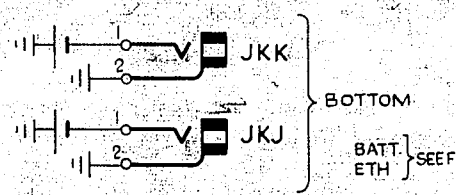


FIG 11B BATTERY JACKS
FRONT OF ODD RACKS IN SUITE
REAR OF EVEN RACKS IN SUITE

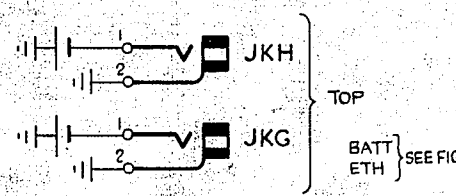
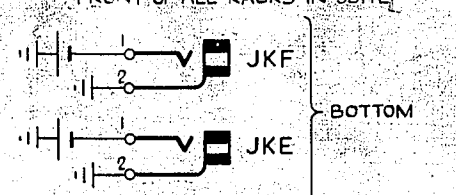


FIG 11A BATTERY JACKS
FRONT OF ALL RACKS IN SUITE



BATT. JKB1 (R.H. UPRIGHT)	1B2	JKH1 JKG1
EARTH. JKB2 ()	1A2	JKH2 JKG2
BATT. JKD1 ()	2B2	TJ24 FIG 14 JKF1 (JKK1) JKE1 (JKJ1)
EARTH. JKD2 ()	2A2	TJ21 FIG 14 JKF2 (JKK2) JKE2 (JKJ2)

ROUTINER RESET JACK
EXPLANATORY ONLY

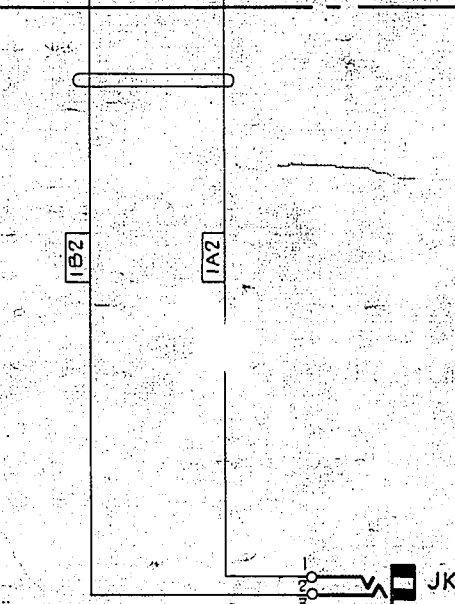
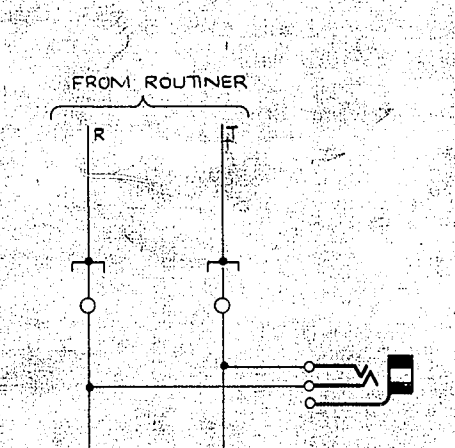


FIG 12 ROUTINER RESET JACK

1 PER GROUP SELECTOR RACK
1 PER FINAL SELECTOR RACK
1 PER A/A RELAY SET RACK
1 PER DSR RACK
1 PER COMPOSITE U/S - F/S RACK
FRONT

ROUTINER RESET JACK
EXPLANATORY ONLY

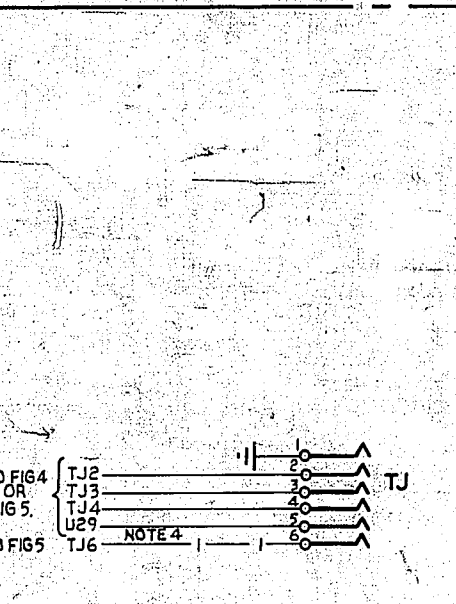


FIG 12 ROUTINER RESET JACK

1 PER GROUP SELECTOR RACK
1 PER FINAL SELECTOR RACK
1 PER A/A RELAY SET RACK
1 PER DSR RACK
1 PER COMPOSITE U/S - F/S RACK
FRONT

PART OF ROUTINE TEST LINE JACK RURAL FINAL SELECTORS
EXPLANATORY ONLY

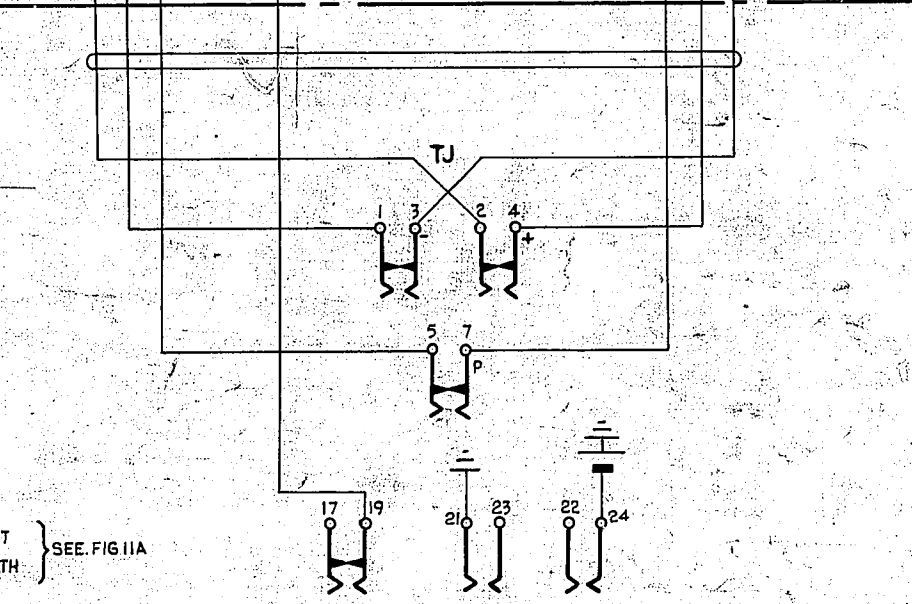
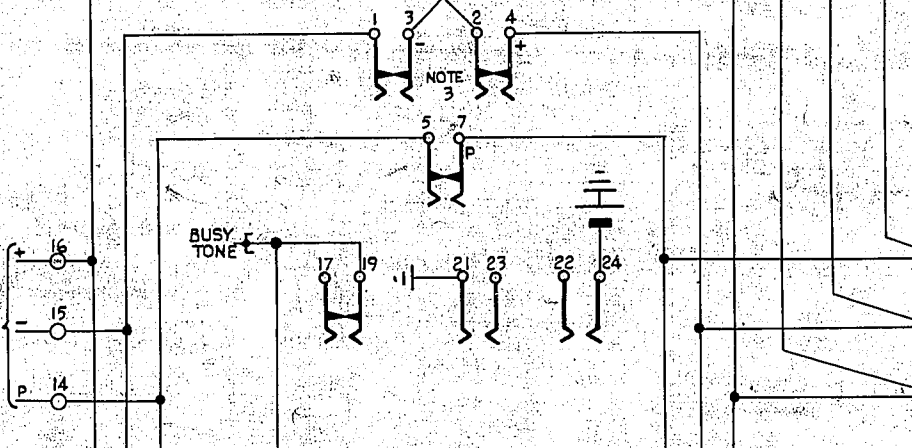


FIG 14 ROUTINE TEST LINE JACK

1 PER RURAL FINAL SELECTOR MULTIPLE
FRONT

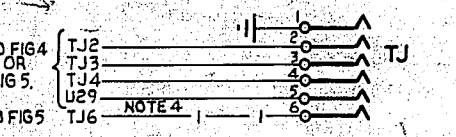
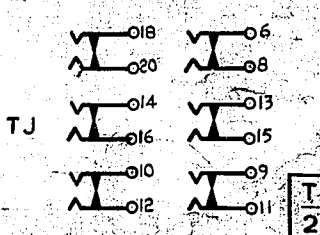


FIG 13 TESTER ACCESS JACK

1 PER FINAL SELECTOR RURAL

WAS SHEET 2-2				(81375)	2	2-10-67	2/8
AMENDMENT PARTICULARS				ISSUE	DATE	APP.	

