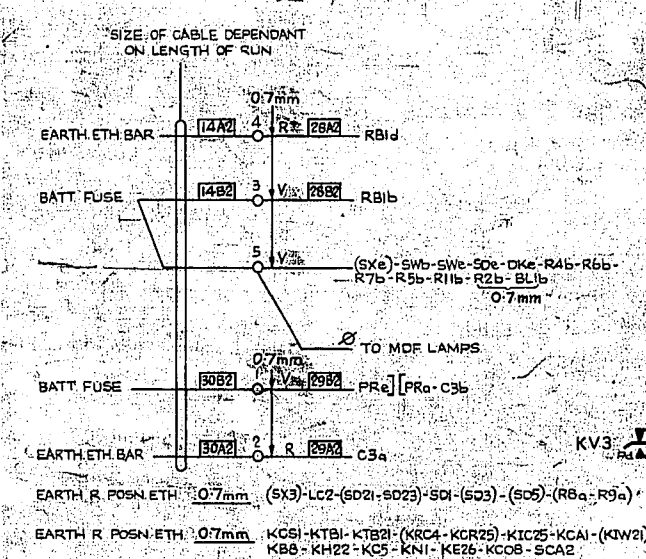
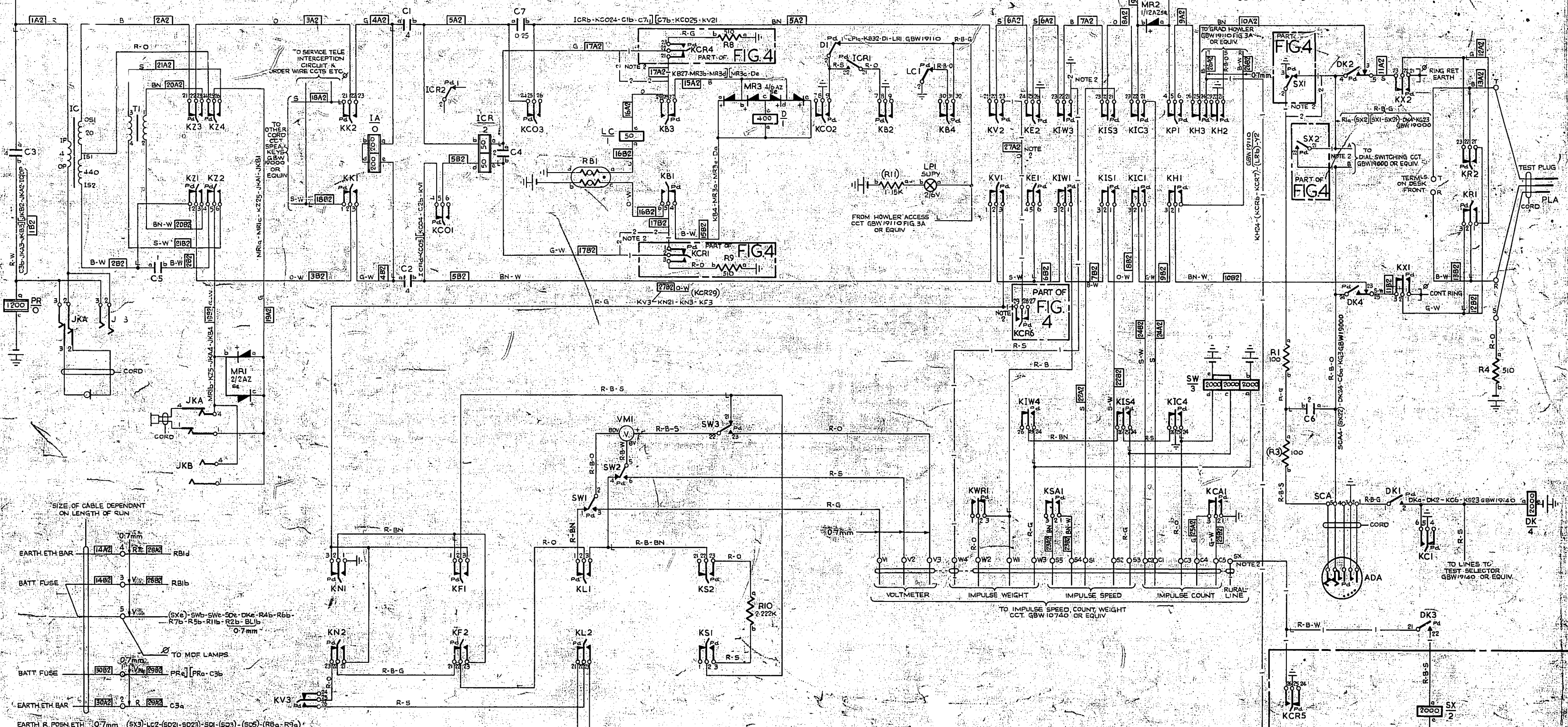
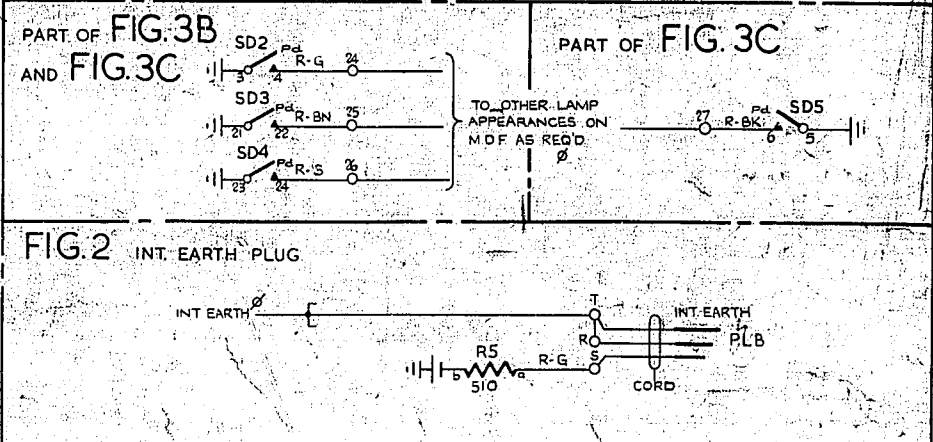
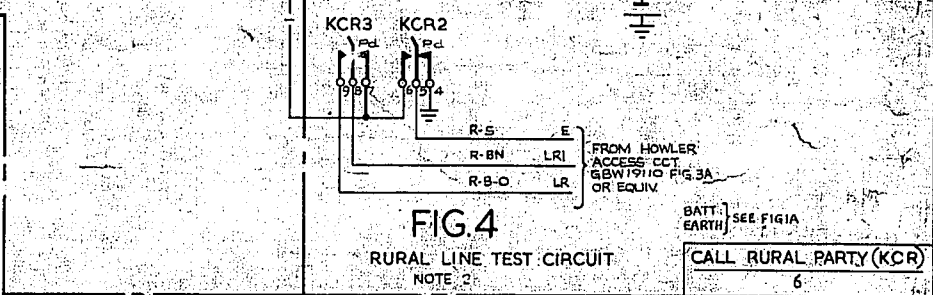
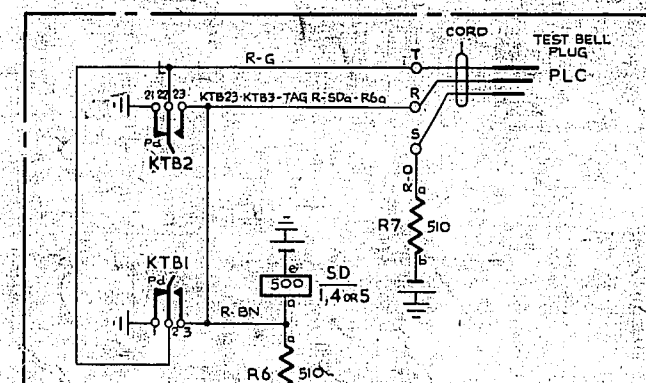
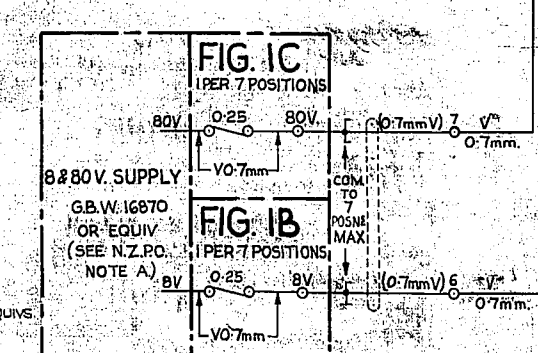


FIG. 1A TEST CIRCUIT



- NOTES
1. FUSING 1.5A PER TEST CORD CCT. FUSING 1.5A PER TELEPHONE COT.
 2. WHEN RURAL LINE TEST FACILITIES ARE SPECIFIED, PROVIDE FIG. 4 AND CONNECTIONS AND COT CONNECTIONS SHOWN.
 3. DELETED.
 4. ALL WIRING NOT OTHERWISE SPECIFIED TO BE 25 SWG.
 5. FOR WIRING SEE GBW 11480 (TEST DESK) OR GBW 15970 (RACK TYPE M.D.F.) OR EQUIV.
 6. ON SOME EARLY EQUIPMENT BATTERY WIRING IS B.K.



NZPO NOTE A
TEST SUPPLY IS EITHER BATTERIES OR 8/80 VOLT SUPPLY UNIT GBW 16870 WHEN BATTERY REPLACEMENTS ARE REQUIRED THEY ARE TO BE REPLACED BY 8/80 VOLT SUPPLY UNITS GBW 16870.

| | | | | | | | | | | | |
|---------------------|----------------------|----------------------|---------------------|---------------------|-----------------|---------------------------|----------------------------------|--------------------|--------------------|---------------------|--------------------|
| KCO4 - KP2 | KCA2 | KSA1 | KWR2 | KC2 | KIW2 | KIS2 | KIC2 | KCS2 | | | |
| 0 0 0 0 0 | 0 0 0 0 0 | 0 0 0 0 0 | 0 0 0 0 0 | 0 0 0 0 0 | 0 0 0 0 0 | 0 0 0 0 0 | 0 0 0 0 0 | 0 0 0 0 0 | | | |
| 23 22 21 | 24 25 26 | 23 22 21 | 23 22 21 | 23 22 21 | 24 25 26 | 23 22 21 | 23 22 21 | 23 22 21 | | | |
| RING (XX) DIAL (KC) | RECEIVE NEG. (KN) | EARTHING (KE) | SPEAK (KK) | HOWLER (KH) | BATT. FEED (KB) | BY SCALE (KL) | VOLTMETER (KV) | WEIGHT RESET (KWR) | SPEED ADJUST (KSA) | TRANS. CUT-OFF (KZ) | COUNT ADJUST (KCA) |
| 2 | 2 | 2 | 2 | 3 | 4 | 2 | 3 | 2 | 4 | 2 | 2 |
| VOLTMETER REV. (KF) | VOLTMETER SHUNT (KS) | IMPULSE WEIGHT (KIW) | IMPULSE SPEED (KIS) | IMPULSE COUNT (KIC) | X PARTY (KP) | CALL SHARED SERVICE (KCS) | SUBS. BATT. & HOLD CUT-OFF (KCO) | LINE REV. (KR) | | | |

| | | | |
|---|------------|---------|---|
| TEST DESK | | | |
| NZPO NOTE A ADDED | (21C) | 2A | 19-11-71 |
| 8/80V SUPPLY UNIT (SILICAM) NOTE 3 (SEE NOTE 4) (21C) | | 2 | 19-11-71 |
| | (69-73) | 1 | 3-3-67 |
| AMENDMENT PARTICULARS | ISSUE DATE | APP'D | REF. G.S. 1.31.7-10.17.8 MOD. (28V) (42519) |
| N.Z.P.O. | DRAWN | CHECKED | WIRING IN FINAL |

5 Centimetres

O.M.S.