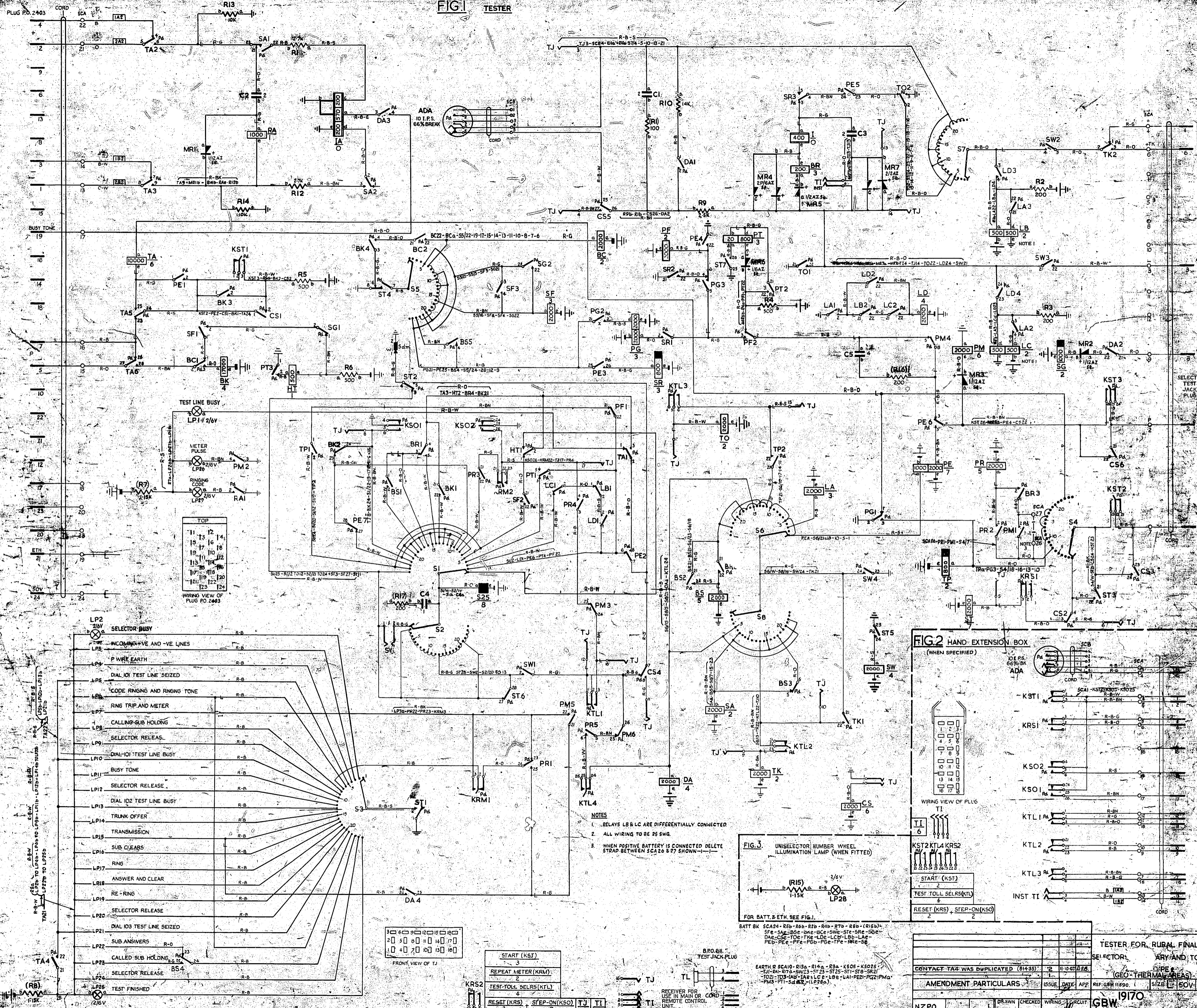


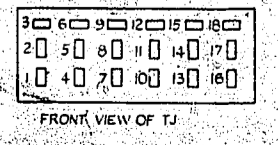
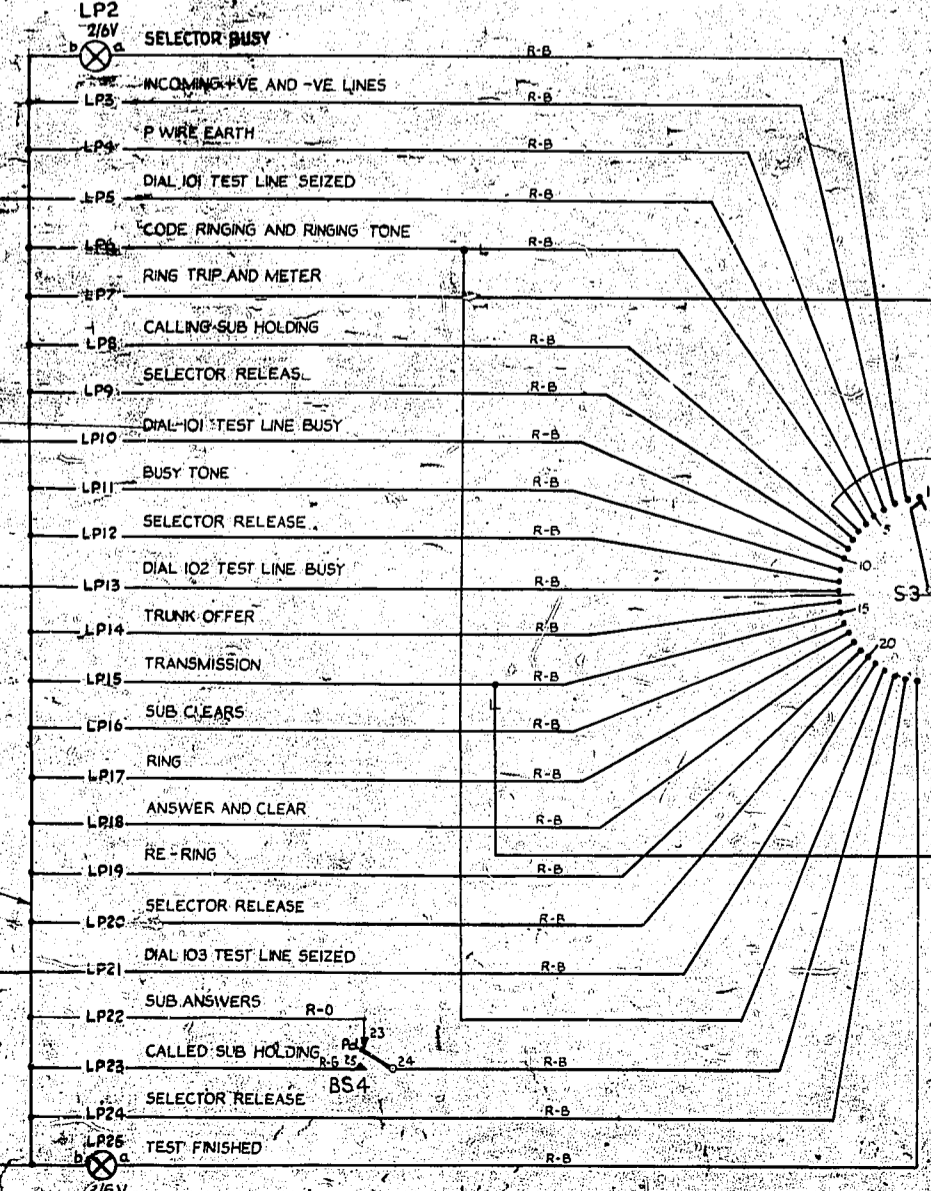
# FIG. 1 TESTER



TOP

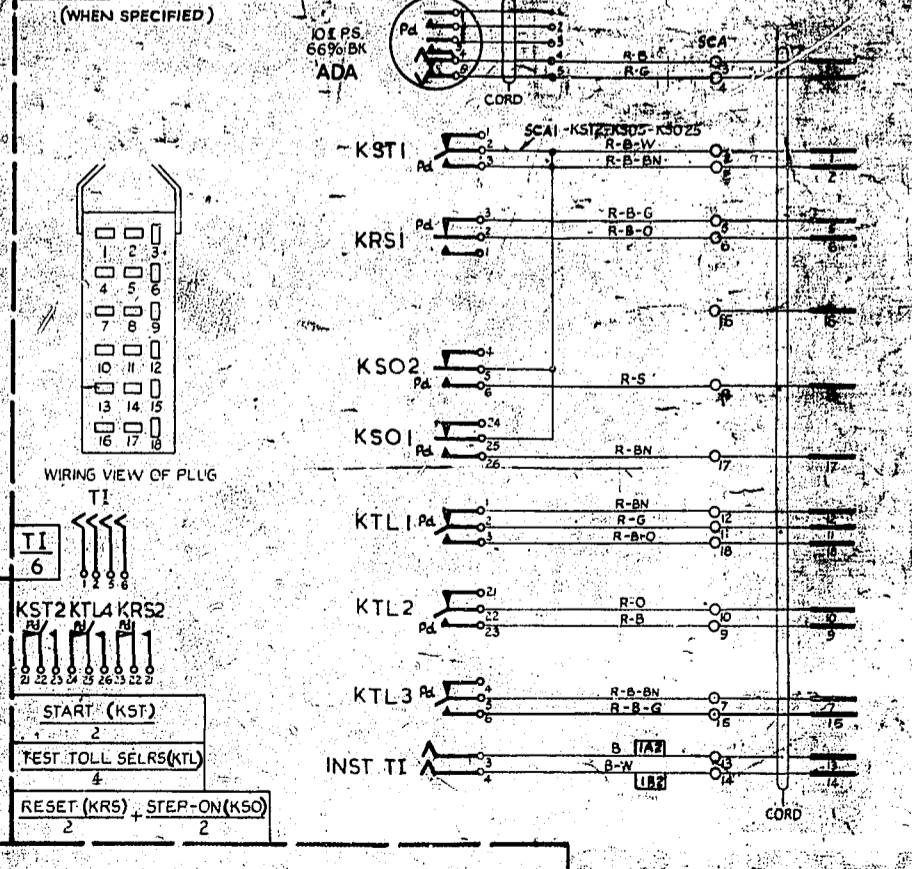
11	12	14
15	16	18
19	17	13
10	11	12
13	14	15
16	17	18
19	20	21
22	23	24

WIRING VIEW OF PLUG PO. 2443

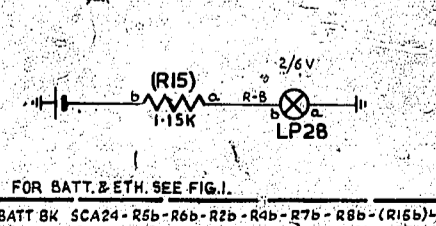


START (KST)	3
REPEAT METER (KRM)	2
TEST TOLL SELRS (KTL)	4
RESET (KRS) - STEP-ON (KSO)	2
TJ	18
TI	6

## FIG. 2 HAND-EXTENSION BOX



## FIG. 3 UNISELECTOR NUMBER WHEEL ILLUMINATION LAMP (WHEN FITTED)



- NOTES
- RELAYS LB & LC ARE DIFFERENTIALLY CONNECTED
  - ALL WIRING TO BE 25 SWG.
  - WHEN POSITIVE BATTERY IS CONNECTED DELETE STRAP BETWEEN SCA26 & 27 SHOWN -

TESTER FOR RURAL FINAL  
SELECTOR: \_\_\_\_\_  
TYPE: \_\_\_\_\_  
(GEO-THERMAL AREAS)  
AMENDMENT PARTICULARS: \_\_\_\_\_  
ISSUE DATE: \_\_\_\_\_  
REF: 60111990  
SIZE: 15 SOV  
DRAWN: \_\_\_\_\_  
CHECKED: \_\_\_\_\_  
WIRING: \_\_\_\_\_  
CIRCUIT: \_\_\_\_\_  
GBW 1970