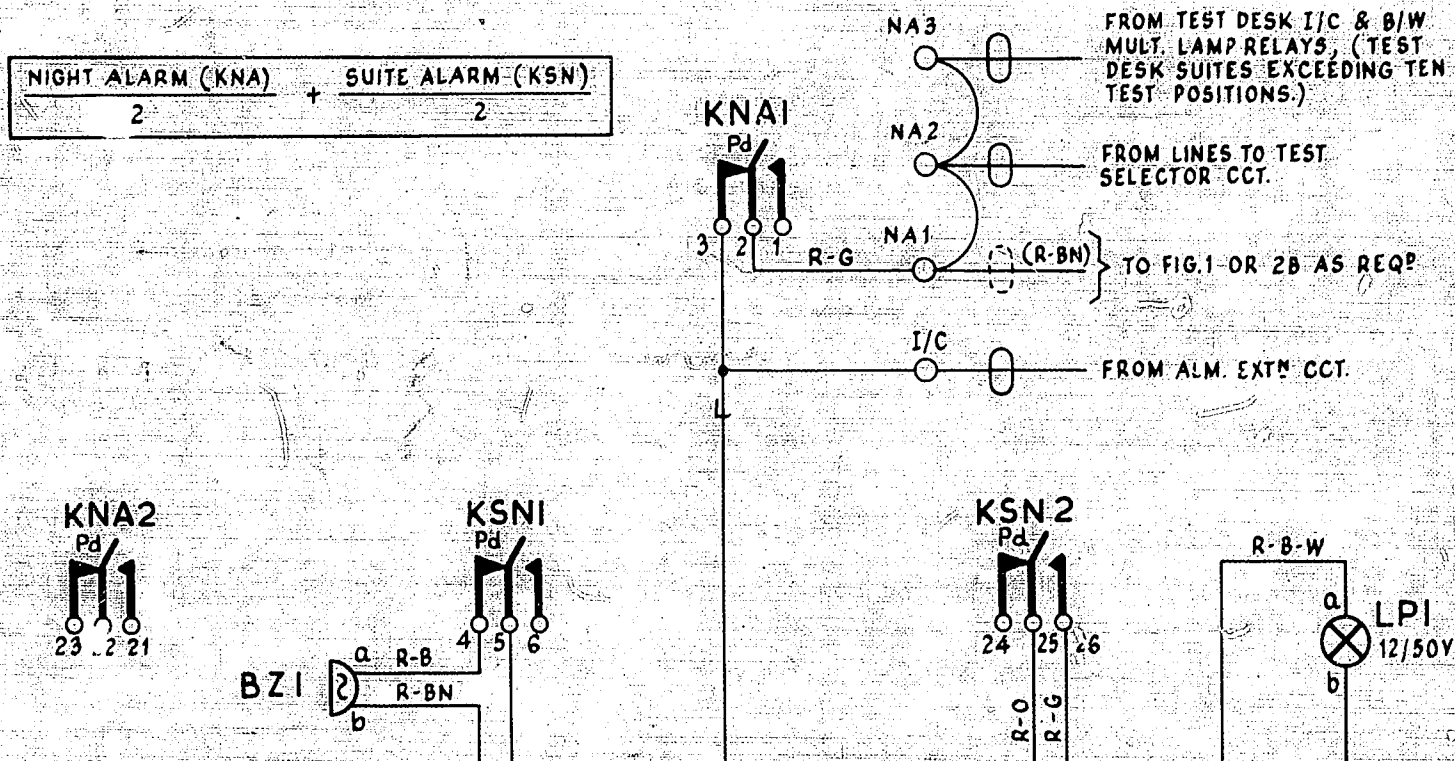
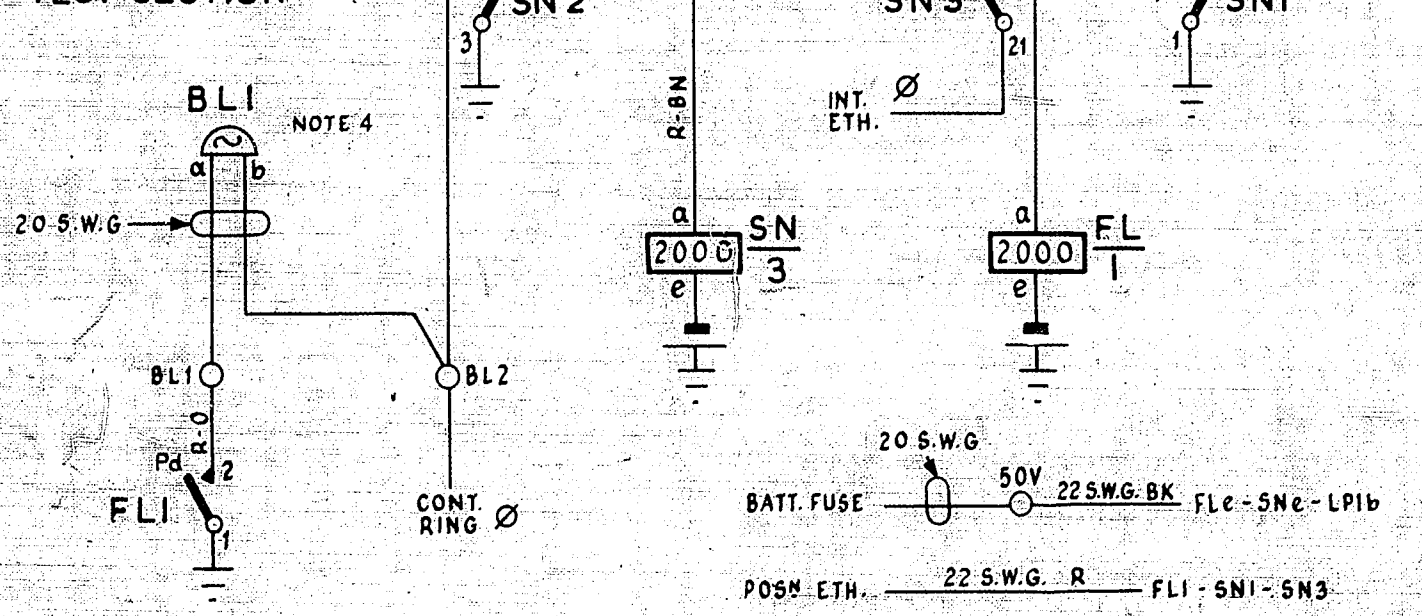


**FIG. 3A NIGHT ALARM (1 PER TEST DESK)
1ST MISC. SECTION**

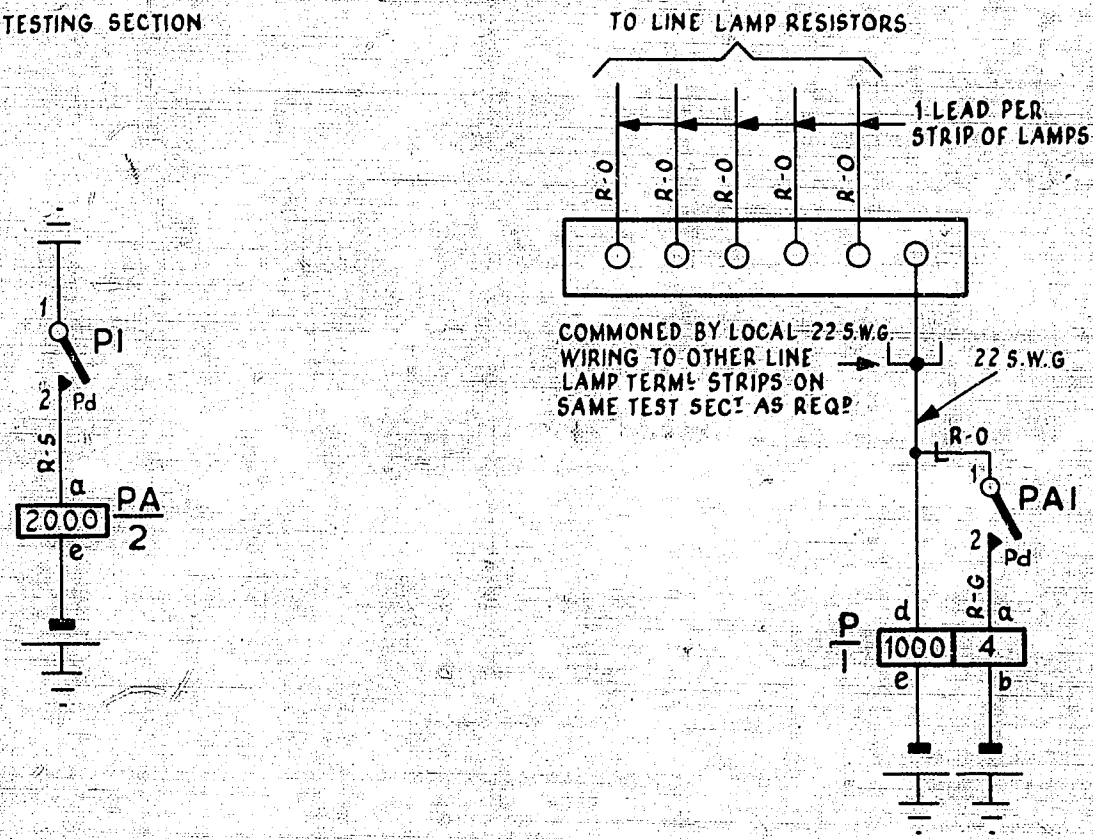


**FIG. 3B NIGHT ALARM RELAYS
1ST TEST SECTION**

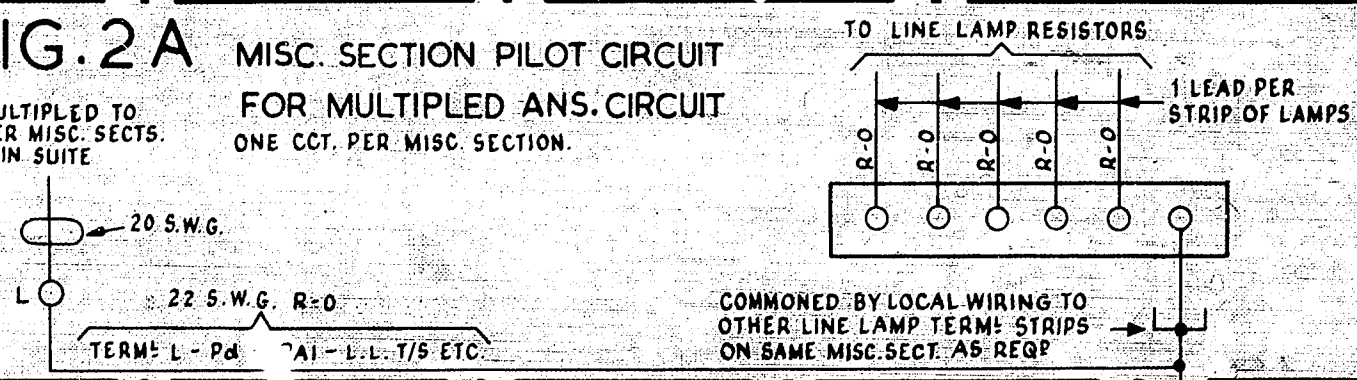


NOTES:-
 1. FUSING:- FIG. 1 1.5A PER CCT.
 FIG. 2B 3.0A PER CCT.
 FIG. 3B 1.5A PER CCT.
 2. ALL WIRING TO BE 25 S.W.G. UNLESS OTHERWISE SPECIFIED.
 3. ∅ FOR WIRING SEE GBW 11480 OR EQUIV.
 4. THE BELL BL1 WILL BE MOUNTED IN A CONVENIENT POSITION BY THE CUSTOMER.

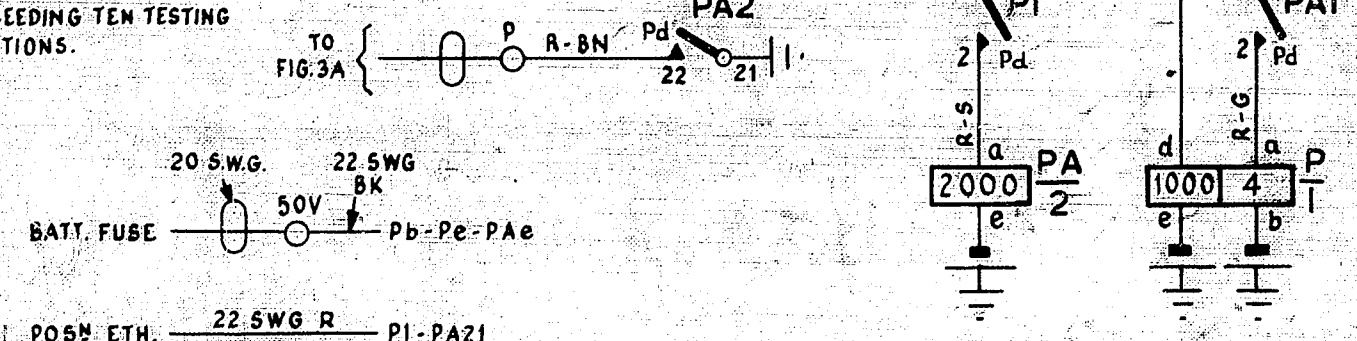
**FIG. 1 TESTING SECTION PILOT CIRCUIT
FOR NON-MULTIPLIED ANS. CIRCUITS.
1 CCT. PER TESTING SECTION**



**FIG. 2A MISC. SECTION PILOT CIRCUIT
FOR MULTIPLIED ANS. CIRCUIT
ONE CCT. PER MISC. SECTION**



**FIG. 2B PILOT CIRCUIT RELAYS.
ONE CCT. PER TEST DESK SUITE NOT EXCEEDING TEN TESTING SECTIONS.**



TEST DESK PILOT & NIGHT ALARM CIRCUITS (GEO-THERMAL AREAS)					
(58280)	1	10-2-67	R/B	REF: GBW 11441	SIZE S 50V 6
AMENDMENT PARTICULARS			ISSUE DATE APPD	REF: GBW 11441	SIZE S 50V 6
N.Z.P.O.	DRAWN	CHECKED	WIRING	CIRCUIT	
GBW 19150					