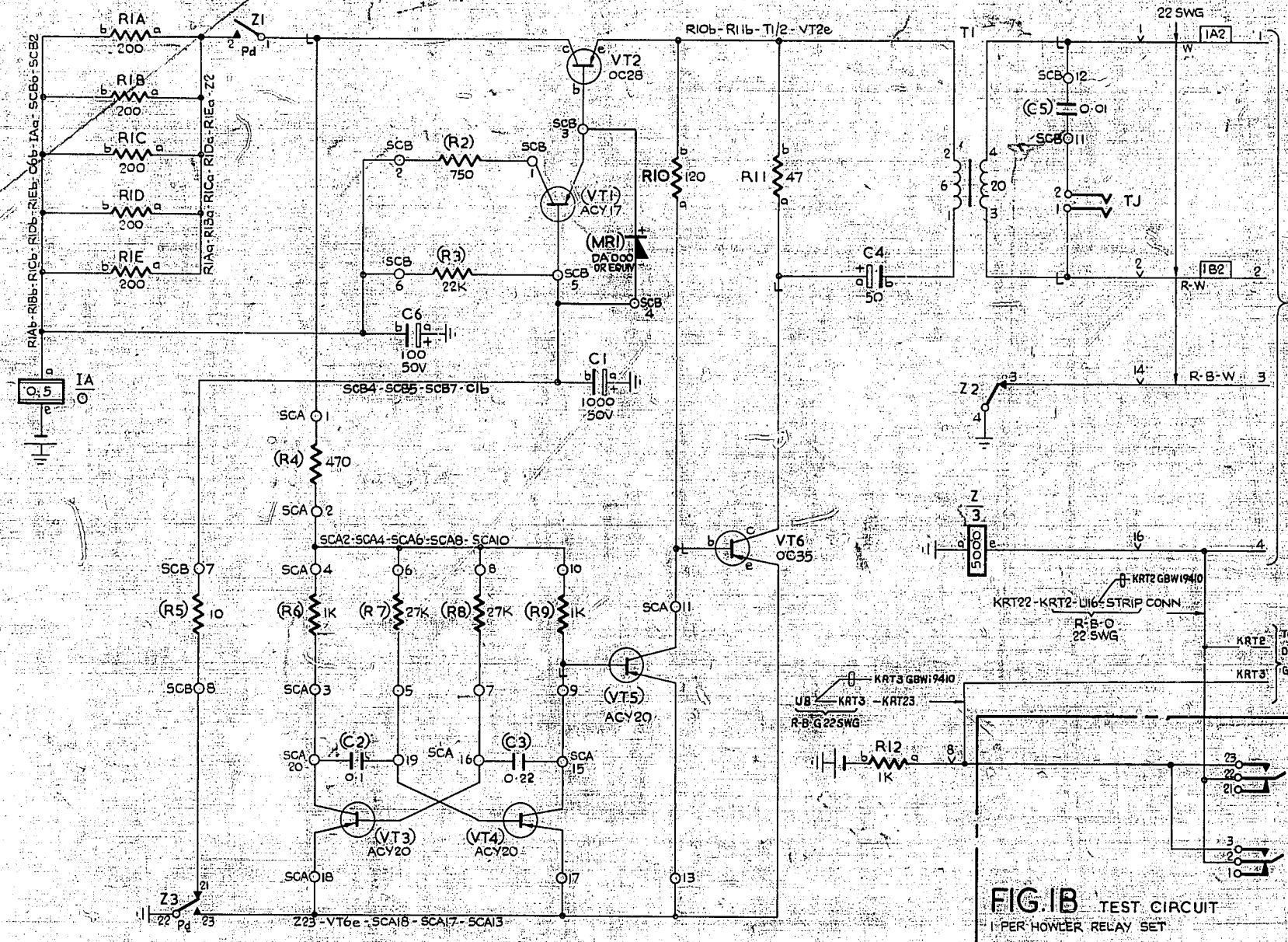


FIG. 1A HOWLER RELAY SET
1 OR 2 PER EXCHANGE
NOTE 2



BATT. BK. 22 SWG FUSE: 2B2 UII
EARTH R. 22 SWG ETH BAR: 2A2 UII
BATT. W. UII - RI2b - 1Ae
EARTH R. UII - C6a - 222 - Za - Z4 - C1a

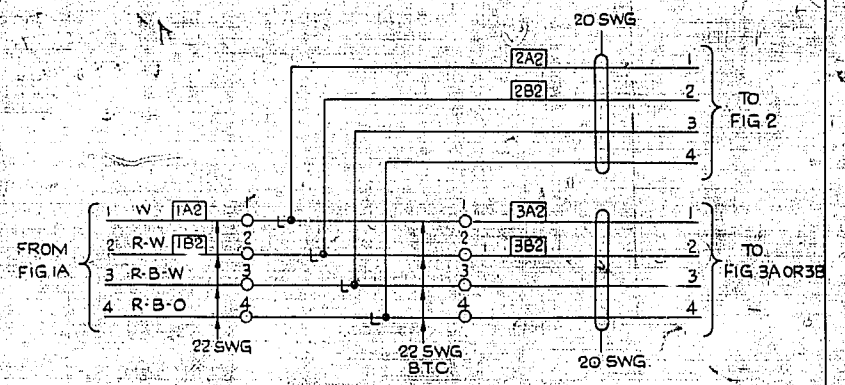


FIG. 1C A.E.R. STRIP CONN.
PER EXCHANGE WITH ONE
HOWLER RELAY SET

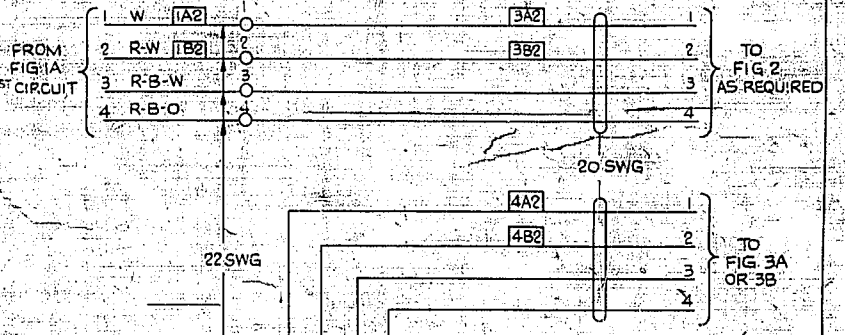


FIG. 1D A.E.R. STRIP CONN.
PER EXCHANGE WITH TWO
HOWLER RELAY SETS

FIG. 1B TEST CIRCUIT
1 PER HOWLER RELAY SET
ROUTINE TEST (KRT)

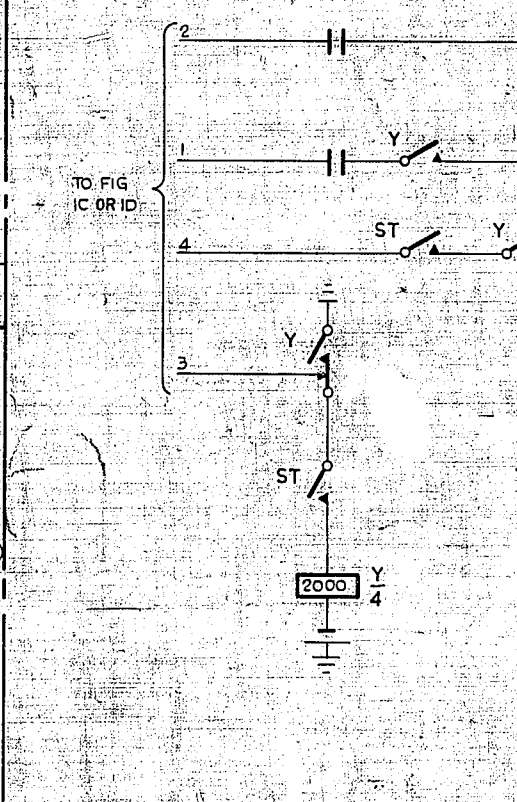
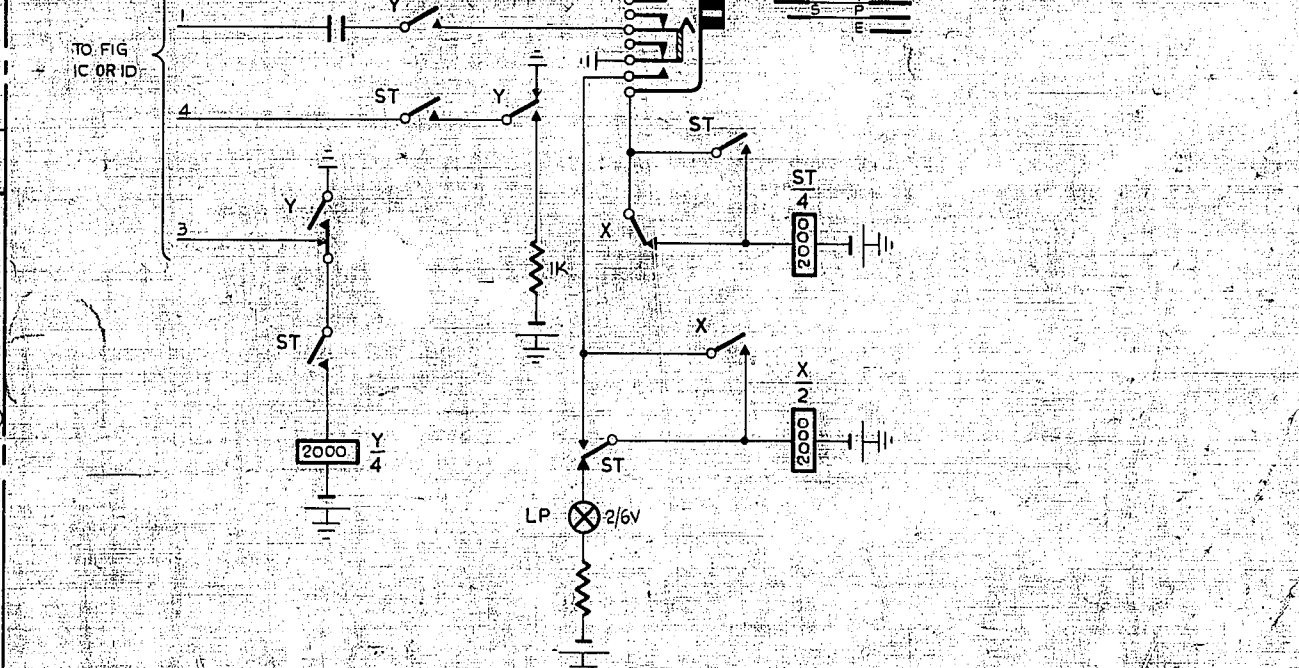


FIG. 2 SELECTOR RACK EQUIPMENT
1 PER 1ST GROUP DSR AND
FINAL SELECTOR RACK
EXPLANATORY ONLY



- NOTES**
- 1 FUSING: FIG. 1A 1-5A PER RELAY SET. FIGS. 3A AND 3B FUSED WITH ASSOCIATED TEST CORD OR TEST JACK CIRCUIT.
 - 2 IN EXCHANGES WITH OVER 4000 SUBSCRIBERS ULTIMATE, 2 HOWLER RELAY SETS SHOULD BE PROVIDED WHERE SPEC'D.
 - 3 ALL WIRING NOT OTHERWISE SPECIFIED TO BE 25 SWG.
 - 4 FOR WIRING SEE RELEVANT RACK COMMON SERVICES DIAGRAM.
 - 5 WHEN RURAL LINE TEST FACILITIES ARE SPECIFIED ADD CONNECTIONS SHOWN --- AND DELETE CONNECTIONS SHOWN - - -

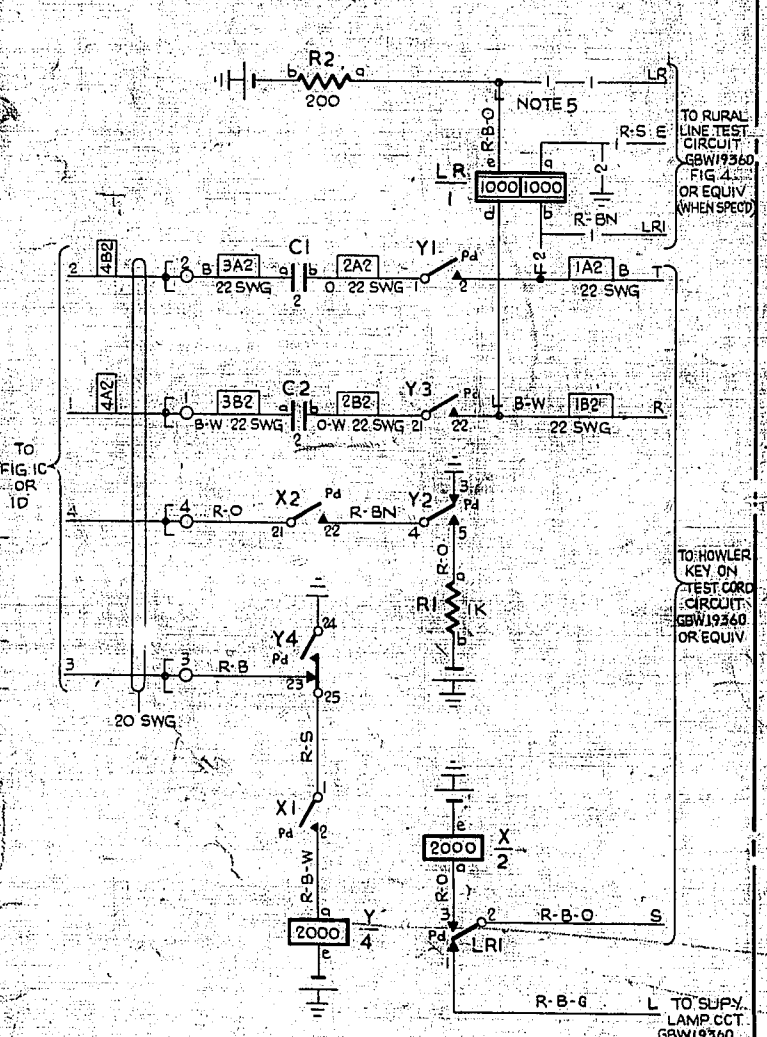


FIG. 3A TEST DESK EQUIPMENT
1 PER TEST CORD CIRCUIT

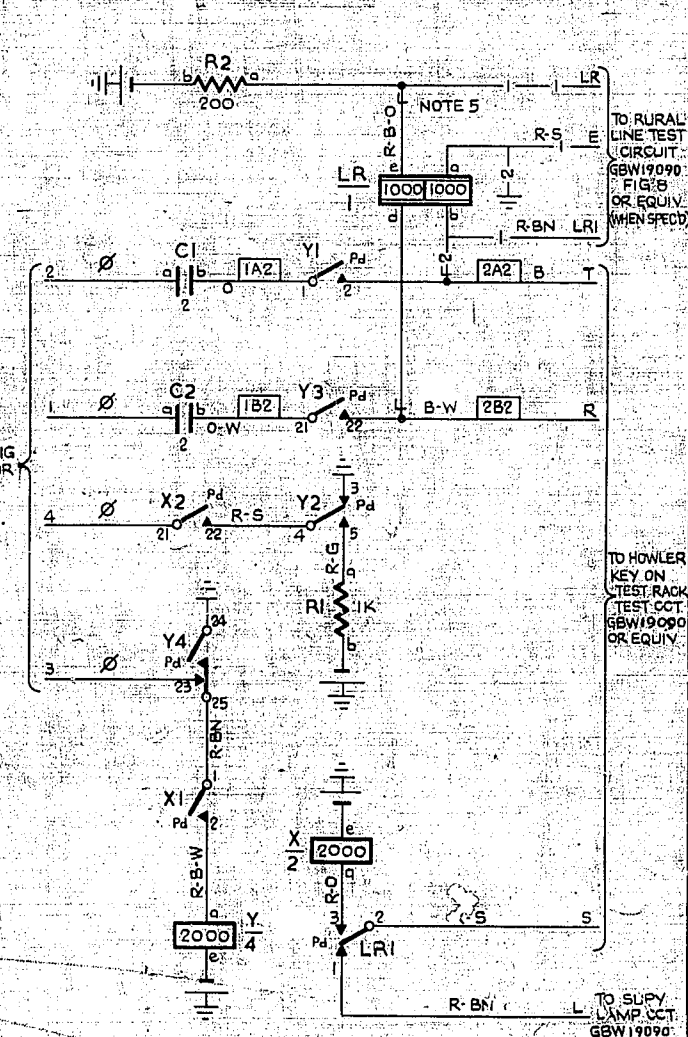


FIG. 3B TEST RACK EQUIPMENT
1 PER TEST JACK CIRCUIT

BATT. BK. BATT. TAG SERVING TEST CORD C.T.
EARTH R. DESK EARTH: Xe - Ye - Rib - R2b
y24 - y3 - (LRa)

BATT. BK. FUSE: Xe - Ye - Rib - R2b
EARTH R. ETH. BAR: y24 - y3 - (LRa)

GRADUATED HOWLER (GEO-THERMAL AREAS)			
AMENMENT PARTICULARS (8220)		ISS. DATE	APPR.
REF: GBW10822		SIZE M	50V E
N.Z.P.O.	DRAWN	CHECKED	WIRING CIRCUIT
			GBW 1910