

FIG. 1A FUSE ALARM

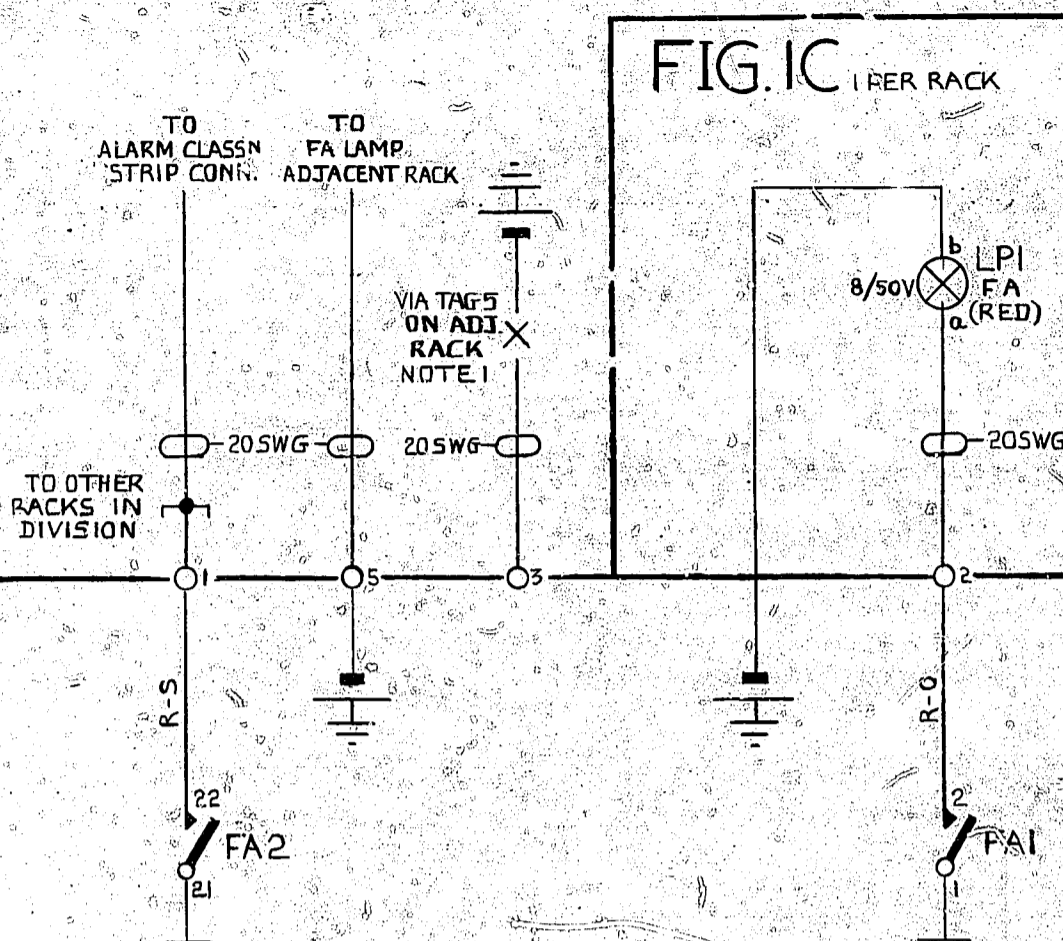


FIG. 1C 1 PER RACK

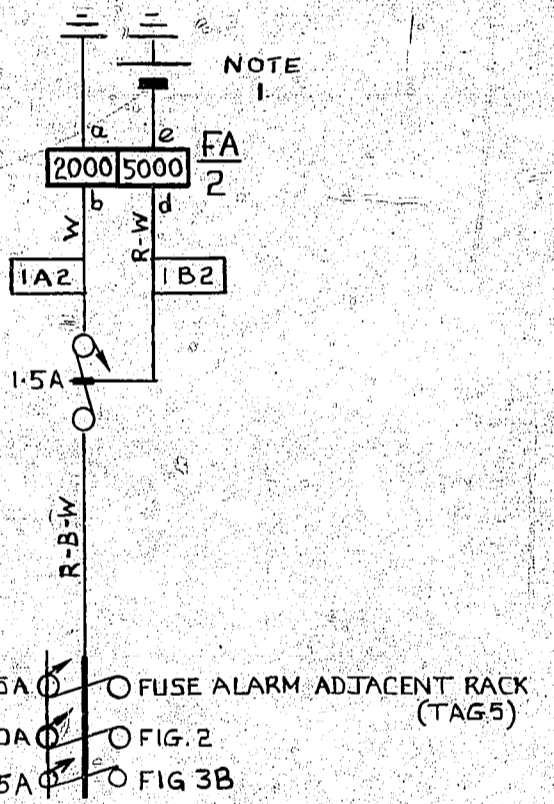
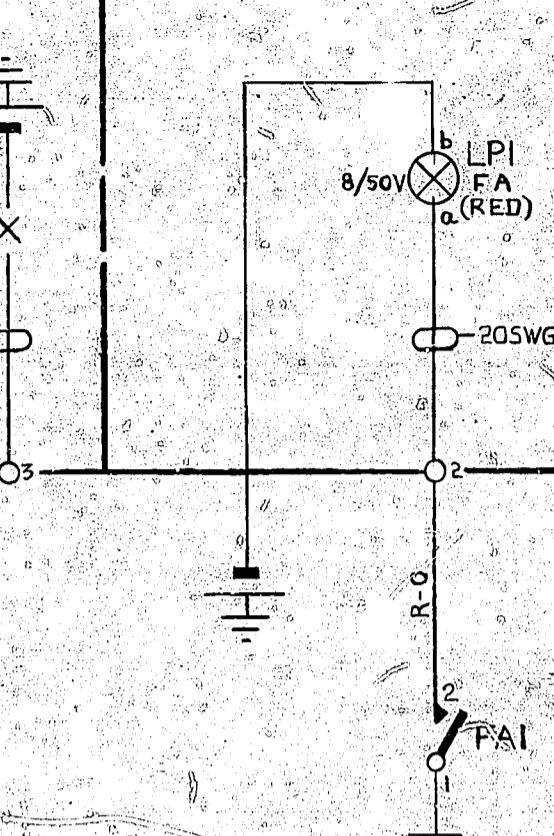


FIG. 1B 1 PER RACK

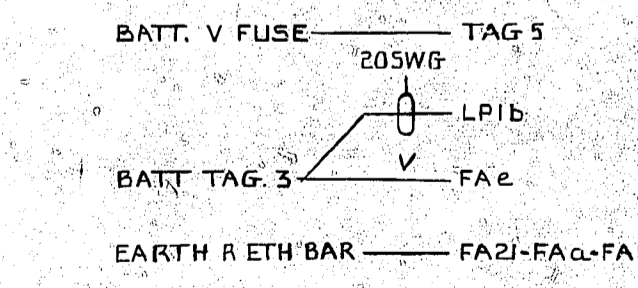


FIG. 2 BATTERY JACKS

1 PER RACK

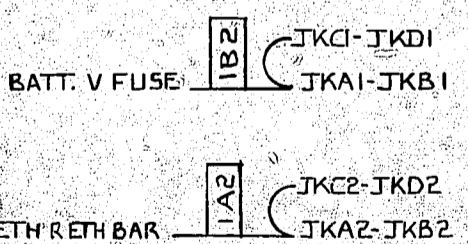
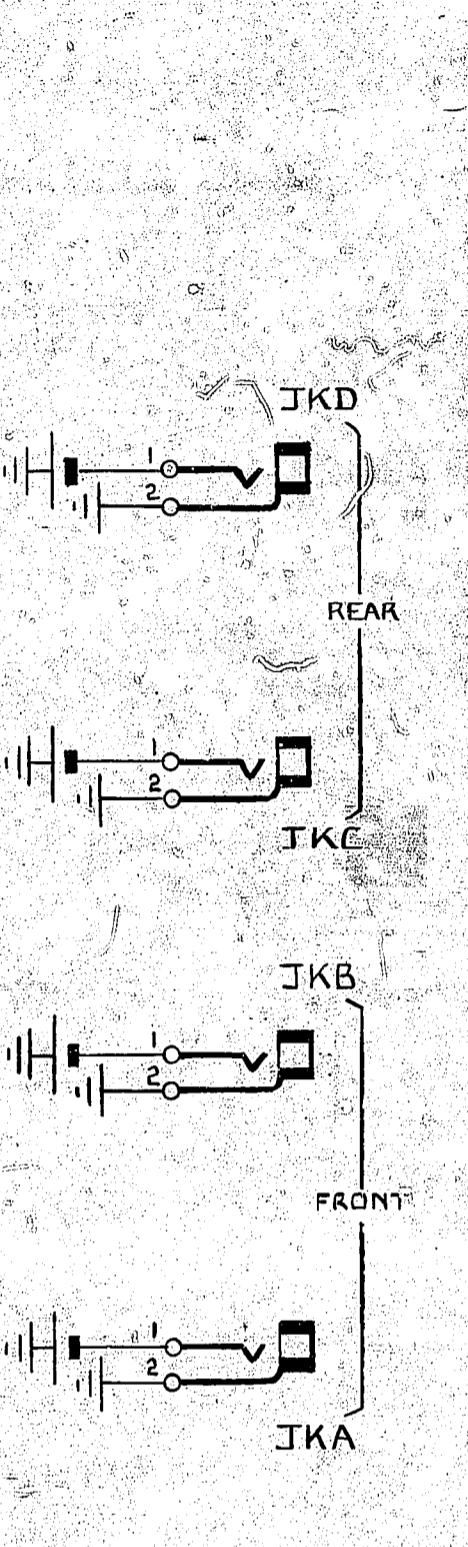


FIG. 3A FAULT ALARM RACK LAMP

1 PER RACK

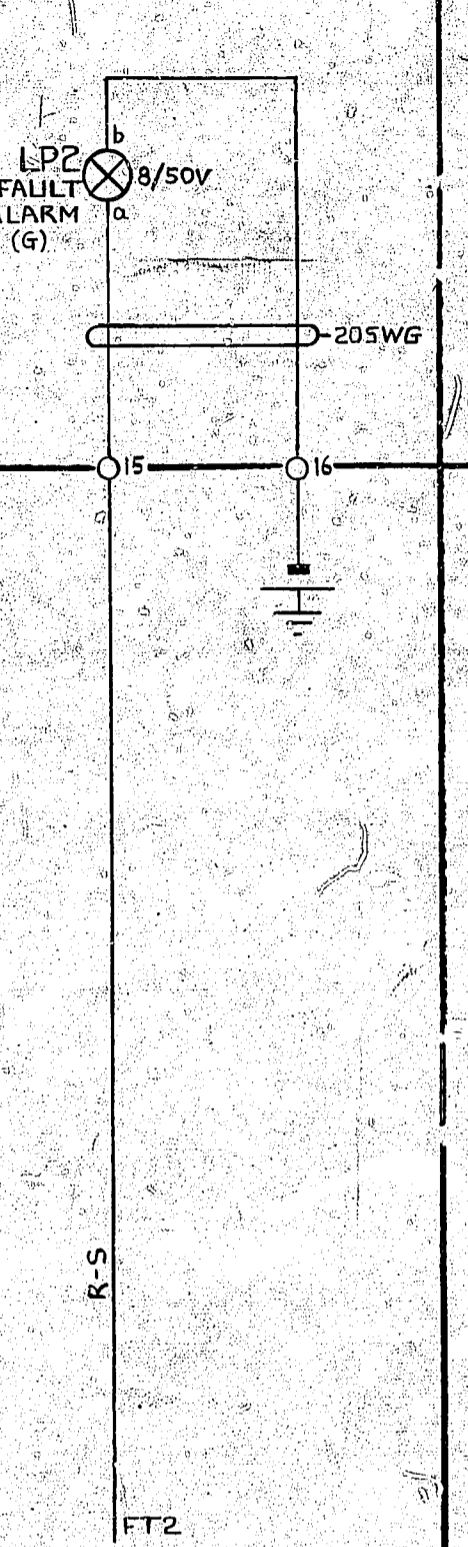


FIG. 3B 1 PER RECORDER

FIG. 4A PROMPT ALARM

1 PER RECORDER

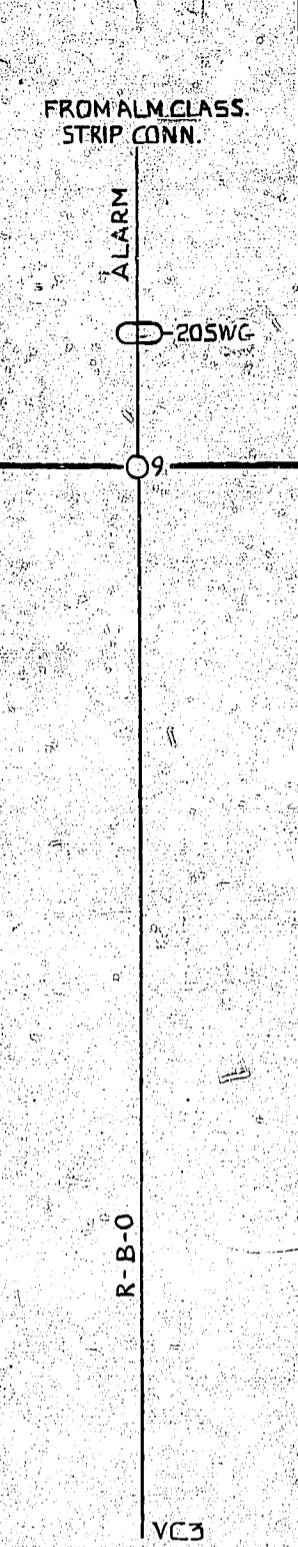


FIG. 4B 1 PER RECORDER

FIG. 5A 6 SEC. EARTH

1 PER RECORDER

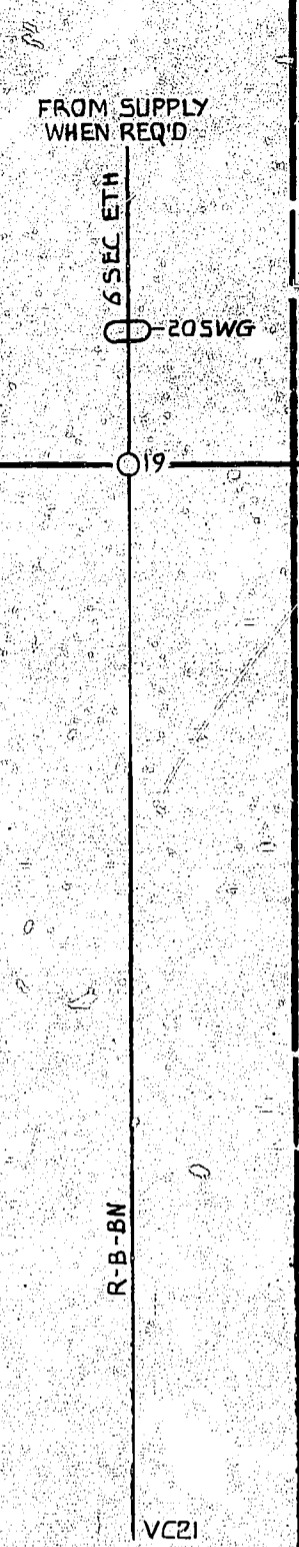


FIG. 5B 1 PER RECORDER

FIG. 6A 30 SEC. Z PULSE

1 PER RECORDER

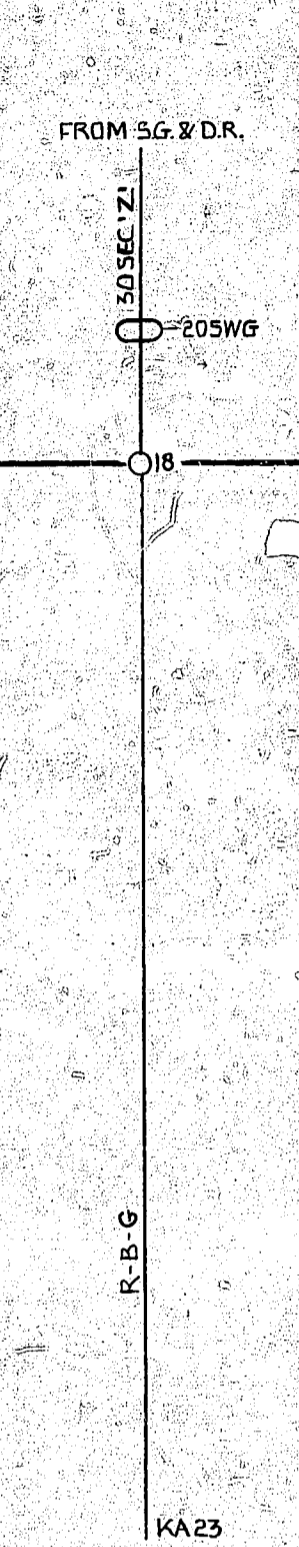


FIG. 6B 1 PER RECORDER

ALLOCATION OF TAGS ON RACK MISC. STRIP CONN.			
TAG	SERVICE	TAG	SERVICE
1	ALARM.	11	
2	LAMP	12	
3	BATT I/C	13	FUSE ALARM
4		14	
5	BATT O/G	15	LAMP } FAULT ALARM
6		16	
7		17	
8		18	30 SEC 'Z' PULSE
9	PROMPT ALARM	19	6 SEC. EARTH
10		20	

NOTES:

1. THE FA RELAY AND LAMP TO BE FUSED ON AN ADJACENT RACK e.g. 1ST, 3RD, ETC. RACKS SHALL SERVE THE 2ND, 4TH, ETC. RACKS AND VICE VERSA. WHEN THERE IS AN ODD NUMBER OF RACKS IN THE SUITE THE FUSE ON THE LAST EVEN RACK SHALL SERVE THE LAST TWO ADJACENT RACKS. WHEN THE ABOVE ARRANGEMENT CANNOT BE FOLLOWED THE FA RELAY AND LAMP SHALL BE FUSED ON THE NEAREST RACK IN THE SAME SUB SECTION.
2. UNLESS OTHERWISE SPECIFIED, TAGS ARE ON RACK MISC. STRIP CONN.
3. ALL WIRING TO BE 22SWG UNLESS OTHERWISE SPECIFIED.

A2 DRN Mgl WRG
 CKD CCT
 A3 GPO CERTIFICATION

AUTOMATIC TELEX SYSTEM
 TRAFFIC RECORDER
 RACK COMMON SERVICES
 ACCESS CONTROL EQUIPMENT,
 2000 TYPE

REFERENCES 50V E
 SIZE M