

0  
5  
10  
15  
20  
25  
30  
Centimeters

E.C.B  
EXPLANATORY ONLY  
GBW 17260 FIG 12 OR EQUIV.

FIG 2A TEST DESK PER CIRCUIT

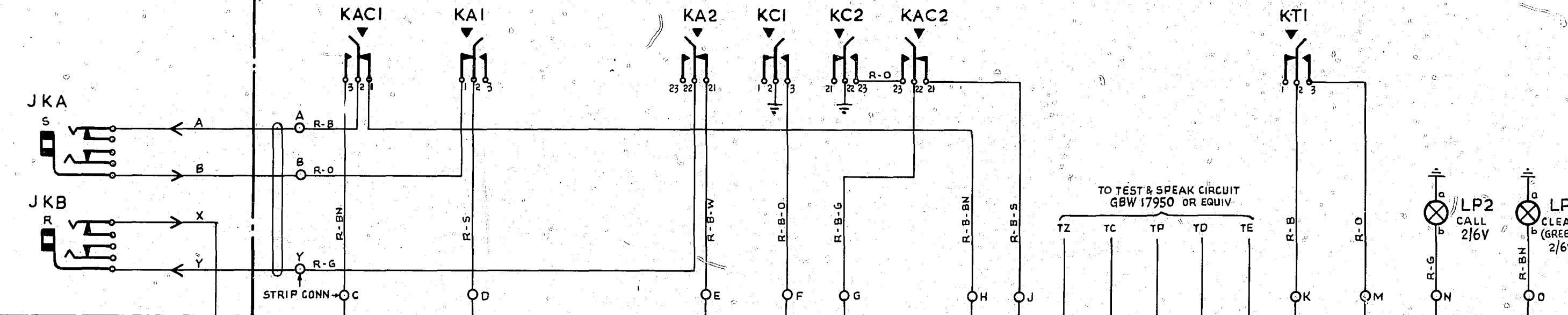
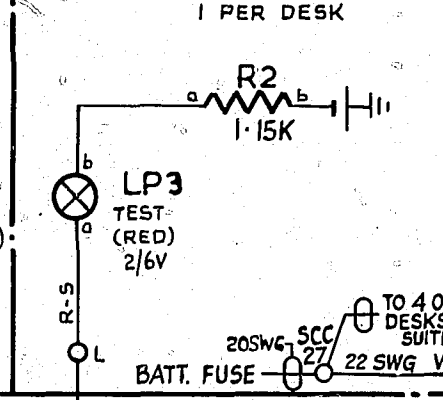


FIG 2B TEST DESK  
1 PER DESK



AUXILIARY LINE (KA)	CALL-IN (KC)
2	2
TEST (KT)	ACKNOWLEDGE (KAC)
2	2

FIG 1 RELAY SET

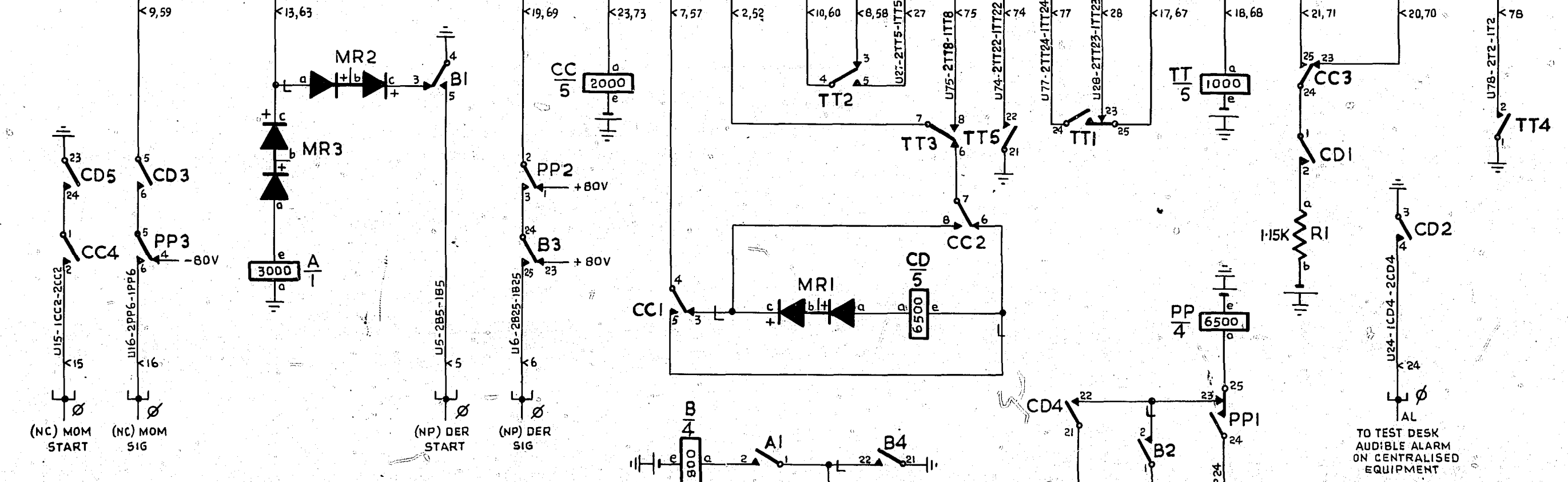
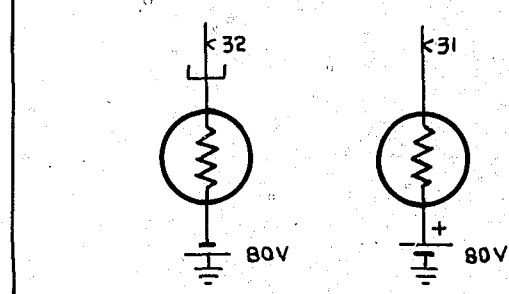


FIG 3 RESISTORS BULB



- 50V BATT W U12-1R1b-2R1b-1CCe-2CCe-2Be-2TTe-2PPe-1Be-1TTe-1PPe
- EARTH R U11-1CD23-1CD3-1Aa-2CD23-2CD3-2Aa-2B21-2B4-2TT21-2TT1-2PP22-1B21-1B4-1TT21-1TT1-1PP22
- +80V BATT O U31-2B23-2PP1-1B23-1PP1
- 80V BATT BK U32-2PP4-1PP4
- 50V BATT W 22 SWG FUSE - U12
- EARTH R 22 SWG ETH BAR - U11

- NOTES
- FUSING  
FIG 1 - 50V 1.5A PER RELAY SET (2 CIRCUITS)  
FIG 2B-50V 1.5A PER SUITE OF 5 DESKS.  
FIG 3 - 80V 1.0A & RESISTOR BULB PER 5 RELAY SETS (10 CIRCUITS)  
+ 80V 1.0A & RESISTOR BULB PER RELAY SET (2 CIRCUITS)
  - WIRING NOT OTHERWISE SPECIFIED TO BE 25SWG
  - FOR WIRING SEE GBW 17350 OR EQUIV.

AUTOMATIC TELEX SYSTEM TEST & PLUGGING UP CIRCUIT WITH CALL-IN FACILITY 2000 TYPE			
AMENDMENT PARTICULARS	ISSUE DATE	APP'D	SIZE M 50V E
	(8668) 1	8.4.68	
DRAWN			GBW 17860
CHECKED			
WIRING			
CIRCUIT			
N.Z.P.O.			