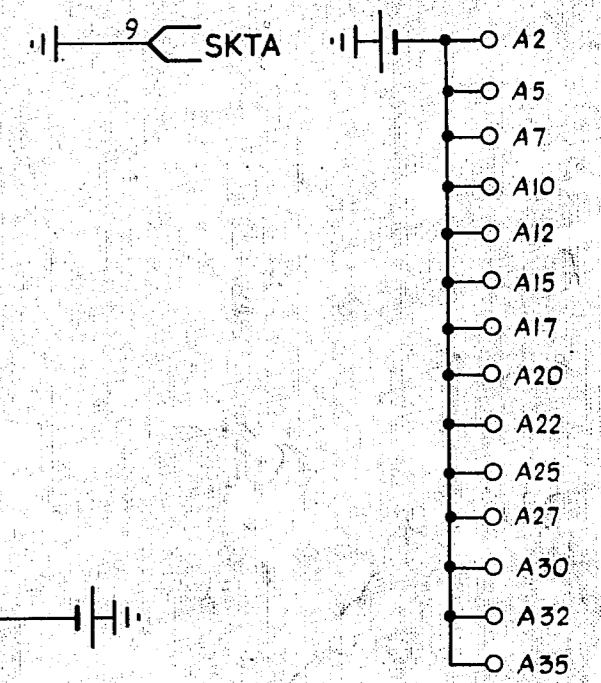
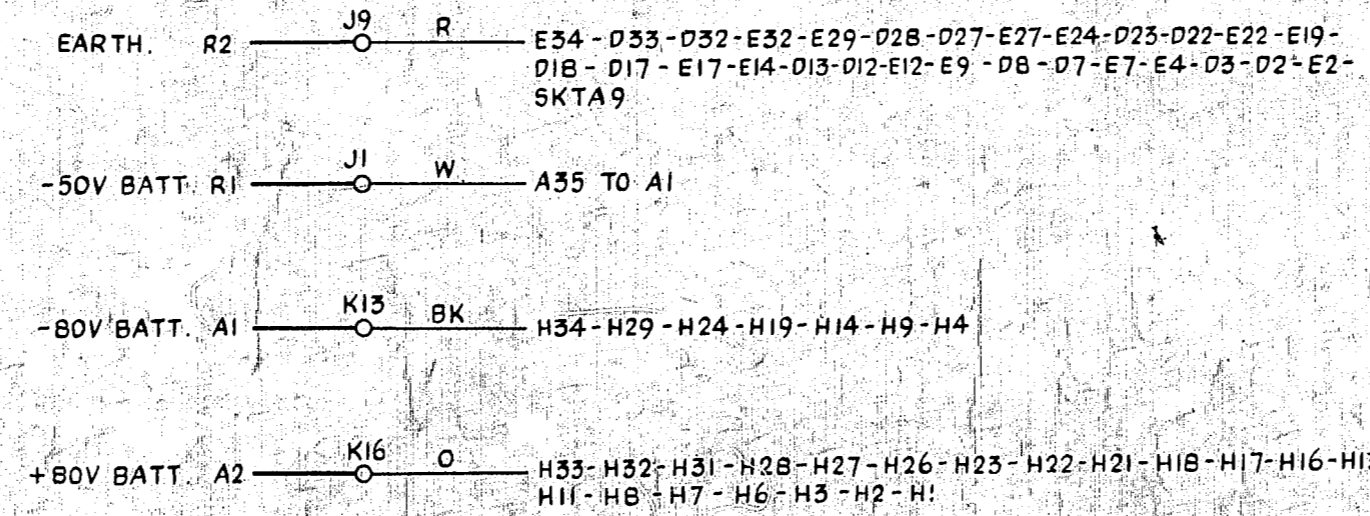
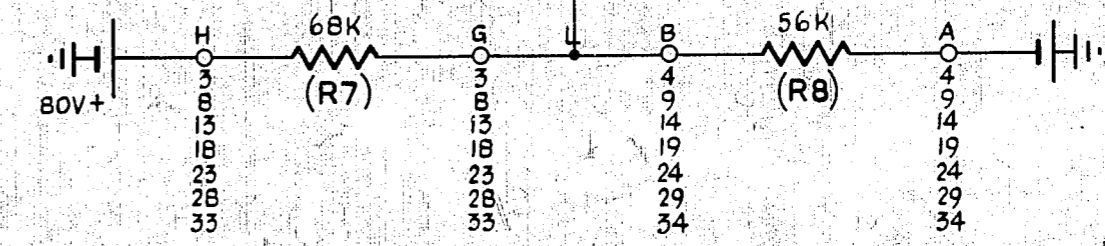
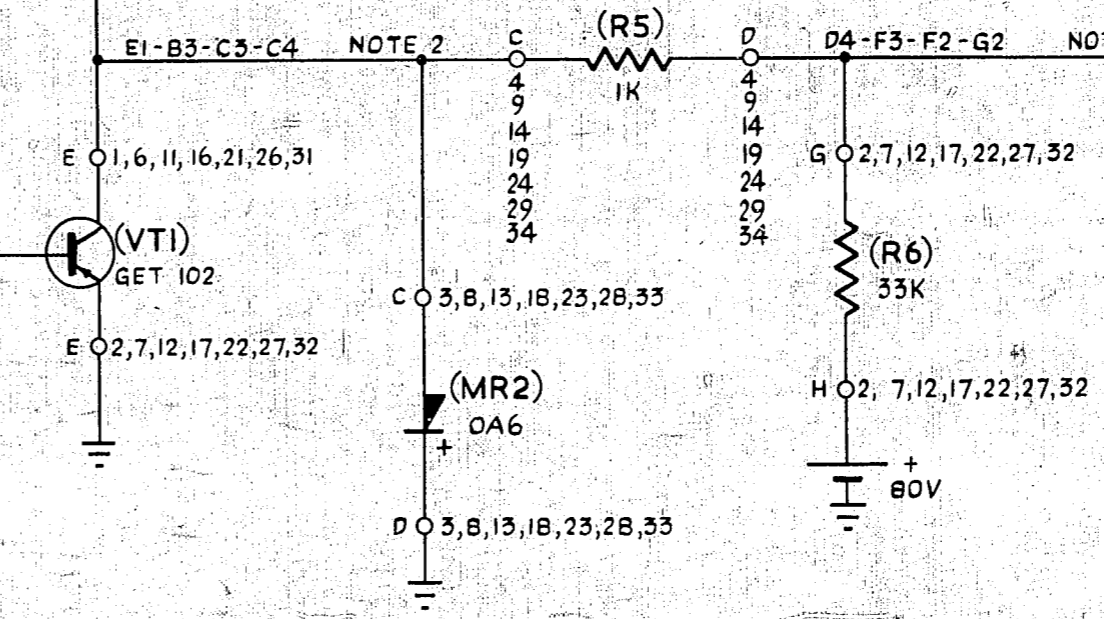
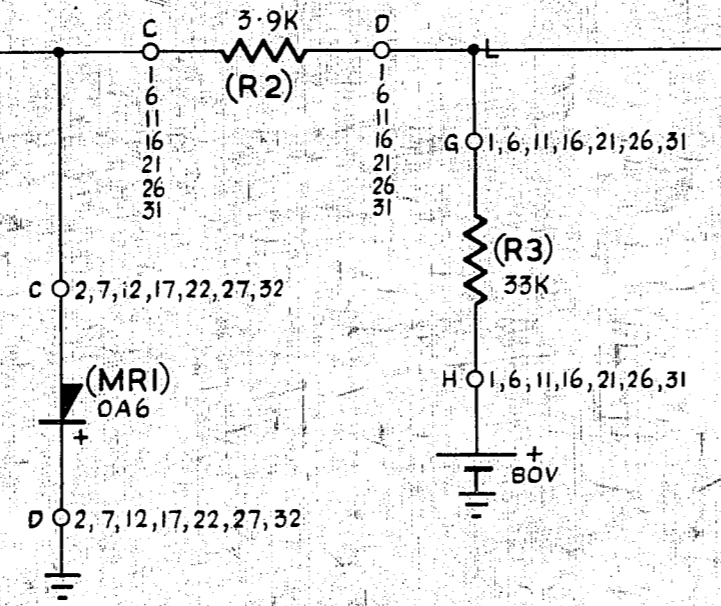
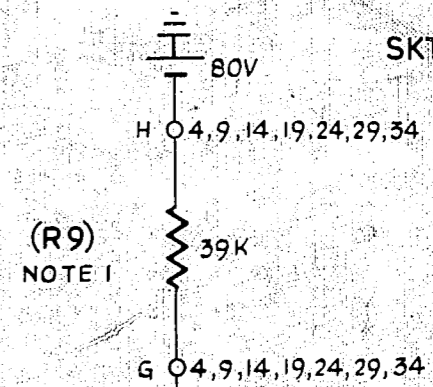
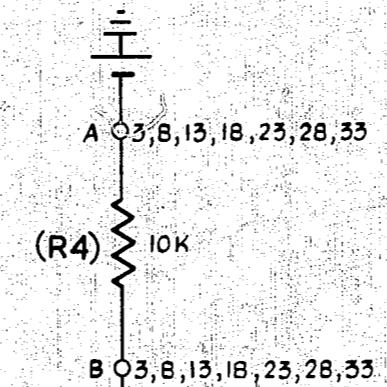
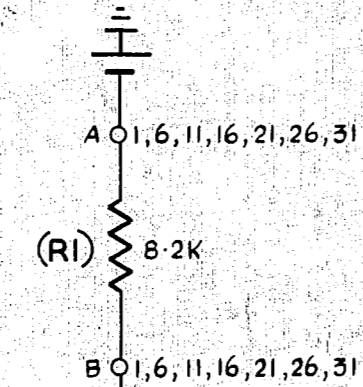


PART OF
GBW17480 OR EQUIV.
EXPLANATORY ONLY

FROM
PHASING PULSE CIRCUITS
GBW 17520, GBW 17570
OR EQUIV.
OR FROM
7-WIRE OUTPUT CIRCUIT
GBW 17560 OR EQUIV.

PART OF
GBW 17480 OR EQUIV.
EXPLANATORY ONLY



NOTES:-

- FOR 7-WIRE OUTPUT CIRCUITS, RESISTOR R9 IS NOT FITTED.
- ROUTING SHOWN IS APPLICABLE TO CIRCUIT 1. CIRCUITS 2-7 TO BE ROUTED IN SAME ORDER OF TAGS.

AUTOMATIC TELEX SYSTEM SIGNAL GENERATOR PULSE OUTPUT CIRCUIT			
AMENDMENT PARTICULARS		ISSUE DATE	APPD.
		19.4.63	
GBW 17540			SIZE M 50V E
NZPO	DRAWN	CHECKED	WITNESSED

