

EXPLANATORY DIAGRAMS OF TESTING CONDITIONS

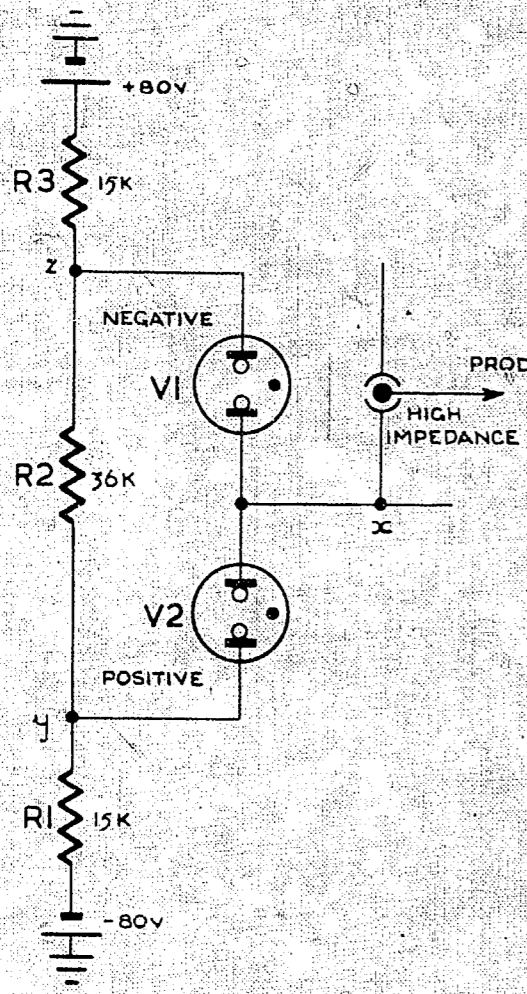


FIG. 2. HIGH IMPEDANCE TEST

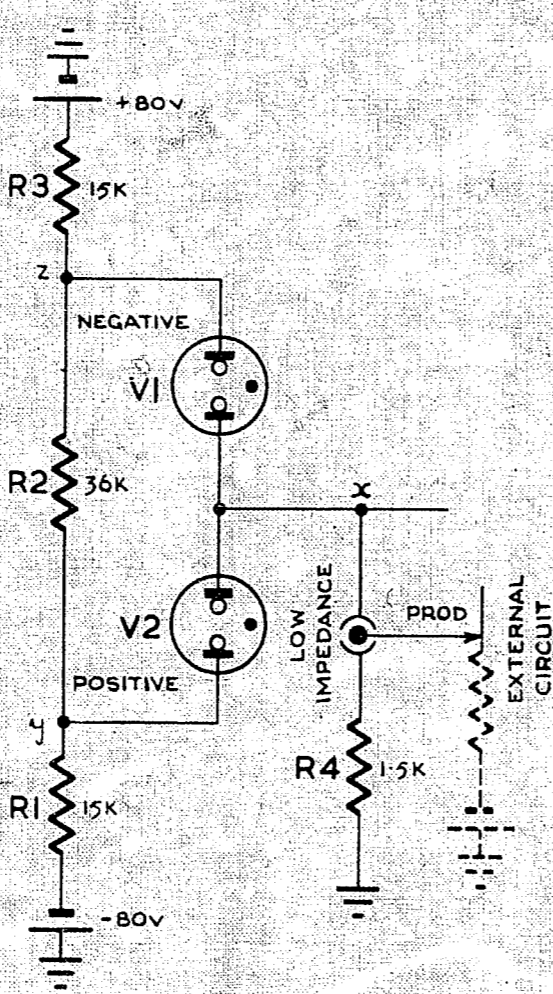


FIG. 3. LOW IMPEDANCE TEST

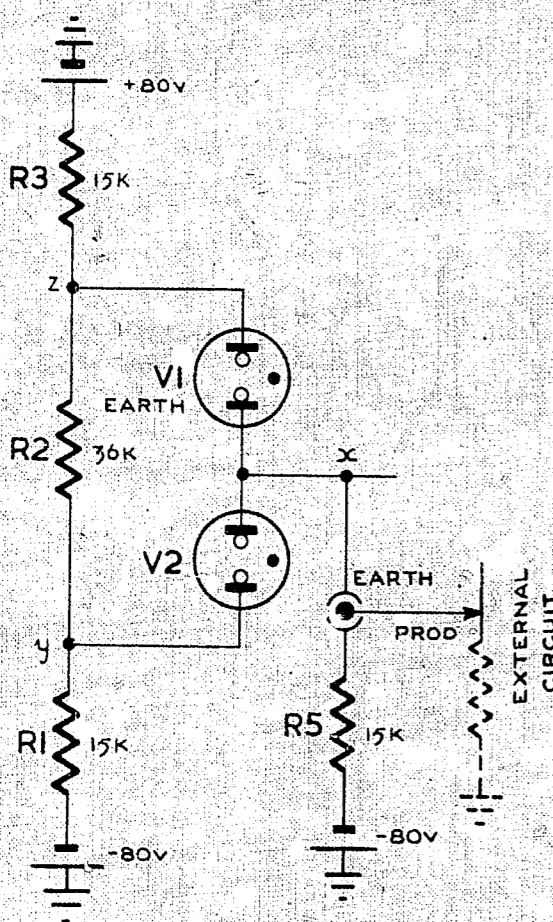


FIG. 4. EARTH TEST

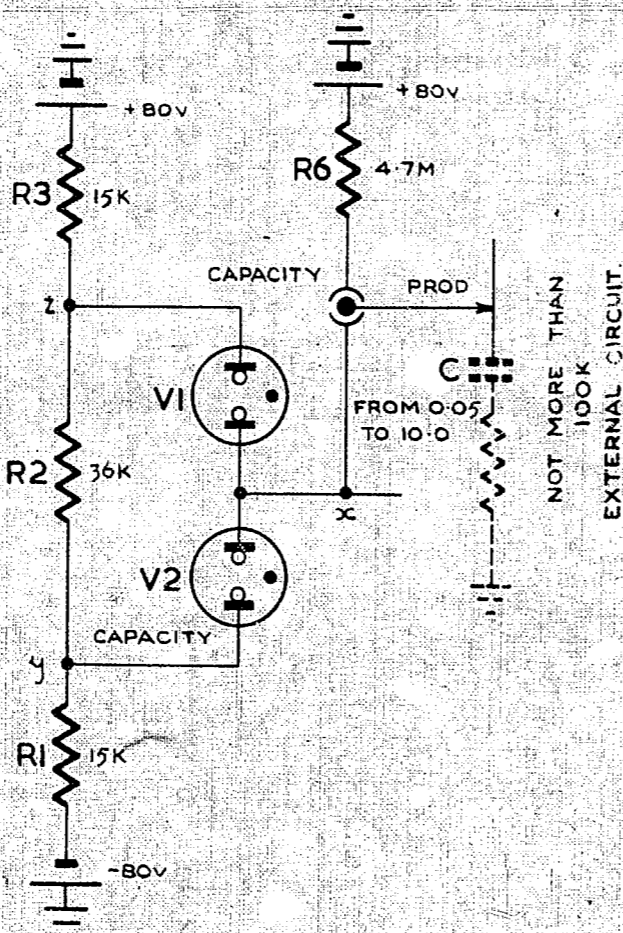


FIG. 5. CAPACITY TEST

FIG. 1A TEST PROBE

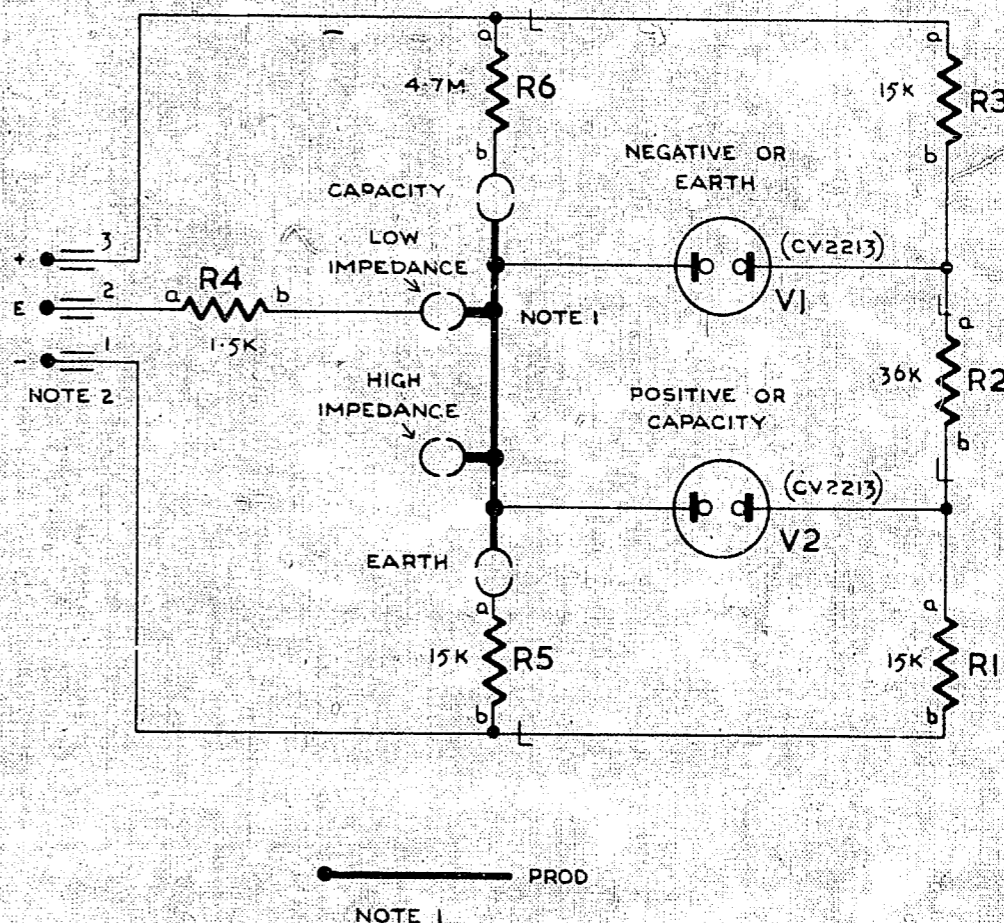
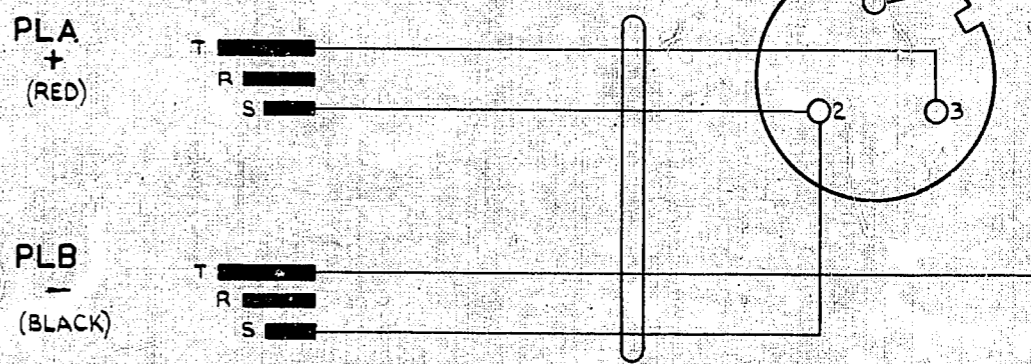


FIG. 1B TEST CORD



NOTES

1. EACH PAIR OF SOCKETS IS ARRANGED ON A COMMON AXIS SO THAT SCREWING THE PROD INTO THE APPROPRIATE PAIR COMMONS THEM.
2. CONNECT TO +80V SUPPLY AND EARTH WITH TEST CORD FIG. 1B.

					AUTOMATIC TELEX SYSTEM		
					CIRCUIT CONTINUITY		
					TEST PROBE		
					AMENDMENT PARTICULARS		
					ISSUE DATE APPR		
					SIZE: 5 80V E		
					GBW 17420		
NZPO		DRAWN	CHECKED	WIRING	CIRCUIT		

0  
5 Centimetres  
10  
15  
20  
25  
30