

FIG. 7A
DISTN OF OCC (ABS)
SIGNAL START
NOTE 4

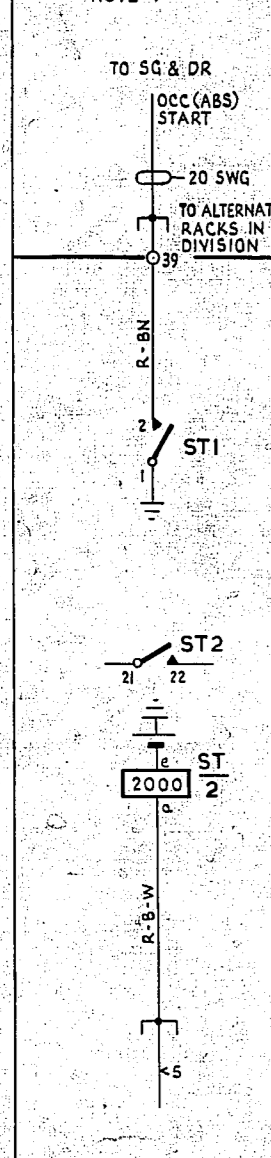


FIG. 7B
1 PER RACK

FIG. 8A
DISTRIBUTION OF WRU SIGNAL

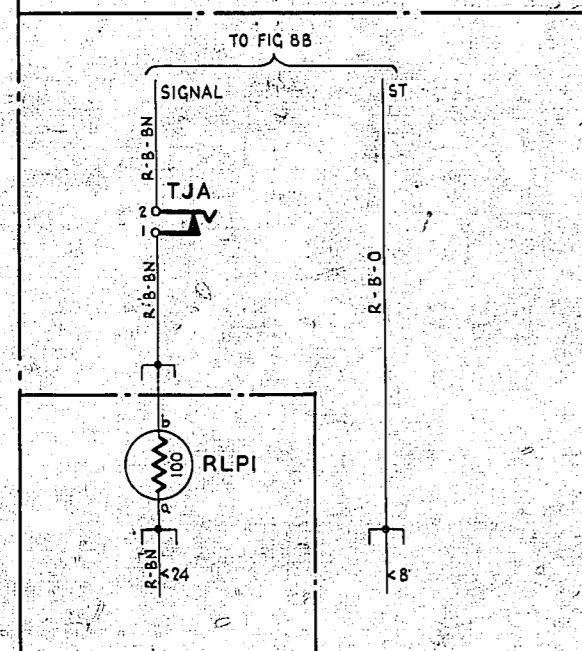
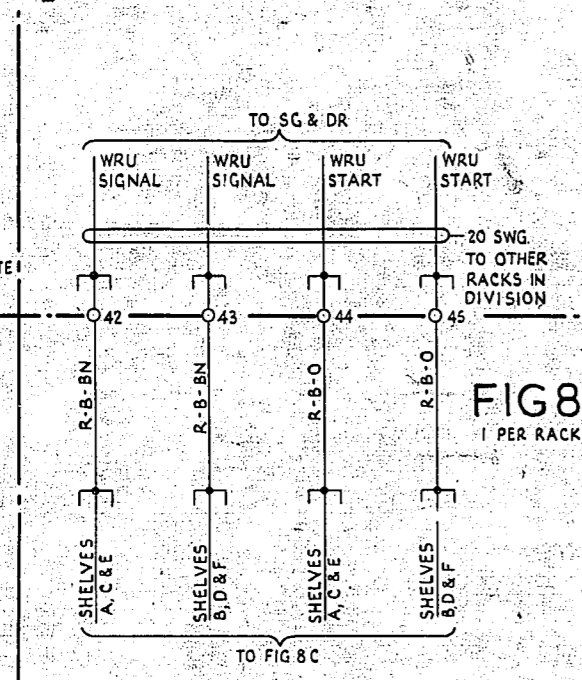


FIG. 8B
1 PER RACK

FIG. 8D
1 PER 2 SUPERVISORY
& METERING RELAY SETS.

FIG. 8C
1 PER SHELF
REF: GBW17230 OR EQUIV.

FIG. 9A
DISTRIBUTION OF 12 SEC S & Z PULSES

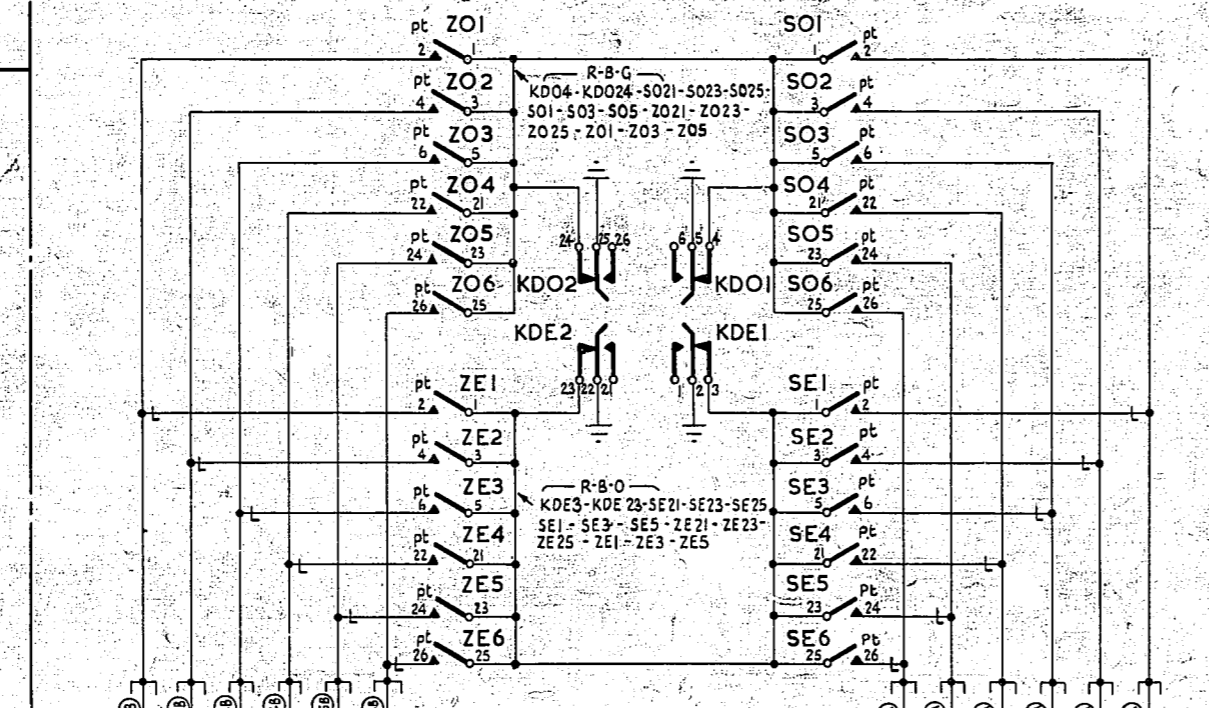
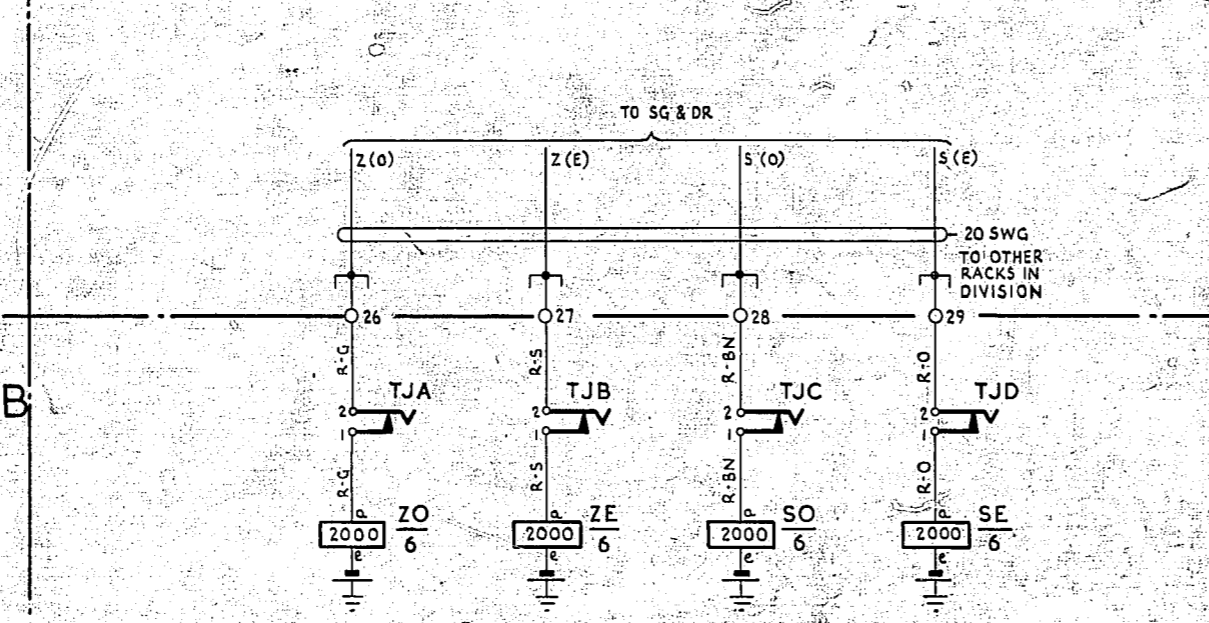


FIG. 9B
1 PER RACK
REF: GBW17130 OR EQUIV.

BATT W FUSE — SOe - ZOe
BATT W FUSE — SEe - Zee
EARTH R ETH BAR — KDe 2 - KDe 22 - KDo5 - KDo 25

DIS. ODD (KDO) + DIS EVEN (KDE)
2 + 2

FIG. 10A
DISTRIBUTION OF METER PULSE

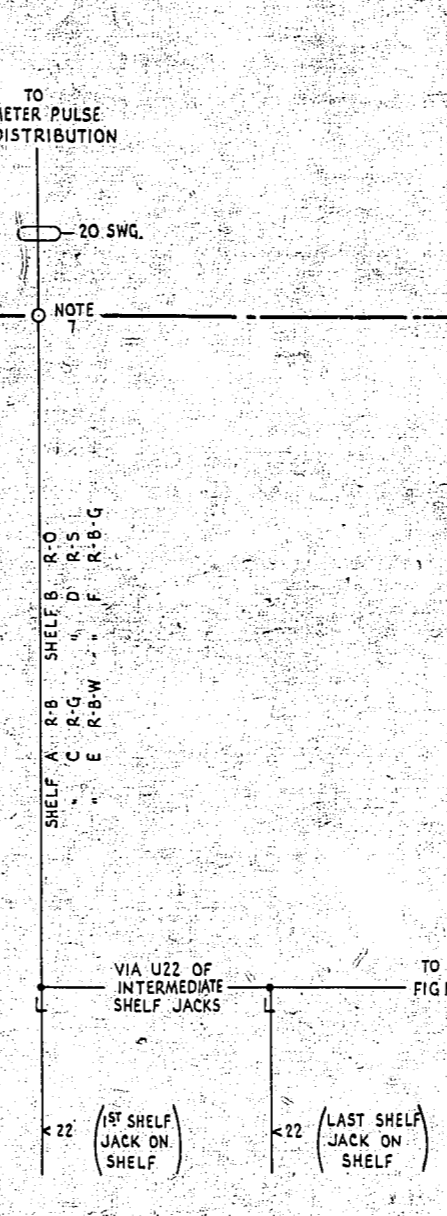


FIG. 10B
1 PER SHELF
REF: GBW 17670

FIG. 11
METER PULSE DISPLAY
1 PER RACK

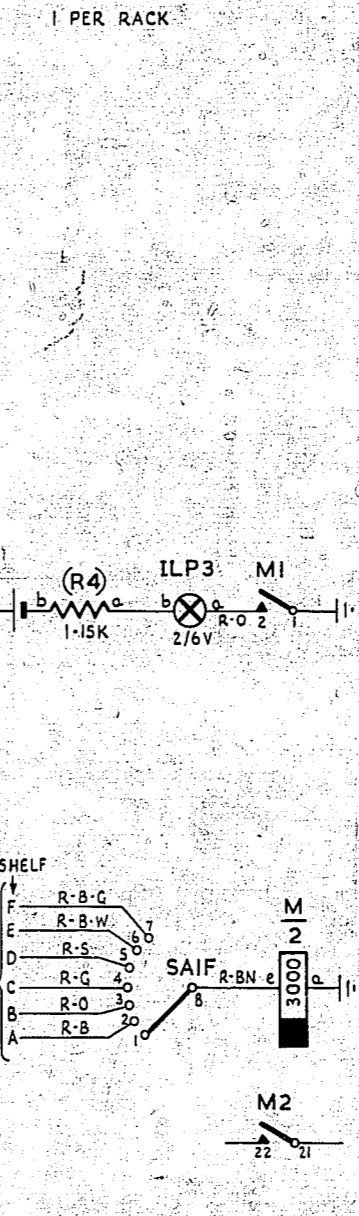


FIG. 10B
1 PER SHELF
REF: GBW 17670

FIG. 12
TRAFFIC
RECORDER
1 PER SUPY & METERING
RELAY SET

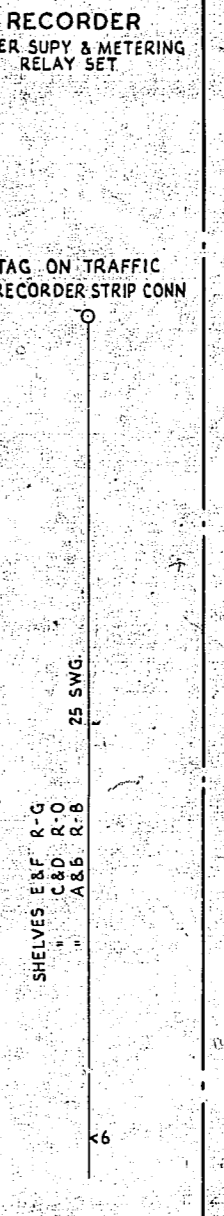


FIG. 10B
1 PER SHELF
REF: GBW 17670

AUTOMATIC TELEX SYSTEM RACK COMMON SERVICES SUPERVISORY & METERING RELAY SET RACK			
FIG. 9B KEY SPRING NUMBERS AMENDED (89886)	2	24-9-64	INT.
		19-4-63	
AMENDMENT PARTICULARS	ISSUE DATE	APPD.	SIZE 50y E.
NZPO	DRAWN	CHECKED	WIRING
			CIRCUIT
GBW 17360			SHT 2-2