

FIG.1A.
FUSE ALARM

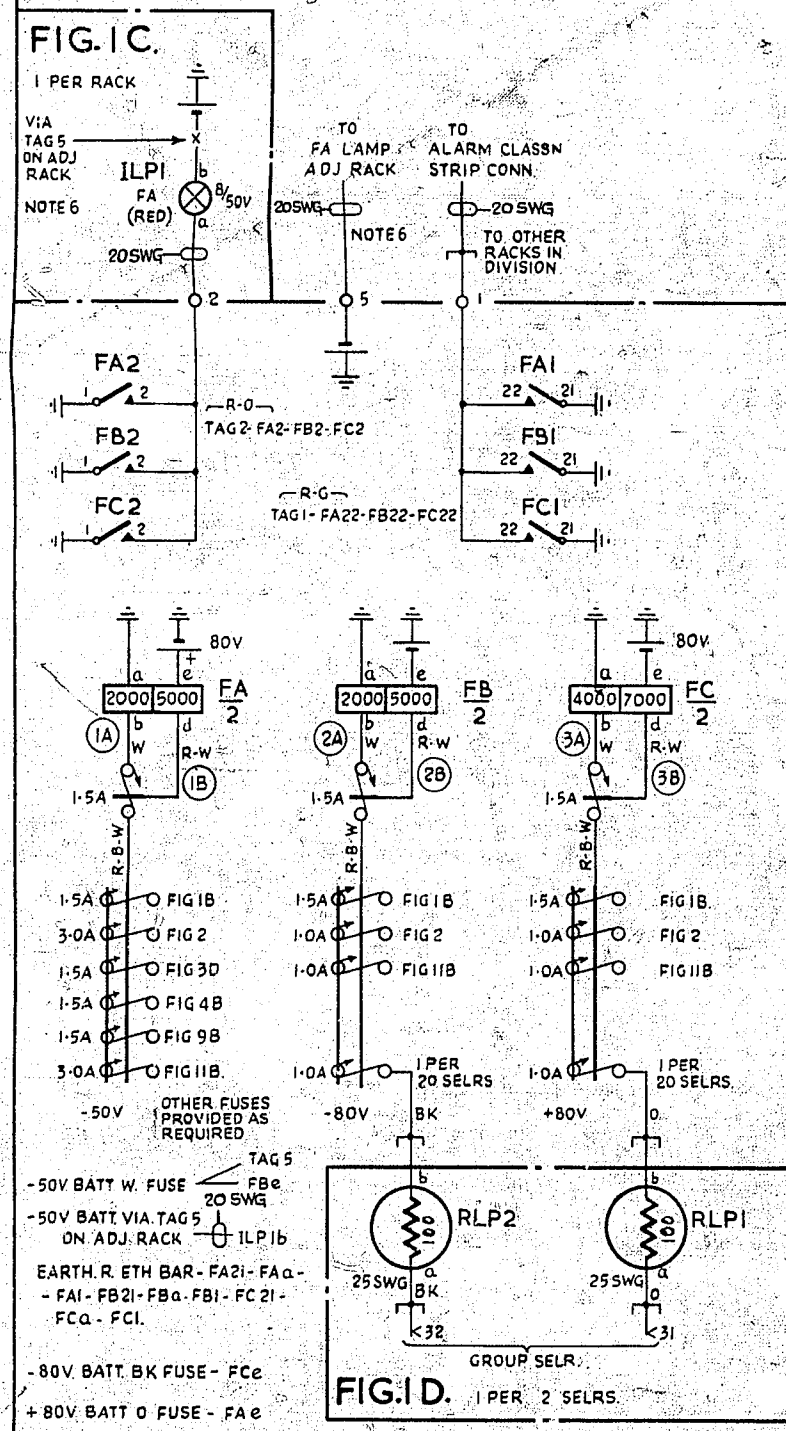


FIG.1B
1 PER RACK
REF:- GBW17010 OR EQUIV.

FIG.2
BATTERY JACKS
1 PER RACK

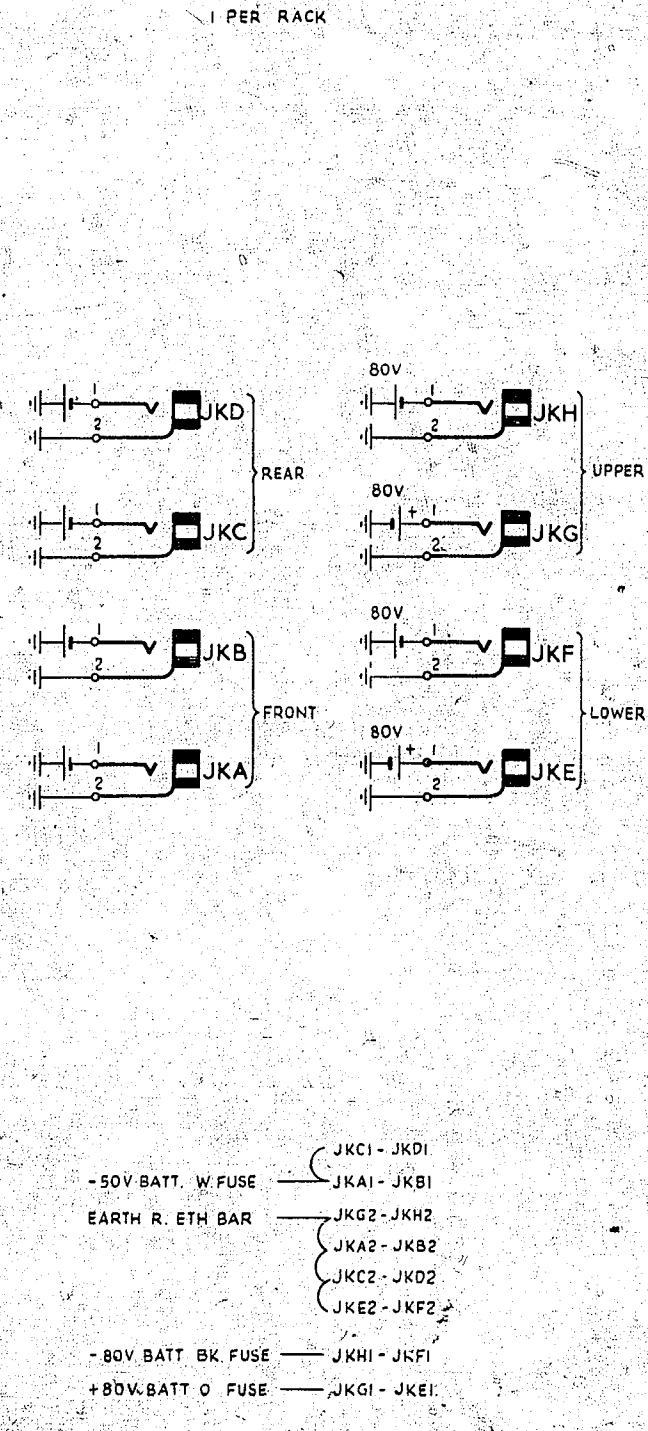


FIG.2
1 PER RACK

FIG.3A.
RELEASE ALARM
(PERIOD OF DELAY 9 SECS)

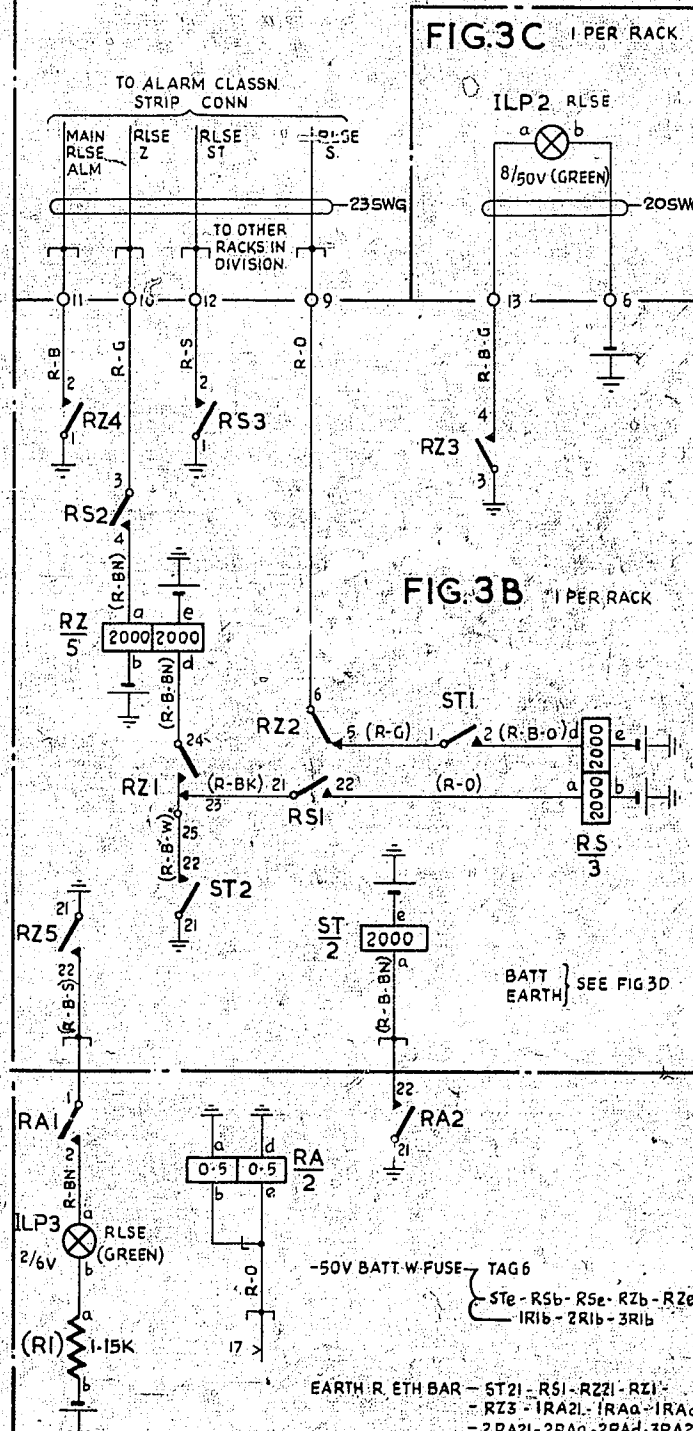


FIG.3D
1 PER 20 SELRS.

FIG.4A
SUPERVISORY ALARM
(PERIOD OF DELAY 6 MINS)

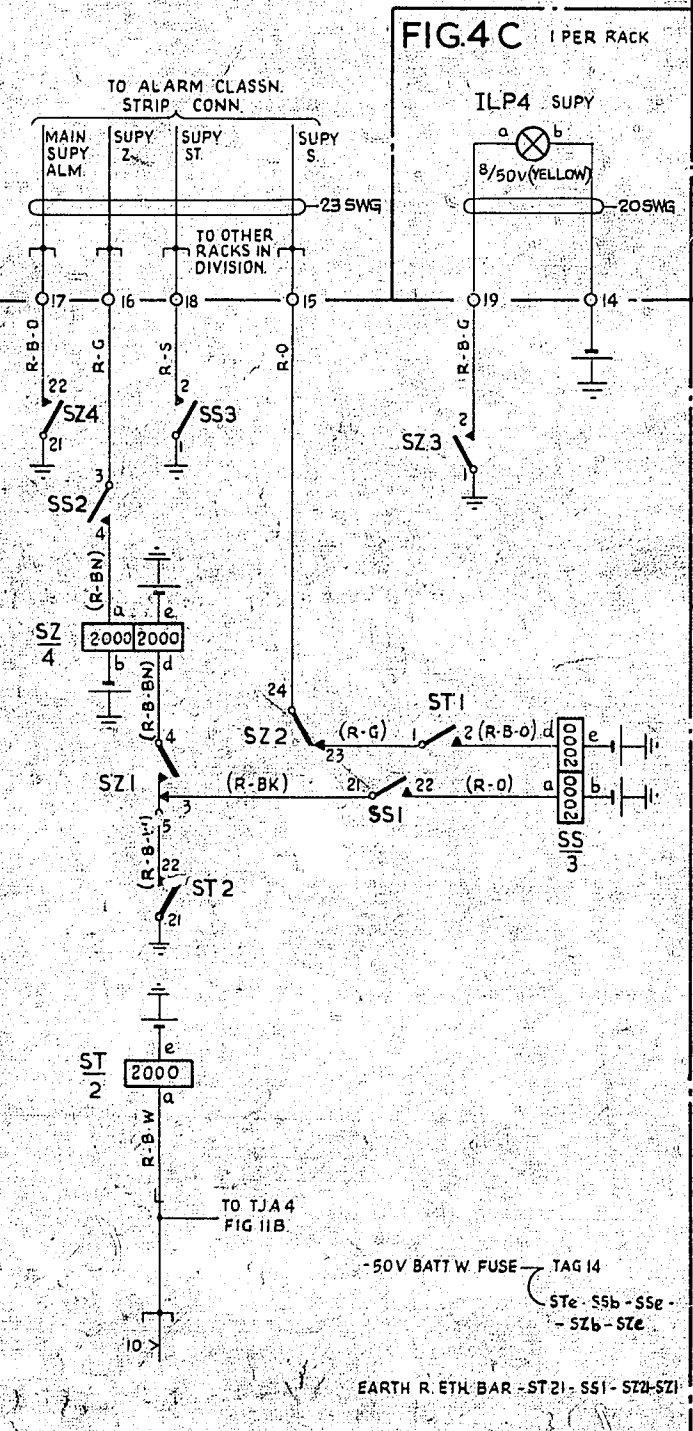


FIG.4B
1 PER RACK

FIG.5A
DISTRN. OF SA & ZA SIGNAL
PHASING PULSES

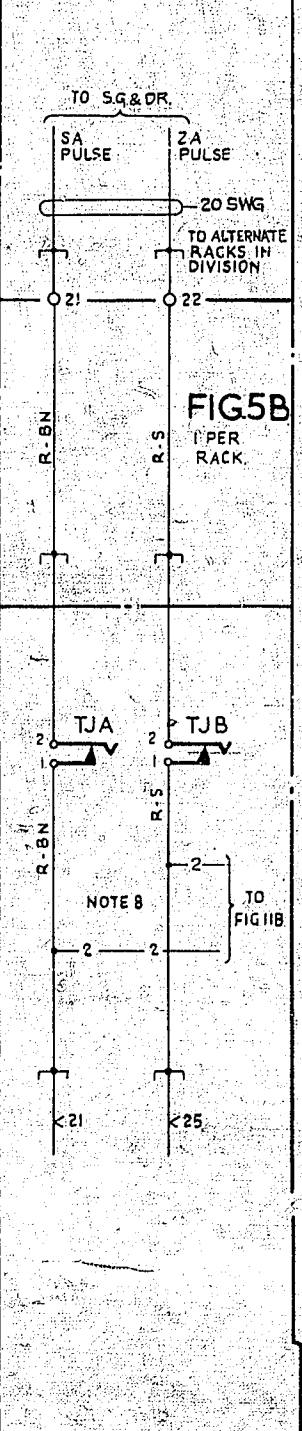


FIG.5C
1 PER SHELF
REF:- GBW17230 OR EQUIV.

ALLOCATION OF TAGS ON RACK MISCELLANEOUS STRIP CONNEXION					
TAG	SERVICE	TAG	SERVICE	TAG	SERVICE
1	FUSE ALARM	14	LP BATT S	26	OCC (ABS) START
2	TT BELL	15	Z	27	NP (DER) SIGNAL
3	FUSE ALM	16	ALM 6 MINS SUPY ALM	28	NP (DER) START
4	RLSE ALM LP BATT	17	ST	29	
5	TT BELL	18	LP	30	
6	S	19	SA PHASING PULSES	31	
7	ALM 9 SECS RLSE ALM	20	ZA PHASING PULSES	32	
8	ST	21	SHELVES AB TOTAL CALL ATTEMPTS ETHER	33	
9	LP	22	SHELVES CD	34	
10		23	SHELVES EF	35	
11		24		36	NC (MOM) SIGNAL
12		25		37	NC (MOM) START
13				38	OCC (ABS) SIGNAL
39				49	ROUTINER
40				50	RESET JACK
41					
42					
43					
44					
45					
46					
47					
48					
49					
50					
51	AD	64	P2	76	
52	RTNR ST	65	P2	77	
53	OA	66	SIG NC (MOM)	78	
54	OB	67	ST	79	
55	OC	68	SIG OCC (ABS)	80	
56	AB	69	ST AUTO RTNR ACCESS	81	
57	CD	70	SIG NP (DER)	82	
58	EF	71	SA PULSE	83	
59	SI	72	ZA PULSE	84	
60	RI	73		85	
61	S2	74		86	
62	R2	75		87	
63	PI			88	
89					
90					
91					
92					
93					
94					
95					
96					
97					
98					
99					
100					

- NOTES:**
- UNLESS OTHERWISE SPECIFIED, TAGS ARE ON RACK MISC STRIP CONN.
 - PLATE WIRING TO BE 25 SWG AND WIRING NOT OTHERWISE SPECIFIED TO BE 22 SWG IN FIG.1C ALL WIRING TO BE 25 SWG.
 - STRAPPED AS REQUIRED TO WORKING LEVELS EXCEPT THOSE SERVING RELAY SETS O/G FROM GROUP SELECTOR LEVELS TO SERVICE POSITIONS.
 - STRAPPED AS REQD TO LEVELS SERVING RELAY SETS O/G FROM GROUP SELR LEVELS TO SERVICE POSITIONS.
 - STRAPPED AS REQUIRED TO SPARE LEVELS.
 - FIGS. 15 & 16 AND CONNECTIONS SHOWN - 4 - 4 - IN FIG. 1C ARE ONLY REQUIRED ON RACKS EQUIPPED WITH SELECTORS FOR I/C INTERNATIONAL TRUNK CIRCUITS.
 - THE FA LAMP ON THE 2ND, 4TH, ETC. RACKS OF A SUITE SHALL BE SERVED BY THE FUSE ON THE 1ST, 3RD, ETC. RACKS RESPECTIVELY. THE FA LAMP ON THE 1ST, 3RD, ETC. RACKS SHALL BE SERVED BY THE FUSE ON THE 2ND, 4TH, ETC. RACKS RESPECTIVELY. WHEN THERE IS AN ODD NUMBER OF RACKS IN A SUITE, THE FUSE ON THE LAST EVEN RACK SHALL SERVE THE TWO ADJACENT ODD RACKS. WHEN THE ABOVE ARRANGEMENTS CANNOT BE FOLLOWED, THE FA LAMP SHALL BE SERVED BY A FUSE ON THE NEAREST RACK IN THE SAME SUITE, OR, IN THE CASE OF AN ISOLATED RACK, BY A FUSE IN AN ADJACENT SUITE IN THE SAME SECTION.
 - BRACKETTED PORTION OF SIGNAL DESIGNATION IS NOT OPERATIVE ON THIS RACK.
 - CONNECTIONS SHOWN - 2 - ARE REQUIRED ON SHELF A ISOLATION JACKS ONLY.
 - FIG.13 IS NOT REQUIRED ON RACKS EQUIPPED WITH SELECTORS FOR I/C INTERNATIONAL TRUNK CIRCUITS.

AUTOMATIC TELEX SYSTEM

RACK COMMON SERVICES

GROUP SELECTOR RACK

(70673) / 10-463

AMENDMENT PARTICULARS	ISSUE DATE	APPD	SIZE	50V E
N.Z.P.O.			GBW 17320	SHEET 1-3



FIG. 12A
AUTOMATIC
ROUTINER-RESET
JACK

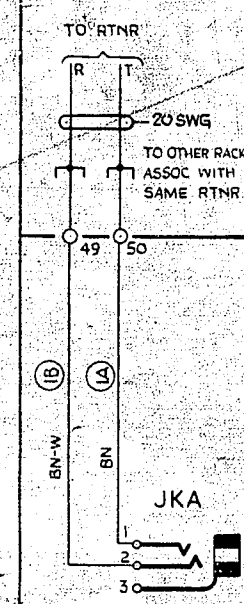


FIG. 12B
1 PER RACK

FIG. 13A
TOTAL CALL ATTEMPTS
METER
(IF REQUIRED)
NOTE 9

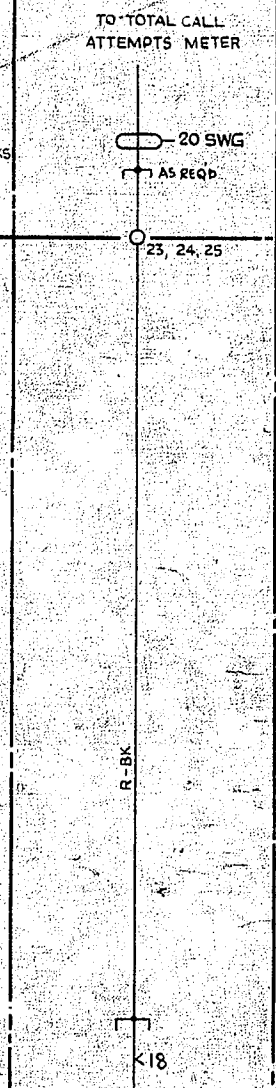


FIG. 13B
1 PER 20 SELRS
REF: GBW 17090

FIG. 14A
OVERFLOW METER

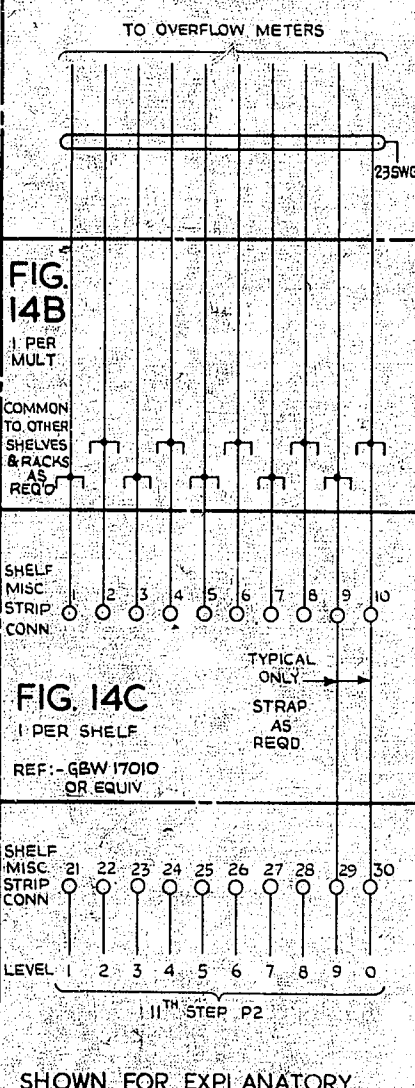


FIG. 14B
1 PER MULT

FIG. 14C
1 PER SHELF
REF: GBW 17010
OR EQUIV

SHOWN FOR EXPLANATORY
PURPOSES ONLY

FIG. 15A
CALL COUNT METER
IF REQUIRED
NOTE 10

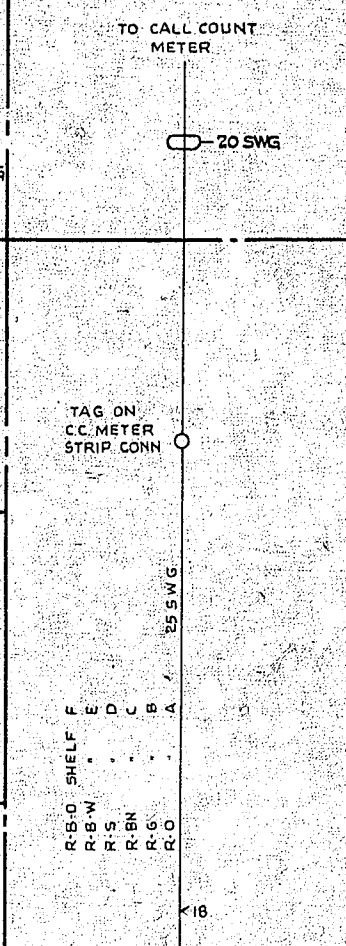


FIG. 15B
1 PER SELECTOR

FIG. 16A
CALL DURATION METER
IF REQUIRED
NOTE 10

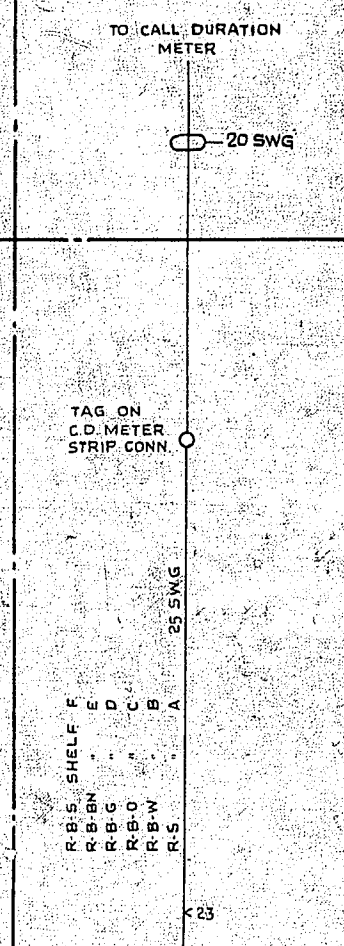


FIG. 16B
1 PER SELECTOR

				AUTOMATIC TELEX SYSTEM RACK COMMON SERVICES GROUP SELECTOR RACK	
				(70673)	19-4-63
AMENDMENT PARTICULARS		ISSUE DATE		APPR.	SIZE L SOV. E
N.Z.P.O.	DRAWN	CHECKED	WIRING	CIRCUIT	GBW 17320
					SHEET 3-3