

FIG.1 50^{c/s} FORK SUPPLY CHANGEOVER & ALARM RELAY SET (A)

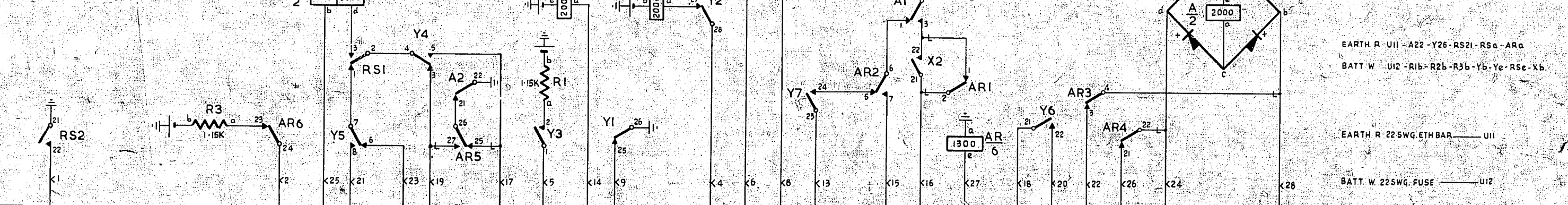
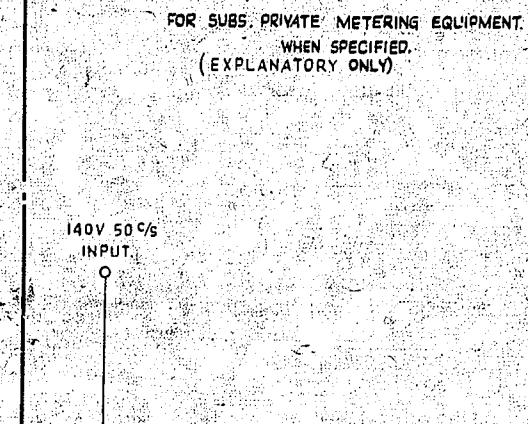


FIG.6A PART OF 450^{c/s} GENERATOR (A)



- NOTES**
1. FUSING
FIG.1 0.5A PER CIRCUIT
FIG.2 0.5A " "
FIG.4 0.5A " "
 2. SHELF JACK U POINTS 9 & 11 MAKE CONTACT WHEN RELAY SET IS REMOVED.
 3. WIRING NOT OTHERWISE SPECIFIED TO BE 25 SWG
 4. Ø FOR WIRING SEE GBW 17380 OR EQUIV.

FIG.4 ALARM CUT OFF KEY & LAMP PER RACK

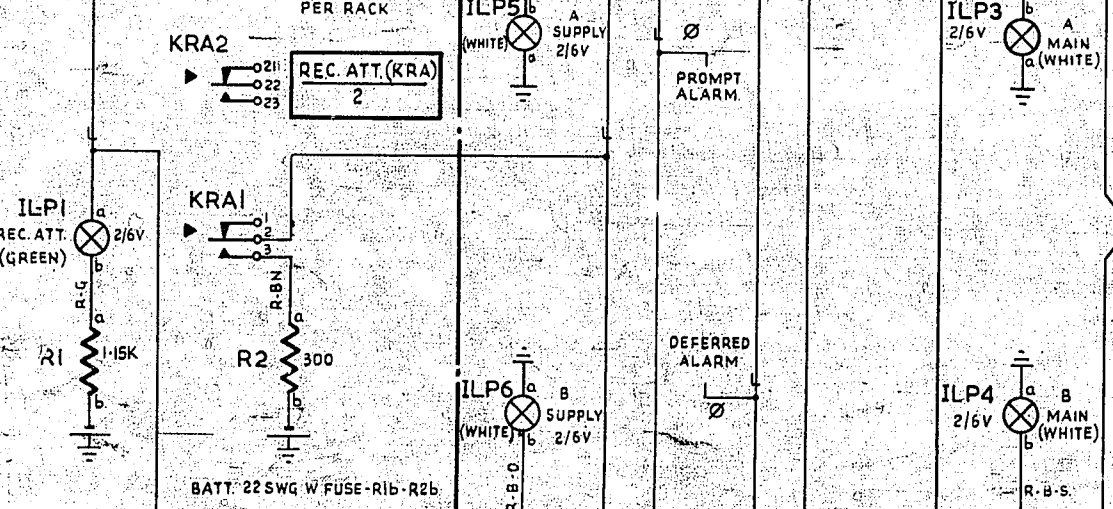


FIG.3 SUPPLY CONTROL CCT.

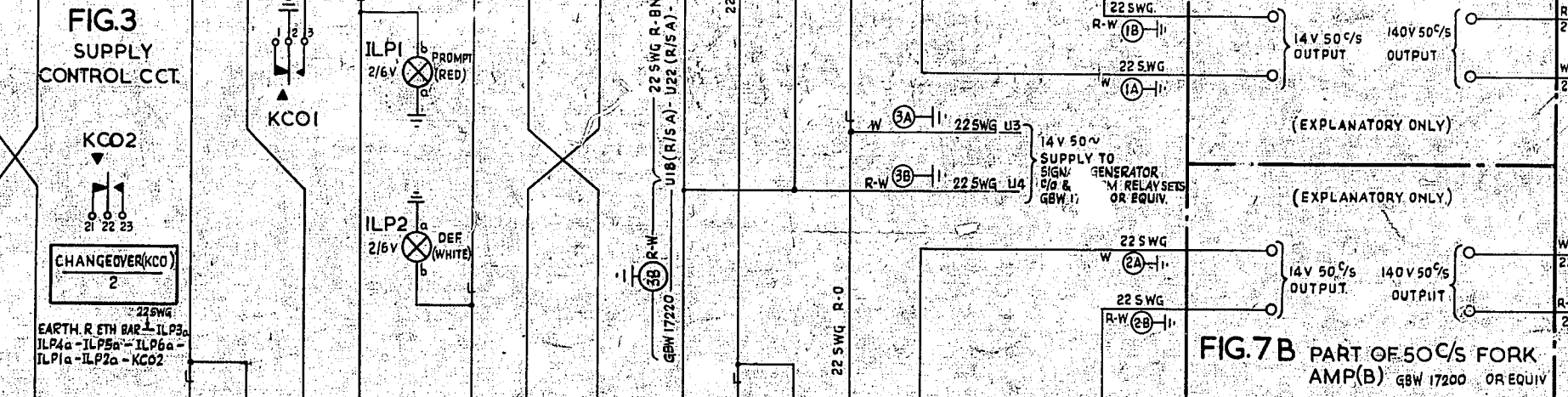


FIG.7A PART OF 50^{c/s} FORK AMP (A) GBW 17200 OR EQUIV.

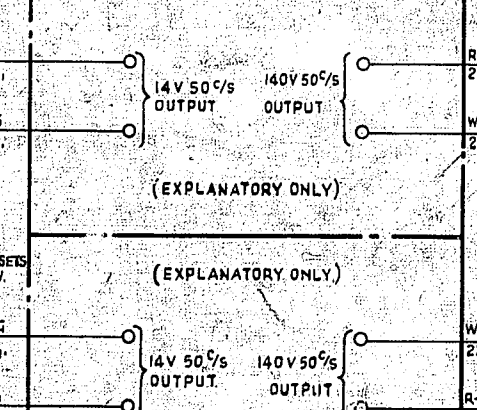


FIG.7B PART OF 50^{c/s} FORK AMP (B) GBW 17200 OR EQUIV.

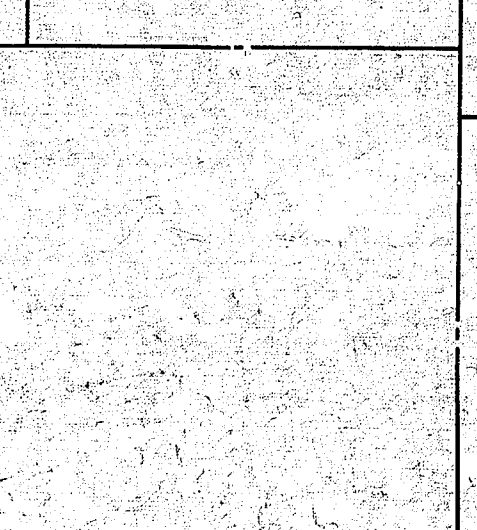


FIG.5 140V 50^{c/s} TEST SUPPLY CHANGEOVER SWITCH

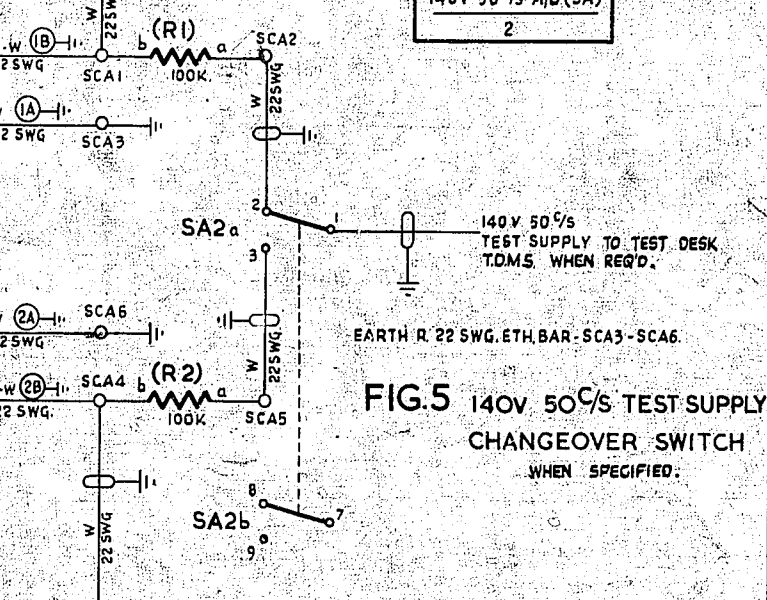


FIG.7A PART OF 450^{c/s} GENERATOR (B)

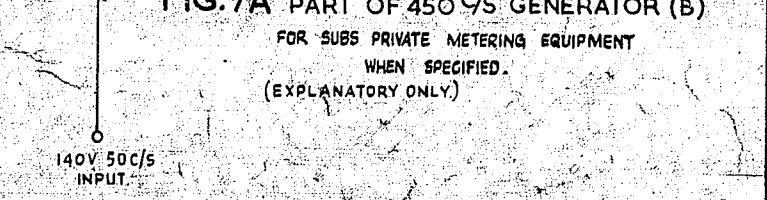


FIG.2 50^{c/s} FORK SUPPLY CHANGEOVER & ALARM RELAY SET (B) EXPLANATORY ONLY.



AUTOMATIC TELEX SYSTEM			
50 ^{c/s} SUPPLY			
CHANGEOVER AND			
ALARM RELAY SET			
AMENDMENT PARTICULARS		ISSUE DATE	APP
N Z P O		19.4.63	SIZE 50V E
DRAWN		CHECKED	WIRING
CIRCUIT		GBW 17290	

