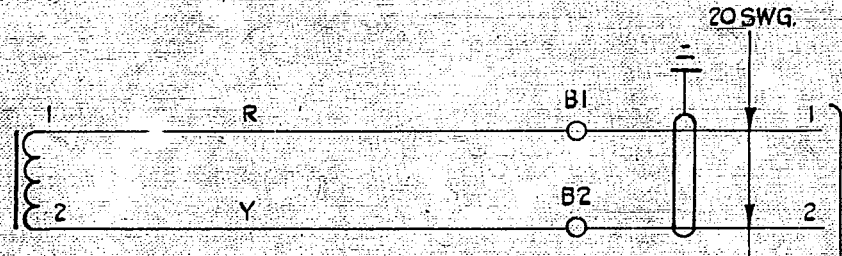
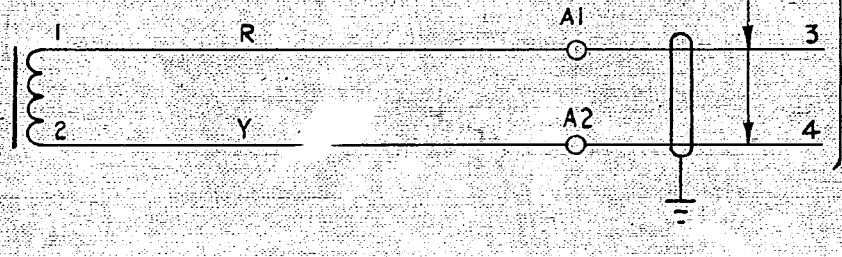


0  
5 Centimetres  
10  
15  
20  
25  
30

PICK-UP  
COIL  
(28000)



DRIVE  
COIL  
(3,500)



TO FORK DRIVE  
AMPLIFIER  
GBW 17200 OR EQUIV

**NOTES**

1. WIRING TO BE 25 SWG. B.T.C. WITH SLEEVING RED OR YELLOW AS INDICATED.

				AUTOMATIC TELEX SYSTEM SYNCHROSCOPE FORK PANEL DRIVE & PICK-UP COILS (PANEL TELEGRAPH N° 74A)	
(10673)				1.	19-4-63
AMENDMENT PARTICULARS				ISSUE	DATE
N.Z.P.O.				APPR.	SIZE F
DRAWN		CHECKED		WIRING	
				CIRCUIT	
				GBW 17210	

JL