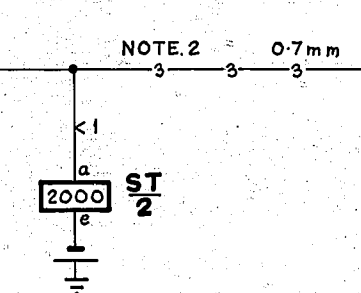
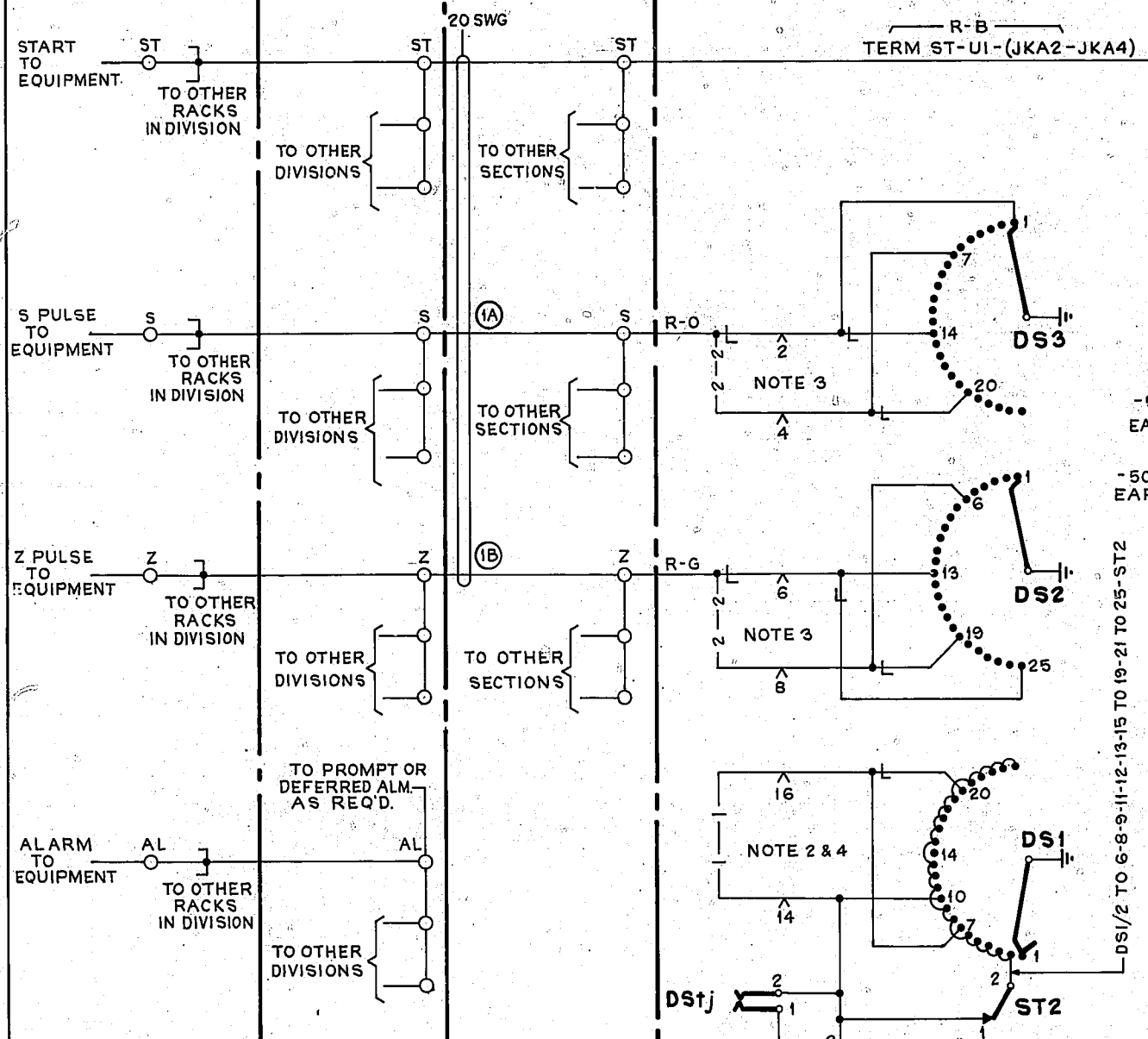


0  
5  
10  
15  
20  
25  
30  
Centimeters

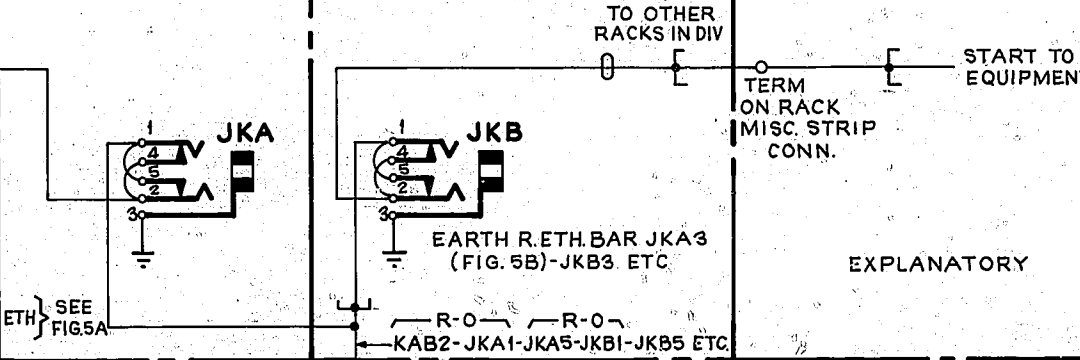
**FIG. 1 ALARM DELAY RELAY SET.**



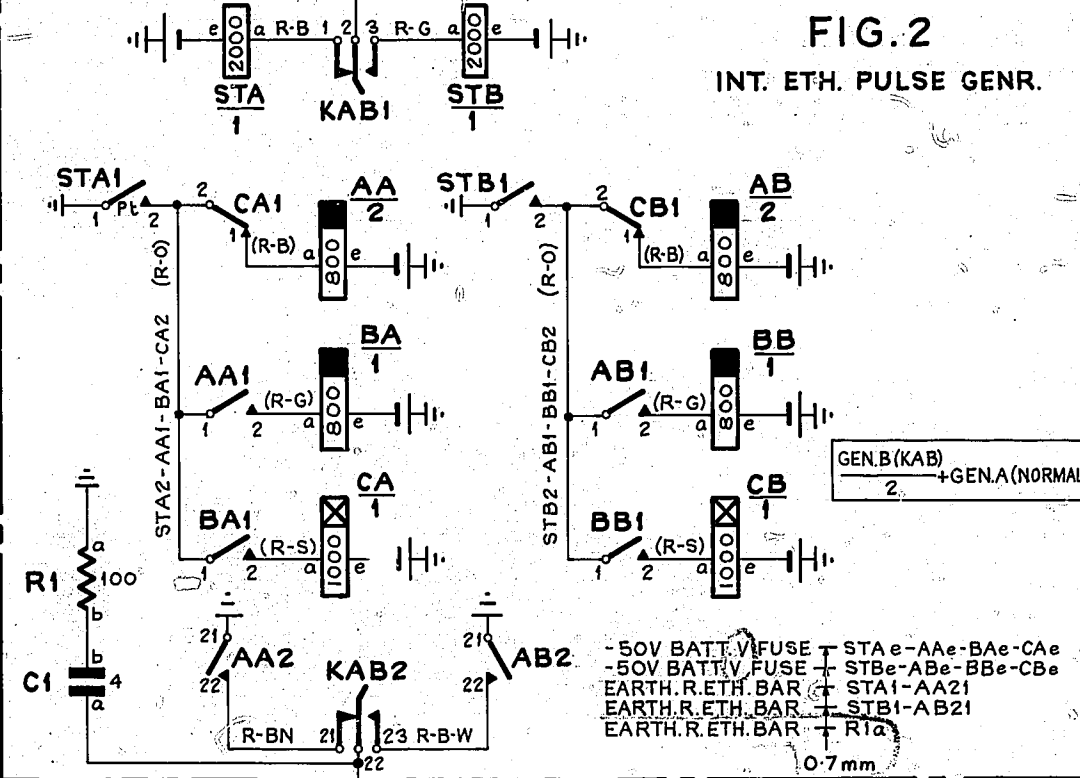
**FIG. 5B**  
INT. ETH. START DISTN  
TO 9 SEC ALM DELAY  
SET

**FIG. 5A**  
INT. ETH. START DISTN  
1 PER DIVISION OR EQUIV

**FIG. 5C**  
RACK DISTN.  
1 PER RACK



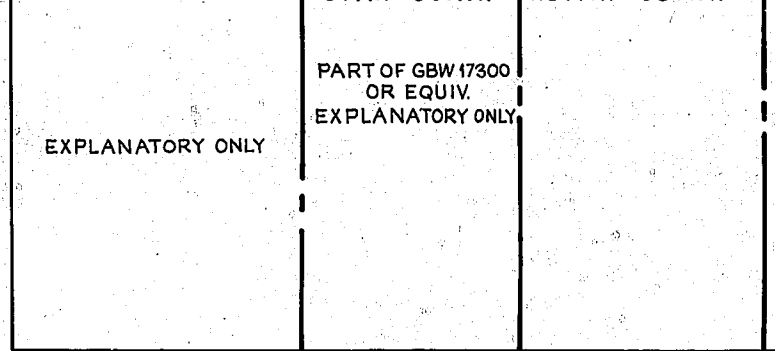
**FIG. 2**  
INT. ETH. PULSE GENR.



**FIG. 7**  
DELAYED ALARM  
RACK DISTRIBUTION

**FIG. 4**  
ALARM  
CLASSIFICATION  
STRIP CONN.

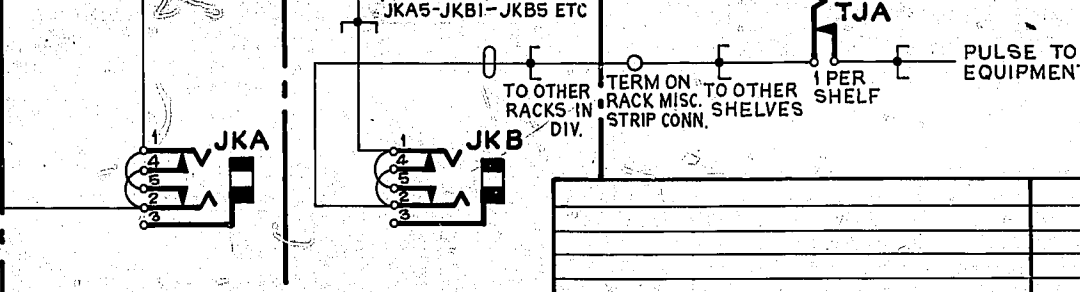
**FIG. 3**  
RACK ALARM  
CLASSIFICATION  
STRIP CONN.



**FIG. 6B**  
INT. ETH. PULSE  
DISTN. TO 9 SEC.  
ALM. DELAY SET

**FIG. 6A**  
INT. ETH. PULSE  
DISTN.  
1 PER DIVISION OR EQUIV

**FIG. 6C**  
RACK DISTN EXPLANATORY ONLY



- NOTES:-**
- FUSING 50V. FIG. 1 1.5A PER R/S. FIG. 2 0.5A GEN. A RELAYS 0.5A GEN. B RELAYS
  - FOR 9 SEC. ALARM DELAY CONNEXIONS -3-3- AND -1-1- APPLY
  - FOR 3 MIN. ALARM DELAY CONNEXIONS -4-4- AND -2-2- APPLY
  - FOR 6 MIN. ALARM DELAY CONNEXIONS -4-4- AND -1-1- APPLY
  - Ø FOR WIRING SEE GBW 17370 OR EQUIV.
  - PLATE WIRING & WIRING OF PLUG-IN UNIT. FIG. 1 TO BE 0.5mm WIRING NOT OTHERWISE SPECIFIED TO BE 0.7mm
  - SHELF JACK U-POINTS 9 & 11 TO MAKE CONTACT WHEN RELAY SET FIG. 1 IS REMOVED
  - ON SOME EARLY EQUIPMENT BATTERY WIRING IS W

AUTOMATIC TELEX SYSTEM DELAYED ALARM AND INTERRUPTED EARTH DISTRIBUTION			
RETRACED. NOTE 8 AND C1 & R1 FIG. 2 ADD (122101)	2	14-9-73	JWE
(70501)	1	27-3-63	
AMENDMENT PARTICULARS	ISS	DATE	APD
DRAWN	CHECKED	WIRING	CIRCUIT

GBW 17120