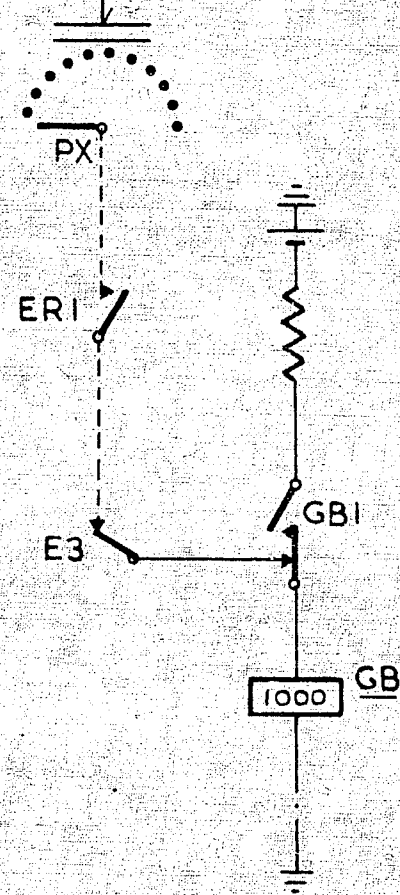
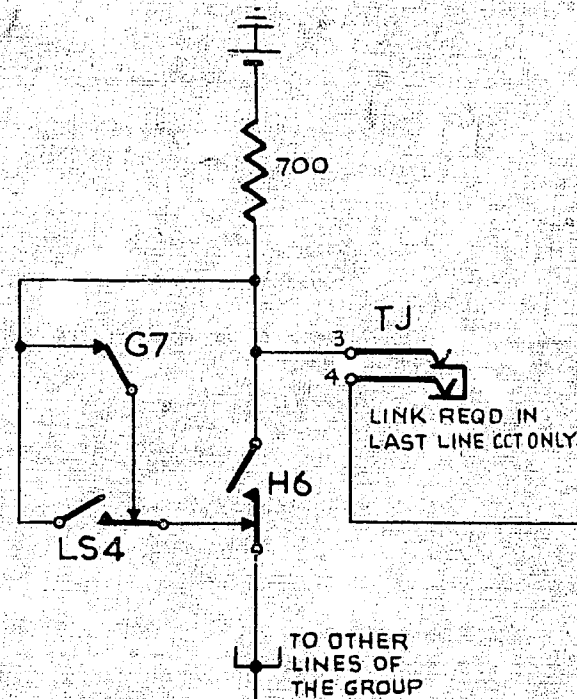


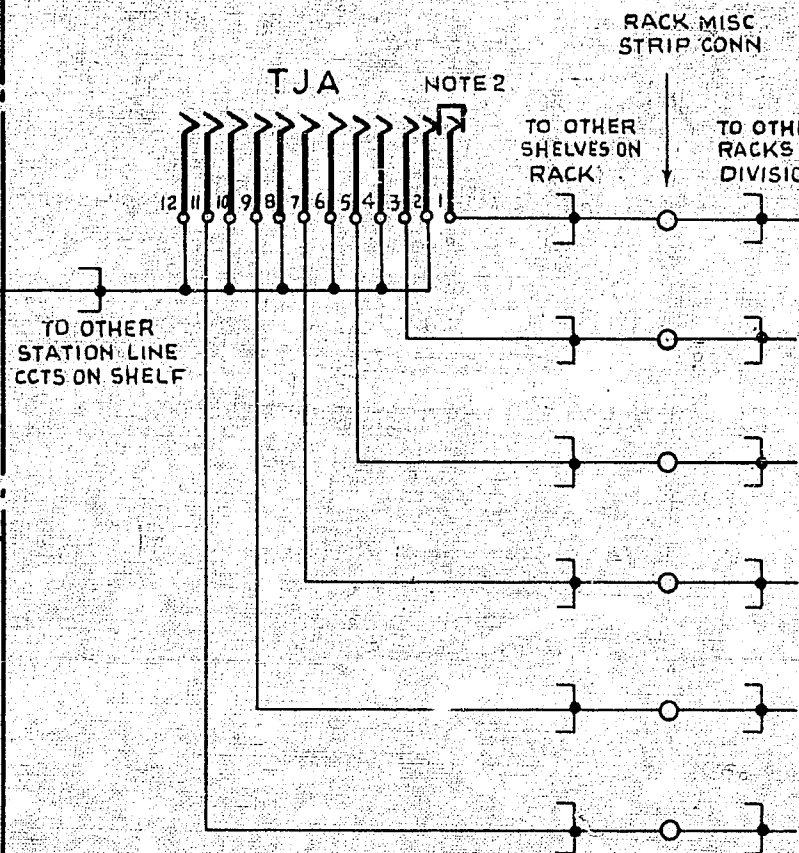
PART OF STATION LINE CIRCUIT  
(GBW 17000 OR EQUIV.)  
LAST LINE OF GROUP  
(EXPLANATORY ONLY)



PART OF FINAL SELECTOR  
(GBW 17020 OR EQUIV.)  
(EXPLANATORY ONLY)

FIG 2 METER ACCESS JACK  
STATION LINE CIRCUIT RACK

PER SHELF



TJA  
12

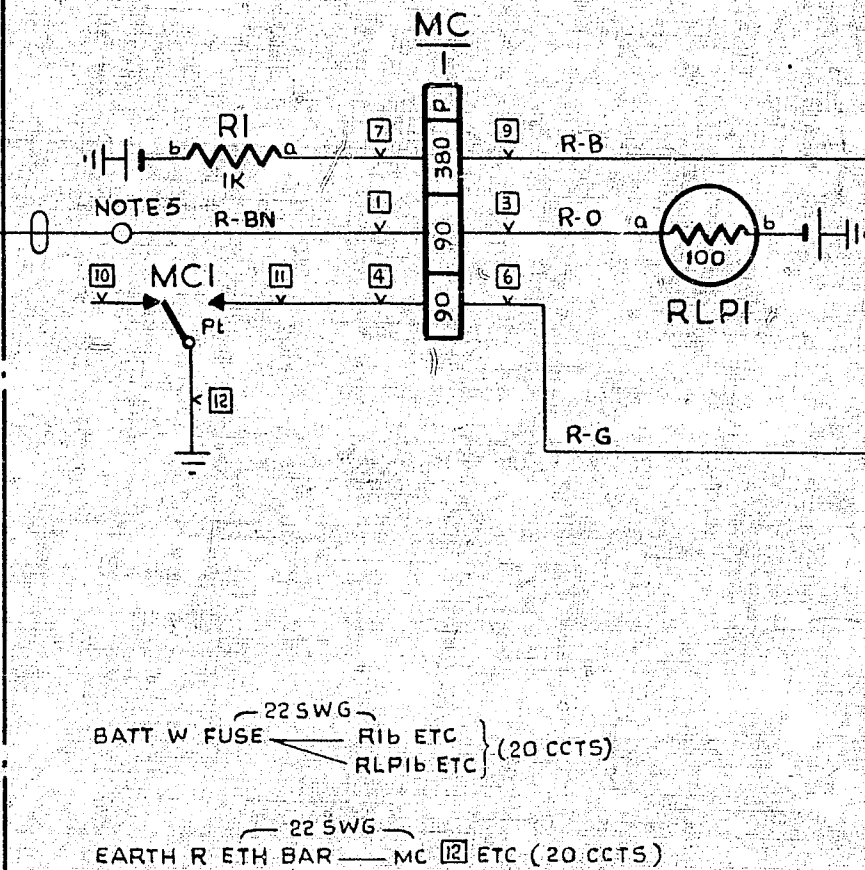
NOTES

1. FUSE  
FIG 1A 1A PER 20 CCTS  
FIG 1B 1A PER 40 METERS
- 2 TO CONNECT A METERING CIRCUIT TO A STATION LINE CIRCUIT SHELF COMMON, INSERT A LINK N, YELLOW AS REQUIRED
- 3 WIRING NOT OTHERWISE SPECIFIED TO BE 25 5 SWG
- 4  $\emptyset$  FOR WIRING SEE GBW 17310 OR EQUIV.
- 5 TAG NUMBER CORRESPONDS TO POSITION NUMBER OF ASSOCIATED METER

FIG 1A METER CONTROL RELAY

PER CIRCUIT

M. A. R.



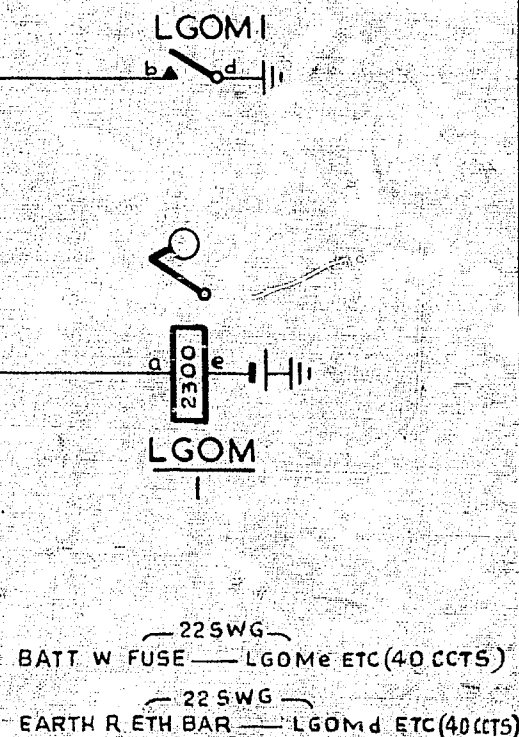
BATT. W. FUSE — 22 5 SWG — RIB ETC (20 CCTS)  
RLPIb ETC

EARTH R. ETH BAR — 22 5 SWG — MC 10 ETC (20 CCTS)

FIG 1B LINE GROUP  
OVERFLOW METER

PER CIRCUIT

M. A. R.



BATT. W. FUSE — 22 5 SWG — LGOMc ETC (40 CCTS)  
LGOMd ETC (40 CCTS)

EARTH R. ETH BAR — 22 5 SWG — LGOMd ETC (40 CCTS)

AUTOMATIC TELEX SYSTEM STATION LINE GROUP OVERFLOW METER				
(70501)				
AMENDMENT PARTICULARS		ISSUE	DATE	APPD
			27-3-63	
				50V E
NZPO		DRAWN	CHECKED	WIRING CIRCUIT

GBW 17060

