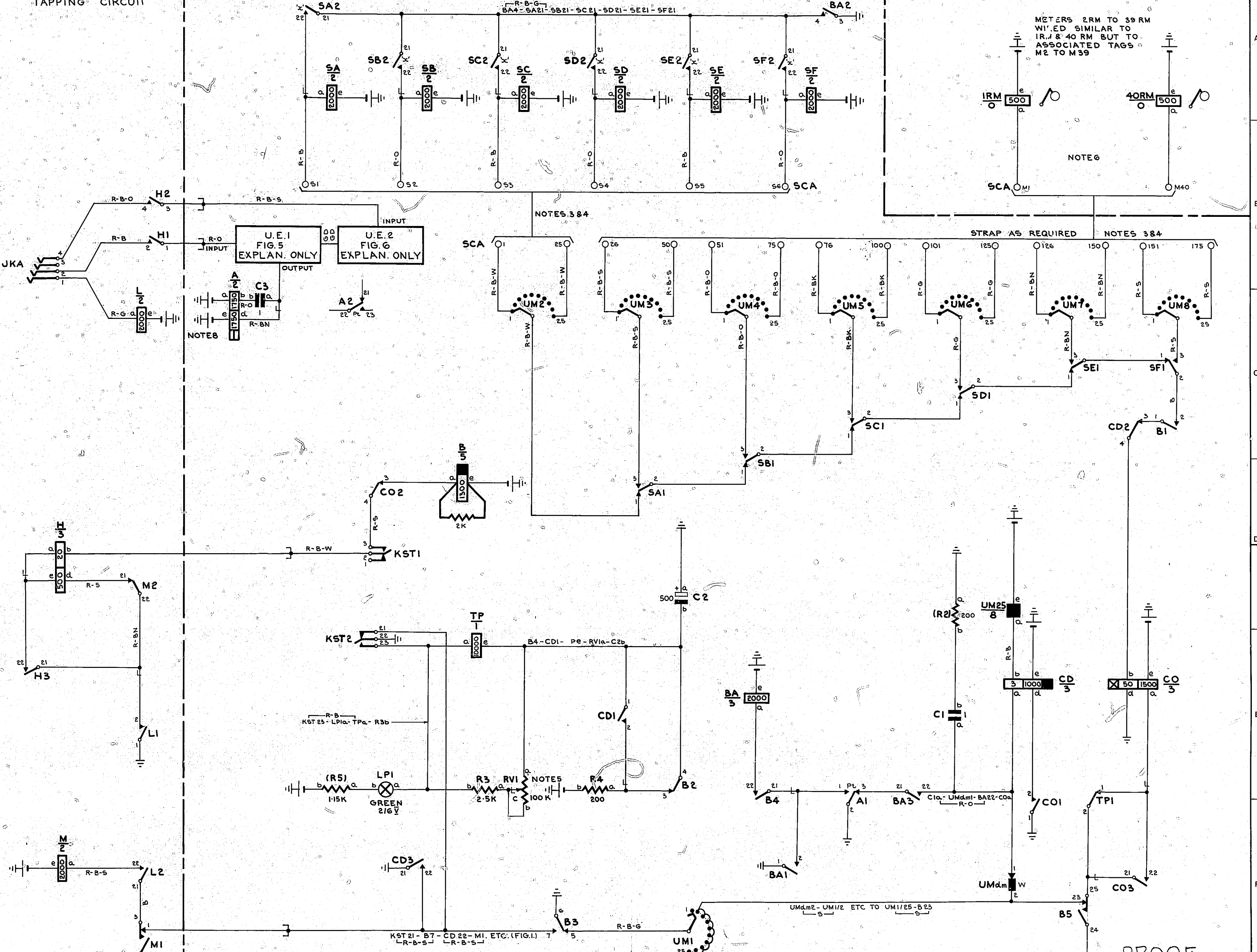
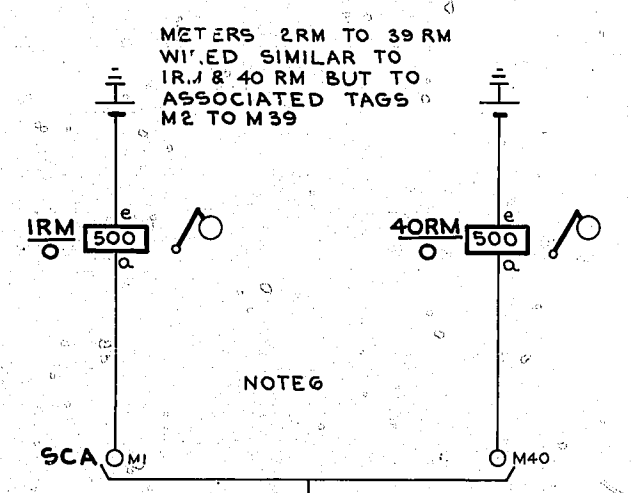


**FIG. 1**  
TAPPING CIRCUIT

**FIG. 2** CONTROL EQUIPMENT



**FIG. 3** ROUTE METERS



**NOTES.**

1. FUSES: 0.5A PER 10CCTS FIG. 1 (FS1 & FS2)  
1.0A PER FIGS. 5 & 6 & R6 FIG. 2 (FS4)  
0.5A PER FIGS. 2 & 3 (FS3)
2. ALL WIRING TO BE 0.5mm UNLESS OTHERWISE SPECIFIED
3. WHERE ONE DIGIT ONLY IS REQUIRED TO IDENTIFY ROUTE, TERMS 2-11 TO BE STRAPPED TO ROUTE METER
4. SPARE CONTACTS ASSOCIATED WITH TERMS 1-175 TO BE STRAPPED TO SPARE ROUTE METER
5. RV1 IS PROVIDED TO PERMIT RELEASE TIME OF RELAY 'TP' TO BE ADJUSTED 6-12 SECS
6. COLOURS FOR LEADS FROM 'M' TAGS TO METERS ARE AS FOLLOWS  
TAGS M1 TO M25 - R-B-G  
TAGS M26 TO M40 - R-B-BN
7. EQUIPMENT DESIGNATIONS ARE SHOWN FOR WIRING PURPOSES ONLY AND WILL NOT BE SIGNWRITTEN. (FIGS. 5 & 6)
8. RELAY 'A' IS DIFFERENTIALLY CONNECTED
9. LETTER 'F' ASSOCIATED WITH BATTERY & EARTH SYMBOLS DENOTES CONNECTION TO FILTERED SUPPLY.

**PORTABLE ROUTE ANALYSER 2000 TYPE**

|                                    |                |                    |      |      |        |
|------------------------------------|----------------|--------------------|------|------|--------|
| ISS DATE                           | DEL            | ORDER              | CHKD | APPD | CHANGE |
| DRN T- EQPT CKD                    | ORIGIN T- EQPT |                    |      |      |        |
| TCD L.N.                           | APPD           | STANDARD ATW 22001 |      |      |        |
| NZPO ENGINEER-IN-CHIEF, WELLINGTON |                |                    |      |      |        |
| SHT 1 OF 2                         | GBW16170       |                    |      |      |        |
| SIZE A1                            |                |                    |      |      |        |

PROOF

50V/H

UD 237

**FIG. 5.**  
DETECTOR

NOTE 7.

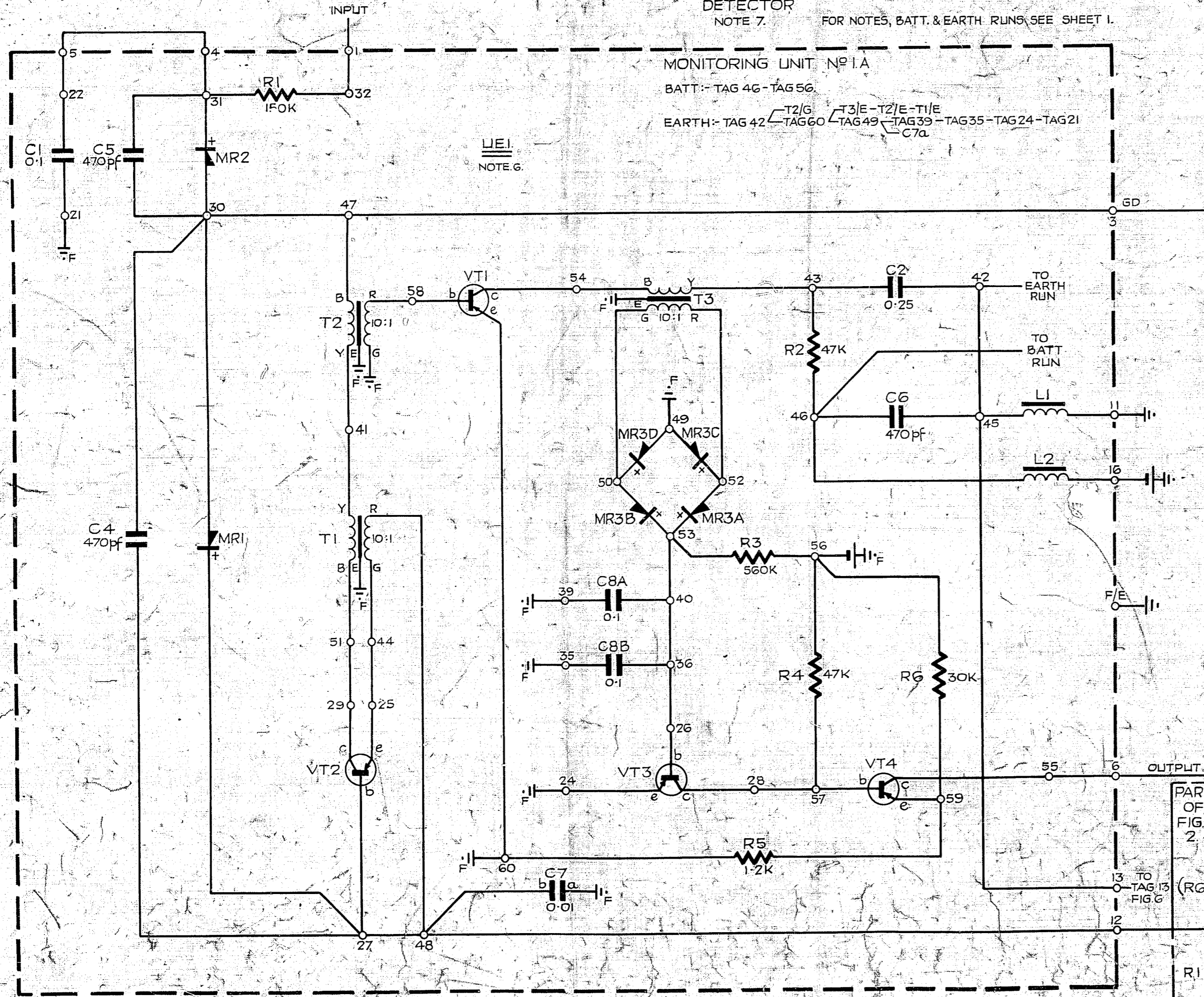
FOR NOTES, BATT. & EARTH RUNS SEE SHEET 1.

MONITORING UNIT No 1A

BATT:- TAG 46 - TAG 56

EARTH:- TAG 42 ← T2/G TAG 60 ← T3/E - T2/E - T1/E TAG 49 ← TAG 39 - TAG 35 - TAG 24 - TAG 21 C7a

L.I.E.1  
NOTE 6.



**FIG. 6.**

FOR NOTES, BATT. & EARTH RUNS SEE SHEET 1.

SEQUENCING GUARD

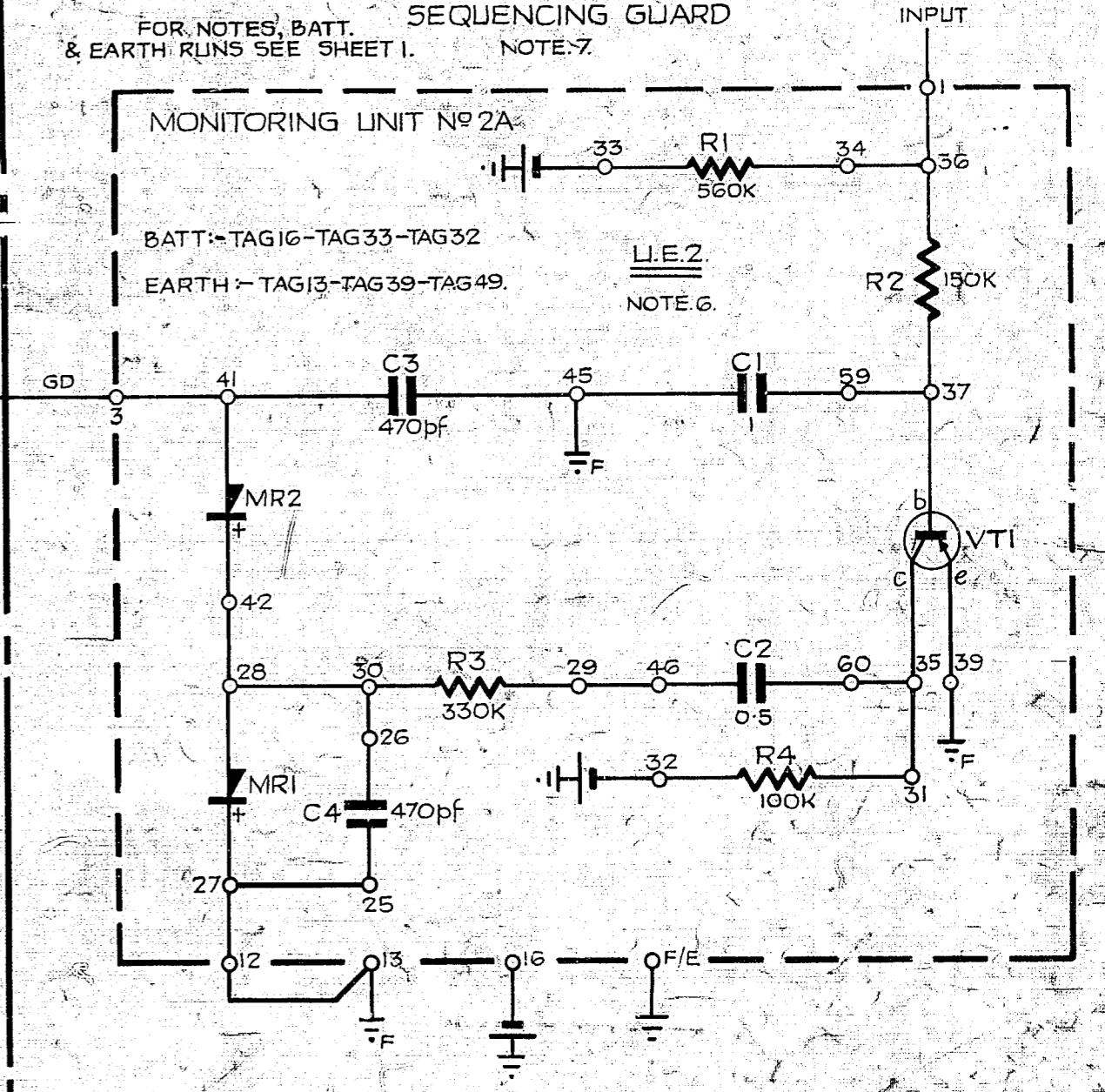
NOTE 7.

MONITORING UNIT No 2A

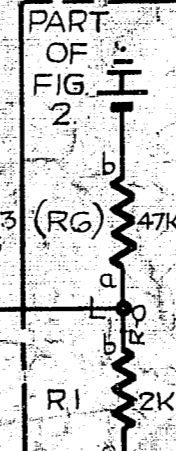
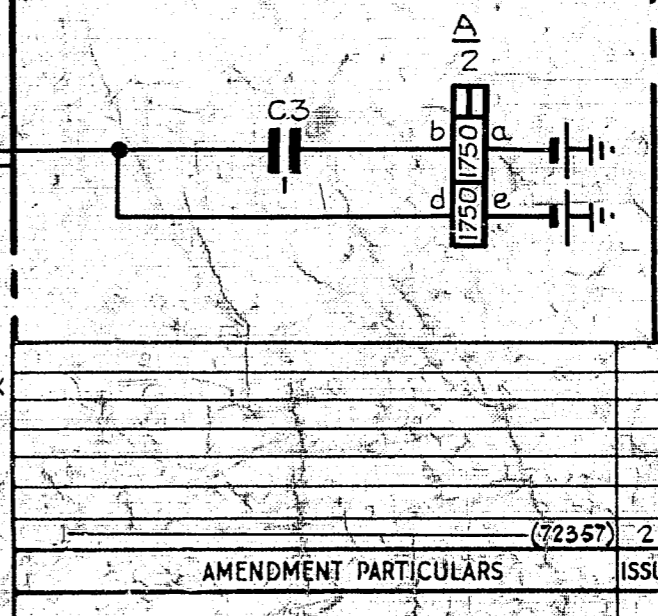
BATT:- TAG 16 - TAG 33 - TAG 32

EARTH:- TAG 13 - TAG 39 - TAG 49.

L.I.E.2  
NOTE 6.



PART OF FIG. 2.  
EXPLANATORY ONLY.



PART OF FIG. 2.

(RG)

R1 2K

R2 47K

R3 47K

R4 2K

R5 2K

R6 2K

R7 2K

R8 2K

R9 2K

R10 2K

R11 2K

R12 2K

R13 2K

R14 2K

R15 2K

R16 2K

R17 2K

R18 2K

R19 2K

R20 2K

R21 2K

R22 2K

R23 2K

R24 2K

R25 2K

R26 2K

R27 2K

R28 2K

R29 2K

R30 2K

R31 2K

R32 2K

R33 2K

R34 2K

R35 2K

R36 2K

R37 2K

R38 2K

R39 2K

R40 2K

R41 2K

R42 2K

R43 2K

R44 2K

R45 2K

R46 2K

R47 2K

R48 2K

R49 2K

R50 2K

R51 2K

R52 2K

R53 2K

R54 2K

R55 2K

R56 2K

R57 2K

R58 2K

R59 2K

R60 2K

R61 2K

R62 2K

R63 2K

R64 2K

R65 2K

R66 2K

R67 2K

R68 2K

R69 2K

R70 2K

R71 2K

R72 2K

R73 2K

R74 2K

R75 2K

R76 2K

R77 2K

R78 2K

R79 2K

R80 2K

R81 2K

R82 2K

R83 2K

R84 2K

R85 2K

R86 2K

R87 2K

R88 2K

R89 2K

R90 2K

R91 2K

R92 2K

R93 2K

R94 2K

R95 2K

R96 2K

R97 2K

R98 2K

R99 2K

R100 2K

R101 2K

R102 2K

R103 2K

R104 2K

R105 2K

R106 2K

R107 2K

R108 2K

R109 2K

R110 2K

R111 2K

R112 2K

R113 2K

R114 2K

R115 2K

R116 2K

R117 2K

R118 2K

R119 2K

R120 2K

R121 2K

R122 2K

R123 2K

R124 2K

R125 2K

R126 2K

R127 2K

R128 2K

R129 2K

R130 2K

R131 2K

R132 2K

R133 2K

R134 2K

R135 2K

R136 2K

R137 2K

R138 2K

R139 2K

R140 2K

R141 2K

R142 2K

R143 2K

R144 2K

R145 2K

R146 2K

R147 2K

R148 2K

R149 2K

R150 2K

R151 2K

R152 2K

R153 2K

R154 2K

R155 2K

R156 2K

R157 2K

R158 2K

R159 2K

R160 2K

R161 2K

R162 2K

R163 2K

R164 2K

R165 2K

R166 2K

R167 2K

R168 2K

R169 2K

R170 2K

R171 2K

R172 2K

R173 2K

R174 2K

R175 2K

R176 2K

R177 2K

R178 2K

R179 2K

R180 2K

R181 2K

R182 2K

R183 2K

R184 2K

R185 2K

R186 2K

R187 2K

R188 2K

R189 2K

R190 2K

R191 2K

R192 2K

R193 2K

R194 2K

R195 2K

R196 2K

R197 2K

R198 2K

R199 2K

R200 2K

R201 2K

R202 2K

R203 2K

R204 2K

R205 2K

R206 2K

R207 2K

R208 2K

R209 2K

R210 2K

R211 2K

R212 2K

R213 2K

R214 2K

R215 2K

R216 2K

R217 2K

R218 2K

R219 2K

R220 2K

R221 2K

R222 2K

R223 2K

R224 2K

R225 2K

R226 2K

R227 2K

R228 2K

R229 2K

R230 2K

R231 2K

R232 2K

R233 2K

R234 2K

R235 2K

R236 2K

R237 2K

R238 2K

R239 2K

R240 2K

R241 2K

R242 2K

R243 2K

R244 2K

R