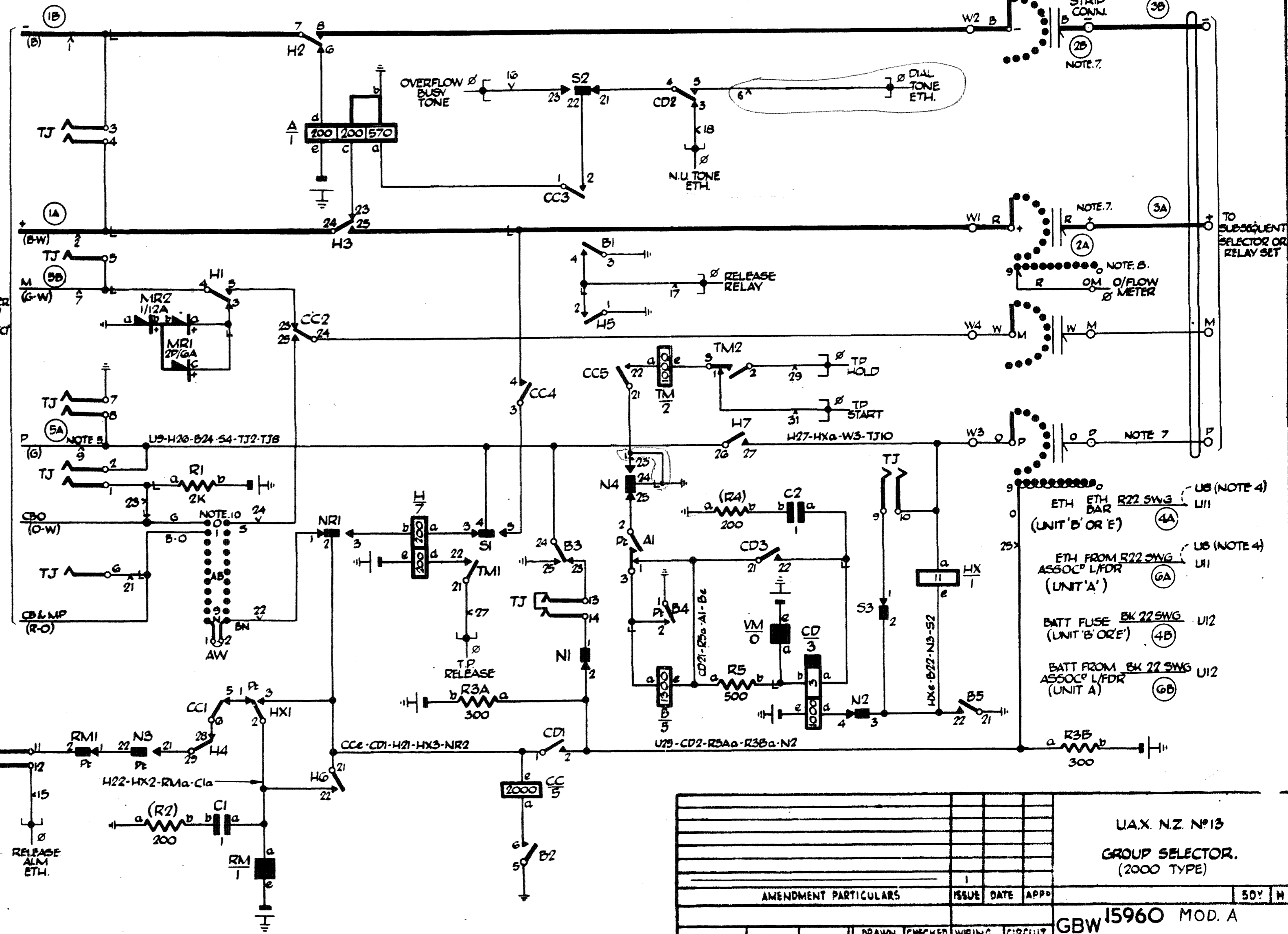
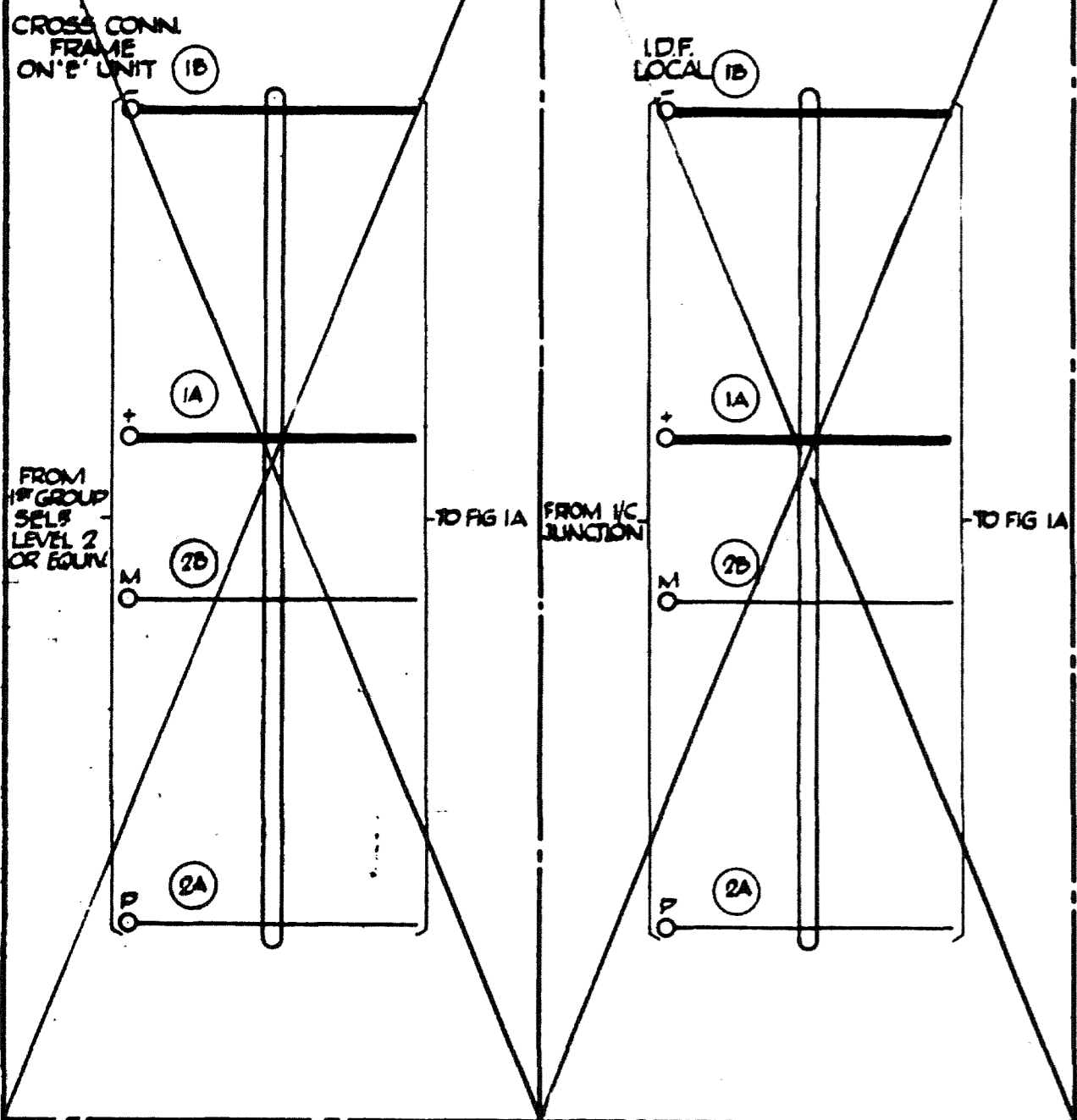


FIG. IC (WHEN USED AS 2ND GRP SELR)

FIG IB

FIG IA



NOTES:-
 1. FUSE:-1.0A PER GROUP SELECTOR (UNIT 'B' OR 'E') 3.0A PER GROUP SELECTOR AND ASSOCIATED LINE FINDER (UNIT 'A')
 2. ALL WIRING TO BE 25 SWG UNLESS OTHERWISE SPECIFIED.
 3. Ø FOR WIRING SEE GBW 15730 OR EQUIV.
 4.
 5. SHELF JACK 'U' POINTS 9 & 11 TO MAKE CONTACT WHEN SELECTOR IS REMOVED
 6. CCB BARRING IS NOT REQUIRED ON GROUP SELR NOT ASSOC^d WITH LINE FINDERS.
 7. WHEN USED WITH GBW 15930 OR EQUIV. STRAP P, + & - TAGS ON LEVS. 1 & 0 USING OR & B 25 SWG WIRING RESPECTIVELY. CONNECT M (LEV. 1) TO M1 & M (LEV. 0) TO M.
 8. 1st STEP CONTACTS Q10 & W10 WIRING SIMILAR TO CONTACT 9.
 9.

10. TYPICAL ALLOCATION OF AUX BANK CONTACTS.

| | | |
|----------|---------------------------|---------|
| 'NOTE 6' | ON APPROPRIATE LEV | |
| | STRAP A11 TO STRAP A12 10 | |
| | UNIT FEE AND CCB BARRING | U21 U24 |
| | SPARE LEVEL | U23 U22 |

BATT. W:- U12-CDe-He-R3Ab
 R3Bb-Ae-VMe-
 RMe-R1b.

ETH. R:- U11-H1-Ab-B21
 B25-B1-B3-B5
 N24-MR2a-R2a-R4a-
 TJ7

| | | | |
|---|----|---|----|
| N | NR | S | TJ |
| 4 | 1 | 3 | 14 |

ETH ETH R22 SWG U11 (UNIT 'B' OR 'E') (4A)
 ETH FROM R22 SWG U11 ASSOC^d L/FDR (UNIT 'A') (6A)
 BATT FUSE BK 22 SWG U12 (UNIT 'B' OR 'E') (4B)
 BATT FROM BK 22 SWG U12 ASSOC^d L/FDR (UNIT 'A') (6B)

| | | | | | | | |
|-----------------------|--|--|--|---------|--------|------------------|------------------|
| AMENDMENT PARTICULARS | | | | ISSUE | DATE | APP ^d | 50' N |
| DRAWN DBC | | | | CHECKED | WIRING | CIRCUIT | GBW 15960 MOD. A |

U.A.X. N.Z. No 13
 GROUP SELECTOR.
 (2000 TYPE)