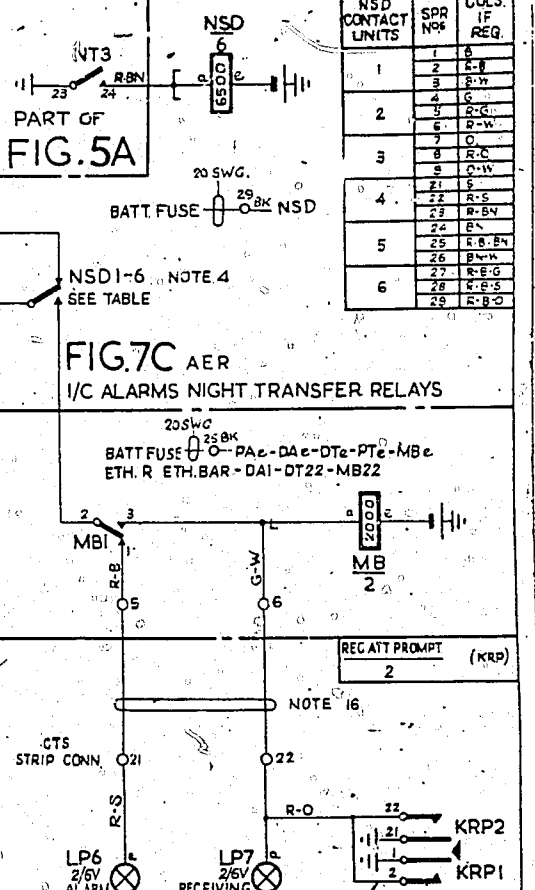
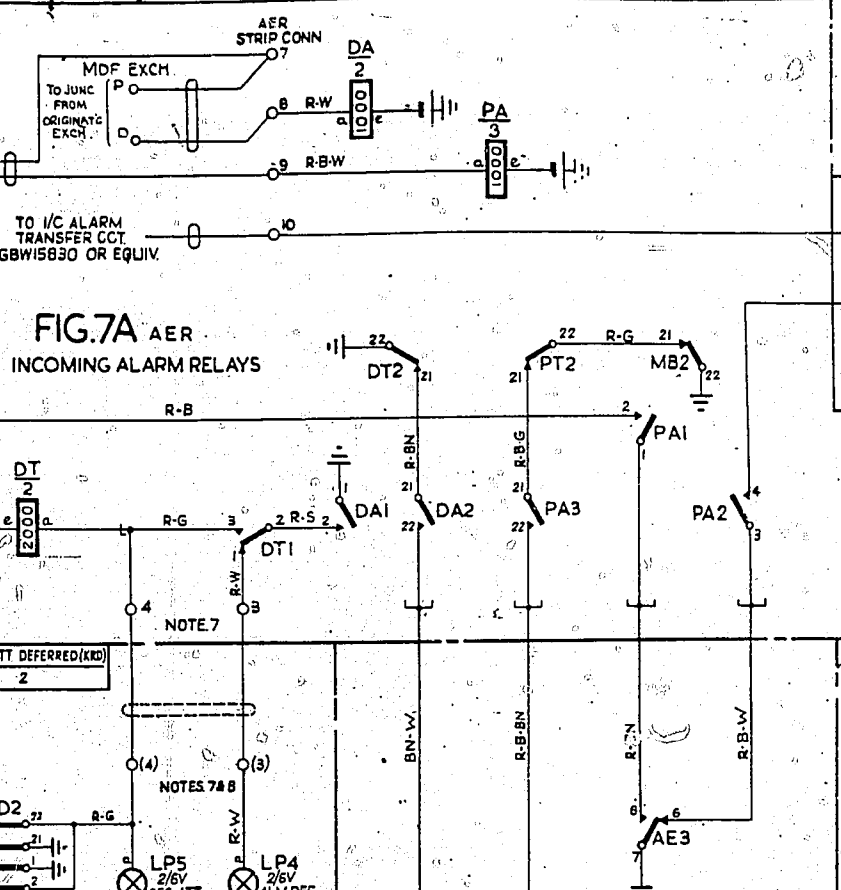
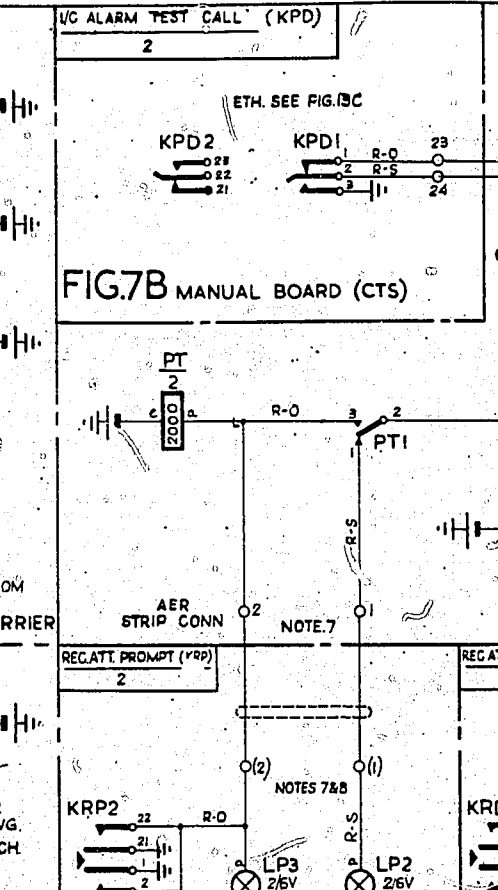
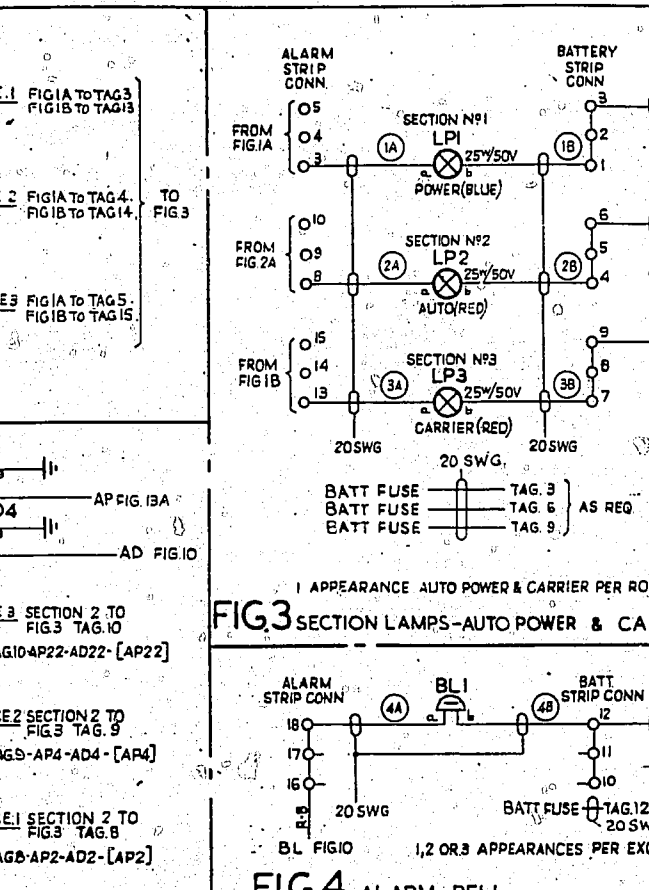
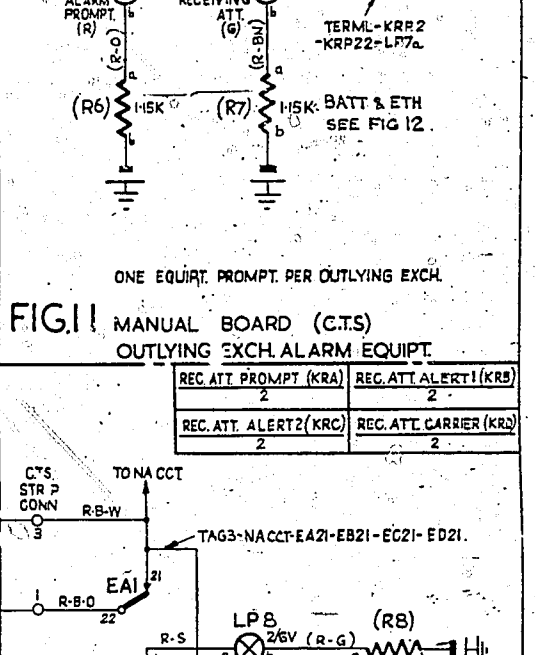
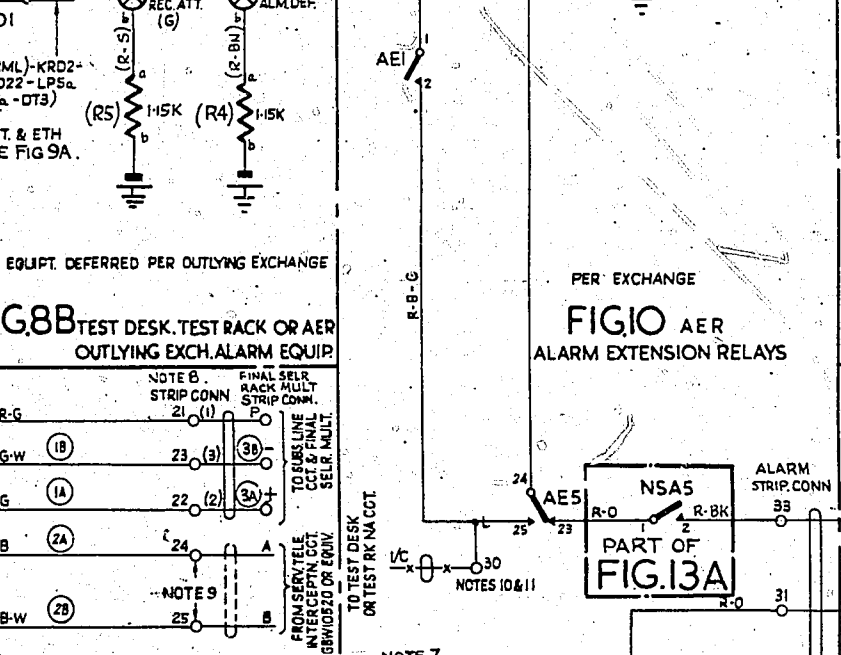
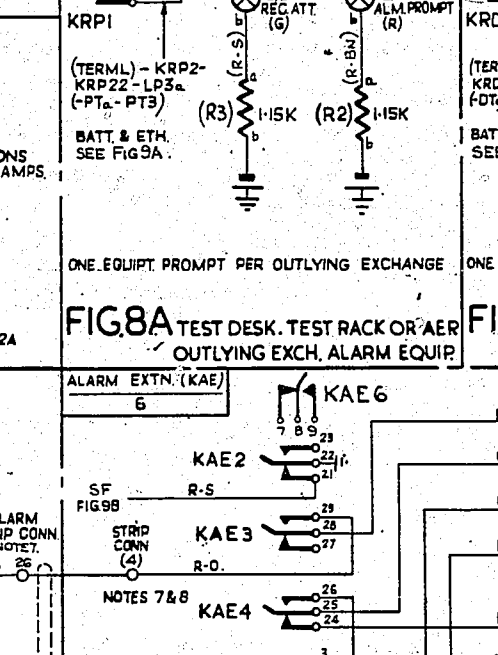
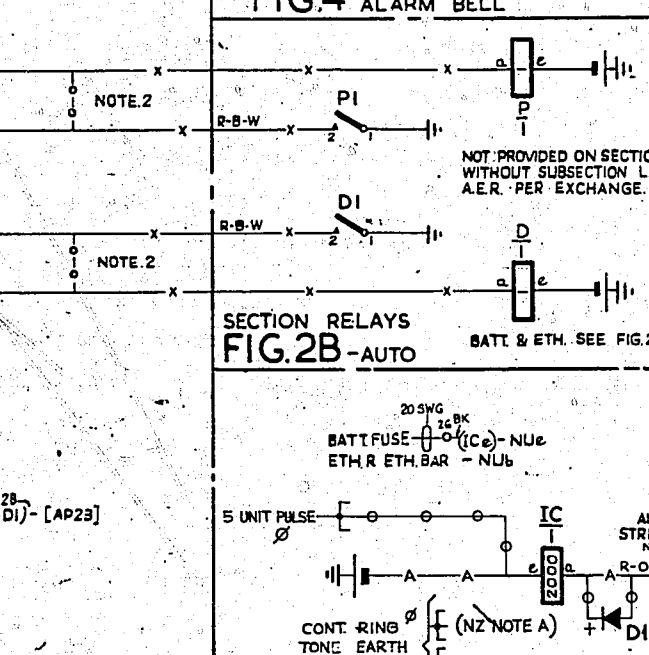
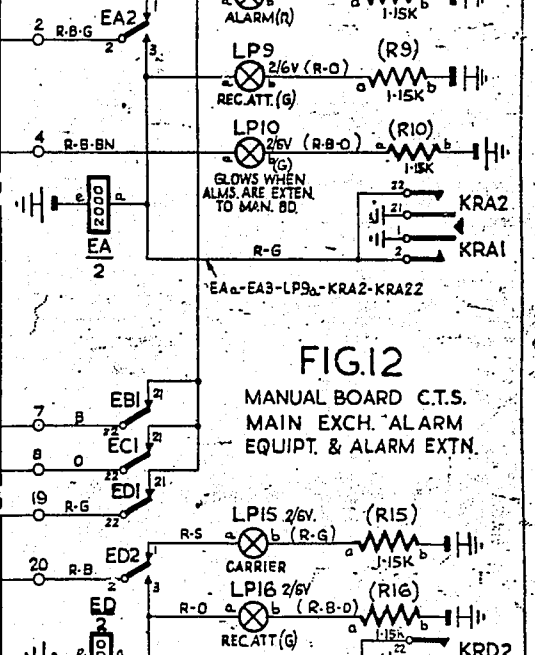
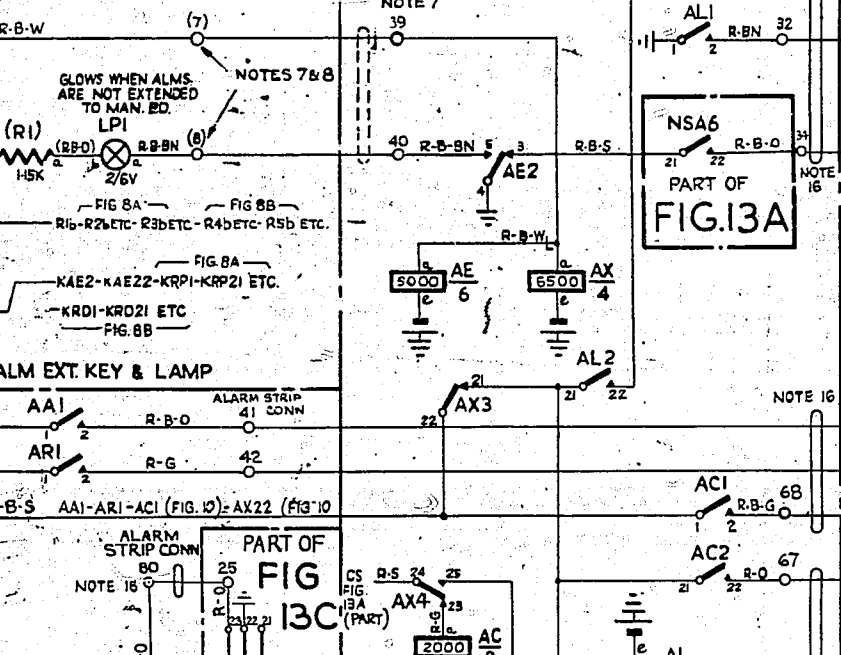
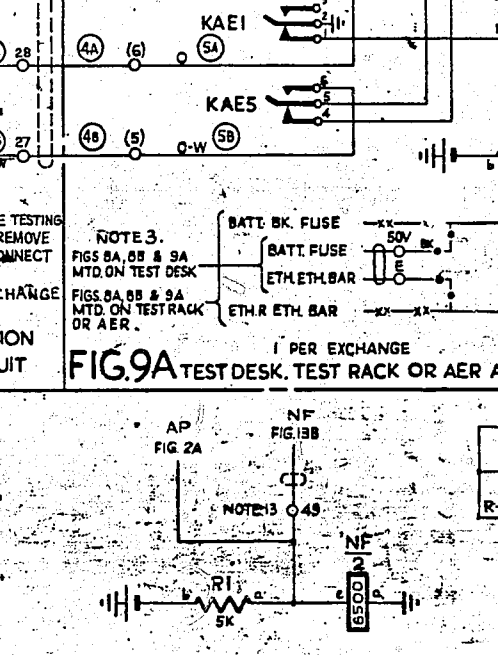
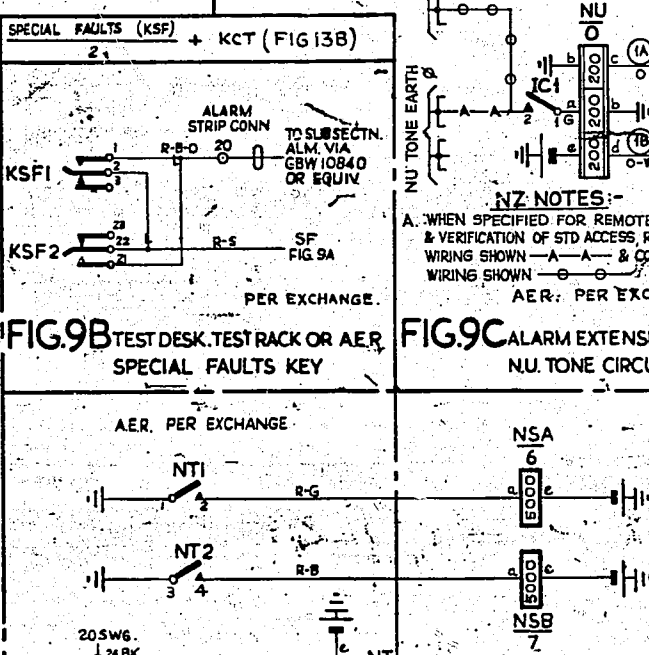
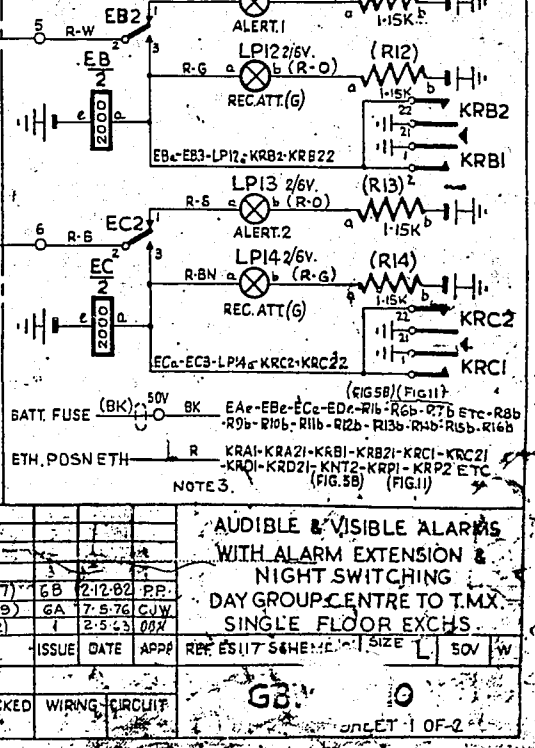
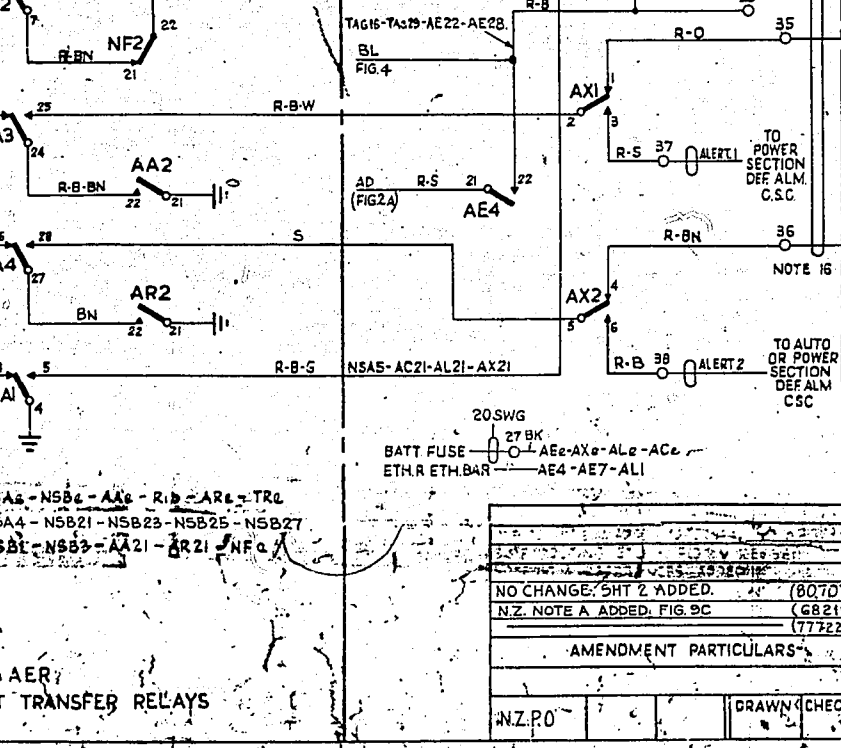
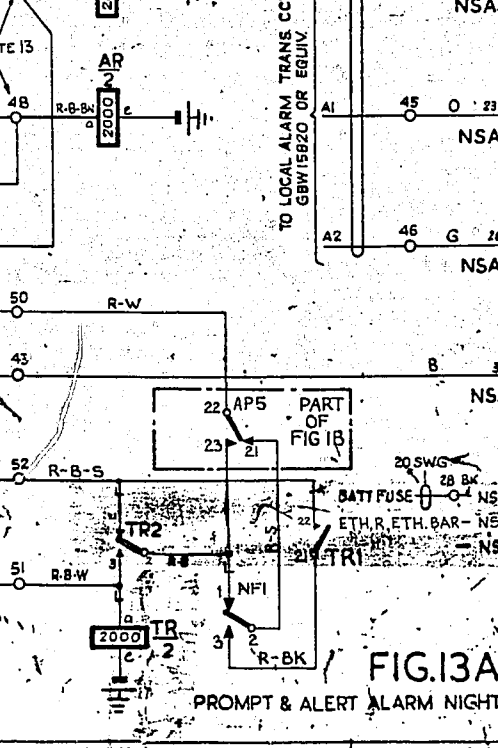
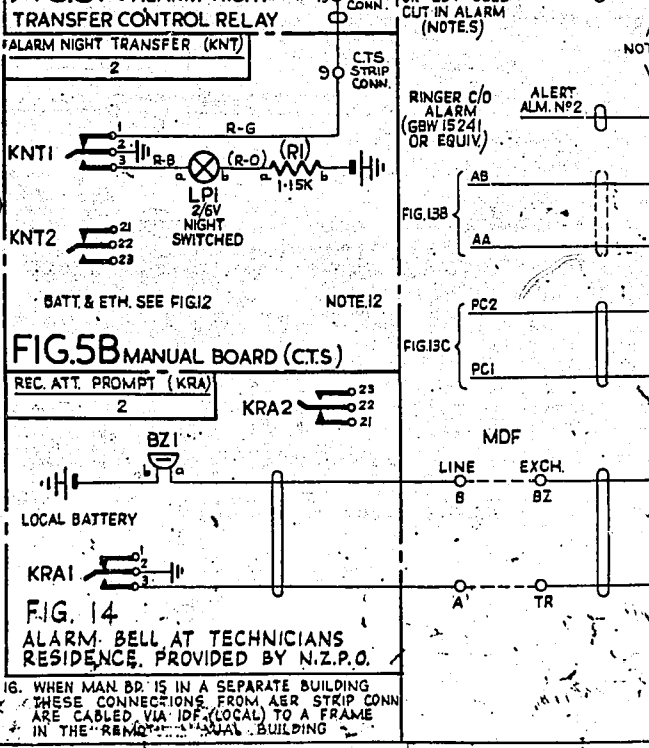
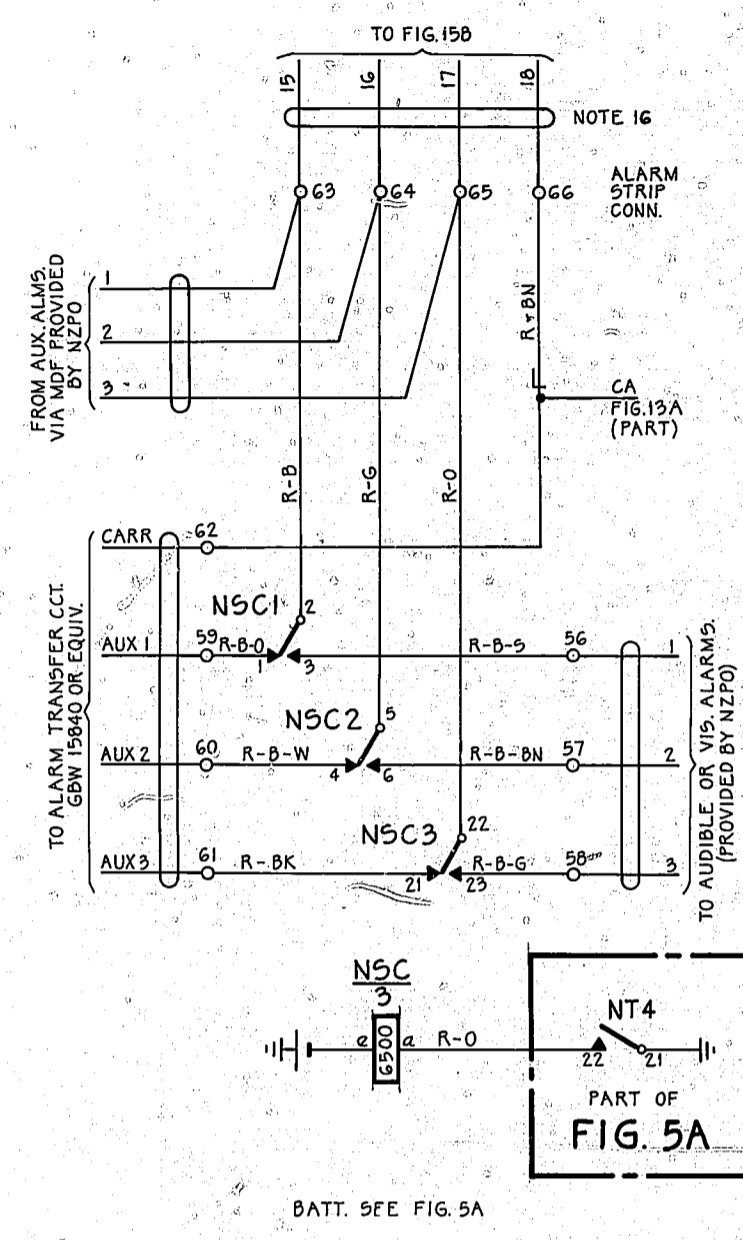


1. FUSING: ALL FUSES ON ALARM EQUIP FUSE PANEL ON RER UNLESS OTHERWISE STATED. FIG. 1A AP 1-5A AD 1-5A FIG. 1B AP 1-5A AD 1-5A FIG. 2A & 2B AP 1-5A AD 1-5A FIG. 3 3-0A PER SECTION PER 3 APPEARANCES FIG. 4 1-5A FIG. 5A FUSED WITH FIG. 1A 1-5A FIG. 5B FUSED WITH FIG. 11 & 12 1-5A (FUSED ON PFR. OR MAN. BD.) FIG. 6C 1-5A (FUSED ON NEAREST FUSE PANEL) FIG. 7A 1-5A PER OUTLYING EXCH. FIG. 7C 1-5A PER NSD RELAY FIG. 8A FUSED WITH FIG. 8B AND 9A 1-5A (FUSED ON TEST DESK, TEST RACK OR AER) FIG. 9C 10 AND 13A 1-5A PER FIG.
2. WHEN FIGS 2B & 6B ARE PROVIDED ADD CONNECTIONS SHOWN THUS - X - OTHERWISE ADD CONNECTIONS SHOWN THUS - O -
3. ALL WIRING TO BE 22 SWG UNLESS OTHERWISE SPECIFIED PLATE WIRING TO BE 25 SWG. IN FIGS 9A, 12, 13B, 13C AND 15B BATTERY & EARTH LEADS FROM THE FIRST WIRING POINT TO BE 55 SWG TO THE END OF THE RUN. ONE NSD RELAY PROVIDED PER 6 OUTLYING EXCHANGES.
4. WHEN ENGINE ALTERNATOR IS AUTOMATICALLY STARTED, ENGINE ALTERNATOR RUNNING ALARM IS PROVIDED, OTHERWISE 25V CELL CUT IN ALARM IS PROVIDED.
5. WIRING SHOWN IN BRACKETS THUS [ ] IS PROVIDED FOR RELAY AP ON DIAGRAM GBW 15370 OR EQUIV.
6. THESE TERMINALS ARE NOT REQUIRED WHEN FIGS 8A, 8B, 9A, ARE EQUIPPED ON AER.
7. TERMINAL NOS IN BRACKETS APPLY WHEN FIGS 8A, 8B, 9A, 12, 13B ARE EQUIPPED ON TEST DESK OR TEST RACK.
8. THESE TERMINALS ONLY REQUIRED WHEN FIG. 8A IS EQUIPPED ON AER.
9. WHEN FIGS 8A & 8B ARE ON AER STRAP TERMINALS 29 & 30 IN FIG. 10 TO GIVE ALGIBLE INDICATION ON I/C ALARMS.
10. THIS LEAD IS NOT REQUIRED WHEN FIGS 8A & 8B ARE ON AER.
11. KNT IS MECHANICALLY COUPLED WITH KNS ON GBW 15350 OR EQUIV.
12. WHEN FIG. 11B IS EQUIPPED ON AER STRAP TERMS. 53 TO 49, 54 TO 47 & 55 TO 46. FOR WIRING SEE GBW 11060 OR EQUIV.
13. SPRING NOS IN BRACKETS APPLY TO FIG. 1B.

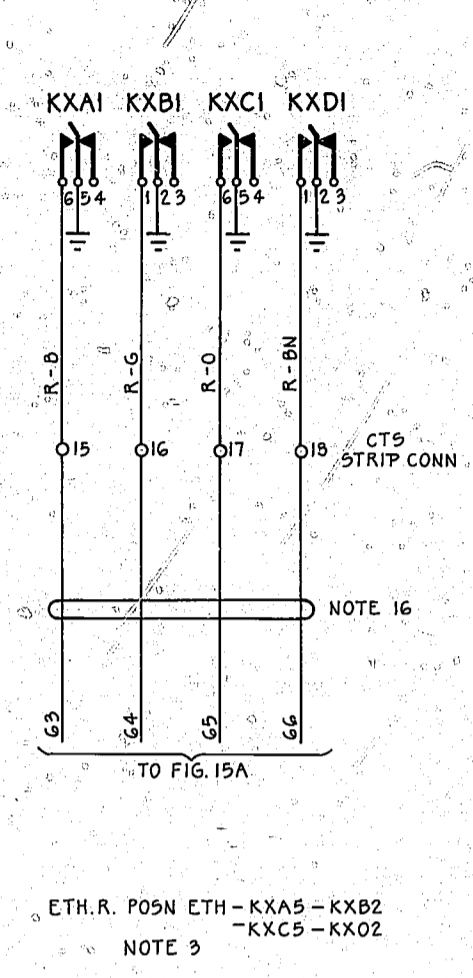


AUDIBLE & VISIBLE ALARMS WITH ALARM EXTENSION & NIGHT SWITCHING DAY GROUP CENTRE TO T.M.X. SINGLE FLOOR EXCHS.	
NO CHANGE, SHIT 2 ADDED.	(80707) 6B 21-22 6B
N.Z. NOTE A ADDED, FIG. 9C	(68215) GA 17-576 C.U.V.
	(77222) 1 2-5 23 002
AMENDMENT PARTICULARS	ISSUE DATE APPR
	REP. ES 17 54 HE 11 11 11 11

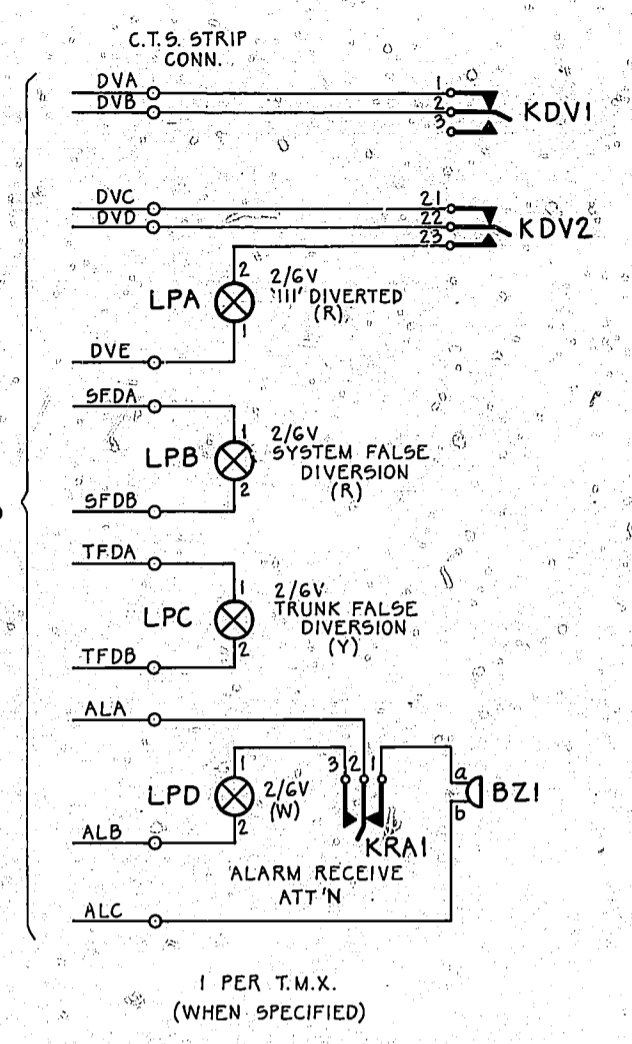
**FIG. 15A**  
A.E.R.  
AUX & CARRIER ALARMS  
NIGHT TRANSFER RELAY



**FIG. 15B**  
MANUAL BD (C.T.S.)  
AUX. & CARRIER ALARMS  
TEST CALL KEYS



**FIG. 15C**  
C.T.S.  
''' DIVERSION ANNOUNCEMENT  
MACHINE ALARMS



''' DIVERSION KDV 2	RECEIVE ATTENTION KRA 2
	KRA2 2
	BZ1 21 22 23

DRN: 95.W	CKD:	ORIGIN: 95.W
TCD: N.S.	APPD:	STANDARD
NZPO ENGINEER-IN-CHIEF, WELLINGTON		
SHEET: 2 OF 2		GBW 15810
ZE A1		

**AUDIBLE & VISIBLE ALARMS WITH  
ALARM EXTENSION & NIGHT  
SWITCHING DAY GROUP CENTRE  
TO T.M.X. SINGLE FLOOR EXCHS.**

UD 237

