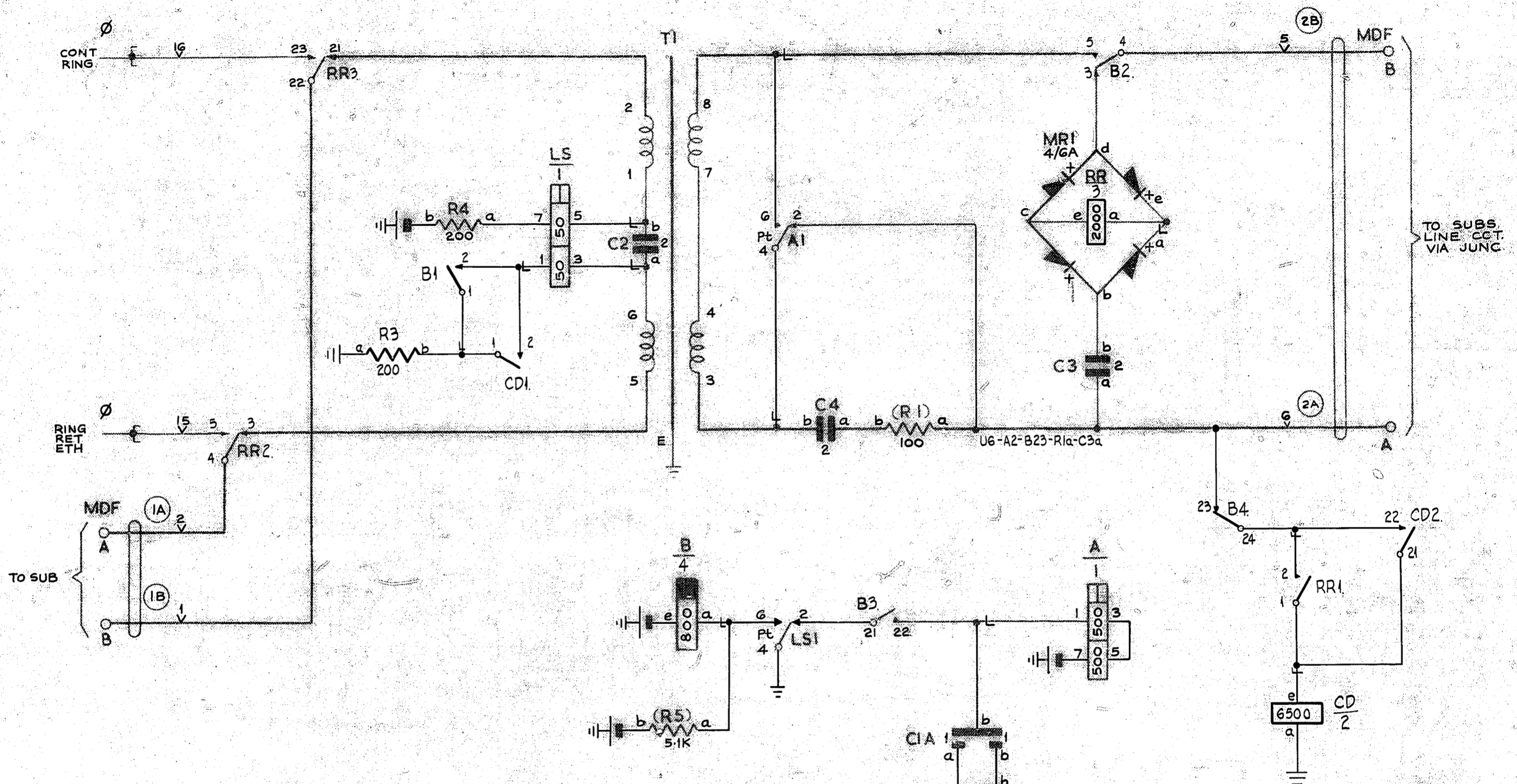


0
5 Centimetres
10
15
20
25
30



- NOTES:-**
1. FUSING 1.5A. PER CIRCUIT
 2. ALL WIRING TO BE 25 SWG UNLESS OTHERWISE STATED
 3. Ø FOR WIRING SEE RACK COMMON SERVICE DIAGRAM.
 4. THIS MODIFIED VERSION OF GBW 15620 APPLIES WHEN A REPEATER IS TO BE INSERTED IN THE PABX. EXCHANGE LINE-PUBLIC EXCHANGE CONNECTION OF A N.Z.P.O.-TYPE PABX.

BATT. W. U12-B^{R5b}e-A7-R4b
 ETH. R. U11-T1/E-L64-CDa-R2a-R3a
 BATT. BK 22 SWG FUSE (3B) U12
 ETH. R. 22 SWG ETH BAR (3A) U11

NZ.P.O. PABX. LONG EXCH. LINE REPEATER (FOR FOREIGN EXCHANGE SERVICE)			
(54659) A		2-11-62 06X	
AMENDMENT PARTICULARS		DATE	APP
N.Z.P.O. (CE 93/3/82)		DRYER	CHECK WIRING CIRCUIT
		SIZE: S	50V W
GBW 15620 MOD.A			